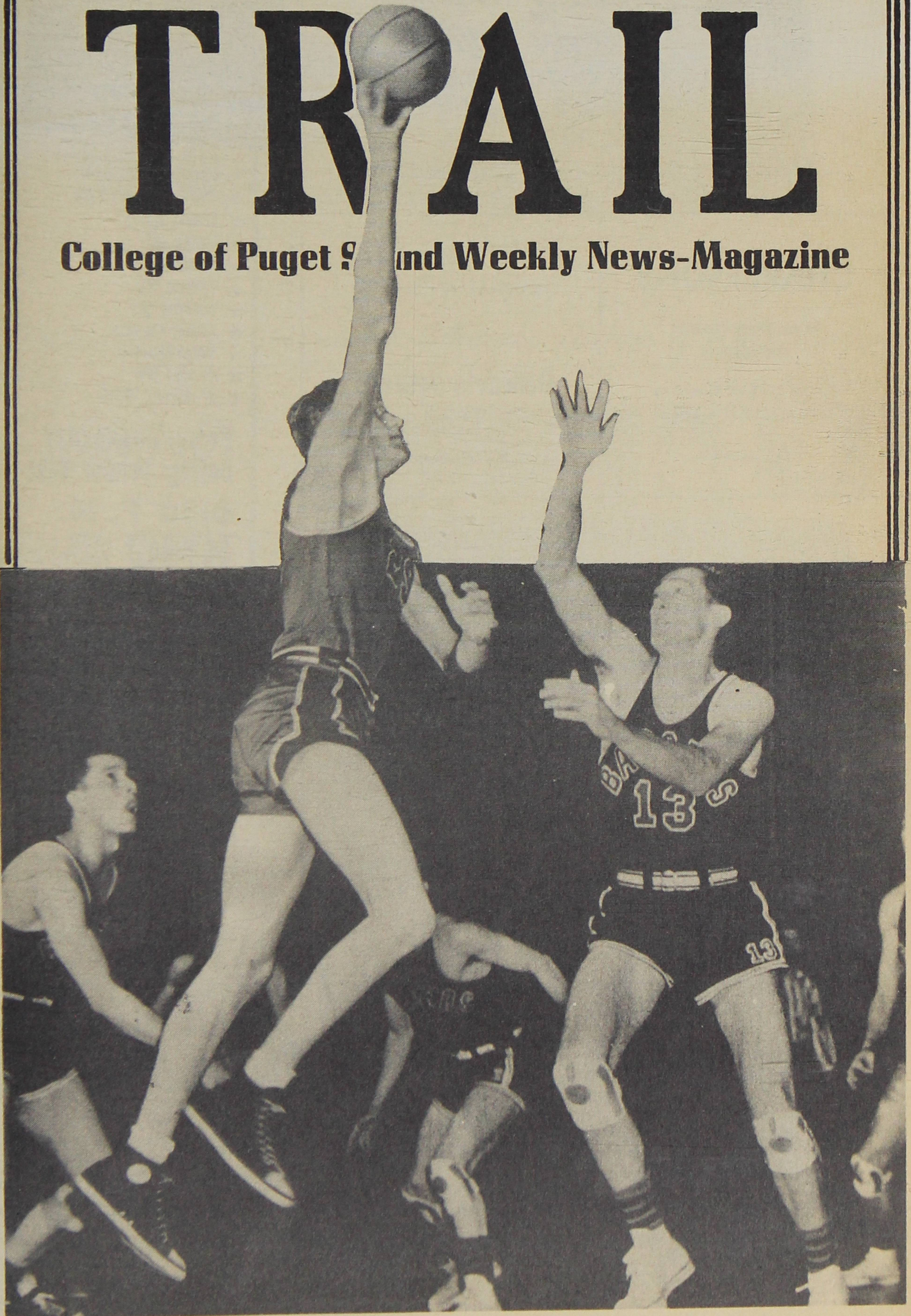


TRAIL

College of Puget Sound and Weekly News-Magazine



1/12/50



She Loves...

BROWN & HALEY
CHOCOLATES and
ALMOND ROCA

"Americas Finest Confection"

CHARLESONS

FOUNTAIN LUNCH
GROCERIES

9 A.M. - 11 P.M. Weekdays
10 A.M. - 8 P.M. Sundays

915 Lawrence

TIMELY CLOTHES
MANHATTAN SHIRTS



**Baker's Men's
Shop**

756 Broadway

**PUGET SOUND NATIONAL BANK
OF TACOMA**

SERVING TACOMA SINCE 1890

Member FEDERAL DEPOSIT INSURANCE CORPORATION

Famous Name

SWEATERS

FOR MEN AND WOMEN

WASHINGTON HARDWARE CO.

SPORT SHOP

TUNE IN...
Your Own
CAMPUS
RADIO THEATRE

- ★ COLLEGE OF PUGET SOUND
- ★ PACIFIC LUTHERAN COLLEGE
- ★ STADIUM HIGH
- ★ LINCOLN HIGH
- ★ SUMNER HIGH
- ★ PUYALLUP HIGH
- ★ VISITATION VILLA
- ★ FEDERAL WAY HIGH
- ★ CLOVER PARK HIGH
- ★ ST. LEO'S HIGH
- ★ ST. MARTIN'S COLLEGE

Every Wednesday
During School Year

6:30 P. M.

KMO 1360 on
Your Dial

Rebroadcast KTBI
9:30 A. M. Saturday

Sponsored by

Your **TACOMA CITY LIGHT**

**Good Luck
Loggers...**

Bert LaPore's
COLLEGE FOOD
STORE

3118 N. 21st St.

DANCE AT GEO. VICTOR'S

MERRY MAX

BALLROOM

JIMMY REPP AND HIS ORCHESTRA

Every Wednesday and Saturday Night
Hall Available For Private Parties

6th and Anderson

Phone PRoctor 2516



THE TRAIL

Published by the Associated Students, College of Puget Sound

College of Puget Sound

JANUARY 12, 1956 1

Tacoma, Washington

CAMPUS WEEK

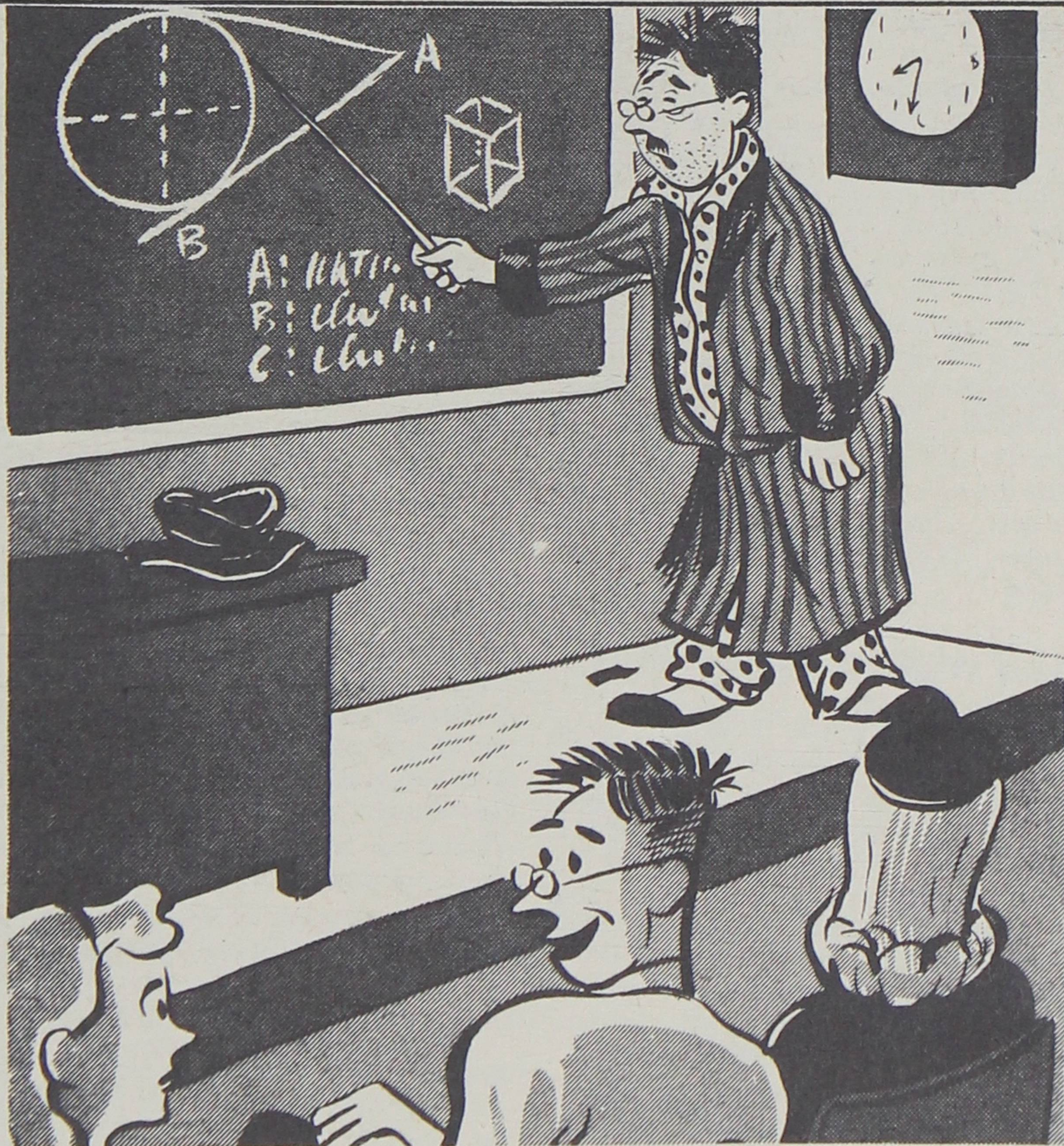
Closed week looms ahead and the Loggers were chopping away this week at last-minute reports, tests and term papers. The schoolrooms were cold and clammy Monday and a Luteville victory added to the dampness. The Greeks met, counted social cuts, discussed draft problems and grade points. Registration material came out of Dr. Powell's office as the week went by.

The place started to warm up by Tuesday. The Log in front of the SUB was changed and so did the attitudes of many. Only a pending exam schedule and a weekend of basketball was ahead. Rally Com was planning a rally for Friday, and inter-sorority volleyball was on in the girls' gym. PLC's girls' teams are due to play the WAA girls today. (See Sports, WAA.)

Horns blew and feet tapped in chapel when large Leroy Ostransky waved his baton over the Workshop band. Students sat dreamily tapping their feet. In back of Jones a tall fir was pulled away from its leaning side against the building. (See Gale.)

Central Board sat for almost a full hour listening to department and publication reports. The only voting accomplished was the vote to adjourn. Tamanawas picture deadlines were set and a few seniors trickled into the TRAIL office to make appointments for the senior pictures. (See box.) Students were relieved to hear a TRAIL would be out today.

The varsity show went into rehearsal without scripts and Film So-



"Nevertheless, you have to give him credit for never being late!"

ciety members sat through Thursday night's screening of Van Gogh. In the library the students sat, pouring over books and papers. Finals were one week off.

Inside the SUB, the jukebox was quiet at times. Students were mulling over class schedules and cups of hot coffee. Bookstore helpers began filling the shelves with textbooks for the coming term. A few people were buying supplies early. Shirley

and Martin Fopp were back at Deep Creek to teach spring-semester skiing classes. Students were anxious to take classes from new professors and the stable faculty dreaded the end-of-the semester grading.

In front of the SUB and across the streets there were no cars parked after Monday when police came and gave parking violations. Students refrained from parking there to save \$5, the fine amount.

STUDENTS

Coming . . .

Monday, Tuesday, Wednesday, Chest X-rays taken, Mobile Unit, Howarth Hall, 8:30-12:30 and 1:00-3:30 each day.

THERE WILL BE NO ISSUE OF THE TRAIL FOR THE NEXT TWO WEEKS, JANUARY 19 AND 26. THIS IS IN ACCORDANCE WITH THE COLLEGE RULING THAT NO PUBLICATION BE PRINTED DURING CLOSED WEEK AND THE WEEK OF FINALS. THE NEXT ISSUE WILL APPEAR ON FEB. 2.

Three-Point People . . .

Each semester the Dean thumb-tacks a list of names on the bulletin board outside his office. The list is titled "Seniors exempted from final examinations." These are the January graduates who have managed to hold their grade point average above the hallowed three-point line during their four collegiate years.

This semester the names are Doris Erickson, George Fowler, Calvin Gentle, Richard Grabenhorst, Nadine Kensler, Melvin Mobley, Gloria Nelson, Louis Raphael, William Richey, Nancy Riehl and Clarence Shuh.

Lines Were Short . . .

On Monday a few students went to the Registrar's windows to pick up their materials for pre-registration. Lines were short. After the windows were officially open, few stood in lines more than five minutes at the most. At first, the students picked

TAMANAWAS

Senior pictures to be taken January 16-18 at Harta's. Sign appointment sheets in TRAIL office.

All Greek proofs must be returned by January 20 to Harta.

up their materials which consisted of a class schedule book, a white card and a paper filled with information.

When the white card, called a "preliminary card" was filled, those attending school here next semester

EXAMINATION SCHEDULE

- Monday, Jan. 22—** 8:00—Classes that meet at 8 a.m. Monday, Wednesday, Friday.
10:00—All sections of English 1 and English 61.
1:00—Classes that meet at 1 p.m. Monday, Wednesday, Friday.
3:00—Classes that meet at 3 p.m. Tuesday, Thursday and all sections of Biology 1.
- Tuesday, Jan. 23—** 8:00—Classes that meet at 8 a.m. Tuesday, Thursday.
10:00—Classes that meet at 10 a.m. Tuesday, Thursday.
1:00—Classes that meet at 1 p.m. Tuesday, Thursday.
3:00—All sections of French 1, German 1, Spanish 1; that meet at 4 p.m. Tuesday, Thursday; and specially arranged examinations.
- Wednesday, Jan. 24—** 8:00—Classes that meet at 9 a.m. Monday, Wednesday, Friday.
10:00—Classes that meet at 11 a.m. Monday, Wednesday, Friday.
10:00—Classes that meet at 11 a.m. Monday, Wednesday, Friday.
1:00—All sections of Religion 1; and specially arranged examinations.
3:00—Classes that meet at 3 p.m. Monday, Wednesday, Friday.
- Thursday, Jan. 25—** 8:00—Classes that meet at 9 a.m. Tuesday, Thursday.
10:00—Classes that meet at 11 a.m. Tuesday, Thursday.
1:00—Classes that meet at 12 noon Tuesday, Thursday.
3:00—Classes that meet at 2 p.m. Tuesday, Thursday.
- Friday, Jan. 26—** 8:00—Classes that meet at 10 a.m. Monday, Wednesday, Friday.
10:00—Classes that meet at 12 noon Monday, Wednesday, Friday.
1:00—Classes that meet at 2 p.m. Monday, Wednesday, Friday.
3:00—All sections of Sociology 51, and specially arranged examinations.

The dates for final examinations will be Monday, January 22, to Friday, January 26, inclusive.

Examination will be two hours in length. They will be in the same rooms in which the classes regularly meet unless otherwise specifically announced.

Special times are set for examinations in Biology 1, English 1 and 61, French 1, German 1, and Spanish 1, and Sociology 51. Examinations in other subjects will be held at the times indicated below for classes of the period at which the course was given. Classes which meet Monday, Wednesday, Friday, and additional days will take examinations at the times indicated for classes of Monday, Wednesday, Friday. Classes which meet Tuesday, Thursday, and one or two additional days will take their examinations at the time indicated for classes of Tuesday, Thursday.

Any question or difficulties should be immediately referred to the Dean, and any special arrangements are to be cleared with him.

got back into another short line. The girls at the windows told them when to return.

Later in the week, when they came back again for another go at the lines, they received the usual "railroad ticket." After filling the long set of cards out, those that could struggle to the window handed the cards over with their cramped hands. The cards were again checked. Then they were reminded of one of the sentences of the first sheet given them. It said in part, "and pay fees if possible."

Speaking Tour . . .

Debaters are busy packing their suitcases this week. Six members of the debate squad left yesterday to participate in the Inland-Empire tournament at Moscow, Idaho. Moscow is the home of the U of Idaho.

The contestants are first- and second-year debaters. The university-style debate will go six rounds. Three teams are entered from CPS. They are John Durand, Larry Brown, John Smith, Eldon Cowling,



Erskine

OSTRANSKY LEADS THE WORKSHOP BAND IN CHAPEL "In Vermont" and "Tonsilectomy" . . .

Herb Richards, and Jim Gipple.

Schools represented are Washington State, Gonzaga, Whitworth, Idaho State at Lewiston, College of Idaho, Montana State, University of Montana, Whitman, Yakima JC and CPS.

Three more debaters will leave this weekend for Portland to attend the Northwest Intercollegiate Town Meeting tournament. They are Barry Garland, Dick Drues, and Jackie Hodgson. Larry Grotz will act as moderator. Dr. Battin will accompany the group.

A Dozen Debaters . . .

Eleven schools were represented at Seattle Pacific's tournament for junior division debaters January 5 and 6. One section of upper division debate was held for varsity teams, in which CPS took first place.

PLC took first, second, and third in lower division debates; and St. Martin's took a first in Lincoln-Douglas debate. Dick Drues from CPS took fourth place. First place in oratory was won by the University of Washington, and WWCE carried off first place in interpretative reading, with Barry Garland of CPS coming in second.

Debaters from CPS who made the trip were Barry Garland, Larry Gross, Jackie Rice, Arlene Ohlsback, John Durand, Larry Brown, Eldon Cowling, John Smith, Dick Drues, Tom Stanfield, Ken Radich, and Lea Blackburn.

Banner Gone . . .

The Logger banner has either been lost, stolen or has strayed. It was last seen at the first game in the Oregon series during Christmas vacation. Anyone knowing its whereabouts is asked to contact the Rally Committee or Money Dessen.

Hanging Art . . .

Hanging in the main art laboratory of Jones Hall are examples of the art work of high school students who entered the Delta Phi Delta competition. The art honorary offered tuition scholarships at CPS to winners in any media of art including painting, ceramics, and sculpture.

The work includes many things from Lincoln and Stadium and may be seen in the lab until January 19. All prizes have been awarded.

Free Pictures . . .

Hold it! "Yes, the tuberculosis X-ray mobile unit will be around this year, January 15, 16, and 17 in front of Howarth Hall," said bobbed-haired Alice Bond. "It takes only three seconds to have this free X-ray taken. This method is the only sure way of detecting tuberculosis."

Miss Bond pulled out a pamphlet from her files. Many thousands of undiscovered cases exist among peo-

ple who seem to be in good health, she explained. A doctor can detect an infected lung by the telltale gray shadows on an X-ray picture immediately.

"Well," she said, "that's the whole story. The mobile trailer will be in front of Howarth from 8:30-12:30 and 1:00-3:30."

CHAPEL

Workshoppers Work . . .

Dean Register clasped his horn-rimmed glasses and a paper tightly in his hand. "We want everyone to take the TB X-ray examination. Remember, the life you save may be your own."

The student chairman was a tall, bobbed-haired girl, Roberta Westmoreland. Her red shoes tapped across the stage as she appeared from the sidelines.

"The workshop band is one of the unique classes on the campus. Mr. Ostransky and his group will present for you today some of the popular arrangements they practice every Friday afternoon." This band was organized to "sound out" the latest creations of the arranging class.

The curtains swished back revealing 14 musicians behind blue band stands. Lee Whiteman poked his head over the piano from the keyboard position. Mr. Ostransky led the workshop band in a variety of

melodic tunes, "Guests in the Nest," "A Portrait of Jenny," and "Painted Rhythm." Photographer Dick Erskine climbed silently up the stairs to the balcony for a better shot of the maestro in action. With a smile, Ostransky introduced the following number by explaining that it was written to commemorate the marriage of Virgil Howarth, a band member. The saxophone player's brown, curly hair fell across his forehead as he rose to put his expression in "Virgil Meets Venus."

With a promise for a change of pace, Ostransky's boys produced "Tonsilectomy." The workshop band reached a high point in originality with "Strange Mood." Lee White-man took the nod to lead off followed by the trumpets and climaxing in a high-stepping rhythm. Ostransky wiped his forehead with a handkerchief. He concluded the program with two shooting arrangements, "In Vermont" and for an encore "Romance and Sea."

ORGANIZATIONS

Journey for Jo . . .

National Spur Vice-President Jo Copple journeyed to Whitman during vacation to be the installing officer for the new Whitman Spur chapter. Installed were 37 former members of the Arrows, women's service group.

Also at the installation were members of Washington State's chapter of Spurs.

Soda Ash and Wax . . .

Dick Carlson and Ed Barnes, each in turn, stood up and cleared their throats. Student members of the American Chemical Society were seated in front of them in H215 on Tuesday afternoon at 4 o'clock.

Dick told about silicones which are organic-metallic compounds of silicon. They are used for waxes, high temperature insulative coatings, and lubricants.

Ed described soda ash, its natural sources, its industrial production and industrial uses.

Movies and Lunch Sacks . . .

Geology Club held their usual noon meeting over the usual rustle of lunch sacks. Sandwiched between two movies came the club business.

CENTRAL BOARD MINUTES

January 9, 1951

The meeting was called to order by President Jim Ernst. The roll was called and the minutes read and approved.

DEPARTMENTAL REPORTS:

Men's Intramural—Jack Fabulich reported that basketball will not start until after finals.

Debate—Barry Garland gave a complete report of the semester's activities in the debate department. He outlined the tournaments that will be held here and the ones which would be attended by our teams for next semester.

Women's Intramural—Marian Swanson announced that three women's volleyball teams will come from PLC to play our teams this Friday.

PUBLICATIONS:

Tamanawas—Lois Wasmund gave a comprehensive report of work being done on the yearbook. Much of the work is completed and if the rest of the work goes according to schedule, the Tamanawas will be out on time.

SCC—Byron Brady gave a report on the semester work of SCC. He gave some of the plans that the Council will be working on the rest of the year. He also gave a summary of Student Christian Association Conference he attended during Christmas vacation at Oxford, Ohio.

Judiciary Committee—Delores Breum reported on progress of this committee. The appointed members are Gene Campbell, Jo Ann Neff, Ted Vaughn, Marian Swanson, Jean Hagemeyer, Tom Rutledge, Betty Rusk, Patti Lemley, and Nick Nickolas.

Mr. Banks told of the 230 copies of last year's Tamanawas that are still in his office. He asked for suggestions of how to get the people who are entitled to them to come and pick them up. Jim Ernst appointed Don Jaenicke, Lois Wasmund, Mr. Banks and himself to investigate the probability of using the Central Services to print the TRAIL next year.

Constitution Committee—This committee will meet Thursday at 12 in the SUB lounge.

Don Jaenicke asked about the plaque that was to be put in the Fieldhouse as part of the dedication. Marian Herstrom said that the list of names is still being compiled.

Respectfully submitted,
DELORES BREUM,
ASCPS Secretary.

The business consisted of nominating next semester's officers.

The movies were technicolor studies of Yellowstone National Park and the Grand Canyon.

Lettermen Nominate . . .

Logger Lettermen met in the SUB on Tuesday, January 9, and nominated officers for the spring semester. Voting will be held at the next meeting, January 16 at 10 a.m., again in the SUB, Secretary Tom Medak announced.

GREEKS

The Sigma Chis held elections recently. The results are Buster Brouillet, consul; Jack Fabulich, pro-consul; Al Slaughter, annotator; Dick Chiarivano, quaester; Stan Selden, assistant quaester; Bud

Sethe, tribune; Don Bates, associate editor; Ralph Mackey, historian; Len Spanish, magister; Billy Brouillet, kustos; George Fossen, IFC; Ray Price, social chairman, and Al Herzog, chaplain.

Jerry Pepos, Dick Lyman and Leroy Gruver are the latest Air Force recruits, and are stationed in San Antonio, Texas.

The latest trophy on the Sig piano is the badminton trophy. Ed Wilson, ex-president of the Tacoma Sig chapter, is now the temporary Delta Phi chapter adviser, replacing John Blair.

Buster Brouillet passed cigars last Monday announcing his pinning to Barbara Bell.

Mrs. Lela "Shifty" Shiffbauer had the Gammas in her new home for their first meeting after vacation, January 3. Gamma engagements were Joyce Durkee to Michael Barber and Kaye Klopfenstein to Pat

Jennings. At Monday night's meeting Janny Williams passed chocolates announcing her engagement to Earl Johnson.

New Gamma officers installed were Barbara Albertson, president; Doris Beardsley, social chairman; Donajoy Johnson, pledge mother; Gloria Kloepper, treasurer; Molly Coy, recording secretary; Marilyn Giesy, corresponding secretary; Joanne Ryan, historian and Peggy Campbell, sergeant-at-arms.

Bernadine Budil revised the sorority scrapbooks, combined them into one huge illustrated book and turned it over to Joanne Ryan.

Beta President Jane Simmons announced her engagement to Don Hill of the UW at the Christmas dance at the Lakeside Country Club, December 19.

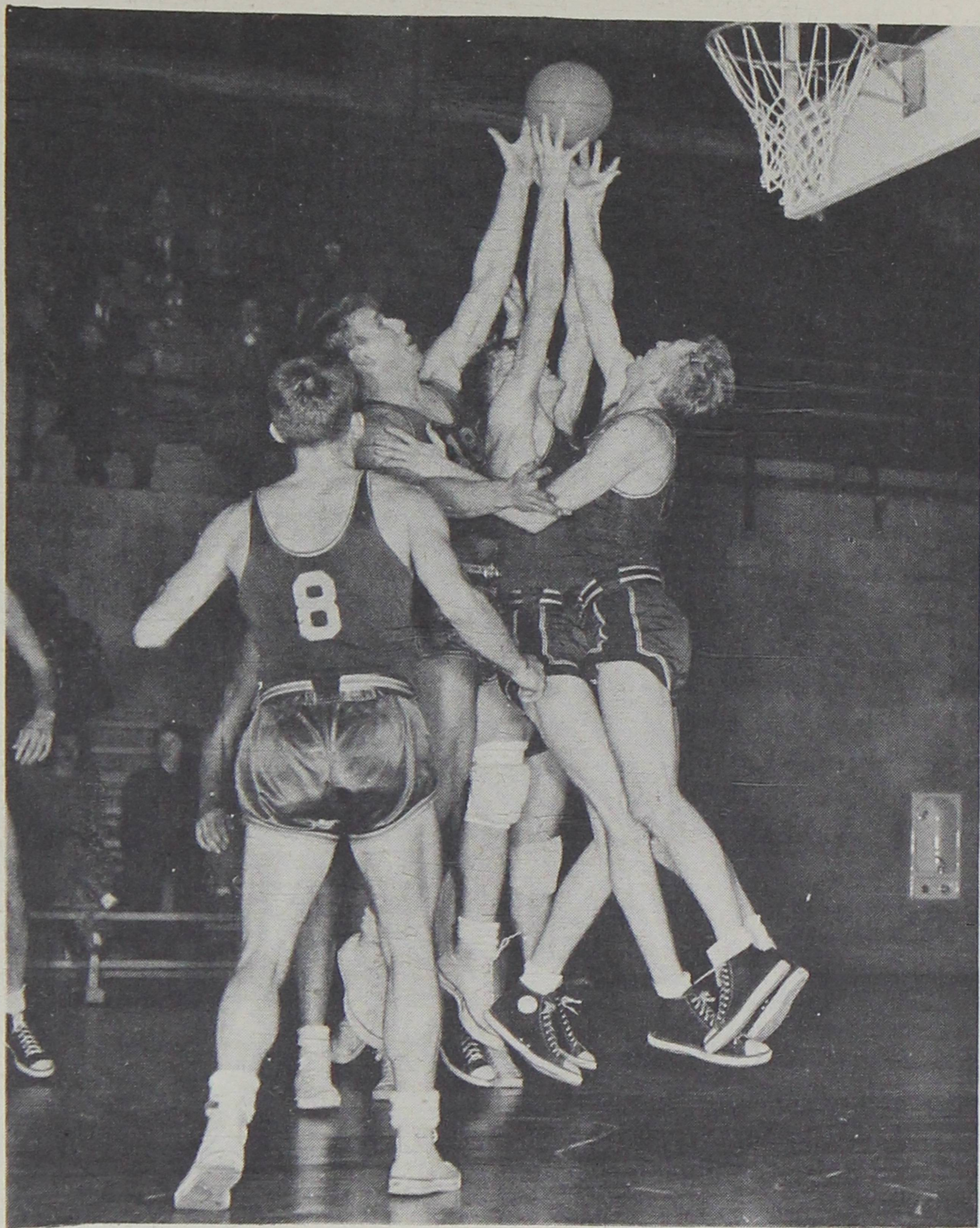
Elections Monday night listed Jane Simmons, president; John Oakes, vice-president; Jackie Thurber, secretary; Beverly Hansen, treasurer; Joanne Lowry, social chairman, and Janet Erickson, pledge trainer. After installation the pledges presented a skit.

Proceeds from the Sigma Nu Christmas party went to the underprivileged children of Tacoma. The "proceeds" were in the form of toys which were distributed by the members and pledges to each other and afterward were gathered up and donated to a church society which took over from there.

Sigma Nu football players from CPS and the University of Washington were honored Monday night at a banquet given by the alum chapter of Tacoma. Sigma Nu gridgers from the "U" who were in attendance were Fritz Apking, Ted Holzknacht, Bud Olsen, Bill Peterson, Howie Werstiuk, and Jim Wiley. From CPS were Bob Carlson, Ned Conley, Harvey deCarteret, Wally Erwin, Harry Johnson, Nello Michelotti, and Don Murdoch.

After a long meeting last Monday night, the Delta Kaps came up with a new group of officers for next semester. New DK president is Chuck Howe. Ed Halverson is first vice-president, (re-elected); Bruce Dennis is second vice-president, Chuck Jorgenson is treasurer (re-elected); Don Jaenicke is recording secretary, Nick Nickolas is corresponding secretary, (re-elected); Ed Hager is historian, and Les Rhea is sergeant-at-arms.

Newly-engaged Delta Kaps are Duane Wegner to Mary Kincheloe, Ken Daily to Joyce Osborne, Mike Barber to Joyce Durkee and Pat Jennings to Kaye Klopfenstein. Bill Tudor is pinned to Joyce Early, and Dick Finke to Donajoy Johnson.



Bob Rudsit, CPS News Bureau

LEAPING AND LEANING: UNDER THE BASKET ROD AND DAN*
Logger rebound work . . .

SPORTS

Coming . . .

Basketball tonight, CPS vs. Whitworth at Fieldhouse, 8 p.m.

Basketball tomorrow, CPS vs. Eastern at Fieldhouse, 8 p.m.

Volleyball, PLC girls vs. CPS girls, Women's gym, 3 p.m. today.

Moanin' Marv . . .

Moanin' Marv Harshman never fooled anyone—save himself. Before last week's Lute-Logger tilt, all he and his Parkland propaganda machine could do was complain about

the fact that his poor unfortunate cagers had to face mighty CPS on Saturday. "We don't even belong in the same league with Eastern, Whitworth and Puget Sound," groaned the sad Glad mentor.

Day after day, he went on lamenting while Tacoma people sat back and laughed. They had already watched the Lutes smear the Loggers, 64-39, earlier in the season and couldn't figure out how Harshman could dream up such pure folly.

Marvelous Marv had built himself a nice escape mechanism, however, and if by chance he'd been on the losing end, you'd have heard him holler, "I told you so," all the way to Seattle. As it was, he fooled himself into believing that he'd pulled the upset of the year.

In reality, the contest was the

*Oregon's Jim Luscutoff goes up in the air with Loggers Don Danielson and Rod Gibbs in a scramble for the ball. The Ducks took a pair of holiday games from CPS with two last-minute wins.

farthest thing from an upset. It turned out to be an almost exact replica of the first. This one ended 68-54 and again it was a case of Lute hustle and Logger sluggishness.

Part of the Logger do-nothingness can probably be attributed to the fact that they had played four of their most strenuous games of the season in the week prior to the crosstown engagement. After two grueling Oregon games, the Loggers were forced to run their legs off against Seattle University and Central. Any such excuse would appear weak, however, when you consider that the Lutes were victims of the same circumstances in the previous game.

Thus, Gene Lungaard and company have two straight wins over the Loggers to their credit. CPS won't have a chance for revenge until January 26. They're probably not too anxious to see the Glads anyhow.

The Loggers do have some pleasant memories of their holiday schedule. They were most impressive against Oregon, playing the Webfeet on even terms in two games only to lose them both in the final seconds. Then, Seattle University's vaunted Chieftains were within 15 seconds and a referee's whistle of defeat at the hands of the Loggers. Coach John Heinrick's hoopsters had to be content with an official "almost" effort but anyone who saw the game will agree that CPS had won.

The Loggers won their conference opener with a thrilling 65-61 win over Central at Ellensburg. Coupled with the PLC loss, it leaves the Loggers with an even-up league record. Tonight and tomorrow, CPS gets its biggest test of the year. A pair of league-leaders, Whitworth and Eastern, are in town for conference games. Right now, wins are a must. Conference hopes could go right out a Fieldhouse window on either night.

Nine Fans . . .

They're not members of the debate team and know little about the art of oratory, but nine Puget Sounders battled verbally with some 1500 Central Washington students last Thursday night and got the last word in.

The nine, Dick Albertson, Bob Clapper, Sandy deCarteret, Nello Michelotti, Harry Ingraham, Wally Tonstad, Bob Fey, Fred Schmidt and Roy Gasney traveled all the way to Ellensburg to back the Loggers in their Evergreen conference hoop

opener and went home happy with what they'd seen. The Loggers were 65-61 winners.

In their own private feud with the Central rooting section, the nonette did quite well. Their closing chant, "hey, hey, look at the score!" left the Wildcat fans speechless.

Captain Rod . . .

(SEE COVER)

The Loggers of CPS hooked up in a thrilling overtime basketball game with Central's Wildcats last Thursday night. It was the Evergreen conference opener for both teams and the regulation time ended with the score knotted 53-53. About midway in the extra period, a typical incident occurred.

A deafening roar filled the Ellensburg gymnasium and a gangling blond giant walked slowly off the maples, sat down on a wooden bench marked visitors, and wiped the sweat from his face. Hundreds of white handkerchiefs waved across the way and a chorus of Central students



sang, "Goodbye, Rodney, we hate to see you go!" The public address announcer blurted, "that foul was on Rod Gibbs, number 29, and he leaves the game with five personal fouls." The Central stands went wild.

It was no small wonder that the fans were delighted to see Gibbs leave. For the Logger captain had almost wrecked the Wildcats single-handed. Large Rodney poured 28 points through the hoop and dominated both backboards. In one brief period near the end of the contest, he grabbed 10 straight rebounds. In addition, he turned in such a sparkling defensive performance that his opposing center only got one shot away and it fell harmlessly short of the hoop.

Gibbs' accomplishments were made all the more remarkable because he was a marked man. Coach Leo Nicholson had the Wildcat bulletin board plastered with pictures and clippings about the Logger center and had worked on defense against his pivot shots all week long. Three men fouled out of the game attempting to check him and another had four fouls called against

him. He was fouled 18 times by the frantic Wildcats.

Gibbs' show at Ellensburg last week was perhaps his best since donning the Maroon and White togs two years ago. But, Logger fans are willing to argue that point. He's turned in many nights of outstanding basketball.

His followers still remember . . . a 23-point splurge against PLC two years back which enabled the Loggers to walk off with the state NAIB title . . . a telling 19-point contribution against the same Lutes last year . . . his marvelous checking jobs against high Harry McLaughlin (the Glad center never did score over 9 points in a game against Gibbs) . . . his 16 tallies in last year's Washington game during which he hit 12 consecutive free throws . . . and his work in the Pacific University game of this season when he grabbed 30 rebounds off the backboards.

Everything considered, Gibbs is probably the Northwest's outstanding center. He was an All-Evergreen selection last season and led the circuit's scorers for the year's play. In league action, he ranked second in the scoring column.

Gibbs has been to a tournament in every one of his three college years. While only a freshman, he and his Washington mates played in the National Invitational tourney and the Loggers have been at the NAIB in Kansas City the past two years.

Rod has played against the best in the country. The great George Mikan, Red Rocha, Vince Hanson and Jack Nichols have all stood across the center circle from the rangy Logger. "Mikan is the best of all," says Gibbs, "the others don't even compare."

A few compliments have also come his way. "Gibbs is the toughest center I've ever had to play against," said Harry McLaughlin in an interview last year, "and I've been up against some mighty good ones."

Logger fans are inclined to agree with Harry. They wouldn't trade Gibbs for anyone. He's one of the most colorful figures to ever grace the CPS maples. To them, "the Gibbner" is Mister Basketball himself.

Fifteenth Round . . .

Coach John Heinrick pulled the sweat shirt up from his waist and held the knit band of the shirt in his teeth. "Now," he said, as he carefully folded the sweat shirt into

its proper position, "have you got that?" To the affirmative answer, he said, "good. Now you can tell them that we are going to continue boxing. The room's still there. We're going to continue boxing but the opportunity to engage in interscholastic competition is knocked off. Oh. Tell them that I really appreciate the many hours and tremendous amount of work that Coach Homer Amundsen put in on the team and the matches."

The boxing team has been returned to an intramural standard for several reasons. Heinrick said that the college's athletic board had made this decision because: 1) The state boxing commission would require an expensive license to be taken out by the school. The license is required because the college could not find enough talent to have a complete college team. This made it necessary to bring amateur fighters from outside the school to complete the cards. 2) One of the team's top boxers, Virgil Larson, has gone and three more of the top men are going into the service. 3) But probably the major reason for the change in policy was the fact that the team had found it almost impossible to find a college team to fight. About the only possible school, Eastern Washington, discontinued boxing last spring.

INTER-SORORITY VOLLEYBALL STANDINGS

January 10, 1951

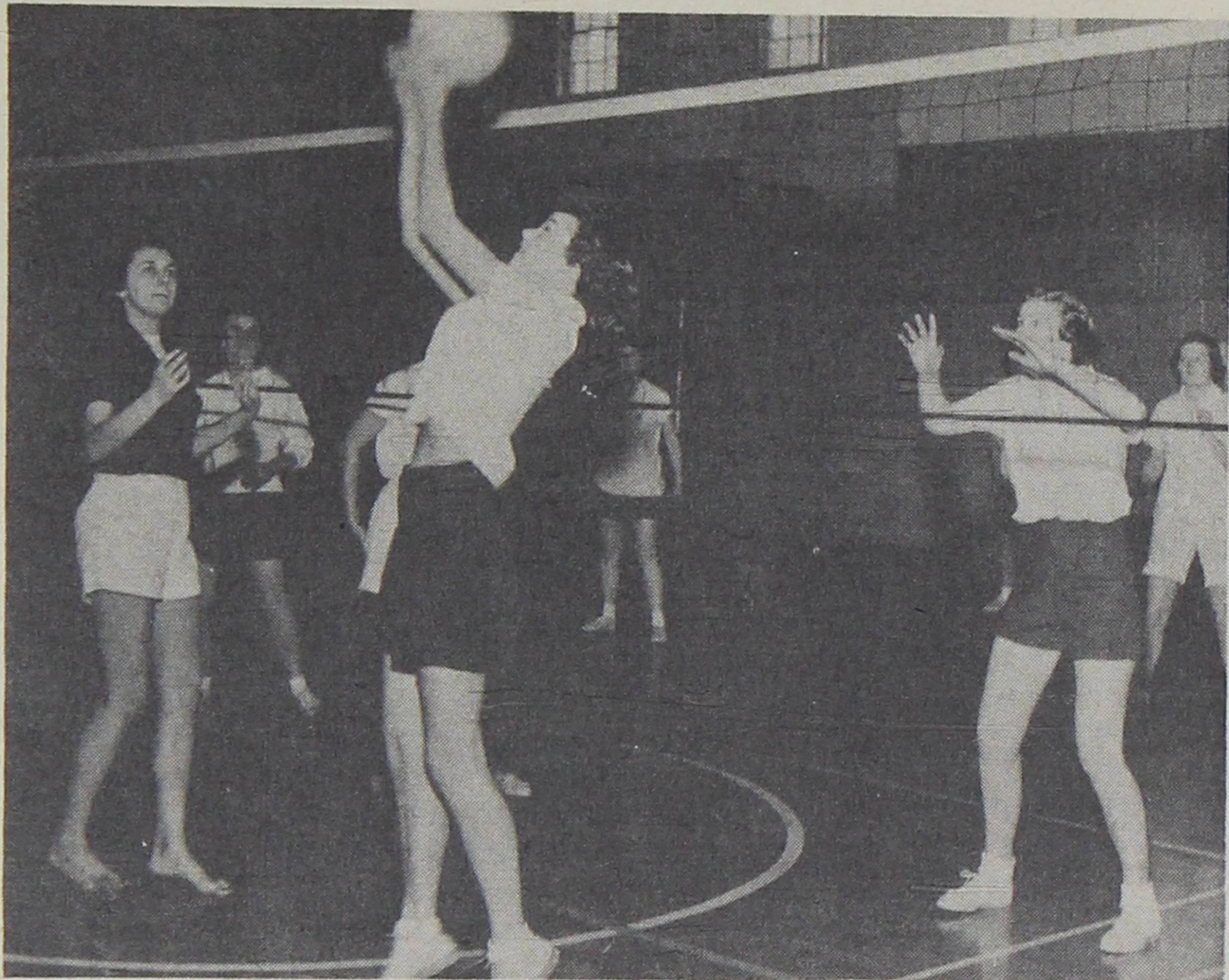
Sorority	W	L	T
Gammas	3	0	0
Indees	2	0	1
Lambdas	2	1	0
Pi Phis	0	2	1
Betas	0	3	1

PEOPLE

Early in the Christmas vacation **Bonnie Trefren**, president of Anderson Hall, married graduate student **Wilbur Norman** in Spokane. They will go east together on the Adelpian tour.

Driving back from Bonnie's wedding four other CPS students, **De-lore Breum**, **Claudia Zediker**, **Carol Swenson**, and **Tom Cherrington**, turned over on the icy Spokane highway. The four were unhurt and are back in school, but Tom's car will remain in Spokane for an undetermined length of time.

Sandstorms in eastern Washington made **Elizabeth Bradham** late get-



Anderson

UP AND OVER: INTER-SORORITY VOLLEYBALL IN THE GIRLS' GYM*
Today, a team from PLC . . .

BASKETBALL SCHEDULE

January 12—Whitworth at CPS
January 13—Eastern at CPS
January 19—Western at CPS
January 20—UBC at CPS
January 26—PLC at CPS
February 2—CPS at UBC
February 3—CPS at Western
February 6—Seattle U at CPS

February 9—CPS at Eastern
February 10—CPS at Whitworth
February 12—CPS at Gonzaga
February 16—St. Martin's at CPS
February 17—CPS at St. Martin's
February 23—PLC at CPS
February 24—Central at CPS

ting back from Montana, and snowstorms kept **Dixie Wolfe** and **Bev Warner** in Denver, making their trip from Oklahoma City a day longer than expected.

Back with suntans from Aspen, Colorado, were skiers **Doug Corns**, **Clint Gossard**, **Dave Gossard**, **Gail Hilstad**, **Chuck Jorgenson** and **Chuck Howe**. Wounded in Korea was former CPS student Marine Sergeant **Ralph (Carl) Eickenberry**. Recovering from a knee operation she underwent during vacation, PE Instructor **Alice Bond** hobbled on crutches when school took up and discarded them this week. In a cast after skiing at Chinook is **Joanne Foisy**.

Dean **Regester** attended the annual meeting of the Board of Education of the Pacific Northwest Methodist Church Conference in Seattle Wednesday.

*Left: Front line Pi Phis **Corrine Sule** and **Joanne Wood** tip the ball to Gammas **Sally McClean** and **Doris Beardsley** (right).

ENTERTAINMENT

Raver Recital . . .

The murmuring quieted to a hush, the audience focused their attention on CPS Senior **Leonard Raver**. He struck the first organ chords of the "Grand Choir Dialogue," by Gigout. It was Sunday afternoon, January 7, at the Mason Methodist Church and this was his senior recital. Highlights of his selection were "Pastorale," and the "Elfin Dance."

Raver was assisted by the CPS string quartet in Mozart's Sonatas 13 and 15. Members of the quartet are **John Howard Walters**, violin; **Donna Lerew**, violin; **Bob Main**, viola; and **Dave Whisner**, cello.

Leonard Raver plays for many

CPS functions, including the rendition of the "Alma Mater" twice each week during chapel.

Every music major at CPS gives a recital in his senior year. Two other CPS seniors, John Jones and La-Vonne Schuler, are scheduled to give recitals.

Program Today . . .

Appearing in complimentary recital this afternoon are Mr. Jacobsen and Mr. Epperson of the CPS music faculty.

The program is the one prepared for the Wedgwood Room recital of the Friends of Music, Wednesday, January 17, in the Winthrop Hotel. Contemporary classical music will be played in the piano and cello solo groups. The quintet will perform something of a more conventional tone.

Faculty and Administration

Faculty Dines . . .

Nearly 70% of the faculty eligible for membership in the American Association of University Professors showed up in their best bibs and tuckers to attend the officer installation dinner. The banquet was given in the SUB last Friday evening.

Dr. Jaeger acted as toastmaster. Edna Ellen Bell was in charge of table decorations. Leroy Ostransky

CPS STATISTICS	
Maximum enrollment this fall	1,603
Withdrawals by students who entered the Armed Forces	38
Withdrawals for other reasons	76
Draft-eligible men who are deferred until June 30 only	291
Men who are 1-A now	76

(These figures were given the TRAIL by the Registrar's office as of January 10, 1951.)

took care of the reserve dinner ticket sale. Miss Margaret Myles sang three numbers—"O, That It Were So," by Frank Bridges, a Negro spiritual, "Go On, Brother," arranged by Dett, and an old Ulster melody, "The Next Market Day," arranged by Hughes. Miss Myles was accompanied by Leonard Jacobsen.

Gordon Epperson played three cello pieces—"Apres Un Reve," by Faure, "Jazz Rondo" by Leroy Ostransky, and "The Swan" by San-Saens.

Dean Regester, guest speaker representing the administration, made the welcoming address to officially recognize AAUP on the campus. Dr. Magee, president of the local chapter, gave the acceptance speech and explained the future duties of club officers.

Mrs. Ella Mai Clark, chairman of the membership committee, announced that of the 78 faculty members eligible to join, 48 officially belonged.

Other club officers officially installed were Dr. Shelmidine, vice-president; Mrs. Carolyn Sullivan,

secretary; Murray Morgan, treasurer and Dr. Gibbs, Dr. Tomlinson, and Raymond Vaught of the executive council.

Forty-Five Days . . .

At the last board of trustees meeting on December 20, the governing fathers looked at the bids on the music building and scratched their heads. The lowest bid was some \$75,000 over what they had hoped for. Some discussion followed as to whether they should even go ahead with plans to build the long-hoped-for structure or not.

But finally the trustees decided to ask the contractor who had submitted the lowest bid (\$375,000) to give the college an extension of time. The contractor agreed, and the board had 45 more days in which to raise additional music building funds. Also, minor changes in the plans will decrease the total cost of the structure.

So, the fate of the music building hangs until February 7. Then the trustees meet again and make a final decision.

Eastern Journey . . .

Dr. Thompson's inner office was dark and empty this week. The CPS prexy is on an extensive trip in the east. He left during the Christmas vacation, and is in Atlantic City today.

President Thompson is attending the American Association of College Presidents' convention in Atlantic City. After the meeting, he will head for New York, Washington, D. C., and Chicago on further business.

He will be back in his office around the 18th or 19th of this month.

THE TRAIL STAFF

EDITOR	Don Jaenicke
BUSINESS MANAGER	Clint Gossard
SENIOR WRITERS	Lois Wasmund, George Victor, Nadine Kensler, Dorothy Ross, Dick Madden, Cece Reimer, John Macdonald
PHOTOGRAPHERS	Bob Rudsit, Dick Erskine, Warren Anderson
ART EDITOR	Jack Gallaher
SPORTS EDITOR	Doug MacArthur
STAFF	Bill Tudor, Marvelle Burris, Rosalind Phelps, Tom Gripp, Journalism Adviser
	Murray Morgan
CARTOONIST	John Clark
CIRCULATION	Pat Novak

This week's TRAIL salutes rollicking Rod Gibbs, ace center of the Loggers. If you don't think he's big, take a look at the cover where Rod is shown reaching for the rafters in a recent game with Pacific University.

Photo by Warren Anderson

CREWS

AUTO PARTS

38th & So. Tacoma Way
GA 7432

Richardson's

940 Commerce
TACOMA'S STORE FOR SKIERS

FOR QUALITY
DRY CLEANING
IT'S



1418 6th Ave. (at Cushman)
E. A. LANE, Owner BR 4116

HEROLDS CAFE

DELICIOUS
HOME COOKING

— Closed Monday —

3312 No. Proctor



HOYTS

BREAKFAST LUNCH

DINNER

AFTER-GAME SNACKS

2412 6th Ave.

Moellers Flower Shop

Corsages and Cut Flowers
Gifts

3823 6th Ave. SK 1351



Afton & Jays

THE HOME OF THE
BIG DOUGHNUT

Hamburgers

MA 9900 6th & Cedar

Quality ...

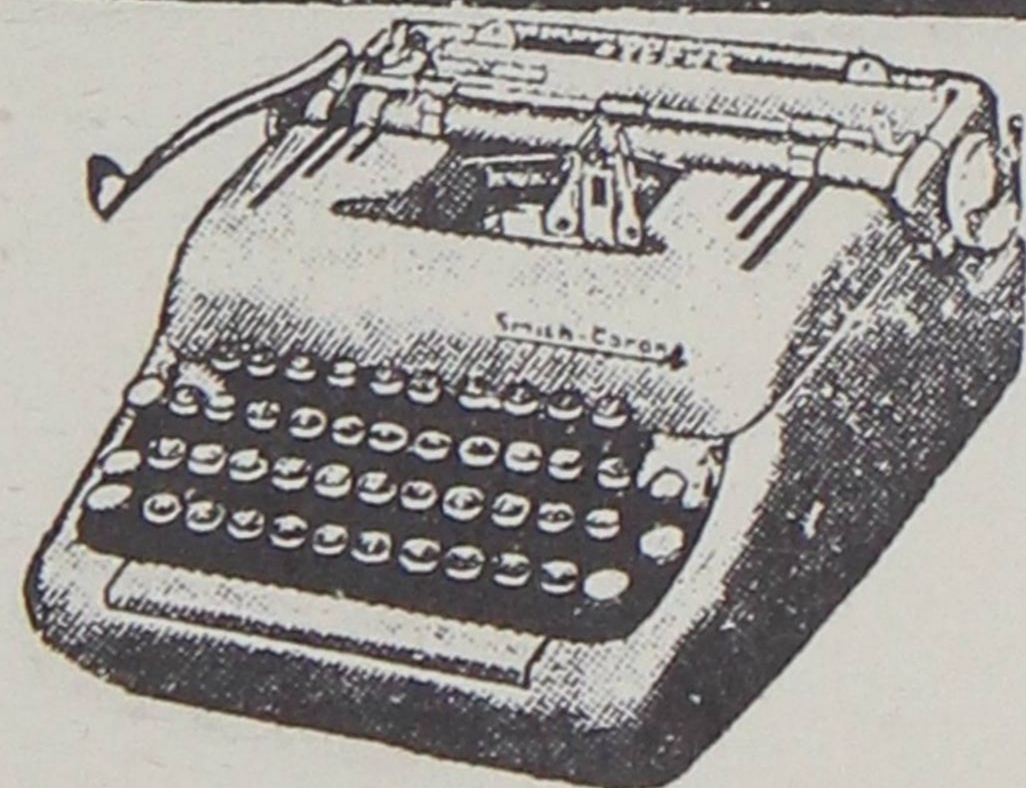
DIAMONDS
WATCHES
JEWELRY
SILVER
Since 1889

MIEROWS

Jewelers

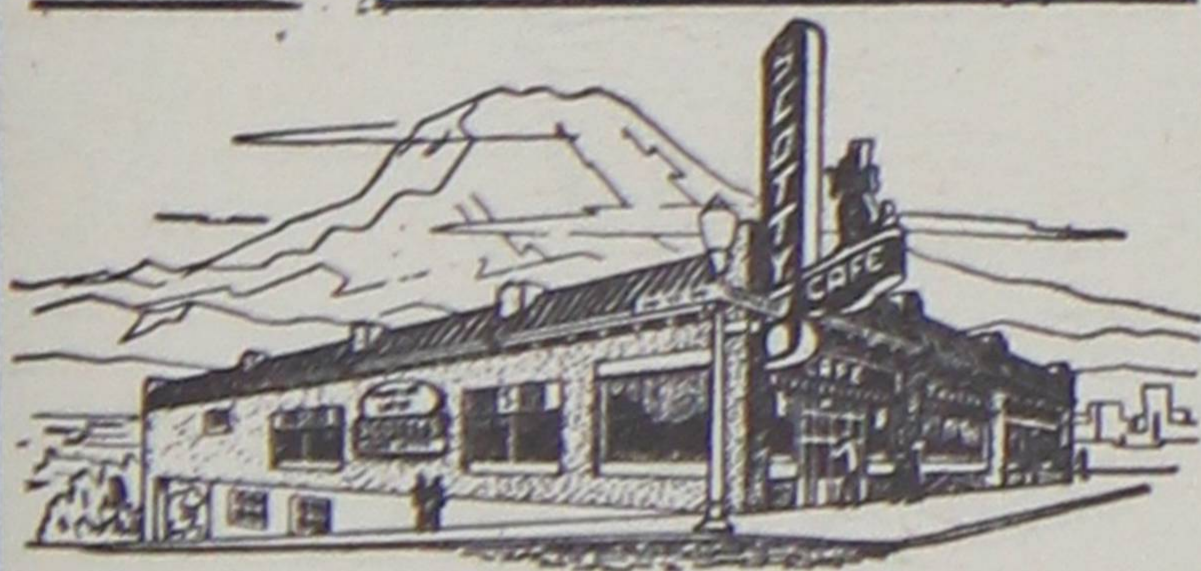
1105 Broadway

PORTABLE
TYPEWRITERS



H. D. BAKER CO.

1007 Pacific Ave.
BR 3228



The Latest Hits In
RECORDS
SHEET MUSIC

Ted Brown Music

1121-23 Broadway

BUDIL'S

Flowers
Corsages — Weddings
Cut Flowers

2614 1/2 6th Ave. MA 3890

DANCE PROGRAMS

Wedding Announcements
Tickets — Embossing

Allstrum Stationery & Printing Co.

714 Pacific, Tacoma MA 6768

PAT'S

HUNGRY . . . THIRSTY . . . LONESOME

2710 No. 21st

PAT'S BURGERS

SK 2422

Tacoma's Leading
Specialty Shop
for Women

Lou Johnson

755 Broadway
16 No. Tacoma Ave.
Lakewood Center

*Printing - -
Lithography
- - Engraving*

★
COMPLETE SERVICE

★ ★
**Allstrum Stationery
and Printing Co.**

Phone MAin 6768

714 Pacific

STOP AT —

V E R N S

Whamburger Deluxe
With Mayonnaise, Lettuce,
Pickle, Special Relish
Old English Fish & Chips
9th and Pacific



Get Complete **AUTO SERVICE!**

Lubrication • Radiator Flush
Washing • Battery Recharge

Accessories

Top Grade
FUEL OILS

3826 Sixth Avenue

**RADIOS and
Television SETS**

PR 3541

Exclusively at . . .

**WINTHROP
MEN'S SHOP**

Samuel Martin
Imported English
TOPCOATS

**IRISH TWEEDS
HARRIS TWEEDS
WEST OF ENGLAND**

\$65 — \$85

Warm Without Weight

WINTHROP HOTEL BUILDING

MA 6635

**ART'S GLASS
and
UPHOLSTERY SHOP**

Custom Tailored
Seat Covers
Auto Glass
Convertible Tops

WALT SWENNING
Student Owner

816 Tacoma Ave.

MA 2200

Jerry Walters

DIAMONDS . . . WATCHES
RINGS

MA 0466

938 Commerce

**FARLEYS
FOR FINE FLOWERS**

6th & Oakes

MA 1129

**DILL
HOWELL**

Complete Lines of
Name Brand

SPORTING GOODS

929 Commerce