

PNCC Delegate Applications Due Today at 5

The Pacific Northwest College Conference will be held at Whitman College at Walla Walla from March 3 to March 6. Two students chosen by a representative committee of A.S.C.P.S. will be sent from CPS.

Delegates will have to meet their own expenses for the congress at Whitman, but the two who go to the UN at Lake Success will have their expenses paid. **Anyone who wishes to go to the meeting at Whitman College may submit an application, but it must be in before 5 p. m. today.**

Schools from Alaska, western Canada, Montana, Idaho, Oregon, and Washington participate in this annual affair. The idea for PNCC has been copied by a college in St. Joseph, Missouri, which formed the Mid-American College Conference. Stanford, which formed the Western College Conference, held its first meetings last fall.

PNCC gives college students a voice in the UN and in world affairs. Its program is designed to awake youth's thinking by stimulating young men and women to a fuller acceptance of their responsibilities for good government; probing student thinking on problems of the UN; bringing students and future leaders together in closer contact and thus establishing a continuing educational project; and placing emphasis on student participation and sincere expression of student thought on world problems.

Troy Strong, who was one of last year's CPS delegates to PNCC and also one of two delegates selected to go to the UN meeting is on this year's executive committee. Subjects to be discussed are the little assembly; enforcement of UN decisions; the Marshall plan, its economic administration and political implications; UNESCO, and the responsibility of the press, radio, and movies in news presentation.

Resolutions adopted by the congress will be returned to the respective schools for referendum by the students. Two delegates will be chosen to take the approved resolutions to the UN at Lake Success.

Students manage all affairs at the congress. Some 10,000 students voted on resolutions last year. It is hoped that this year's meeting will be even bigger with a possible 75,000 students participating.

The TRAIL

1947-48—No. 13 COLLEGE OF PUGET SOUND, Tacoma, Wash., Feb. 13, 1948

March of Dimes Concert Tonight

The Tacoma symphony orchestra, sponsoring a "March of Dimes" program, will play at Jason Lee auditorium tonight at 8:15 under the baton of Professor Raymond Vaught.

Professor Clyde Keutzer, tenor, and director of the CPS music department, will sing four special numbers, accompanied by Leonard Jacobson at the piano. In addition, he will sing "Le Reve," by Massenet, accompanied by the orchestra. The four specials are: "None But the Lonely Heart" by Tchaikovsky; "This Little Light O'Mine," a spiritual; "When I Have Sung My Songs" by Charles and "Tankerton Inn" by Fisher.

The Adelpian concert choir will sing "Chorale and Finale," by Wagner. Orchestral numbers include "Academic Festival Overture" by Brahms; "Symphony in F" by Dittersdorf; "Song of Vermland" by Sandby; "Emperor Waltzes" by Strauss and "The Walk to the Paradise Garden" by Delius.

Price of admission is \$1.00.

Officers Petitions Must Be Filed By Next Wed., at 4

All petitions for student body offices must be turned in by next Wednesday at 4:00 p. m., according to Pat Mason. Also, only ten signatures are now necessary on the petitions instead of the usual 50.

Tests for the candidates will be given Thursday, Feb. 14. The offices of president, vice-president, secretary and Central Board representatives, May queen and yell leaders are open.

League To Sponsor Operetta One Night

That the Women's College League should sponsor the CPS operetta "The Pirates of Penzance" on one evening was decided Tuesday by Central Board. The league will take care of half of the expense for the operetta and will receive the proceeds from that evening's performance. Saturday night will be open to the associated students and admission will be by student cards.

Heinrich Says New Loop Good Idea

"The newly-proposed Evergreen conference will be a boon to sports in Washington schools," said Director of Athletics John Heinrich Wednesday. "This conference will promote a better spirit among the teams and be of financial benefit to the school administration."

After the game with Whitman next Monday and go to Yakima where he will meet Dick Smith, registrar, and conference of Athletic Directors and faculty representatives of Pacific Lutheran College. Eastern Washington, Western Washington, Central Washington, St. Martin's, Whitworth, Gonzaga, Seattle Pacific and Seattle College.

Representing Pacific Lutheran College will be Cliff Olson, director of athletics. Olson said, "This will bring many Tacoma boys back to Tacoma to play the local colleges rather than the Oregon and Idaho state schools playing to small crowds."

A must for the league will be that schools entering must perform in the four major sports, football, basketball, baseball, and track. Gonzaga does not have football in their curriculum but are considering returning to the gridiron.

"The competition and rivalry would become greater because of the nearness of the other campuses and a greater familiarity with the Washington state schools," says Heinrich. Although CPS has a tentative football schedule for next fall, no contracts have been signed and they can enter if the league is formed.

"If the league were formed from six or eight of the colleges represented at Yakima, it will be incorporated under a commissioner and be very similar to the rules of the Pacific coast conference," said John Heinrich in closing.

Music Department

The Music department of the College of Puget Sound has been approved as an associate member of the National Association of Schools of Music.

At present the Music department has a staff of 13 and over 500 students.

Whitman next Monday leave the basketball team

Twenty Colleges In Debate Meet

The Tyro debate tournament will take place at the College of Puget Sound Friday and Saturday, Feb. 13 and 14. Twenty colleges from Washington, Oregon and Idaho will take part in the tourney. Approximately 153 persons will debate including 60 from the College of Puget Sound.

An addition to the regular Tyro tournament will be the formation of a small scale United Nations congress. Troy Strong will act as general chairman and the group will elect a secretary and parliamentarian.

Forms of debate will be extemporaneous, impromptu, oratory, and after dinner speaking. Judges will be selected from the faculty, older debate members, and coaches from other debate teams.

Awards will be given to the winners of each event and a grand sweepstakes award for the school garnering the most points.

The Tyro tournament is restricted to those debaters having one year or less of actual competitive debating.

World Affair Meets Slated For Lounge

A Coffee Hour, sponsored by the Student Christian Association, for the purpose of discussing important topics of the day, will be held each Tuesday and Thursday at 10 in the Sub lounge.

For the next two weeks the subject of the programs will be "Understanding Russia." The same material will be covered on both Tuesday and Thursday of any one week.

Next week Dr. Warren Tomlinson will talk on "Russia and her relations with the world." Dr. Hugh Tudor will speak on the "Government of Russia" on Feb. 24 and 16.

French Orphanage Visited By Former C.P.S. Student

By Gloria Nelson
"I just don't know how to describe the unfortunate situation that those boys are in. They do not have enough food, not enough clothing, not enough heat, not enough money. As for toys, I did not see anything but a few building blocks."

This excerpt is from a letter addressed to the "student body of CPS" from William Lawrence, former CPS student who recently visited the Orphanage de Bon Secours in Paris.

New Recreation Course Offered

A new course in "Playground Administration and Operation" to be taught by Thomas W. Lantz, superintendent of public recreation for Tacoma will be offered by College of Puget Sound this semester, it was announced recently by Dr. R. Franklin Thompson. Dean John Regester and Lantz have worked jointly to establish a full curriculum in recreation. Lantz's course on playgrounds is the beginning of a full program leading to a major or minor in recreation.

Majors and minors in such fields as sociology, biology, music, drama, and physical education are especially urged to consider study in the field of recreation. "Playground administration and operation," officially designated as recreation 46 will carry two hours credit. The class period will be from 8 to 9:50 on Tuesdays.

Lantz, authority in the field of community recreation, said that this new course will include lecture and discussion periods in addition to practical work on Tacoma playgrounds.

According to Lantz, the rapid growth of community recreation in the last ten years has led to a strong demand for college-trained recreation personnel. Industrial and hospital recreation also has expanded to the point where the demand for qualified professional recreation workers far exceeds the supply.

The beginning of a recreation department at College of Puget Sound is in line with the trend toward the offering of recreation major and minors at such colleges as University of Wisconsin, Washington State College, and University of Southern California. Some state departments of education have recently made provisions for the certification of recreation as a teaching minor.

Special Speech Classes to Open

Special classes for students with speech defects will be offered on Tuesday afternoons and Thursday mornings starting the last week in February, Mrs. Bernice Riehl, speech instructor, announces.

Those interested will be asked to fill out questionnaires which will be distributed through the English classes. However, Mrs. Riehl emphasized that this opportunity is not limited to students in those classes, but any one troubled by speech defects can obtain information about the program from her or from Miss Jones, head of the speech department.

The speech department feels that this program is in keeping with the CPS tradition of personal service to the students rather than mere mass education. "More and more, we are seeing that speech defects stand in the way of advancement for many otherwise capable people," said Mrs. Riehl.

Books Expected Soon In Bookstore Here

All books necessary for the current semester's work are expected within the next few days at the college bookstore by Mrs. Lela Schiffbauer, manager. Volume two of "The Literature of England", which was ordered by Mrs. Schiffbauer early in the last semester, has been temporarily delayed at the publishers due to unforeseen circumstances, but is expected daily.

Coming Up . . .

- Today: O.T. meeting, 4 p.m.
- Tomorrow: Inter-sorority Tea, 3-5 p.m.
- Tomorrow night: Women's Federation Tolo, 9-12 p.m.
- Tomorrow Night: Basketball CPS frosh vs. U of W frosh
- Monday: Psychology club, 7-30 p.m.
- Thursday: Ski Club SUB, 4 p.m.

"The classroom, as bare as Mother Hubbard's cupboard, is furnished with desks and benches—five or six boys to a long desk," he continued. "They have some books, but not anywhere near enough to go around. The boys spend their day in class or recreation but, when there are visitors, their instructor has to leave them to study their lessons. With just two women in charge, things can not be handled differently. We arrived just in time to see a fight, some tears shed, and a general scramble. These boys do not know how to play when 'Teacher' is gone."

In response to requests that the de Bon Secours orphanage drive be left open longer than one week, it will be reopened next Tuesday and Wednesday. Contributions will be received by the Inter-Collegiate Knights at a table in lower Jones Hall.

With \$865 received to date, there are about 225 pledges left unredeemed, amounting to about \$300, estimated Bill Ellington of International Relations club.

Those who have not yet redeemed their pledges after next Wednesday will be personally contacted by committee.

The letter which he wrote in response to a request for information from CPS Publicity Director Bill McNamara, begins: TO THE STUDENT BODY OF C. P. S.

Your recent decision to adopt the boys in the Orphanage of "Bon Secours," here in Paris, came to my attention through a letter from Bill McNamara, and, as a consequence, I profited by the first free afternoon at the Sorbonne to visit the boys and see just how much help they may need.

My wife and I found the orphanage easily, it is a rather large building, withdrawn from the street, with a large yard enclosed by a high brick wall. There is plenty of room, the playground is rather well-kept, the ground surface is covered with cobble stones and paving, with some small, neglected patches of grass here and there.

The neighborhood was nice in the past, but has now degenerated into a slum district—poverty can be seen on all sides. Miss Stekler, the directress, was not in so Miss Palon, the superintendent, welcomed us. She is a charming woman in her thirties, has a pleasant smile, and strong eyes that sparkle with the desire to furnish a good home for her boys. We talked about the home, its history, its problems and then made a short inspection tour of the building.

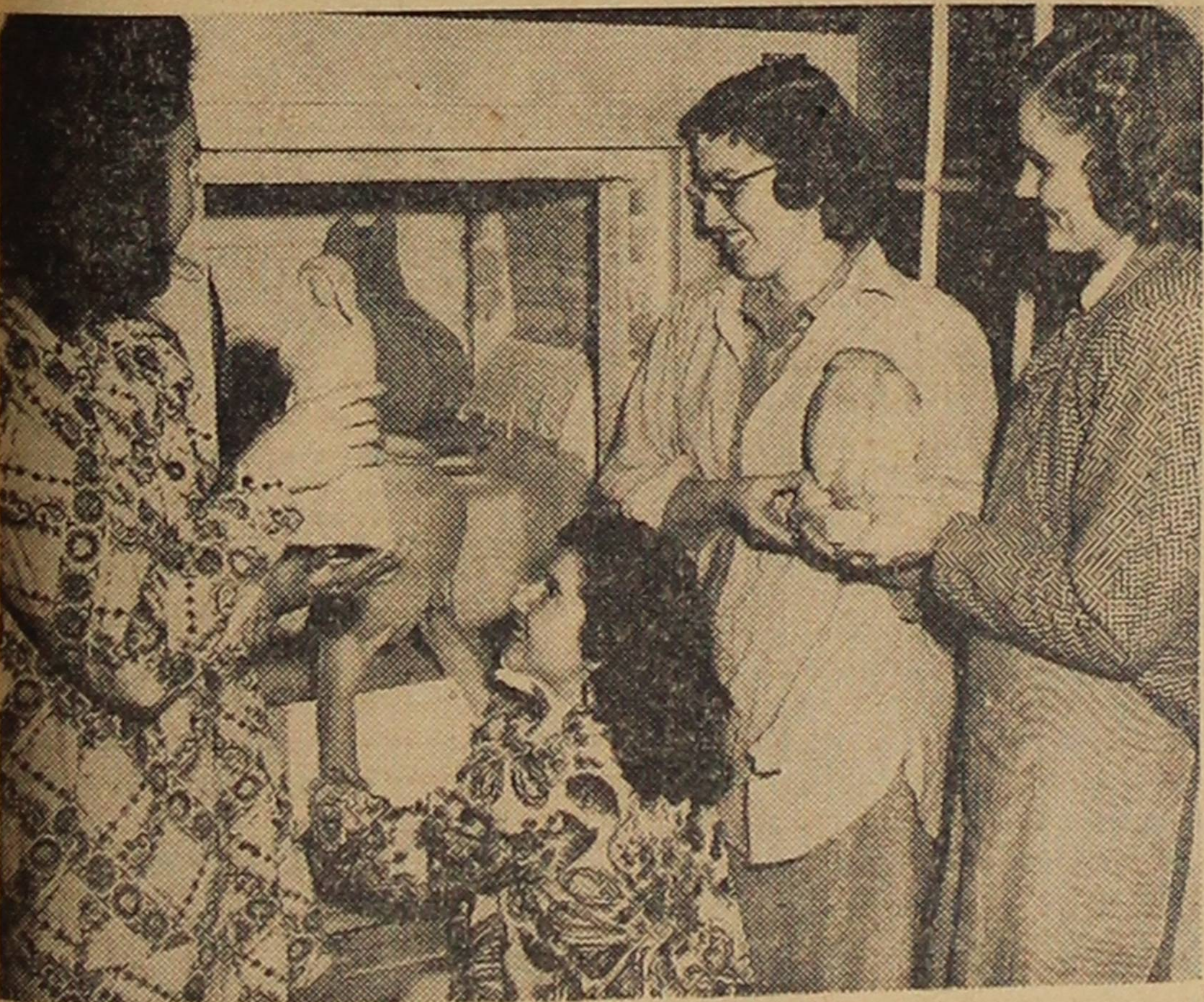
Home Closed During The War

The home was closed during the war, and was reopened in 1945 by an elderly couple who just couldn't cope with all of the problems. Consequently, Miss Stekler took over in October of 1946. She had more work than she could handle, and Miss Palon came to give her a helping hand in December of the same year. At that time, they had only twelve mattresses and twelve sheets to start with! Thanks to the aid given by several Swiss organizations and many American groups, they have increased their capacity to thirty-five beds. They would like to take even more boys, but their financial situation will not permit it. As things are, the few boys that they do have are not well enough cared for—they need clothing, food, and bedclothes quite badly.

The large dormitory, a room with twenty-foot ceilings, has been repainted, and is now more or less acceptable. All of the beds have mattresses, one sheet, and a blanket—far from enough. In spite of the easy winter, several of the boys are confined with colds. The room is not heated, is bare of all decorations save for "The Lord is my Shepherd, He Leadeth me to lie down in green pastures. . . ." We looked into the linen closet—I could write a book about what there ISN'T in that closet, it is really pitiful.

We Americans feel that a bed should have at least four sheets; well, all in all, for thirty-five beds, there are no more than fifty sheets and all are in questionable condition. That's all. What linen there is in that closet could be carried in one man's arms.

O. T. Department Now In South Hall



The new kiln bought from army surplus for ceramics work being put to use by four O. T. students.

New Policy to Give Degrees in O. T.

When occupational therapy students are asked to define the field of their endeavor, they usually chant, "Any activity, mental or physical." Established in 1944, the occupational therapy department, under the direction of Miss Edna-Ellen Bell, opened last week in new quarters in the south wing of South Hall. The move gives the department more rooms and better facilities. The department is fully recognized by every agency with which it deals, including the American Medical Association, and is the only similar department in the Northwest enjoying such recognition. Among its working affiliations are several Canadian and United States government hospitals. Miss Bell ultimately hopes to be connected with all of the 25 institutions in

the area with which affiliations are possible.

A new administration policy is expected to help the department, for students will now be given bachelor's degrees in O. T., instead of the biology degrees given previously. At present, there are 33 O. T. majors and numerous students from other departments.

As Miss Bell explains, occupational therapy must concern itself with both science and art, and O. T. certificate candidates must have more than a nodding acquaintance with both. As a rule the person who handles a leather punch or a paint brush well, will have difficulty with psychology and anatomy textbooks, or just the opposite. To gather such different skills into individual minds is a task peculiar to a teacher of O. T.

Although businesslike, the material in the O.T. rooms is varied enough to be disconcerting. Besides the usual desks and book-strewn tables there are saws, hammers, an anvil, looms, paint-



Miss Edna-Ellen Bell, Occupational Therapy department and a student at one of the looms in the new quarters in South Hall.

pots, and a butane kiln for clay products.

With her position on the campus, Miss Bell holds the following offices and honors: advisor to the Tacoma Occupational Therapy Workshop; advisor to the state tuberculosis association; councilor for the American Association for Crippled Children and Adults; and delegate and secretary to the American House of Delegates. Last year she was selected to develop plans for a new O. T. clinic at the University of Oregon and she has been ac-

tive in several other programs, both local and otherwise, in her field.

"Outside of the humanitarian interest of their studies, students may also expect economic advantages," says Miss Bell. "I have literally twenty calls for each graduate. Occupational therapy is a comparatively new field and a constantly growing one. I enjoy my work, but I enjoy it all the more for knowing that there is a great need and a read demand for the students who pass through my hands."

Now We're Loggin'...

Here we go again. Two minutes before deadline and also on Friday the 13th, and we're knocking ourselves out so we and our relatives can have something to read.

Tolos are swell! The girl does everything. She tells you what flowers to buy, where to get the tickets, the meal, a car and how to drive it. Then you have to go home.

Opera Review - We are printing this so you people taking music appreciation will have something to copy. We were sitting in the good seats of course. We were up so high we got spirit messages. If we had worn hats we would have had to duck to keep from being hit by the Pittsburg mail plane.

The opera is a simple story, written by a simple musician. It is about a cigarette girl (roll our own specialist) who falls in love with soldiers, bull fighters, sailors, bandits, bulls, wall street brokers, and the janitor at the Temple theatre. She sings about all of these loves, yah, sings. Suddenly people are dying (the bull included) which rings up an interesting point. You can always tell the end of an opera by the number of people that are dying.

After the show we went to Flannigans den of Eniquity to rub elbows, (we have to mix you know) with the hoi polloi such as Brad Mottau in top hat and tails (no shirt, coat, shoes, suspenders, garters or cufflinks.) Dave Evans relaxed in the corner reading Plutarch and eating sesame seeds. Ed Notley playing quaits with Jim Driscoll and old Weldon Howe looking peppy as ever.

The Indies Inkling is running the Trail tremendous competition and it's not fair cuz they don't have to go thru all the censors that we do.

Say fellas—girls please don't read this—why don't we make an institution out of those basketball games at the "Y", The Y.M.C.A. basketball floor is the only place C.P.S. students of all denominations (any race, creed, color, fraternity or even Klu Klux Klan members) can get together for a jolly game of basketball and beat each others brains out.

"All that's needed to join the Stan Langlow, Carroll Walter, Dick Lewis fan club is five cases of yeast, one aspirin tablet and it tastes like champagne." Yah, and everybody looks like a champagne bottle.

We noticed Jim Bell, Corly Bonham, and Bob Kennedy selling slightly chewed erasers to earn a couple of pennies so they can "crown Brown".

Before we tear off to Pat's for our daily glass of cyanide we want to give Betty Barkost and Merrillat Betz the following good word about their horseback

Bands to Give Concert Mar. 7;

Featuring such swing arrangements for full concert band as "Funiculi-Funicula" and "Deep Blues for Trumpet and Band", the concert band will present a type of performance new to the CPS music department in their concert in Jones Hall Sunday afternoon, March 7. They will begin a tour with the workshop band of Eastern Washington high schools the week following.

Growing out of an idea by Professor Keutzer and John O'Connor that the traditional Sousa type of band program should be augmented by something in a more modern vein, the new approach is considered a solution of the problem of what to do with high school instrumentalists, trained in the earlier type of band playing, who have come to college with a desire to further their musical education, but not equipped for the swing technique.

Students specializing in public school music will have a chance to conduct the band. Numbers will be conducted by Jay Ball, Stephen Radnich and G.

SWAPYBURGER
DINNERS — STEAKS
HAMBURGERS
Home Made Pies
618 No. Pine St. MA 9685

SEARS
BROADWAY At 13th

GORDON HILL & guest are invited to enjoy at no charge a
"HAMBURGER in the RUFF"
RICHARDS SIXTH AVE. AT SPRAGUE

riding. "Don't worry about last Monday. It gets worse."

And just at deadline time, Jack McMillan came in with Tom Ruffin's knitting and asked us to run a column giving instructions on how to knit soakers. If they're lucky we might have such a thing in the next issue

Movie of the Week—LAST OF THE MOHICANS. This is just another movieland movie. Same old plot. Girl meets Indian, Indian has oil wells, Daniel Boone hates girl and gives her scar on forehead with hatchet. Indian hates girls with hatchet scars on forehead so gives girl the brushoff, girl gets revenge by revealing Daniel Boone's speculation in the grain market to Senate. Story ends with Boone and Indian both hating girls and making a round-the-World-flight-in-a-P-38. Little Eager Beaver (who is old for his age) gets girl.

McMillin Quits Zeta Post After 22 Years

Twenty-two years as advisor of Sigma Zeta Epsilon came to an end recently for F. A. McMillin, professor of geology at CPS, as he resigned when that fraternity joined the Kappa Sigma national fraternity.

"During those years, they acquired their house, went through a depression and fought a war," reminisced the professor, who was appointed advisor to the fraternity by Dr. Todd in 1926.

Professor McMillin, who is a member of Pi Kappa Phi national fraternity was feted at a farewell banquet at Dittmore's last Saturday evening.

Dr. Springer, alumnus of Sigma Zeta Epsilon, has been appointed to fill the post of advisor to the fraternity.

SORORITY COUNCIL WELCOMES RUSHEES

Girls who have been attending C.P.S. the previous semester and want to pledge a sorority are asked by Beverly Johnson, spring president of Inter-Sorority Council, to give their names to Mrs. Drushel, Inter-Sorority Council, which coordinates all sorority activities, is composed of the president and a representative of each of the four sororities. The office of president rotates each semester among representatives.

Mankertz, students of the conducting class offered for the first time this year.

In addition to the sixty piece concert band and the Workshop dance band, all of whose members are also in the larger ensemble, the program is to include a mixed vocal quartet made up of Gordon Voiles, Prince of Melody, Gloria Kristofferson, Princess of Melody, Bill Clem, and Olive Tuttle. One of their numbers will be the concert band arrangements of "Alouette", with French lyrics. They will make their debut at the March 7 concert.

Budil FLOWERS
6TH AVE. & OAKES
MAIn 3890

HANDCRAFT DOUGHNUTS
Complete Fountain Service

AFTON - JAY'S
Sixth Ave. at Cedar

SORORITIES HOLD TEA FOR GIRLS

Tea will be served tomorrow afternoon from 3 to 5 at Anderson Hall. Hostesses for this affair will be the inter-sorority council. All women students on the campus are cordially invited to attend. Various sorority representatives will be in the receiving line.

The popular Campus Trio composed of Anita Stebbins, Clara Bowe, Mary Lou Cooper and Nancy Newell, accompanist will give musical selections. Nancy Riehl will give a reading and Gloria Kristofferson will sing.

Decorations will follow the Valentine motif. June Larson is the decoration chairman. Aleatha Mae Dietrick is chairman for the event. Other committee chairmen are Gwen Roberts and Mollie Mae Morse.

Sweetheart Theme For Gamma Dinner

This evening, the members and pledges of Delta Alpha Gamma will attend a progressive dinner. Chairman of the affair is Marleen Lutz. Girls in whose homes courses of the progressive dinner will be held are Barbara Bell, Jo Goodrich, Ruth Wollen and Betty Gastfield. Girls from the dorm will serve coffee in the Sub as the last course of the dinner. A Sweetheart theme will be featured in the house decorations.

D.K. Father's Night Held Last Saturday

Last Saturday evening, Feb. 7, the Delta Kappa Phi fraternity held an informal fireside in honor of their fathers. In charge of the affair was chairman Bob Hill.

Dean of Women Former Graduate of University of Puget Sound

CPS' Dean of Women, Mrs. Lyle Ford Drushel, is a graduate of the University of Puget Sound which is the former name of ye old alma mater. Mrs. Drushel attended the college when it was located at 6th and Sprague. To refresh your memory, that's where Jason Lee is now. At that site the college stood in all the splendor its wooden buildings could afford.

ACTORS APPLY FOR NEW ROLES

Anyone interested in taking part in college dramatic productions anytime during the second semester is urged to leave his name, address and telephone number on a pad which has been placed on a bulletin board outside room 202. This room is located inside the second floor entrance to the auditorium, to a person's right as he enters.

"We would like to have lots of people sign up," declared Martha Pearl Jones, head of the dramatic art department, "whether experienced or not."

The productions for the spring semester will consist of the annual evening spring play which will be on April 30 and May 1; a group of workshop plays ranging in length from three to 20 minutes; and a one-act comedy for the high school debate tournament to be held here March 12 and 13.

THE HUB
For Nationally Known CLOTHES FOR MEN

Bertucci & Morris
PARKING STATION
9th & Market MA 9518
Tacoma, Wash.

MECCA CAFE
Always Open
13th. and Commerce TACOMA

SKIING EQUIPMENT and CLOTHING
SALES & RENTALS
Washington Hardware
SPORTS SHOP
918-20 Pacific

Candidates for Valentine Royalty



Photo by Grant Barker
Two of the above will be crowned tomorrow evening in impressive ceremonies at the FWA tolo. Pictured left to right, first row, Jim Beyer, Indie, Jean Tippie, Indie, Betty Kornmeser, Gamma, Betty Harold, Lambda, Lorayne Rockway, Theta, Bruce Anderson, Chi Nu and Shirley Kinnane, Beta. In the second row are Gene Brown, Mu Chi, Ray Turcotte, D. K., and Warren White, Omicron.

British MP Here

Dr. Lyle S. Shelmidine of the CPS history department had a distinguished house guest early this week in the person of Edward A. A. Shackleton, British Labor member of parliament and explorer, who delivered two addresses in Tacoma Monday while visiting in the Northwest. Dr. Shelmidine is president of the Tacoma branch of English Speaking Union.

Wells Hall Scene For Annual Tolo

Bows and arrows will definitely be in order tomorrow night at the annual Women's Federation Tolo, to be held in Welles Hall, on the corner of 3rd and K st. Reigning over the affair will be the Tolo King and Queen of the year. Elected by penny votes, the newly elected royalty will be crowned during intermission by Dr. Thompson.

Ivy Cozart and his orchestra will provide the music for the evening and couples will dance from 9 to 12 o'clock.

This tolo has been an annual affair for many years and the election is the only means by which the association raises funds to operate during the year. The dance is informal and tickets are \$1.50 per couple.

Drushel is a member of the English department.

In her work, she finds herself in many difficult and novel situations. Once a young girl came into her glass enclosed office with a troubled look on her face. She related a tale of family mixups including this campus coker. It seems the girl's brother found himself engaged to two girls at the same time and would Mrs. Drushel offer some solution?

Mrs. Drushel says, with a smile on her face, "My proudest thought is that the students I have taught through the years are my best friends."

Jetland Palagruti
MEN'S CLOTHES
PACIFIC AVENUE

Fisher's

Rhodes
The Quality Store, Tacoma

It's Fun To SKATE At
KING'S ROLLER RINK
EVERY Night 7:30 - 10:00
Sunday Afternoons, 2:30 p. m.

The Smooth Setting of the Lazy Country-Side
Is Yours At
COUNTRY HOUSE
(FORMERLY RAU'S)
CHICKEN DINNERS
FOR RESERVATIONS Call GR 9979

Kappa Sigma Installs Zetes Friday, Sat.

Tonight will mark the installation of the first national organization on the College of Puget Sound campus. The local fraternity, Sigma Zeta Epsilon, will become the Epsilon Lambda of Kappa Sigma. Planning on attending the ceremony, are 200 Kappa Sigs and 80 Zete initiates. Four members of the Supreme Executive Committee will attend. Representatives will be on hand from the chapters at the Universities of Washington, Oregon and British Columbia, Oregon State and Washington State College.

The Zetas are among three groups throughout the country which have been accepted into Kappa Sigma in the last year out of some sixty petitioning groups. The other charters were granted to the University of California at Santa Barbara and Bowling Green University at Bowling Green, Ohio.

In 1922 a charter was obtained from the school for Sigma Zeta Epsilon and, in 1924 Professor F. A. McMillan became advisor for the group and has retained his post until the present time, when he must retire because of his affiliation with a different national organization. In 1926 the Zetes purchased a house which has remained with them to the present day. Now owned by the alumni it will continue to be owned by them and rented to the active chapter.

Only once in the history of the fraternity has there been a period of complete dormancy on the campus. In 1942 the membership declined and it was decided to discontinue the organization until the war was over. With the coming of new students and returning of old members after the war, the fraternity again became active.

CHI NU'S ELECT OFFICERS

Newly elected officers of Alpha Chi Nu fraternity are president, Clarence Nelson; vice president, Bill Garrison; secretary, Dick Nicholson; house manager, Ralph Hansen; Sgt. at arm, Dave Granland; representatives to Interfraternity Council, Clarcuto; treasurer, Dick Gass.

TED BROWN MUSIC
The Latest in RECORDS or SHEET MUSIC
1121 Broadway

THE BEST IN FLOWERS
ST. HELENS FLORISTS
632 St. Helens MAIn 9576

GRANITIZE WAXING
MOTO SWAY LUBE
ACCESSORIES
Agather Shell Service
Division & Yakima

GOOD GROOMING
is always important.
Care for your
Clothing by Having
Spots Removed as
Soon as Discovered.
They rot the fabric.
WASHINGTON,
Your Cleaner,
Does it Right.
CALL
BR 4 1 1 6

Washington Cleaners
E. A. LANE, Owner
Sixth at Cushman

Oooh! We May Play Glads Again

John's Strategy Helps Loggers Thump Glads

The CPS Loggers were not too excited after winning the PLC game and the Tacoma Intercollegiate title, for they realized the pressure ahead.

The Loggers leave today to play the College of Idaho tomorrow night, Whitman, Monday, Willamette, Friday (at the Armory), Linfield, Saturday (at the Armory), University of British Columbia (at the gym) on Tuesday, Willamette (there) on Friday, Lewis and Clark (there) on Saturday, and then maybe to Gonzaga and if we win, the Gladiators again.

Playing fast close ball in the second half following the dressing room strategy outlined by Coach Heinrich, the Loggers outscored and outplayed the PLC Gladiators last Tuesday night to win 51 to 35.

At the start the Loggers and Gladiators exchanged basket for basket until half time when the score was 17-16 in CPS favor (something new).

In the first half the close checking and heads-up ball of forward Hoff was outstanding. Don's shots were well chosen and sure. Angeline could not find the range but played excellent ball alternating with Sawyer and Stivers.

The fast back court action combined with front court work of Fincham, Hoff, Danielson and Rinker kept the Loggers constantly alive.

Coach Heinrich in an interview Wednesday said "The fighting spirit and the teamwork of the basketball squad with live-wire sports fans has kept us on top all season."

The Lutherans were kept in the game by little Steve Tyo. Steve poured one handers through the hoop consistently when left open for just a second.

The second half opened and the Loggers began correcting their first half mistakes. They were controlling both back boards with excellent play by Danielson, Hoff and Rinker, and getting back fast to get their defense set.

Soon after the half Sawyer, Stivers and Angeline began a terrifically fast game which soon began to tell on the already tired Lutheran five. Rinker got a tip-in and Angeline potted three baskets and the Loggers were leading by nine points, never to relinquish the lead again.

Harry McLaughlin, played the complete game. Although closely checked by Danielson, Rinker, and Brown, Harry scored twelve points and constantly kept the Gladiators hustling.

In the final two minutes of the game the Loggers scored at will on a weary but determined Lutheran five. Fincham scored a lay-in on a well executed pass from Rinker, Angeline made a gift toss, and Stivers finished the game with a smooth toss from side court.

The referees, McCullough and Murray, were imported from Seattle to alleviate any local prejudice. Their ability on calling fouls was never questioned by the teams or the hotly-spirited fans. They kept the game clean and fast.

Angeline was high point man with thirteen, closely followed by McLaughlin from PLC with 12.

College of Puget Sound (51)

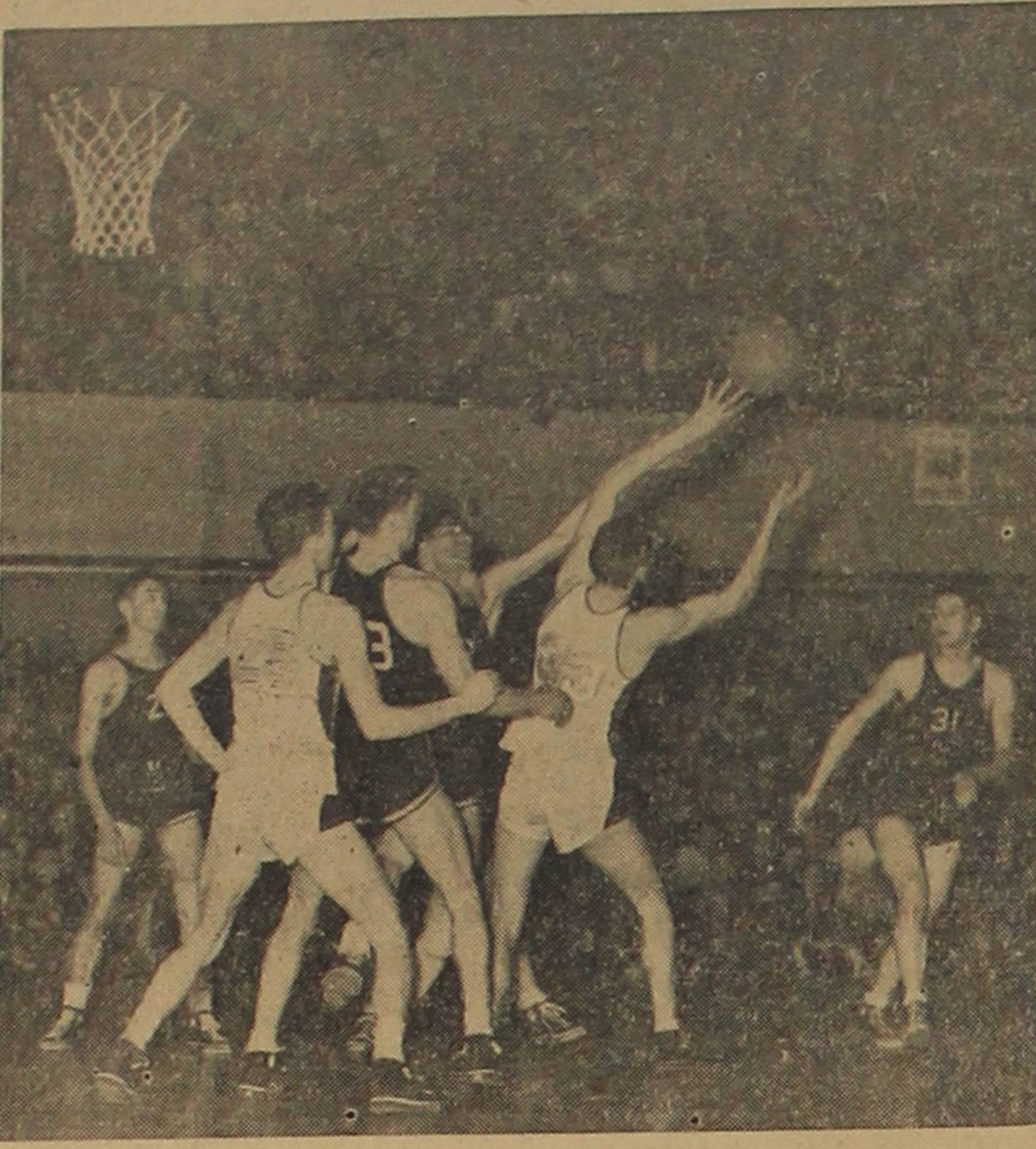
	FG	FT	P	F	T	P
Hoff, f	3	2	3	8		
Fincham, f	2	1	2	5		
Rinker, c	2	1	2	5		
Stivers, g	3	2	1	8		
Angeline, g	6	1	2	13		
Brown, c	0	0	3	0		
Danielson, f	2	1	2	5		
Sawyer, g	3	1	3	7		
Sater, f	0	0	0	0		

Totals 21 9 17 51

Pacific Lutheran College (35)

	FG	FT	P	F	T	P
Saxton, f	1	1	3	3		
Lundgaard, f	3	0	2	6		
McLaughlin, H, c	4	4	1	12		
Jurovich, g	2	2	3	6		
McLaughlin, W, g	0	0	1	0		
Tyo, g	4	0	1	8		
Kauth, f	0	0	3	0		
Schafer	0	0	0	0		

TOTALS 14 7 15 35
Officials: McCullough and Murray.



Bob Rinker (33) stalwart Logger center and Capt. Bobby Fincham (25) are shown above going for a rebound in a crucial moment of last Tuesday's game.

Intramural Program Bolstered By Bird for Spring Semester

GRUNTERS SHOW AFTER FROSH U. OF W. TILT

The Loggers are staging a wrestling meet with the U of W immediately after the CPS-U of W frosh basketball game tomorrow night.

At half time of the basketball game the scoring and rules of intercollegiate wrestling will be demonstrated.

The Washington mat team is being mentored by Norman Burke and Don Dilly, former CPS students. Burke has won numerous Northwest AAU titles and Dilly placed third in the National AAU tournament. Ivar Ostlund, who wrestled at the Tacoma Y.M.C.A. and who has several Northwest championships heads the Huskie squad.

Eight bouts are on the card for Saturday night, but only two CPS grapplers, Skip Norton and Dan Bigger, have been named by Coach Bird as yet, the others will be determined tomorrow afternoon.

The game starts at 7:30 and the wrestling at 9:00. Adults will be admitted for 50c, which covers games and matches. Students with ASCPS cards will be admitted free.

College of Puget Sound (68)						
	FG	FT	P	F	T	P
Hoff, f	0	1	3	1		
Fincham, f	6	4	3	16		
Rinker, c	3	0	3	6		
Stivers, g	1	3	4	5		
Angeline, g	7	4	4	18		
Blevins, g	0	1	3	1		
Brown, c, f.	1	1	2	3		
Danielson, c, f.	3	0	0	6		
Wolf, c.	0	2	2	2		
Sawyer, g	2	5	3	9		
Blanus, f	0	0	0	0		
Sater, f	0	0	0	0		
Salatino, g	0	0	0	0		
Heselwood, g	0	1	0	0		
Burrows, f	0	0	0	0		
	23	22	27	68		

Loggers To Face Husky Volleyballers

Intercollegiate volleyball has returned to the C.P.S. athletic program. Harry Bird, who is assuming the role of coach, received an invitation to compete in a two way round robin tournament at the University of Washington to be held February 28 and 29.

Harry hasn't yet received information regarding what other teams besides the University will compete, but there will be teams from colleges all over the northwest.

The first turnout, called last Tuesday at 2 o'clock, showed promise according to Harry, who is optimistic about the team's chances. The team seems assured of having several lanky spikers as well as clever feeders.

The turnouts will be every day, Monday through Friday at 2 o'clock in the gym.

PE Grading System

The grading systems in the Physical Education and Athletic departments have been changed. Grades will be on an A to E basis instead of Satisfactory and Unsatisfactory. The change was voted by the faculty at its regular meeting after Harry Bird argued that it would offer increased incentive. The S and U system was adopted last year.

Usual Rally Whips Whits

NORTHWEST CONFERENCE					
	Won	Lost	PF	PA	
Puget Sound	6	1	434	344	
Willamette	8	2	611	494	
British Columbia	6	3	512	483	
Linfield	4	3	378	380	
Whitman	3	6	418	528	
College Idaho	3	6	494	513	
Lewis and Clark	3	6	424	442	
Pacific U	2	7	375	462	

By Louis Raphael
The 12-man CPS traveling squad left today for Caldwell to play the College of Idaho tomorrow in an important Northwest League game. The Coyotes have won four league games on their home floor, including—Oh Happy day—one from Willamette.

Clinging to their newly-regained conference lead, CPS Loggers opened up with a whirlwind attack in the second half to overpower Whitman's Missionaries 68-49 Saturday night in the Logger gym.

Whitman was out in front 28-22 at the midway mark by virtue of the accurate shooting of Anderson, Bartlow and Hobbs.

Angeline, speedy Logger set a blistering pace in the first minute of the game by bucketing two shots from the key, the first a neat lefthander and the second, a running one hander.

Whitman countered almost immediately with Anderson contributing two shots almost identical to the first CPS scores to even the score 4-4. Then Bartlow, Whitman captain and forward, hit a long pusher to put his team in front.

The Loggers evened the score at 8-8 only to have Whitman pour in seven points while Rinker's tip-in kept CPS from scoring famine.

Bill Stivers added a free throw, Angeline contributed a deftly-executed lay-in and Heselwood another charity toss. Rinker batted in another tip-in shot and Fincham countered on a short onehander to cut the Whitman lead to six points.

CPS checked downturn in the last two minutes of the first half in an effort to steal the ball but the boys from Walla Walla hung onto the sphere their share of the time and left the floor leading 28-22 at the half.

Angeline opened the second period with two charity tosses and a running one-hand shot from the side of the key, while Anderson of Whitman sandwiched a neat push shot in between the CPS scores to raise the ante to 30-26.

Then Bob Fincham canned a field goal and followed with a swishing charity throw.

Rinker's onehander from the foul line pulled the Loggers in front never to be headed.

Another foul try by Fincham and his bucket from the side lengthened the CPS lead 34-31 before Hobbs converted two free throws for the Missionaries.

The Loggers thoroughly dominated play in the latter period and won going away. Whitman was crippled by the loss of Anderson and the center, Bob Garrett on fouls and Bartlow, who twisted his ankle badly in the first half.

Angeline led the scorers with 18 followed by Fincham with 16.

"FLOWERS from BUD'S"

K ST. FLORAL

Special Rates to Students

618 South K MA 6611

Open Evenings and Sundays

Let the Chips Fall

By Mac and Cece

This is a slight reaction to the Parkland smoker of our southern friends as expressed by Bob Andrews in "Sports Slants," his column in the PLC Mooring Mast.

"Hats off to the fine sportsmanship which the PLC student body displayed at the game Monday night, by keeping their heads and not starting a free for all when the excitement of the game caused a few of our crosstown visitors to lose their heads."

And she will bake Star forward for Whitman, "Chuck" Anderson, had a birthday last Saturday. Anderson's gal baked a cake for him and his teammates brought it all the way from Walla Walla to surprise him after the game. Monday night "Chuck" got 20 points against U. B. C. Some cake.

Before the game What do rival coaches say before a game?

John H: "Hello, Don"

Don Lindy: "Hi, John. Heard about you."

John H: "Thanks."

Don: "Any hurry. Sorry I'm late."

John H: "No, I've got some sprained ankles. Still taping."

That's all.

In all kinds of weather

Dick Lewis, Chuck Musto, and Wayne Mann, Logger track men, were seen out tearing up the frozen cinders, prepping for the coming track season. Both High-jumper Mann and Hurdler Lewis have been spoken of as possibilities for the 1948 Olympic team.

Lost and found

Last Saturday night, Coach Don Lindeberg, in the leading car of the Whitman caravan became lost in an attempt to find the campus. Could be that signs should be erected so that the visiting teams could arrive prior to scheduled game time.

He said it and we're glad

The comments of different college presidents to their teams have been many and varied, but last week President Thompson said, "Come on, Loggers, Pour on the heat." Apple polisher Angeline, who was dribbling by, immediately obliged by swishing a long left-hander from the side of the court.

Women in sports

The "budding basketball bloomers" can start turning out each day of the week. Beverly Johnson, Barbara Prechek, Marie Switzer, Elenor Roundtree, Jackie Gibson, Phyllis Blaser, Jean Tippie, and Lois Fassett are eligible to take the examinations for officiating.

Never before

Bob "Stretch" Garrett, lanky center from Whitman is playing basketball for the first time in his sports career. "Stretch's" high school mentor told him that he was too clumsy to play, but Coach Lindeberg took his star

football end and first baseman and shaped him into a mighty fine center.

On his way

Bill Funk, who pitched for Hannibal, Missouri last year has taken a step up the ladder of success, is now making plans to go into spring training with Toledo of the American Association, a triple A league.

Around the loop

Pete Jonas, former Rainier pitcher, is to coach baseball at Pacific U. Roy "Sandy" Sandberg, former CPS coach has now taken up duties as assistant to Phil Sarboe at Wash. State. The "Johnson triplets of Willamette were good for 58 points against the College of Idaho last week.

Pacific U. has returned that football field that gave us much trouble last season

We Gotta Win

The Loggers left today for Caldwell to play a vital conference game tomorrow night with the much improved Coyotes. Let's hope the referees are on the ball. The Coyotes have yet to lose a home game this season or win on the road in conference play.

All School Ski Day Set For Paradise

Monday, Feb. 23, the student body of CPS will be found scattered around Paradise Valley in many varied positions. That is the day set for the "All College Ski Day" and has been declared a holiday.

The novices and schuss-boomers of the ski club will be up (?) trying to look their best.

The intramural ski races will be held in the afternoon. They are being handled by the Inter-collegiate Ski Team in cooperation with Dr. Bob Sprenger. Clint Gossard will be chairman for the day.

Arrangements are being made to take the school bus for those who have no other mode of transportation. The ski bulletin board in lower Jones hall will carry further details.

Visit the Record Den

See our Complete Line of Records and Supplies

THE RECORD DEN

609 No. Pine St. MA 7542

BOB CRONENDER, Prop.

FOR QUALITY AND WEAR HAVE YOUR SHOES REPAIRED AT

PROCTOR SHOE REPAIR

3817 1/2 North 26th

ALL WORK GUARANTEED

READY TO SERVE YOU

GET COMPLETE AUTO SERVICE AT

BIG SIX

FOR SUPER SERVICE

—in—

LUBRICATION — RADIATOR FLUSH

WASH JOB — BATTERY RECHARGE

ALL TYPES of ACCESSORIES

3826 6th Avenue PR 3541

Bevington's

XXX BARREL

Enjoy Our Car Service

FOR THAT FAMOUS TRIPLE X ROOT BEER and a CHAMPION HAMBURGER or a BAR-B-Q (PORK or BEEF)

927 Puyallup Ave.