



Yvonne Battin

# Debaters Win National Laurels

THREE CPS names were news at the Pi Kappa Delta national debate tournament in Bowling Green, Ohio, last week. Yvonne Battin, freshman, won top place in the women's oratory contest, Lloyd Gaddis placed second in convention stunts and Dr. Charles T. Battin was elected governor of the Pacific coast region, Pi Kappa Delta.

While some people collect stamps or guns, Yvonne seems to collect trophies. Daughter of Dr. Charles Battin, debate coach and head of the economics department, she has already captured three trophies in her CPS career. Last November she took the top spot trophy in oratory at the San Jose, California, Western Association of Teachers of Speech tournament. At the Linfield College meet in February, she captured her second first place cup. It was first place and another cup at the Tyro tournament held on the campus

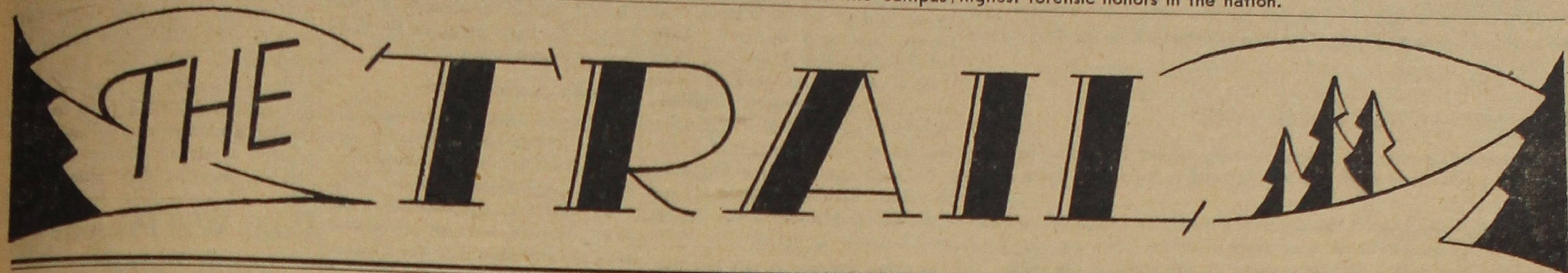
last month. By her latest victory, she wins Pi Kappa Delta special distinction in oratory.

Alpha Beta Upsilon recognized her as having the highest grade point of any of their pledges and Spurs, national sophomore women's honorary tapped her as a new member. At the recent student body elections she was elected to serve as sophomore representative.

Gaddis, who is a veteran of six years' naval service, a member of Alpha Chi Nu and the Intercollegiate Knights was one of 10 of 93 entrants to make the finals.

Dr. Battin is one of the founders of Pi Kappa Delta and holds key number eight and membership card number two of that organization.

Representatives from approximately 200 colleges competed for the highest forensic honors in the nation.



Thursday, April 17, 1947 COLLEGE OF PUGET SOUND, TACOMA, WASHINGTON 1947 - No. 22

## Hansen, Rough Schedule Busy Day for April 25

Every hour of Campus Day, April 25, has been planned to make it an unforgettable affair, according to co-chairmen Art Hansen and Peggy Rough.

Students will attend the first two periods Friday morning. After second period they will work on teams until noon to clean up the campus. Each of the fifteen teams will have co-captains and a colored flag. The teams will be posted on Monday, and every member of the student body will be on a team.

### Lunch in Cafeteria

Lunch will be served in the cafeteria for those who do not wish to bring their own.

An oldtime class competition between the freshmen and the sophomores to see which class can pull the other through the fire hose in the traditional tug of war will be led by the class president, under the chairmanship of Dick Eckert.

### Faculty vs. Student Game

Leo Butigan is in charge of the great student versus faculty baseball game to be held in the afternoon.

The evening program will be full of surprises, according to Chairman Dick Lewis, beginning with a free picnic dinner served by the Spurs on the campus in front of the SUB. There will be entertainment that

includes the Campus Workshop Band and a sock dance in the gym, sponsored by the Knights.

"Do not miss this big event," cautioned Peggy and Art. "There will be fun for all!"

### Publications Posts Open

The Board of Publications announces that petitions for editor or business manager of the Trail or the Tamanawas for next year are now being accepted.

Anyone wishing to apply for one of these four positions may turn in a letter containing his qualifications to any member of the board.

The board consists of the present editors and business managers of the two Associated Students publications and their advisers, Mrs. Margaret Whittlesey and Dr. Julius P. Jaeger.

## Freedom from Class Begins Week Earlier According to Dean

School will be dismissed a week earlier than was previously planned, according to Dean John Register.

Closed period will begin on May 9, with tests to be given May 12-23, the last day of classes being Friday, May 23rd, instead of the former date of May 30.

The change was made in order to consolidate graduation activities, making them all fall on the same weekend. The present schedule includes the president's reception for seniors in Anderson Hall on Friday night, May 23; sorority and fraternity alum banquets and the Senior Ball on Saturday; Baccalaureate on Sunday; and commencement exercises on Monday morning.

## Lynch to Head May Festival

Under the chairmanship of Lois Lynch, one of the most gala events of the school year, the May Day Festival, will be held on May 2. Highlighted by the crowning of the Queen of the May, the entire event will be held out-of-doors in the quadrangle in front of Jones Hall. High school girls from various schools in Washington have been invited to participate as Duchesses and attendants of the queen. The Loggerettes will also participate.

The Queen, Carolyn Cummings and Princesses Donna Mae Kiste and Inez Doherty Meyer, were recently selected by the student body vote in the ASCPS elections. Class representatives Joe Kirkebo, freshman; Beverly Johnson, sophomore; and Emily Harold, junior, were elected as Duchesses in the class elections.

Others on the May Day committee are Sheila Lamar, publicity; Pat Robinson, receiving the high school Duchesses; Donna MacInnes, programs; Doris Mitchell, entertainment; Ketrui Kahn, staging; Marion Sandal, professional; and Lois Vick, tea for the queen and her attendants.

### 'DIME DANCE' AFTER PLAY

All students are invited to attend the Dime Dance sponsored by the senior class in the SUB, Friday evening after the play. Dress will be informal. Come with a date or without, but come. Remember, only 10 cents a person.

## 'A Young Man's Fancy...'



Jack Grestorex (Dale Nelson) makes fancy speeches to his lady love, Elspeth Tyrell (Gretchen Swayze), in a rehearsal of this year's spring play, "Road to Yesterday."

## Playcrafters Travel 'Road To Yesterday' in Spring Play

How about a trek to the past? You won't want to miss the four-act spring play, "Road to Yesterday," presented by the Campus Playcrafters of the College of Puget Sound on April 18 and 19, at 8:15 p. m., in Jones Hall auditorium.

Each year "Teach"—Miss Martha Jones to you newcomers—searches for a play that will either aid or compete with spring when a "young man's fancy lightly turns to thoughts of love."

### Accent on Love

This year's play is a love story with two settings—one on a Midsummer's Eve in 1947 and one back to a Midsummer's Eve in 1603. Characters introduced in one act appear in the next act in the guise of previous incarnations. This is done via a wish made on Midsummer's Eve. Legend has it that a wish made on this eventful English quarter day, June 24th, will come true and remain true until it is unwished on another Midsummer's Eve. From such a situation created by Midsummer madness, what less can you expect than an emotional extravaganza?

Elizabeth Tyrell and Jack Grestorex, love interests, are played by

Gretchen Swayze and Dale Nelson. Bonny Steele as Eleanor Leveson and Norman Willard as Kenelm Paulton also exchange amorous feelings.

### Cast of Characters

Other characters are Irvin Miller, Will Leveson; Donald Miller, Adrian Tompkins; Sheila Lamar, Malena Leveson; Irene Fearn, Harriet Phelps; Barbara Rowe, Norah Gillaw; Aleatha Dietrick, Dolly Foulis; Frank Peterson, Hubert; Bruce Rector, Wat; Bill Gianelli, Sir oJhn. Doris Helen Smith will be the organist.

### Production Staff

The production staff includes Robert Lyon, student dramatic manager; Donald Crabs, set designer; Edward La Chapelle, lighting committee; Ruthella Raver, book holder; Irene Fearn, posters; Jaunita

(Continued on Page 2)

## Emphasis Week Will Follow Personal Philosophy Theme

Following the theme, "Is Your Philosophy of Life Adequate?" religious emphasis week will be observed on the CPS campus next week, April 21-25.

Dr. James Chubb, who is known as a leader in religious emphasis weeks in colleges and universities throughout the country will speak in chapel three days. Dr. Chubb was a former instructor in sociology at Baker University and now gives special attention to personal religion and social application of the Christian religion.

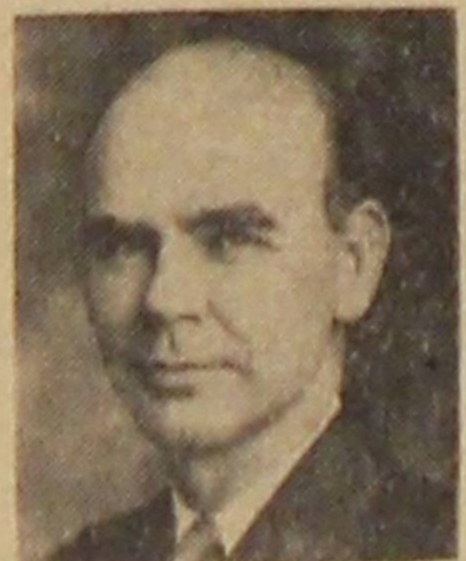
At 7 o'clock, Wednesday evening on KTBI, four students with different philosophies will appear on a forum. Those students will be Bob Tollefson, Rex Adkins, Troy Strong and Bob Huston.

The movie, "King of Kings," which was produced several years ago, by Cecil DeMille will be shown during the week. Thursday chapel will feature another movie, "The Ungrateful Servant."

Since music has often been used as an expression of philosophy and religion, the committee felt that it

is only fitting that the Adelpian Choir's home concert on Thursday night in Jones Hall should climax the week.

Wednesday night, the sororities, fraternities and Independents will meet with Dr. Chubb in Anderson Hall lounge. Delta Alpha Gamma will have Rev. Carl Johnson of the First Christian Church; Alpha Beta Upsilon, Rev. George Poor of Trinity Methodist, Seattle; Lambda Sigma Chi, Rev. William Callahan, St. Paul's Methodist, Seattle, Kappa Sigma Theta, Rev. J. Henry Ernst, Mason Methodist; Sigma Zeta Epsilon, Rabbi Bernard Rosenberg, Temple Beth Israel; Delta Pi Omicron, Rev. Walter Macoskey, First Baptist; Sigma Mu Chi, Rev. Loyal Vickers, Tacoma Council of Churches and Delta Kappa Phi, Rev. Milton Marcy of First Methodist.



Dr. James S. Chubb

Donal  
will  
ng the  
d no de  
obable  
ndeberg  
nderson  
enter;  
Hobbs,  
Lindebe  
roving  
will sl  
previo  
think  
cket."  
nitman  
confer  
and th  
y have  
four g  
d-fough  
  
O D  
By  
ysic  
lieved  
an ov  
damage  
search  
toward  
Dama  
at \$30  
  
start  
burne  
i. It is  
lack  
iting  
classes  
some  
e th  
y ho  
bottl  
Plast  
table  
set fe  
  
import  
accord  
Seward  
departm  
es. An  
physics  
helping  
l. Two  
ere dan  
An osc  
nt for  
iges in  
  
MOVIES  
ly movie  
rents hav  
ill be hel  
at 7:30  
uditorium  
wo hours  
national, c  
value. Th  
series.  
5 short  
will be  
in Jones  
  
'rospe  
Trip  
ring, Dr  
least a  
Sound  
's recen  
members  
n, and to  
America  
Method  
  
an excepti  
Dr. Thom  
  
he said."  
nd all the  
and product  
school year."  
Dr. Thompson  
trip, although suc



## Hail the Victors!

The conquering heroes come home today in a '36 Nash driven by an enthusiastic professor of economics.

They are returning with national laurels. They have put CPS on the map.

Our forensics department is one of the few activities in which we have ever gained nation wide recognition.

We wish to express our appreciation to the squad and their coach for the honor they have brought to the College of Puget Sound.

We extend our warmest welcome home to our victorious friends.

There is one more point for which we are grateful: We are glad we won't have to squeeze into our Easter bonnets for another year, because we figure it will take that long before we'll be back to normal.

## Come and Get 'em

A despairing plea for mercy recently issued from the harassed members of the Trail staff and was printed in bold face type in the Trail.

As usual, nobody paid the slightest attention to their fervent outcries and they were obliged to continue shouting, "No, you don't get them here!" every time someone came up the stairs in the SUB.

Even granite can be worn away by a persistent trickle of water. Who are we to resist the perpetual stream of clamoring humanity?

Yes, we surrendered. You can get them here now. Come and get your 1947 Log Book in the Publications Office before the year 1947 is over.

## Sounding Off

By Chuck Gruenwald

### What Is A Good Citizen?

It has taken thousands of years, hundreds of wars, and an atomic bomb to answer Cain's question, "Am I my brother's keeper?" We have thought of a good citizen as one who works hard, saves his money, is well-liked, loves his family and his country, and who perhaps is a good church worker. But now we know that to these qualities must be added one other. Today's good citizen must also have a universal interest in mankind and must pledge his allegiance to the world even more than to his nation. He must say, "Truly I am my brother's keeper." Then, in seeing a man who is vitally interested, not only in himself, his family, his friends, and his country, but in the welfare of all peoples, we have defined a good citizen.

★ Seasoned Timber . . .

## Young Captures Limelight With WAA, SCA, OT Club

Stepping into the limelight for this week's "senior spot," is ambitious and capable Bea Young. Majoring in biology for Occupational Therapy and choosing psychology and rehabilitation for her minors, this active Indie finds time for WAA, SCA, O.T. Club and Kappa Phi.

She has earned her sweater in girls' athletics while playing on the all-star basketball team two years.

Last year Bea was president of SCA, while this year she was WSSF chairman and is president of the O.T. Club. She is among those chosen for Who's Who, a member of the senior women's honorary, Otlah, and Mu Sigma Delta.

Occupational Therapy includes about everything in the way of crafts for her hobbies, and she loves picnics and camping. Also among her many likes she mentioned the "senior sneak." Her only dislike is being in class on a beautiful day.

After Bea graduates she has ten months of clinical training in hospitals. She has taken three months of psychiatry at Morning Side Hospital in Portland. In July, two months will be spent in Vancouver, B. C., for orthopedics at the Workmen's Compensation Workshop.

Her ambition, after graduating from CPS and passing the O.T. national examination next February, is to get a car and have some time to do anything she wants.

## Off Beat BY THE EM CEE

How did you like the Campus Radio Theater broadcast last week? Would you like to hear more like it? Why not mention your interest to John O'Connor, who, if he ever finds himself sick in bed again, is willing to write another show. Who wouldn't, with such good cooperation of everyone and such satisfactory results as were exhibited Wednesday? Just to look at the band in its white sweaters, flanked by the microphone, with a banner across the back of the stage was a thrill! For those of you who were late to chapel that day, there really was a banner for the show.

The Adelphian banquet at Crawford's last Friday was so full of laughter and corn that the home concert on Thursday, April 24, cannot help being tops in serious entertainment. As of Friday night, Dick Simpson is moustache-less, Joan Storhow is watching for creeping green bugs, Prof. Keutzer is looking before he sits, and Mrs. Cheney is cultivating a variety of wild roses. Stupendous plans for next year's tour were announced at the dinner, and the director and adviser were presented with gifts in appreciation of their good sportsmanship and their ability to put up with 35 rowdies.

## Society Takes New Members

Two faculty members, five seniors and seven juniors have been elected to Mu Sigma Delta, CPS honorary organization which is comparable to Phi Beta Kappa, according to Miss Frances Chubb, secretary of the group.

Dr. Robert Springer and Dr. Gordon Alcorn, of the chemistry and biology departments, are the two faculty members to join the group.

Seniors are Lucille Randall, Beatrice Young, Louise Kipper, Lois Lynch and Inez Doherty Meyer, who, with Janice Lindeman, Betty Jane Cappa and Jing Ho Ling (present members), comprise approximately 10 per cent of the graduating senior class.

Juniors are Jeanne Mickens, Marshall Campbell, Merle Legg, Sara Jeane Mather, Sheila Lamar and Kathryn Hultgren.

A grade average of not less than 2.25 for seniors and 2.5 for juniors, plus good moral character are the qualifications for Mu Sigma Delta. New members are initiated in May. There are 25 members in the present group of which Dr. P. R. Fehlandt is president; Dr. Helen Fossum, vice president; and Betty Jane Cappa, corresponding secretary.

## Stripes (No Stars) Ripple In Breeze On Jones Flag Pole

A blue-and-white striped flag whipped jauntily in the breeze from the flag pole atop Jones Hall last Monday afternoon.

Only one member of the student body was unhappy as he surveyed the waving ensign. Dashing up to the fourth floor only to find the door to the tower locked, he returned to the office of Miss Frances Chubb, art instructor, and pleaded for her key to the door.

Before she yielded the key, however, he was obliged to explain to her that he really needed it for a legitimate purpose.

Yes, Howard Hitchcock, freshman class president, would probably be sleeping a little chilly these nights if he hadn't been able to retrieve his pajamas from their lofty post.

### WATCH FOR . . .

- April 18-19—All-College Play
- April 19—Kappa Phi Cruise
- April 21-24—Religious Life Emphasis Week
- April 24—Adelphian Concert
- April 25—Campus Day

## 72 Surplus Filing Cabinets Received

How do you like the return to the wide open spaces? The filing cabinets that filled every niche and cranny in lower Jones Hall and caused so much comment and student curiosity have vanished. There were 72 of these cabinets in all that were obtained from the War Asset Administration in Seattle.

The cabinets have been distributed about the college as they were needed. Five went to the library and five to Dr. Edward H. Todd; others are being used by the music department, book store, placement bureau, Coach Frank W. Patrick, Prof. Frederick A. McMillan, Prof. Raymond S. Seward, museum, Prof. Martha Pearl Jones and innumerable other offices and individuals at CPS.

### Loggers, Lutes Skate

The Lakewood Ice Arena was chosen by Bob Church and Harry Caren for a joint Ski Club meeting with PLC Tuesday, April 15.

## Introducing CPS Benefactors Grace Kittredge, C. H. Jones

By MARY JACKSON

Recently you met the people whose names you see above the entrances to Anderson Hall and Howarth Hall. There are two other families who generosity has played an important part in the development of our campus.

Grace Kittredge accumulated considerable property during the years she lived in Tacoma. In the late 1920's she moved to Vancouver, but she maintained the interest she had shown for some years in the College of Puget Sound.

### Kittredge Leaves Estate

When she died, her will provided that all of her estate, except a certain amount to help a niece and nephew through school, was left to CPS, with the stipulation that the funds were to be kept untouched until the principal plus the interest reached approximately the sum of \$20,000. When that amount was on hand, it was to be used for the erection of a building.

In 1940 that sum was reached, and since there was great need for a social center for the students, the money was applied toward the Student Union Building. Miss Kittredge had suggested that she would appreciate knowing that the building would be named for her father, so we have John M. Kittredge Hall—the SUB.

### C. H. Jones Was Lumberman

C. H. Jones was a prominent citizen of Tacoma who achieved financial success as a lumberman in western Washington. He was always a friend and staunch supporter of the College of Puget Sound. After his death in the fall of 1922, Mrs. Jones, who shared her husband's concern for the future of CPS, carried on in his place to provide much financial help for the college.

The General Education Board of the Rockefeller Foundation had challenged the college to raise a quarter of a million dollars for anticipated buildings. Mrs. Jones contributed \$50,000 to the campaign which was underway at the time of her husband's death.

### Lecture Proceeds To Start Scholarship At College

A lecture on flower arranging, the proceeds of which will go toward establishing a scholarship at the College of Puget Sound, will be given by Mrs. Thomas Balmer of Seattle, at Wells Hall, North 2nd and Kay, this afternoon at 2 o'clock.

The program is sponsored by the Tacoma alumnae of the Kappa Kappa Gamma sorority and tickets may be secured from any member of this group or at the door. The

Later on, when plans were made for the erection of an administrative building will be followed by a tea. tion building, Mrs. Jones gave \$180,000 for the building which was to be named in honor of her husband. The commencement exercises in 1924 were held in the new building, which was completed that summer and dedicated to the memory of C. H. Jones "Soldier of the Civil War, Lumberman, and Friend of the College," as you may have read on the plaque just inside the entrance to Jones Hall.

The generosity of these people, and their unbounded faith in succeeding generations of college youth present a stirring challenge to us who are enjoying their gifts.

## Profs Will Present 'Curtain Raiser'

"To be or not to be, professor?" The faculty has gone dramatic.

One of the unusual features of the evening of the spring play will be the curtain raiser put on by our own faculty. Every four years faculty members have combined their dramatic talents and efforts to produce their own comedy or melodrama.

This year's frivolous faculty farce, "If Men Played Cards as Women Do," will star four of our prominent faculty members. The fun of this comedy begins when the men at the bridge table speak, behave, and think in the same manner as women do in conducting their bridge parties.

The faculty members taking part are John Register, Robert Springer, Clyde Keutzer and Frederick McMillan.

## Kappa Phi To Take Cruise On Saturday

Ship, Ahoy, Kappa Phi girls! All hands on deck for the annual Kappa Phi cruise Saturday, April 19, on the Gallant Lady. The boat will leave the Old Tacoma Boat Mart at 9 a. m. sharp and will return between 5 and 5:30 p. m.

A course has been charted that will include a stop for a picnic on the beach. Information is posted in lower Jones Hall and Anderson Hall.

## Playcrafters

(Continued from page 1)

Baumgartner, make-up; Luba Ostofichuk, make-up assistant. The Spurs will act as ushers.

Tickets will be sold at the door: adults, 50c; students, 25c. However, CPS students have only to present their student body cards.

## The Puget Sound Trail

Established September 25, 1922

Published weekly During School Year

Official Publication of The Associated Students College of Puget Sound

Entered as second class matter at the Post Office in Tacoma, Washington, under the Act of Congress of March 3, 1879.

Subscription price 75 cents per semester; \$1.00 per school year by mail.

Member

Associated Collegiate Press

EDITOR	LOIS PHILLIPS
ASSISTANT EDITOR	DAVE PARKER
BUSINESS MANAGER	EMMA NELSON
Sports Editor	Leo Butigan
Society Editor	Donna June Bennett
Feature Editor	Mary Jackson
Reporters—	Ruth Behrens, Barbara Breazeale, Marshall Campbell, Beth Davies, Leonard Docherty, Jack Erck, Neva Iverson, Diane Jensen, James Johnson, Mary Jean Kean, Mary Kincheloe, Nadine Kensler, Lyle Lindellen, Joe Manley, Marcella Morton, Bill O'Connell, Peggy Rough, Doris Rutherford, Marjorie Smovir, Mal Stevens, Frances Swenson, Don Thornhill, Harriet Warne, Bob Winskill, Coral Venske, Larry Beck, Ward Sims.
Ad Solicitors	John Lane, Dick Brouillard, Ruth Potter
Circulation Managers	Lois Vick, Vernetta Harville
Faculty Adviser	Margaret F. Whittlesey



# Timberlines...

By LEO BUTIGAN

WHAT HAPPENED DOWN OREGON WAY—The freak play of the year took place in the first game of the CPS-PACIFIC series last Saturday. Here's what happened—Vic Martineau was on the mound—it was the 8th inning—two men were on base—nobody out—the batter knocks a line drive at Vic—the ball deflected off his palm into the hands of Crooks, the Logger shotstop, who in turn fired the horsehide to Birmell, the second sacker—for a double play. This will do until we hear of a more freakish one. After dropping those two tilts to Seattle College our team played turnabout, looking mighty sharp against the Badgers—FRANK OSBORN has proved to be a very reliable chucker indeed, while VIC MARTINEAU should get better as the season progresses. Still could use another pitcher or two. **HIGHLIGHTS OF SATURDAY'S TRACK MEET**—There is only one real highlight to report—the fact that a spectator was placed on the casualty list, hit by a flying discus. Incidentally, a non-participant of the meet threw the discus. This would have never happened if the school had taken proper methods of handling the large crowd in attendance—we hope that THIS Saturday, spectators will be confined to the stands.

**CHIPS OF CHATTER ACROSS THE PLATTER**—Stand by for big developments on the Athletic Trophy to be presented next month (remember?) . . . The student-faculty softball game scheduled for Campus Day should be a lulu—lots of surprises in store for everyone.

The baseball nine received a double jolt prior to the Pacific game—HARRY MANSFIELD, star first sacker, was declared ineligible, temporarily at least, and BOBBY ANGELINE, fleet outfielder, gave up the national pastime to devote more time to studies.

## Netmen Outswat Pacific In Meet

Proving their prowess as singles and doubles champions, the CPS netmen outswatted the Pacific University tennis team, 6 to 1, at Forest Grove, Oregon, last Friday, April 13.

Harold Mosich and Jack Buescher defeated their opponents without losing a set. Cavanaugh and Hesselwood, first doubles partners, and Mosich and Mosich, second doubles men swung through their duo sets also without dropping one.

Summary of the matches: Cavanaugh (CPS) defeated Shaw (P), 4-6, 6-4, 6-1; Hesselwood (CPS) won over Neilsen (P), 6-3, 2-6, 8-6;

**C.P.S. Sports**  
EDITED BY LEO BUTIGAN

## CPS Cindermen Show Power in Opening Meet

By BILL STONER

Although Bob Harmon, St. Martin's freshman, was top point-getter in Saturday's quadrangular meet, the College of Puget Sound Loggers opened the 1947 track season with a win as they piled up 58 2/3 points as compared with 44 1/3 for Pacific Lutheran College and 41 for St. Martin's. Fourth place went to Seattle College, who totaled 19 points.

Puget Sound won five first places and two-thirds of a three-way tie for a sixth, the high jump, while St. Martin's copped five firsts and Pacific Lutheran had four winners, plus the other one-third of the high jump.

Harmon piled up 11 1/2 points, winning both the 440 and 880-yard runs and anchored the winning mile relay team.

### Summary:

- Shot put—Sturm (CPS), Nehl (SM), Gunderson (SC), Hansen (SC). Distance: 39 ft.
- Mile run—Mills (SM), Falconer (CPS), Goebel (SC), Grunke (SC). Time: 4:57.
- Pole vault—Tomchick (CPS), Iufer (PLC), Gamm (PLC), Larson (SC). Height: 11 ft.
- 440—Harmon (SM), Lewis (CPS), Gilsdorf (CPS), Gamm (PLC). Time: 1:33.3.
- 100-yard dash—Nehl (SM), Cook (PLC), Light (CPS), Small (SC). Time: 1:02.
- High jump—Danielson (CPS) Mann (CPS), and McLaughlin (PLC), tied for first, Swenson (CPS). 6 ft.
- 120-yard high hurdles—Lewis (CPS), Larson (PLC), Ford (SM), Gunderson (SC). Time: 1:16.2.
- 880—Harmon (SM), Huffman (PLC), Nelson (CPS), Loper (PLC). Time: 2:09.
- 220-yard dash—Schafer (PLC), Light (CPS), Nehl (SM), McBride (SC). 2:33.
- Broad jump—Nylander (PLC) Carrier (SM), Briggs (CPS), Hoskins (PLC). 20 feet, 6 inches.
- Two mile—C. Nelson (CPS), Grunke (SC), Hamphill (SM), Perdue (CPS). 12:04.
- Discus—L. Nelson (CPS), Helsby (SM), Hansen (SC), McLaughlin (PLC). 121 ft.
- 220-yard low hurdles—Hoskins (PLC), Briggs (CPS), Ford (SM). 28.
- Javelin—McLaughlin (PLC), Gunderson (SC), Rice (CPS), Sturm (CPS). 159 feet, 4 inches.
- Mile relay—St. Martin's (Barry, W. Nelson, Mills, Harmon), Pacific Lutheran, Puget Sound, Seattle College.

Dudley (P) downed Harvey Mosich (CPS), 1-6, 7-5, 6-4; Harold Mosich (CPS) overpowered Clark (P), 6-2, 6-4; Buescher (CPS) defeated Meredith (P), 6-4, 6-2; Cavanaugh and Hesselwood (CPS) combined to win over Clark and Neilsen, 6-0, 6-1; Mosich and Mosich (CPS) smashed out a 7-5, 6-3 victory over Shaw and Dudley of Pacific.

## Undeclared Golfers To Meet Huskies

The crack CPS golf team will take to the links again when they engage in a match with the strong University of Washington team from Seattle.

Expecting one of their toughest matches of the year from the Huskies, the Loggers have been working

## Keeping abreast with other victorious CPS teams over the weekend, the Logger golfers took on the role of giant killers and completely outplayed a WSC pick-up squad, knocking them over 10 1/2-7 1/2 on the Fircrest course.

daily in an effort to present a well-oiled squad against the favored Huskies.

To date the Loggers have failed to lose one match. They walloped Pacific U. on their own course to the tune of 18-0. A week later they trampled over Portland U., 11 1/2-6 1/2. Other teams to fall before our divot diggers were UBC and Willamette.

Composing the CPS squad are Lew Staples, city amateur champion; Les Stephens and Fred Campbell, erstwhile Allenmore aces; Jack Wilson, former Stadium high star; Ernie Althuser, low handicap man at Meadow Park; and Dick Nicholson, promising star from Stadium.

## Logger Nine Is Fine; Take Two at Pacific

By BILL SCHEYER

Baseball, missing since the spring of 1937 from the CPS campus has come back again under the scrutinizing eye of Coach Frank Patrick.

The 1947 Logger nine, getting the jump on the other members of the Northwest Conference, invaded Seattle on March 28, only to drop both ends of a doubleheader to Seattle College, 5 to 3, and 13 to 6.

### Osborne, Martineau Lead

Last week, April 12, the Loggers lead by ace twirlers Frank Osborne, strikeout king of Meridian during his prep day and Vic Martineau, former Bellarmine high chucker and a member of the Lumbermen of the Western Washington League, bounced back to sweep both ends of a doubleheader from Pacific University at Forest Grove, 7 to 2 and 3 to 1.

### Birmell Stars at Plate

Showing a complete reversal of their Seattle disaster, the Loggers looked very impressive; playing almost flawless ball in the field and led by Earl Birmell who gathered a homer, a triple, and a single in four times at bat, showing lots of power at the plate.

The twirlers were very ably supported by backstop men Bus Mitchell and LaVerne Martineau.

The remainder of the Logger nine looks something like this: Harry Mansfield and Roy Loper are just about even up at first; Bill Stivers and Earl Birmell are battling for the second base berth. Ed Crooks and Louie Wohlman are the leading candidates for shortstop and Ed Bemis is handling third base.

Dick Salatino, Bob Angeline and Hollister Gee loom as regular outfield trio, with Bill O'Connell and Warren Woods as the leading spares.



Portable Radios  
AC & DC  
Philco Car Radios  
Fits Any Auto  
**OHISERS**  
3802 No. 26th 3023 6th Ave.

## Softball To Start Monday

Intramural Director Bill Madden announced today that softball will start next Monday. All fraternities and the independent teams should draw their softball equipment at the gym this week.

Order Your  
**PERSONAL CARDS AND STATIONERY NOW**  
at  
**ALLSTRUM PRINTING COMPANY**  
714 Pacific Avenue Main 6768

### BASEBALL SCHEDULE

- April 28—Western Washington, here.
- May 3—Lewis and Clark, here. (doubleheader)
- May 7—Western Washington, there.
- May 12—Pacific Lutheran, here. (doubleheader)
- May 17—Willamette, here. (doubleheader)
- May 22, 23, 24—Northwest Conference Playoffs.

## BOWLING

Soda Fountain Game Room  
Lunch Counter

UNITED CHURCHES  
YOUTH CENTER  
Ninth & Pacific

HAMBURGERS  
REFRESHMENTS

at  
PAT'S  
FOUNTAIN  
SERVICE

2710 North 21st

### Visit Our SKI SHOP!

WASHINGTON HARDWARE  
SPORTS SHOP  
918-20 Pacific

## PETERSON

**BROTHERS, INC.**  
Hay, Grain, Feeds, Garden and Poultry Supplies  
Dutch Boy Paint and Kemtone

1002-1004 South K St.  
Phone: MAin 0331

EVERYONE MEETS AT . . .

## Bill Busch's Drive-In

3505 South Tacoma Way

For Those

Thick Malts—Soft Ice Cream—Deluxe Hamburgers—and "Believe It or Not"—(Fresh Strawberry Shortcake Topped With Soft Ice Cream, .30c)

## Tune In On Wednesday Nights for your own

# CAMPUS RADIO THEATRE

Featuring talent from Tacoma High Schools and Colleges

### SCHEDULE OF COMING PROGRAMS

- April 16—Pacific Lutheran College
- April 23—Clover Park High School
- April 30—St. Leo's High School

TUNE IN  
**KMO**

8:30 P. M. Wednesdays

REBROADCAST ON KTBI  
9:30 P. M. THURSDAYS

Sponsored by

## TACOMA CITY LIGHT



### Shirley Gibbs Weds In Spring Vacation

The wedding of Shirley Gibbs, CPS senior, and William Hunter was solemnized Wednesday, April 2, in the Tahoma Terrace United Presbyterian church in Tacoma.

A number of present and former CPS students took part in the wedding. Cathryn Funke was a bridesmaid and Elouise Cruver and Dorothy Martin were candlelighters. The members of last year's Campus Trio, Mary Jean Heindinger, Betty Heindinger Smith, and Virginia Kilde Lease, sang. Coral Venske was at the organ.

Shirley, the daughter of Mr. and Mrs. H. H. Gibbs, is pledge mother of Gammas. She was corresponding secretary of her sorority, and has belonged to Ski Club and WAA. She is majoring in home economics. Bill is the son of Mr. and Mrs. William Hunter.

#### Interested In Latin?

If enough students are interested, a course in Latin will be given next year. Latin is suggested for pre-law, pre-med and language students. Those interested should leave their name and previous Latin taken, if any, with Mrs. Boulton, the Dean's secretary.

#### Mu Chis Dance Saturday

Alumni of Sigma Mu Chi will entertain members of the active chapter with a semi-formal dance on Saturday evening in the Student Union Building. The dance, one of several affairs celebrating the 25th anniversary of the group's founding at CPS, was planned by Dick Haley, alum president, and members of his executive committee.

The annual spring formal put on by active members will follow on next Saturday, April 26, at the New Yorker ballroom.

The Ski Club Trophy will be given away at awards chapel the 28th of April. It will be awarded to the Independents by the president of the Ski Club.

Open until 2 A. M.  
except  
Sunday and Tuesday Open  
until 8 P. M.

## KOZY CAFE

3812 No. 26th PR. 3355

### MONTY'S CAFE

606 South Kay

The place to MEET friends  
The good place to EAT  
Open Any Hour of the Day or Night

### PROCTOR THEATRE

2611 No. Proctor PR. 5461

Ends Tonight, Thursday  
"THE TIME, THE PLACE & THE GIRL"

Fri. & Sat., April 18-19  
Robt. Young, Barbara Halein  
"LADY LUCK"  
Plus Jack Benny & Rochester  
"Meanest Man In the World"

Sun. & Mon., April 20-21  
Dorothy McGuire, Guy Madison  
"TILL THE END OF TIME"  
Also Top Musical Hit  
"DING DONG WILLIAMS"

Tues., Wed., Thur., Apr. 22-23-24  
John Garfield, Geraldine Fitzgerald  
"NOBODY LIVES FOREVER"  
Sport Parade—Late News

## Gym Shorts

By RUTH ANN POTTER

### BOWLING

Saturday afternoon the center of interest for all the WAA members was the United Youth Center at 9th and Pacific. Gammas won first place with 1,198 points, Lambdas second with 968, and Betas third with 964. There were 47 girls participating from the sororities and Indies. The highest score made was 156 by Marion Sandal, a Gamma. Dorothy Kostenbader was in charge.

All the girls who played tennis last fall should be sure to give their games and scores to Elouise Cruver, manager. Tennis balls and racquets can be obtained from Mrs. Johnson any time. The courts have been all done over and with this nice weather it would be a good time to play.

Two other individual sports scheduled for this spring are archery, Betty Jane Cappa, manager; and horseshoes, Janice Lindeman, manager. Equipment for the sports is available at the gym any period.

The WAA banquet will be May 6 at the SUB. There will be slips to sign up on if you plan to attend and if you sign up be sure to come or take your name off. There will be more announcements about it later.

#### Two Pledge Delta Kaps

Delta Kappa Phi's short business meeting of April 9 was followed by the acceptance of Bill Stivers and Dick Carter into the ranks of DK pledges.

The meeting was topped off with an hour of interesting sport movies which were obtained for the fraternity by Don Burnett and Bill Chalk and shown by Pat Pratt.

#### Student Tours to Mexico



### ADVENTURE • EDUCATIONAL Seven Weeks Made to Order SOUTH OF THE BORDER

Once again colorful, romantic Old Mexico is calling you. This summer take advantage of the first opportunity since the war to meet your Mexican neighbors. Spend 7 exciting, educational weeks behind the scenes below the Border. Study the customs and the language of a truly foreign country. See for yourself the multitude of historic landmarks in the land of the Aztecs. Enjoy the cosmopolitan atmosphere of mile-high Mexico City.

Here is a complete all-expense tour, including 5 thrilling weekend trips to Volcano, Fortin de las Flores, Taxco, etc. If you desire you may attend summer school at National University in Mexico City. Veterans may receive up to \$200 while attending. By special arrangement modern hotel apartments in picturesque settings are available for housekeeping. Costs have been held to a minimum to meet the modest budget. Tour commences June 28, return August 18.

Students, teachers, and alumni are urged to investigate this opportunity. Write today for complete details. The doors of Old Mexico are opened to you.

### Scenery Unlimited Tours

105 BERKELEY SQUARE, BERKELEY 4, CALIF.

OR SEE YOUR TRAVEL AGENT

Round Trip from Tacoma  
By Air \$616.43 (including tax)  
By Bus \$433.98 (including tax)

### Twelve Initiated In Omicron Rites

The Doric Room of the Masonic Temple was the scene of formal initiation rites for twelve Delta Pi Omicron pledges March 25, Clarence Schorer, fraternity president, disclosed this week.

Pledges initiated were Robert Assmussen, Carl Blaskowsky, Dave Frame, George Fairfax, Laurence Gadbois, Charles Howard, Al Javorski, Sidney Justice, Roy Loper, Daniel Seymour, Curtis Votaw and Warren White.

Mr. Wallace Drake, first president of the fraternity, who is now teaching at Lincoln high school, presided at the colorful ceremony. Also officiating were Jack Enright, Marc Miller and Ben Knoel, all alumnae.

After the rites, members and alumnae present were addressed by Dr. Lyle S. Shelmedine, fraternity adviser, and Patrick M. Steele, alum and Pierce county prosecuting attorney. Everyone then adjourned to the fraternity house at 1516 North Oakes for refreshments and a get-together with the new pledges.

### Rutherford, McCort Reveal Engagement

Doris Rutherford surprised the members of Lambda Sigma Chi last Friday night by announcing her engagement to Donald D. McCort. The event at which she chose to reveal it was the Lambda Sigma Chi 25th Anniversary Ball at the Winthrop Hotel. The members and their escorts learned of the engagement when Evelyn Coubrough, president, was requested to call at the desk for the traditional box of chocolates. The names of the couple were revealed on a white and gold scroll.

### Fulton's Bakery

2813 6th Avenue  
MAin 9722

### Letterman's Sweaters

Made to order

### QUALITY KNITTING

934 Commerce MA 6581

### Theta Prexy Tells Sorority of Troth

Highlighting the Kappa Sigma Theta sorority's Violet Luncheon was the announcement of the engagement of Alice Ann Cross to Chester Cole Bernard.

Alice Ann is president of her sorority, a member of Otlah, Spurs, WAA, Inter-Sorority Council, and Senior Representative to Central Board.

Barney, a graduate of a New York military academy, was a member of the ASTP program at the college in 1944. He studied at the University of Paris also and is now a student at Cornell University, where his major is hotel administration.

#### Gammas Hold Tea

Mothers and daughters of Delta Alpha Gamma were able to meet each other at a tea held Wednesday evening in the home of Mrs. DeVoto on North Yakima avenue, under the chairmanship of Jean Shiplett.

Committees working with Jean were: decorations, Peggy Weaver and Clare Thompson; food, Diane Jensen, Lorna Loucks and Betty Abrahamson; entertainment, Ruthella Raver.

A NICKEL still buys a lot of . . .  
**BUTTERSCOTCH FILBERT Ice Cream.**

Ask for the best at your Commons Luncheon

Ask For . . .



### Clapp-Gustafson Wed In Grand Forks, B. C.

A wedding ceremony solemnized in Grand Forks, B. C., united Gloria Clapp, daughter of Mr. and Mrs. A. C. Clapp, and Frank Gustafson, son of Mrs. Franklin E. Gustafson and the late Mr. Gustafson. The ceremony was performed March 30 and two hundred friends and relatives were present.

For their honeymoon the newly married couple went to Victoria, and they are now residing in Tacoma. Both attended CPS last year and Frank was in the medical corps and served in the European theater.

Monday night a number of the girls who had lived in the basement of Anderson Hall last year with Gloria honored her with a dinner and shower at Knapp's restaurant. Those present were Beverly Johnson, Barbara Lindahl, Jean Muncey, Ruth Lubbe, Eleanor Roundtree, Junita Christiansen, Marian Newman, Doris Rutherford and Harriett Warne.

Phone MAin 0524  
**RANKOS**  
PHARMACY  
Dependable Prescriptions  
101 No. Tacoma Ave.

For Quality and Wear on the Campus Have Your Shoes Repaired at

**Proctor Shoe Repair**  
3817½ North 26th

All Work Guaranteed

### LaPore's College Food Store

and  
**Blythe's Meat Market**  
3118 North 21st Street

### Bevington's

## XXX BARREL

For that Famous TRIPLE X ROOT BEER

And a Champion Hamburger or a Bar-B-Q (Pork and Beef)

924 Puyallup Avenue

## Hospitality in your hands



Serve  
**Coca-Cola**  
at home

BOTTLED UNDER AUTHORITY OF THE COCA-COLA COMPANY BY

THE COCA-COLA BOTTLING COMPANY — TACOMA

5¢

© 1947 The C.C. Co.