

Do You Believe in Christmas?

(Continued from page 1)

"The Star of the East" sometimes seems to be lost in the incomprehensible brilliance of a star 10,000 times the size of our sun. We use our "faith" as blinders to shut out the shocking glare of scientific discoveries which overwhelm our imaginations and cause us to feel uncomfortably small and insignificant. To some of us the word "religion" stands for an escape from the bewildering and often humbling process of establishing to our own satisfaction just where and what our importance as individuals may be.

In the fourth group there are those wise and happy few who have a creed to live by and the resulting optimism which enables them to face all situations—defeat or victory—courageously and triumphantly.

Those who belong to this group have been disillusioned and not become cynics; they have been confused and frightened and have not become lost; they have been tempted with hypocrisy and have not yielded.

They know that humility and selflessness are the true keys to happiness and regardless of their denomination or specific beliefs, they do have faith in something infinitely greater than themselves and they readily admit that many things are not understood by man.

They rejoice in the Christmas story as the symbol of these unseen things and they sing "Joy to the World" with enthusiasm and sincerity.

They earnestly try to follow the example set by the Child who was born "Away in a Manger."

Off Beat BY THE EM CEE

Something new in the way of music was heard this week when the band, the Men's Collegiate Singers, and the Women's Collegiate Singers, join forces to bring the student body Christmas music from the foyers of Jones and Howarth halls. This feat was performed yesterday and today, and came during one of the morning periods. The idea was to have the music echo through all the building, and the old favorites played and sung were guaranteed to be more aesthetic than the steam shovel that dug the basement of the dormitory now under construction.

What with *A Christmas Carol*, a Union Depot appearance, and the foyer concerts, the two glee clubs have been doing double duty this week. These organizations have fallen heir to some of the jobs the Adelpian Choir had last year, and in each case they have put on effective performances. They will be an integral part of the final scene in Dickens' "Carol" on Friday, after which "at ease" will be the order until January 6.

Sleuths Or Snoopers?

Several CPS students were recently observed going through the student mail boxes in lower Jones Hall and systematically reading all the notes in a box, replacing them, and going to the next box. Aside from the fact that this occupation is decidedly unethical, it would seem that persons of college calibre would use their time to better advantage.

★ Seasoned Timber . . .

Lois Lynch Likes Books, Cards, People

Lois Lynch is on the lookout for interesting people, good books, and a bridge foursome. She claims, however, to have an unfortunate flair for meeting bores, choosing the wrong book, and underbidding a bridge hand. This may be so, but a glance at the college career of this Tacoman with brown hair and chameleon eyes shows considerable success in the pursuit of those interests.

Her interest in people has kept Lois busy in student affairs ever since her freshman days. As a sophomore, she was elected to Spurs, and in her junior year Lois was even busier as vice president of Delta Alpha Gamma and as society and feature editor of "The Trail." In this, her senior year, Lois is president of her sorority, on the Inter-Sorority Council, senior representative to Central Board, and a member of Otlah, senior women's honorary.

As for books, Lois has had obvious success in choosing the rights ones to study. Last year she received the one hundred dollar scholarship in history, which is her major field. Minors for Lois are English composition and business administration.

Bridge is not her only out-of-school interest, for Lois also enjoys spending her leisure time making hats and collecting Chopin records, especially nocturnes. (Santa Claus, please note!) Lois has had one big thrill already this year—seeing her first CPS football game, and in her senior year, mind you; and she is eagerly anticipating the long-awaited thrill of graduation.

CPS Versions of Dave Rose Emerging from Music Class

By Mary Jean Kean

Sounding like a cross between a mathematics and a foreign language class to the uninitiated, the music arranging class is making Dave Roses out of CPS students. With comments like, "if you do that it will use another instrument and make more work for more musicians," the group is preparing arrangements for a concert to be held in the spring on May 2.

The eight members of the group are learning the hard way by doing the work involved in presenting one orchestration. Under the guidance of Leroy Ostransky, student instructor, the class is learning how to harmonize the various instruments so that no one is useless or over-emphasized.

Workshop Band Formed

Formed to assist the class is the Workshop Band. It is now under the leadership of Ostransky, but "when they get smoothed out" they will elect their own leader. Professor John O'Connor has been working with the brass section. The band will present the arrangements of the class in the May concert.

The members of the band are: saxophones: Dick Henderson, Gill Martin, Dan Franklin, Frank Dutra and Dean Christian; trumpets: Ralph Rowe, Iverson Cozart,

Holmes Hutton, and Paul Middlebrook; trombones: Ted Picard, Bob McNary, George Wilson, and Jim Hutson; drums: Bob Lind; marimba: Jay Ball; piano: Elizabeth Kennedy; bass: Vernon Robyn, and librarian, Dick Smith. One vocalist is Harmon Weston, while the female vocalist has not yet been chosen.

Working on Several Numbers

The students of the music arranging class and productions they are working on are: Frank Dutra, "Should I?"; Ken Hoggatt, "My Blue Heaven"; Elizabeth Kennedy, "Embraceable You" and "The Sunny Side of the Street"; Mollie Schlegel, "How Am I to Know?"; Dick Henderson, "Summertime"; George Wilson, "I Cover the Waterfront"; Billy Sutherland, "Stardust" and "Rose Room"; and Russell Bean, "St. Louis Blues."

Mouths Water On Norwegian Christmas Day

"The stockings are hung by the chimney with care" is a line from a famous Christmas poem that typifies how the American Christmas is spent. This year Professor Skaar, our exchange professor, is to have his first American Christmas and in all fair exchange the students of CPS should know how a Norwegian Christmas is spent.

Preparations for the festival starts as early as a month before when the slaughtering of the Christmas meat is done. About 14 days before Christmas day the baking begins. A good Norwegian house wife always has at least 7 different types of cakes and pastries and in every home a home brew is made similar to the American beer. Even the birds share in these festivities when sheaves of grain are set out in the back yard for them to feed on. During this season of good will toward man no hunting or trapping is allowed in the forest.

Mouth Watering, Yes?

On Christmas eve whole families gather together to feast and celebrate. First of all, a great dinner is served with rib of pig and lutefisk as the main course. Dessert consists of a rice cream covered with fruit sauce. In the fruit sauce is an almond and the one to find it in his portion receives the prize.

Overdue Library Books Will Hold Up Grades

"I'm sorry we cannot give you your semester grades, you seem to owe the library money." You don't want this to happen to you, do you? So, please, before the end of the semester, check with the library and see that you do not owe a fine for an overdue book.



Then the whole family gathers around the Christmas tree and sings carols. It is after this that the presents are opened. The Norwegian Santa Claus is called Jule Nisse and is a dwarf from Norwegian mythology. He is dressed in the same general pattern as the American Santa Claus and he also drives reindeer, but instead of coming down the chimney he enters through the front door.

Norwegians Celebrate Twice

The first Christmas day is a stay-at-home for the family when no work is done. The second Christmas day is when the festivities begin which will continue through the 13th of January. It is at this time that many public and private dances are held. Festivities similar to the American Halloween are held when children go from house to house dressed in costumes and receive favors from neighbors in the form of cakes and candies.

Strolling Reporter Takes Christmas Poll

In taking a poll on just what the students and faculty plan to do over the Christmas holidays, your reporter found quite a variety of answers. Among them were included:

CAROL TODD, LOIS FASSETT, and EVELYN MARSHALL, going to Camp Tarywood, a "Brownie" camp on Mercer Island, where they were counselors this summer . . . ANNA MARIE VAUGHN, to Seattle to celebrate her twenty-first birthday . . . TOM ECKSTROM, holding a party for a friend from Korea . . . MR. EPPERSON, playing Santa Claus to his 4-year-old . . . ED STANTON, going home to Moscow, Idaho . . . BOB BROWN, working manually in Jones Hall . . . GWEN DEAN and BARBARA LINDAHL, taking the east-bound train to Wenatchee . . . AMOS CAMBRIC, contemplating a job in the post-office . . . PROFESSOR KEUTZER, planning on seeing his family . . . HELEN MAHONEY, "I'm g'wan to sleep" . . . MARSHALL CAMPBELL, "Off Beat" author, off to Bellingham with brother, ART . . . JOHN DRAKE, thinking about it for 10 minutes . . . WALLY DUNN and RAY CASON, thundering to Olympia . . . MR. RASMUSSEN, taking it easy . . . KATHRYN HULTGREN, two term papers and bank job . . . BETTY TROXEL and BEVERLY JOHNSON, the 4:55 a. m. to Everett . . . several determined resolutions involving New Year's celebrations!

Sounding Off

By Chuck Gruenewald

A friendly smile will cure a great many of our troubles. Near the end of the semester, when the steady pressure of studies and activities has made most of us grouchy and tired, we become easily irritated. We lose our tempers too frequently, and trivial arguments become major issues. These things are not good for us, and they certainly do not help in our relationships with each other nor with our instructors. One of the best investments a person can make is a smile. It costs nothing, but it produces big dividends. Smiling not only makes others feel good; it gives each individual who practices it a happy feeling within himself. If each of us will practice smiling even when things go wrong, much of the tension of school life will disappear and all of us will be happier.

Around the Globe . . .

Good Will in UN; Peace On Earth

By Peter Rex Adkins

The members of the UN Assembly are going home for Christmas, too. They deserve a vacation, since they finally succeeded in setting up a trusteeship council. This council is one of the major organizations which comprise the UN.

Its membership quota calls for all of the nations administering trust territories, all of the Big Four powers, with or without mandates, and enough non-administering states to balance with the number of administering states.

There had been no trusteeship council set up prior to last week because:

No one knew how many states had mandates, because:

The new-born mandates of this last war had not been officially awarded to the different Allied powers, because:

The decision on awards lay with the trusteeship council. There was none.

The member nations at the Assembly finally agreed the trust territories of the world are to be administered by Great Britain, France, Belgium, Australia and New Zealand. As balancing powers, the Assembly sanctioned the appointments of the United States, Russia, China, Mexico and Iraq.

Decisions can be reached as long as we have leaders who are willing to try. There will be peace on earth because there is good will in the UN.

LOG BOOKS ARE NOT ISSUED IN THE PUBLICATIONS OFFICE!

We don't mind running a general information bureau and gripe headquarters, but it gets monotonous to say "No, you get them next door," the minute someone pokes his head in the door.

Some students who do not come to school until after the office is closed for the day or who have classes during the hour and 15 minutes when it is open are wont to express their views on the subject in no uncertain terms, and we can't say we blame them.

We are inclined to agree with them that an office which serves 1500 people should be open for business more than an hour a day.

The Puget Sound Trail

Established September 25, 1922 Published weekly During School Year

Official Publication of The Associated Students College of Puget Sound

Entered as second class matter at the Post Office in Tacoma, Washington, under the Act of Congress of March 3, 1879.

Subscription price 75 cents per semester; \$1.00 per school year by mail.

Member

Associated Collegiate Press

EDITOR	LOIS PHILLIPS
ASSISTANT EDITOR	DIXIE JAMES
BUSINESS MANAGER	JOY MOBERG
News Editor	Dave Parker
Sports Editor	Clay Huntington
Society Editor	Donna June Bennett
Feature Editor	Mary Jackson
Reporters—Ruth Behrens, Leo Buttigan, Marshall Campbell, Neva Iverson, Mary Jean Kean, Lyle Lindellen, Gwan Roberts, Marjorie Smovir, Frances Swenson, Mal Stevens, Harriett Warne, Bob Winkill, Bill O'Connell, Mary Kincheloe.	
Cub Reporters—Barbara Breazeale, Beth Davies, Diane Jensen, Leonard Docherty, Jack Erke, James Johnson, Nadine Kenster, Don Leonard, Betje Liljeqvist, Marcella Morton, Peggy Rough, Doris Rutherford, Don Thornhill, Laura Alm.	
Ad Manager	Dorothy Rudolph
Ad Solicitors	Ralph Haggstrom, Ruth Potter, Marcella Morton, Glo Gleason
Circulation Managers	Lois Vick, Vernetta Harville
Faculty Adviser	Margaret F. Whittlesy

Todd Explains Bronze Dates

Have you ever wondered about the little bronze plaques embedded in the cement in front of Jones Hall? Well, we have—so we decided to find out the history behind them. After asking questions for a while we found that very few people did know the story behind these dates, so we went to the best authority on CPS traditions, Dr. Edward H. Todd, president emeritus.

Doctor Todd explained that it has been the tradition in the past for every senior class to place its numerals there on class day.

The tradition was started in 1925 when the sidewalks were laid in front of Jones Hall. At this time the school bought the plaques and brought the numerals up to date. This practice continued until 1941, which is the last date to appear. The reason for this was that during the war no metal was available. Doctor Todd's suggestion is that the plaques be brought up to date by the classes now in school belonging to the same quadrants as did those classes whose date blocks are missing.

The quadrants, which are each of the four sides of the color post, symbolize the four points upon which CPS is based—good government, religion, science and liberal arts, represented by the colors purple, cardinal, yellow and white.

Equipment Received

Twenty-two desks, 22 filing cabinets and miscellaneous office equipment have been received by the college, through the War Assets Corporation, President R. Franklin Thompson said this week.

The supplies, formerly in the Tacoma OPA office, will be used primarily to provide office facilities for new faculty members.

Tradition of "The Hatchet" Is One of the School's Oldest

One of the oldest and most strongly entrenched traditions of the college is the one that has to do with the "Hatchet." The hatchet, a relic found in the basement of the old University of Puget Sound when it was located on Sprague street, is the gift of each year's graduating class to the incoming senior class of the following year. A gift, that is, if the erstwhile seniors are on their toes.

Exchange in Spring

The hatchet exchange takes place in the spring of the year at the "senior chapel." Sometimes the hatchet is actually passed, but more often the clues to its whereabouts on the campus are passed to the junior class president. From that time on, it is the duty of all classes to try to get the axe before the juniors have it in their possession, or to take it from them, if they can.

If the freshman class should get the hatchet, as has happened in the past, they would keep it until their senior year; at which time it would again be passed. Each senior class carved its initials upon the handle, or embosses them upon the blade, therefore any class that does not get the hatchet loses the opportunity to mark the relic.

Violence at "Passing"

There have been many turbulent scenes through the years at "the passing of the hatchet." There is the story that at one time such



Members of the Women's Collegiate Chorus: Back row, left to right: Ruth Southwell, Barbara Precheck, Charlotte Johnson, Peggy Rough, Ritchey Gardner, Mary Kincheloe, Mary Lou Cooper, Betty Sorenson, Gwen Jones, Elenor Roundtree, Eleanor Nelson, Peggy Egbert, Shirley Opsata. Front row: Lorna Hill, Betty Lou Fyke, Pat Wingard, Lorraine Overstreet, Beverly MacDonald, Marjorie Todd, Barbara Rowe, Peggy Allen, Janice Hitchcock, Shirley Taylor, Peggy Taggart, Betty Abrahamson, Betty Kornmesser, Marie Johnson, Barbara Hager, Jewel Gueffroy, accompanist for the chorus, is seated at the piano and Miss' Erla Mae Cramer is directing.

50 Chorus Members Supply Christmas Cheer At CPS

About fifty CPS students are asking Santa for an unusual present this year—a new voice. These fifty students are members of the Men's and Women's Collegiate Choruses. Up to this time they have been only a name in the College Bulletin, but during the Christmas season they have blossomed out and proved their worth.

For the past three weeks they have increased their weekly rehearsals to three a week and, as most will agree, have shown surprising results.

Chorus Gives Chapel

Last week the Women's Collegiate Chorus gave its first performance, a chapel of Christmas music. Professor Clyde Keutzer commented, "They did so well that

the Adelphians had better watch their step." He stated that they had done a good job of maintaining the high standards set for them by musical groups in years past.

The incidental solos were taken by Pat Wingard, Betty Lou Gyke, Peggy Allen, Beverly MacDonald, Mary Kincheloe, Margery Todd, and Lorraine Overstreet.

Join Forces For "Carol"

The men and women joined their efforts and did an effective job of background singing in the dramatic production of Dickens' "Christmas Carol" which was given Friday the 13th for the high school students and Sunday afternoon for the public.

Last Monday night the weary travelers who drifted in and out of Union Station were greeted by the carollers. Under the direction of Professor Ivan Rasmussen they sang one and all of the beloved Christmas carols.

Rasmussen Directs 15 Men

The Men's Collegiate Chorus is made up of 15 men. They are: Richard Simpson, Robert Sessions, Robert Church, John Needham, Harry Proctor, Gerald Kirwan, Don Carsten, Eldon Tamblin, Don Robbins, John Hayes, Ariel Brandt, Don Cole, Glenroy Cruver, Tom McCormick, and Howard Follin.

LaPore's College Food Store
and
Blythe's Meat Market
3118 North 21st Street

Season's Greetings
From the following business men at South 23rd & K who invite you to visit their complete shopping district.
Ellens Dairy Store
23rd Street Dress Shop
Riser's Drug Store
Fairmont Cleaners
Pauls Bakery
Hank's Barbershop "Punchy"
Evelyn's Beauty Parlor
23rd Street Shoe Repair
Don Piper
23rd Street Public Market
George & Stan's Service
Bill Childress
Riser's Annex
"It Pays to Shop 23rd St."

Omicrons Beat House Crisis

Santa Claus will have a chimney when he calls on the Delta Pi Omicrons—the fraternity has the chimney and a house around it. The new Omicron home is at 1516 North Oakes St., within easy distance of the campus, the bus line and the corner grocery.

Bob Salmon stated that the property was the subject of Omicron interest for several days before the decision was made to locate fraternity headquarters there. Members took possession late in November and made immediate progress in furnishing the house for occupation. Pledge volunteers organized a cleanup crew and proceeded to clean and polish from basement to attic. The quarters are now liveable and are being used for meetings.

Omicrons were hosts to mothers of members at an informal tea yesterday to reorganize the Mothers' Club.

Betas Hold Christmas Party

Alpha Beta Upsilon held its annual Christmas party for members and pledges last night in the SUB lounge. In charge of the dessert and bridge were Jane Hill and Gwen Simmons. Decorations and cleanup were in charge of the pledges.

MERRY CHRISTMAS
and
HAPPY NEW YEAR
★
ANDERS FLORIST
255 So. 11th St.
Fidelity Bldg. MA 7113

Pep Club Members Draw Up Charter

Newly organized this year, the Pep Club has drawn up its charter which includes the purpose of the club as well as rules for membership, elections, and emblems.

The purpose of the Pep Club is to form a nucleus body to promote school spirit among the students of CPS. This will be accomplished through working with the yell staff and providing a more organized cheering section at games.

To become a member one must indicate a willingness to participate in Pep Club activities and attend meetings regularly, provided, that is, that there is a gap in the membership as the maximum number of the group is limited to 50. Dues are 50 cents a year per person.

The officers are president, vice president, and secretary-treasurer and are elected for the period of one school year. Those holding these offices now are Bruce Rector, Chuck Howe and Bev McDonald.

The emblem of the Pep Club is to be a log with the letters P E P inscribed across it in white on a maroon background.

Chuck Howe headed the committee in charge of writing the constitution.

Librarians To Relax During Holidays

The hard working library staff of CPS has decided to take a much earned vacation, according to Warren Perry, librarian. For this reason the library schedule has been changed. During the holidays it will be as follows:

- Dec. 21—9-12 a. m.
- Dec. 23—9-12 a. m., 1-4 p. m.
- Dec. 24—9-12 a. m.
- Dec. 26, 27—9-12 a. m., 1-4 p. m.
- Dec. 28—9-12 a. m.
- Dec. 30—9-12 a. m., 1-4 p. m.
- Dec. 31—9-12 a. m.
- Jan. 2, 3—9-12 a. m., 1-4 p. m.
- Jan. 4—9-12 a. m.

In Psychology 51 class the other day Professor Delmar E. Gibbs was searching haltingly for adjectives, "You've seen, sickly, repulsive—" "Oh, pipes up Art Hansen, "you eat in the SUB too!"

PROCTOR THEATRE
2611 No. Proctor PR. 5461
Fri., Sat., Dec. 20, 21
Roy Rogers—Sons of Pioneers
"HANDS ACROSS THE BORDER"
and Carol Landis, Allen Joslyn in
"IT SHOULDN'T HAPPEN TO A DOG"
Sun., Mon., Dec. 22, 23
Jack Carson—Dennis Morgan
"TWO GUYS FROM MILWAUKEE"
and
Selected Short Subjects
Tue., Wed., Thur., Dec. 24, 25, 26
Jeanne Crain—Cornel Wilde in
"CENTENNIAL SUMMER"
(In Technicolor)
Open at 4:30 p. m. Christmas Day.

SWEATERS
100% wool, all styles, sizes, colors.....3.50 to 6.50
Lingerie, Gowns, Bed Jackets
Millinery, Beanies, Scarfs
Contoure Cosmetics
also
Beauty Parlor Featuring all types of
Beauty Culture
LITTLE CHARM SHOP
2614 No. Proctor PR 4402

MONTY'S CAFE
606 South Kay
The place to MEET friends
The good place to EAT
Open Any Hour of the Day or Night

Donald
will ar
lve men
ing the
id no def
obable st
ndeberg
Anderson,
enter; ar
Hobbs, g
Lindeberg
roving sq
will sho
previous
think sn
icket."
nitman m
conferen
and thre
y have
four gam
d-fought

0 Da
: By
ysics
believed t
y an over
damaged
research la
Howarth l
t. Damag
l at \$3000
e started
d burned
d. It is be
n lack of
aiting for
classes sn
some sn
are thin
uay hot
is bottles
h Plaster
l Table v
set were l
ic
important
l accordin
Seward, l
departmen
bes. An os
n, physics
n helping
d. Two
vere dama
(An oscill
nt for sho
nges in a

MOVIES OF
dy movies,
vents have
ill be held
g at 7:30
ruditorium.
two hours in
ational, an
value. The
t series. Fr
5 short re
will be pe
n in Jones.

'rospe
Trip E
ring, Dr.
least a
Sound fa
i's recent
members i
m, and to
American
Methodis

n exceptio
Dr. Thomp

he said,"
nd all the
and producti
school year."
Dr. Thompson sa
trip, although succe

be introduced in chapel Feb. 24, 26, and 27 will be required to
... have become
... the prohibition has
... been lifted since the war
Hults.
That clean towels are not fur
... nished in the boy's gym was re
mediately The rest of the money
will be banked and later divided
into equal parts and spread over
that most of the college repre
sentatives I talked to were inter
ested mainly in getting back to
school year."



Merry Christmas!



TREE DECORATIONS
GREETING CARDS
GIFTS

Sixth Avenue 10 Cent Store

OPEN EVENINGS

GIFT TYINGS
WRAPPINGS
SEALS

MERRY CHRISTMAS, GIRLS!!

HAPPY NEW YEAR
BOYS . . .

and you, too, McNary

From

SIGMA MU CHI

SEASON'S GREETINGS

From

WASHINGTON
SPORTS SHOP

918-20 Pacific
TACOMA

Holiday Time
Is Picture Time

The Washington
Camera Mart

1021 Pacific Ave.

SEASON'S GREETINGS

From

NORMAN'S
APPAREL

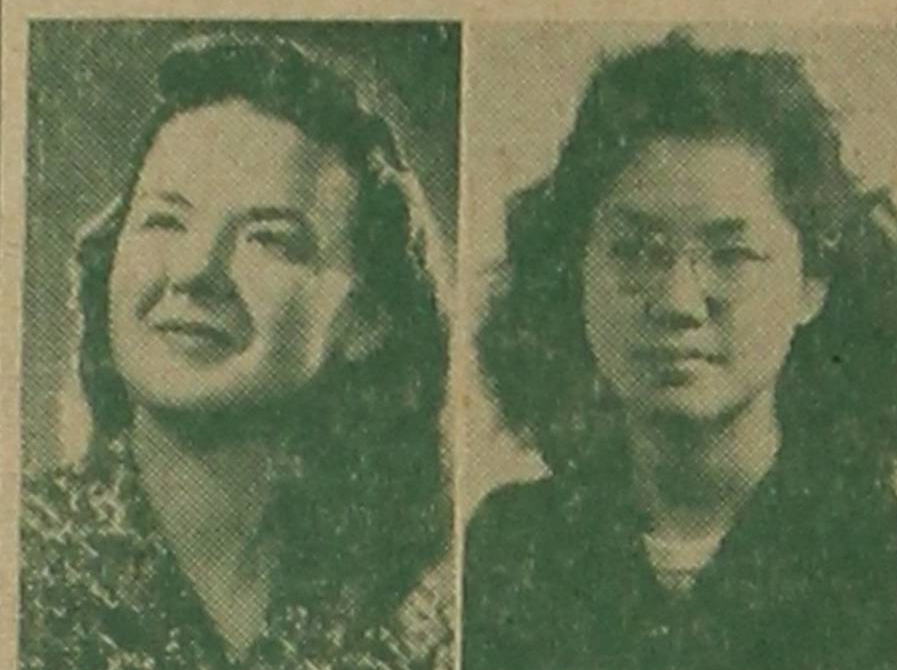
926 Broadway

If you are not using eye-saving student lamps . . .

See

Beckman Electric

2701 6th Avenue Corner 6th and Oakes



ELIZABETH ANDERBERG
JING HO LING
TROY STRONG

Mary Rough

Mary Rough, a dark-haired, blue-eyed senior, was "surprised and thrilled beyond words" when she discovered that the mail which she supposed was just another advertisement was the letter saying she had been chosen for "Who's Who Among Students." Graduating from Clover Park High School, she came to CPS in 1943 and became a member of the Campus Playcrafters, SCA and Alpha Beta Upsilon sorority. Mary is an occupational therapy student with a biology major. While a sophomore she was president of the Occupational Therapy students.

SEASON'S
GREETINGS

FROM YOUR MEN'S WEAR
CENTER

LUNDQUIST LILLY

Troy Strong

Troy Strong, president of SCA, and member of the Regional Executive Committee of SCA, came to CPS in January, 1946. He was previously studying at the University of Kentucky and spent 19 months in the air corps. As a delegate to the Pacific Northwest College Congress last spring, he was elected student representative to the United Nations Conference in October. Majoring in history, Troy is studying for the ministry.

Irene Fearn

Irene Fearn, one of the most talented people on our campus, is a drama major and a music minor. A member of the Campus Playcrafters, she received the Howarth Scholarship for drama this year and was pronounced the most outstanding actress of last year. For the past two years she has held the Presser Foundation Scholarship for voice. She was president of the Adelpian Concert Choir last year and is treasurer this year. Irene is art editor of the *Tamanawas* and past vice president of Kappa Sigma Theta.

Elizabeth Anderberg

Elizabeth Anderberg, editor of CPS's yearbook, *The Tamanawas*, is well known on the campus for her dramatic ability. She has directed and taken part in plays here since her freshman year. Besides her acting, she is a member of the Adelpian Concert Choir, Central Board, SCA, and Otlah, senior women's honorary. Last year she won the Women of Rotary award which is based on scholarship. In her sophomore year she was a Spur.

BAKERS'

Have His Ideal Christmas Gift

BAKERS' Men's Shop

756 Broadway BR 6198

HOLIDAY GREETINGS

From Your
Christmas Store

11th and
Broadway
Phone
BR 4242



For an evening of fun
come skating to
on Beautiful Lake Steilacoom

FRIDAY NIGHT IS THE SPECIAL STUDENTS' NIGHT

Special Parties at Low Prices
Can Be Arranged by Phoning
Hal Webb, Manager at LA 2176



Pro
Instruction
Anytime

Happy New Year!

CHRISTMAS CHEER

from

Richardson's

TACOMA'S STORE FOR SKIERS

940 Commerce

Wilson's SPORT EQUIPMENT

•

•

DILL HOWELL

929 Commerce

Best Wishes

For A

MERRY CHRISTMAS

and

HAPPY NEW YEAR

From

Quality Knitting Co.

934 Commerce

Christmas Greetings

★

**HELEN DAVIS
SMART APPAREL**

★

917 Broadway

Ralph Lundvall

On the football field that small, stalwart guard, seemingly like a block of cement, was Ralph Lundvall. Not only on the football field, but in the academic field as well, did he uphold CPS standards. For Ralph was chosen as one of the eighteen scholars to represent CPS in the *Who's Who in American College and Universities of 1946*.

Ralph's majors are physical education and literature. He is a member of the Sigma Zeta Epsilon fraternity.

Carol Hamilton

"Take an active part in everything you are a member of" has been the motto of Carol Hamilton, senior. Last year she was president of Women's Federation. She is a member of Delta Alpha Gamma, which she has served as treasurer and secretary. Active in athletics, Carol has earned her sweater, and is now general sports manager for W.A.A., and last year she was treasurer. She also has been secretary of Kappa Phi, and is a member of Central Board.

Polly Packard

Polly Packard, ASCPS vice president, has served as secretary of the student body, pledge mother of the Alpha Beta Upsilon sorority, president of Spurs, and vice president and treasurer of Kappa Phi. An Otlah member, Polly lives on the third floor of Anderson Hall. She will graduate this spring ready to begin her nine-month period of clinical training as an occupational therapist.

Beatrice Young

Bea Young, senior, is president of the Occupational Therapy Students, having qualified for this office by being vice president last year. Her other activities include being president of SCA last year and treasurer the year before, playing on three all-star women's athletic teams, receiving both the Marjorie Mann scholarship and the Howarth scholarship, and heading the WSSF drive held recently on the campus. She is a member of Kappa Phi and IRC.

After graduation she expects to go into O.T. training in the east for about 10 months. Her main aim in life is "to pass the national O.T. examination in March."

Inez Doherty

Inez Doherty, chairman of the chapel committee, is Dean Lyle Ford Drushel's office assistant as well as being Kittredge Hall assistant. A member of the choral readers, Inez is recording secretary of the Alpha Beta Upsilon sorority. Next spring she will graduate with a double major, speech and literature, and an art minor. Last year she held a Howarth scholarship and this year she is doing independent study in literature.

Rosa Mae Monger

Rosa Mae Monger, a junior, is majoring in chemistry. Her record shows that she was a member of the Women's Federation, SCA, WAA, and secretary of the junior class. She has the honor of being president of the National Spurs and past president of the Spur chapter at CPS. Rosa Mae is secretary of Kappa Sigma Theta sorority.



**POLLY PACKARD CAROL HAMILTON
BETTY JANE CAPP**

Merry Christmas and Happy New Year to all our CPS Vets. Welcome home, boys.

Farley's Florist

6th Avenue and S. Anderson

MA 1129

Christmas Greetings

From

The STATIONERS, Inc.

926 Pacific Ave.

Jing Ho Ling

Jing Ho Ling, senior, has not only been an outstanding student, but an active worker on the campus. She is a member of Otlah and Mu Sigma Delta, scholastic honoraries, and is serving Kappa Phi as historian. During her junior year she was representative to Central Board, treasurer of Women's Federation and treasurer of S.C.A. As a sophomore she was editor for Spurs and was a representative to the Independent cabinet. She has also been on the *Trail* and *Tamanawas* staffs.

Jing Ho holds a Howarth scholarship in psychology. She is majoring in sociology and psychology.

Bob McNary

Robert (Bob) McNary, recently listed in *Who's Who*, entered CPS in 1940 and as a freshman played the trombone in the band and orchestra. He was assistant intramural manager and when a sophomore became the intramural manager. Now, as a veteran, he is a member of Phi Kappa Delta, forensics manager, Independent sergeant-at-arms, chairman of central board's auditing committee and editor of the *Log Book*.

Bill Causin

Bill Causin, listed in *Who's Who*, entered CPS in 1940. He was a member of the Intercollegiate Knights and was elected as ASCPS president in March, 1943, but served only until June, 1943, when the infantry found him. He was also president of his fraternity, Delta Kappa Phi. He is now a senior and vice president of his class.

CHRYST

Radio Repairing
Admiral Dealer

609 North Pine MA 7542

Send Her Flowers

For the Yuletide Season

From

**HAYDEN WATSON,
Florist**

256 S. 11th.

MA 0300

Louise Kipper

Busying herself in a wide range of activities is E. Louise Kipper. Beginning in her freshman year, she worked each year in W.A.A., S.C.A., and Kappa Phi. She has held the offices of worship chairman in S.C.A. and membership chairman and treasurer in Kappa Phi. In her sophomore year she was secretary of Spurs, and began work in her two major fields—sociology and French. Louise has a home economics minor. She won two Howarth scholarships in sociology.

In her junior year she was secretary of her class. During this year she began work in forensics and with her partner captured first place in women's debate at the Pacific Coast Pi Kappa Delta debate tournament in Stockton, California. At the end of the year she was admitted to Washington Alpha Chapter, Pi Kappa Delta, national honorary debate fraternity.

Phil Garland

Phil Garland, president of ASCPS, is majoring in art. An Alpha Chi Nu fraternity member, he has served as treasurer and sergeant-at-arms of that organization. He is a member of the chapel committee and presides over the Central Board.

Joining the army in 1942, he resumed his studies at CPS the spring semester last year. Phil's choice of a future occupation is that of a book-illustrator.

Merry Christmas

to

The Students of College of
Puget Sound

from

**The
NEW YORKER
Cafe**

6th and Cushman

See Us For . . .

- RADIOS
- PHONOGRAPHS
- RECORD-CHANGERS
- RECORDS

PROCTOR RADIO SOUND & SERVICE

3318 No. Proctor

PR 2567

"Splinter Field", Other Campus Improvements Are Made Possible by the Alums

Did you know that "Splinter Field," the name recently applied to the Logger football field was accomplished entirely through contributions from alumni of CPS? Yes, this is just one phase of a project undertaken by the grads. All activities of the Alumni Association center around the basement room in Jones Hall with the sign "Alumni Promotion-Teacher Placement." Inside, pert little Marvel Melish has the tremendous job of keeping tab on nearly a thousand alums and their activities. City directories, telephone books, catalogs, and a huge filing cabinet help maintain some order in the tiny office. Never idle, Marvel is often seen with scissors in hand as she plunders the city newspapers for news and pictures of alums.

Inactive for nearly four years, this department is again hitting full cooperation with the return of Richard Smith, school alumni secretary and editor of the organization's sounding piece, *CPS Alumnus*, which is published four times a year. The first issue of this year appeared last month. This is sent free of charge to all alums and rates with the best of alumni publications in the west. Dues and subscriptions are now nil, and all financial contributions are entirely voluntary.

Alums To Improve Ball Field

The proposed project undertaken

by the alums this year is a combined venture. First objective is the turfing and installation of bleachers on the football field.

Because of the urgency of a suitable place to practice this fall, the sawdust and splinters were deposited there. The proved to be well worth the cost, as the injuries in football practice sessions were held to a minimum.

The second, and of great concern to everyone, is the landscaping of the grounds around the school. Possessing wonderful potentialities for such an undertaking, the CPS terrain will have to await the return of normalcy to the attitude of motorists concerning the area already turfed. **Where's Sally?**

There's a telephone in the alum office, too. "I wonder what's Become of Sally" may be a theme appropriately applied here, as not a few inquiries concerning graduates are received each day. Plans for moving the department to more spacious quarters are still pending.

Today, on the eve of a great building project at CPS, it is only fitting that we look back with pride and express our gratitude to those alums, who, through their unceasing efforts, have enabled us to receive the benefits of the education we pursue.

Alumni of CPS, we salute you.

"Shipwreck Shuffle" Is Dance Theme

Ushering in the yuletide season will be the Kappa Sigma Theta-Sigma Zeta Epsilon pledge dance, "Shipwreck Shuffle," which will be held this Friday night, December 20th, at the Titlow Beach Lodge. In years past this dance has been a traditional affair.

Jo Kraus, Charlotte Stalwick, Carl Niemi, John Needham, and Brian Kepka are the chairmen for this gala event.

They have chosen the following committee chairmen: decorations, Virginia Lochow, Lloyd Silver; chaperones, Beth De Mille, Bob Morrison; cleanup, Jo Ann Kirkebo, Bob Hall, Jack Lowney; refreshment, Ruth Beer, Colleen Kelly, Bob Robbins; music, Barbara Hufford, Bob Myers; entertainment, Pat Wingard, Jack McMillan.

Lambdas Celebrate Yuletide

The Christmas spirit was in full glory in the Lambda Sigma Chi room last night when the members and pledges of that sorority celebrated their annual Christmas party.

Gifts were exchanged, Christmas carols were sung and refreshments were served during the party.

Among those attending were Mrs. Helen Fossum, faculty adviser, and Phyllis Swanson, alumni adviser.

The committee in charge of the affair were Elenor Roundtree, Maisie Harold and Dixie Simmons.

Sorority Re-elects President; Chooses Other New Officers

At their Wednesday evening meeting last week, members of the Delta Alpha Gamma sorority elected Lois Lynch as their president for the coming spring term.

Other officers are first vice president, Donna Mae Kiste; second vice president, Shirley Gibbs; recording secretary, Natalie Hyndman; corresponding secretary, Dorothy Schut; treasurer, Pat Mason; Inter-Sorority representative, Carol Hamilton; historian, Charlotte Conrad; and sergeant-at-arms, June Hyatt.

This semester's officers were Lois Lynch, president; Marian Sandal, first vice president; Shirley Gibbs, second vice president; Eloise Cruver, recording secretary; Genevieve Verone, corresponding secretary; Carol Hamilton, treasurer; Natalie Hyndman, Sorority representative; Donna June Bennett, historian; and Dorothy Schut, sergeant-at-arms.

Golden Acorn Symbolizes CPS Honorary

Many years ago, in the year 1922, to be exact, there was formed on the old campus on Sprague Street (where Jason Lee Junior High School now stands) an organization that was to take its place among the important honorary organizations of the present College of Puget Sound.

"Otlah" was the name picked for the group, which chose as its symbol and pin the Golden Acorn. Otlah, senior women's scholastic honorary, was patterned after the national Mortar Board organization and now meets all qualifications of Mortar Board except that of having at least fifty women in the graduating class.



To be chosen for Otlah, one of the greatest honors for a CPS woman student, one must have a 2.0 grade average and be active in college affairs. The bestowing of this honor is also based upon character. Junior women eligible for Otlah are pledged in the spring in an impressive ceremony in

Students Agree; Parking Situation Remedy Needed

Campus Groups "Deck the Halls"

Rhodes and Fishers have nothing on us! Maybe we don't have Santa Claus in our front window, but Christmas decorations galore have put CPS in a happy holiday mood.

In the auditorium of Jones Hall the balcony railing is covered with green fir boughs decorated with silver bells that tinkle sweetly between classes. So much pleasanter than the usual harsh buzzer! (What's the matter? No imagination?) The ambitious Spurs, who undertake this yearly project, also placed a red candle on the door of each classroom.

Particularly outstanding is the window between the first and second floors of Jones Hall. Designed by Lucille Randall and constructed by the other members of Otlah, senior women's honorary, the lovely Christmas figures look like stained glass. Tall red candles surrounded by evergreens burn in front of the window.

Christmas trees have been placed in both Jones and Howarth halls by the Knights of the Log and special decorations by the home economics department adorn Howarth doors.

All of CPS is put in a festive spirit by these beautiful symbols of the Christmas season, but the bells and boughs and candles have special significance for those many students for whom this is the first Christmas "at home."

Chapel.

The practice of decorating the window on the Jones Hall landing originated during the first years of the Christmas Tea when tea was served in Jones Hall underneath the window. Plans for this year's window were made by Lucile Randall.

Officers for this year's group are: Kerttu Kahn, president; Louise Kipper, vice president; Lucile Randall, secretary; Alice Ann Cross, treasurer, and Anna Marie Vaughn, historian.

Have you tried to find your way to Anderson Hall lately only to get lost in the sea of mud and have to give up your mission? Well, several CPS students have, and here are their comments on the subject:

BILL WOODS, freshman: More use should be made of the waste lands west of the school for parking the horde of jalopies that settle like locusts around Anderson Hall each morning.

DON GAVIN, sophomore: The area north of the teachers' parking space could be utilized to great advantage.

SHIRLEY EMMERT, sophomore: The lawn area around Anderson Hall should be taken care of and not be cut up like it is now. Maybe a guard rail would protect the area. Something should be done.

BOB GRAY, sophomore: I believe a parking area should be provided somewhere, but soon. There is an accumulation of more and more cars every day, and there just isn't any place to park our cars.

BILL STONER, freshman: I believe that if the lot west of Anderson Hall was clear and graveled, a large number of cars could be parked there, relieving the congestion at present.

NORM WILLARD, senior: I believe that the college would profit, in the long run, by constructing temporary emergency parking areas now, at any cost, and then enforcing the parking rules with the aid of the police.

SHIELRY GIBBS, senior: Definite parking areas should be graveled and fenced with guard rails.

"Christmas Cotillion" Theme Of Lakewood Terrace Dance

Lakewood Terrace Ballroom, December 20, are the place and date of the yearly semi-formal Christmas dance of Lambda Sigma Chi sorority.

The name chosen is "Christmas Cotillion," and the decorations will carry out the Christmas spirit.

The patrons and patronesses are Dr. and Mrs. Raymond S. Seward and Dr. and Mrs. M. E. Nelson.

Co-chairmen in charge of the dance are Betty Barkost and Joy Adams. Music will be furnished by Walt Gunstrom's orchestra.

THE COLOR SHOP

ART SUPPLIES
Brushes, Oils, Watercolors
Temperas, Papers

BRoadway 3632

401 Bernice Bldg.

DON'T BUT

cut a class for one of our milk shakes

see us in your free time.

Proctor Ice Creamery

At "Proctor & 26th"

PROctor 9066

Your Photographic Headquarters



Eastman Kodak Stores, Inc.

910 Broadway

Tacoma

Kozy Cafe

Breakfast — Lunch — Dinner

For Your Enjoyment

A Complete Soda Line

WE SERVE OLYMPIC ICE CREAM

Open Monday Through Thursday, 7:30 a. m.—8 p. m.

Friday and Saturday till 2 a. m.

Sundays, 2 p. m. to 10 p. m.

3812 North 26th

PROctor 3355

OAKES APPAREL

921 Broadway, Tacoma

MONTY'S CAFE

606 South Kay

The place to MEET friends
The good place to EAT

Open Any Hour of the Day or Night

WATCHES AND JEWELRY

for CHRISTMAS

RAY SOWERS

North End Jeweler

2703 No. Proctor PR 5681

HAMBURGERS

REFRESHMENTS

at PAT'S

FOUNTAIN

SERVICE

2710 North 21st

ASK FOR

Olympic



Served by Your

Commons Lunchroom

Chi Nu Pledges' Sneak to Brown's Point Successful

"Antique Antics" was the theme of the Alpha Chi Nu fraternity pledges in their successful pledge sneak last week. Tilman Cheatham, an active, was kidnapped early in the afternoon and taken to the dance bound as a "mummy." Another prisoner, Clarence Nelson, captured while attempting to follow Dr. Charles T. Battin to the dance, escaped and lead the rest of the members in a nearly successful hunt for the pledges.

Dr. and Mrs. Utterback were host and hostess at their Brown's Point home. The chaperone, Dr. Battin, kept his reputation as an economist and won the door prize by guessing almost correctly the number of beans in a bottle. The prisoner spent the evening counting the 1846 beans.

Those attending were: Pledge Father Lloyd M. Gladdis, Romona Merry, Pledge President and Mrs. Dwayne H. Erickson, Gordon M. Hill, Jean Mitchell, Robert Rhule, Eleanor Wilson, Dick Nicholson, Jo Ann Leaverton, Fred Jacobson, Betty Donaldson, Mr. and Mrs. Richard Peterson, Mr. and Mrs. Phil Rodgers, Mr. and Mrs. James T. Roberts, Dick Gaas, Diane Jensen, Robert Rule, Lorraine Rockway.

Also Edward Cook, Sally Ann Christensen, James Rumbaugh, Dorothy Lamour, George Hill, Elaine Mitchell, Robert Mack, Anabelle Lee, James Lantz, Barbara Hite, Jack Shaughnessy, Shirley Christiansen, John Mathewson, Jeanne Williams, Mr. and Mrs. Bruce F. Todd, William Sheard, Dorothy Fowler, Dave Evans, Carol Huntington and Stewart Sether.

Women Organize W. A. A. At College 18 Years Ago

Prominent in the alphabet of campus organizations is W.A.A., the Women's Athletic Association, which was organized at CPS in the fall of 1928 with Evelyn Bjorkman as its first president. The immediate ancestor of W.A.A. was the Women's Letter Club, which began in 1926 with six charter members. The following year the first letter sweaters were awarded to the eight women who qualified for them. W.A.A. has grown with the college and is now one of the outstanding activities for women.

Enthusiasm and dependability, (and, incidentally, a "C" average), rather than skill, are the essentials for membership in W.A.A., where democracy, leadership, sportsmanship and cooperation are promoted. The two hundred points necessary for admittance are earned at the rate of one hundred for each sport. When the first six hundred-point mark is reached, a letter is awarded. With the second six hundred, the girl receives the coveted sweater with two stripes. Each additional six hundred points means an added stripe.

Each year nine different sports are played, with five as inter-class competition and four as inter-sorority battles. Basketball, volleyball, badminton, and bowling are usually the sports in which sororities compete. Each sorority has a hopeful eye every year on the All-Year Inter-Sorority Sport Cup and the Basketball trophy. Last year Delta Alpha Gamma became the proud possessor of the Sport Cup, and Alpha Beta Upsilon was the champion in basketball.

Ten teams participated in the inter-class basketball tournament which ended on November 25, with sophomore team 5 the winners. Phyllis Blaser captained this winning team, whose members were Bev Van Horn, Fran Swenson,

Eleanor Roundtree, Harriet Warne, and Patsy Dooley. Six games won, one lost and one tied was the enviable record of the inter-class champions. Runners-up were senior team 1, sophomore team 6, and freshman team 8.

Josephine Boulton Assumes Position In Dean's Office

If you have been in Dean Register's office recently, you were no doubt greeted by a friendly, helpful young woman who immediately put you at ease. You didn't know her name and her face was unfamiliar, so you draw the conclusion that she was "new here." Right you were!

Miss Josephine Boulton is new here, having become Doctor Register's secretary last month. As a registered nurse, she came to Tacoma about a year ago from Durham, North Carolina. There she was associated with the U. S. Public Service. Miss Boulton had the opportunity of working with the new sulfa and penicillin drugs, on treatments involving quick cures.

Espeland-Keyes Nuptials Dec. 28

Two CPS students about to join the ranks of Mr. and Mrs. Joe College are Constance Espeland and Russell H. Keyes, both freshmen. They will be married December 28 in the Immanuel Presbyterian church, with the Rev. Harold B. Long officiating. She is the daughter of Mr. and Mrs. Walter Espeland and he is the son of Mr. and Mrs. Edward R. Keyes.

Matron of honor and best man will be Mrs. Harold A. Anderson and Mr. E. R. Keyes, sister of the bride and brother of the groom, respectively. Miss Espeland's attendants will be Misses Margaret Armstrong, Sally Eshelman, Beverly Gazecki, Florence Guthrie, Alyce Healy and Dorothy Simmons. The Misses Jean and Rita Espeland, cousins of the bride, will light the candles.

Ushers will be Messrs. Rodney Brown, Ronald Button, Thomas Cootsona, Donald Diamond, Walter Espeland, Jr. (brother of the bride), and Thomas Porro.

Stadium High Grads Plan Alumni Dance

The Christmas holiday season will bring another annual Stadium High School Alumni Dance. This year's dance will be held at the armory from 9 to 12:30 on the evening of December 28.

Celebrating the 40th anniversary of Stadium High School, the affair is the first alum dance to be held since 1941.

Dick Petersen, alumni president, has appointed Bea Rayno and Lloyd Silver as co-chairmen of the dance. Walt Gunstrom's orchestra will furnish music for the occasion.

Election of alumni officers will take place at the dance. Proceeds will be used for a fund for hall pictures of graduating classes. Tickets may be obtained from either of the co-chairmen or at the door.

Betas Choose Pledge

Barbara Noble formally pledged Alpha Beta Upsilon recently. She is a 1946 Lincoln graduate and is active in Kappa Phi and W.A.A.

Phalanx Chapter Is Formed Here

A Tacoma Phalanx fraternity, composed of College of Puget Sound students, and affiliated with the Tacoma Y.M.C.A., was granted a charter following a dinner held in Seattle at the Frye Hotel last week.

President of the Omega chapter is Douglas Baldwin; Paul Boyle is vice president; Jack Field, chaplain; Bob Mills, secretary, and John Taylor, treasurer.

The collegians were feted by the three Phalanx chapters and induction services were held in the Central Y.M.C.A. in Seattle. First of a number of activities planned by the new fraternity will be a fireside meeting tomorrow evening at the home of James Reynolds.

Other members of the new fraternity are Ray Frederick, Dave Evans, Don Thornhill, Abe Malanca, Bill Chalk, Martin Sangster, James Reynolds, Milton Cochran, John Drake, Paul Diamond, Bill Funk, Gene Dosa, Dale Murray, Don Briggs, Stan Olsen, Don Adams, Don Diamond, Bill Brazier, Bud Thompson, and Joe Boyle.

FOR SALE - Tuxedo, size 36, single breasted, excellent condition. Call Main 6248.

Ludwick-Seabloom Wedding Saturday

December 21 has been chosen as the date for the wedding of Lucille Ludwick to Walter Seabloom. She is the daughter of Mr. and Mrs. James R. Ludwick and he is the son of Mr. and Mrs. O. R. Seabloom.

The ceremony will take place at Epworth Methodist church in Tacoma at 8 p. m., and the reception will follow in Anderson Hall at CPS.

Both young people are '46 graduates. Lucille was pledge mother of Delta Alpha Gamma and a May Queen attendant. Walt served as president of Delta Kappa Phi and of Inter-Fraternity council. He is now teaching history at Lake Washington High School in Kirkland.

Zeta Pledges Outwit Confident Members

Such a well concealed hiding place was chosen by the Sigma Zeta Epsilon pledges for their sneak that though the members knew where they were they were unable to find them.

From 6 p. m. on, the pledges were in the home of Chester McKasson at Lakewood. They had a prepared dinner delivered to them and played cards for recreation. Around 9:45 the Zeta members found out whose home the pledges were in, but they did not know the exact location of it.

Professor F. A. McMillan was chaperone for the group and Sid Smith is pledge father.

3 Buildings To Be Placed on Campus

That the army surplus buildings being moved here from Paine Field, near Everett, will be placed in the area between the new men's dorm and the gym was disclosed this week.

The college will prepare the ground and furnish the utilities connections, the cost of the balance of the installation to be borne by the federal government.

The three buildings, each 150 by 25 feet, will provide classroom space for about 560 students as well as making available additional office space.

Medical Skill Test January 11

Saturday, January 11, pre-med students will have an opportunity to take the aptitude test prepared by the Association of American Medical Colleges.

This test is given annually by the Association and is required for admission to the medical colleges. This examination qualifies students for entrance in medical school during 1947.

Students can get information on obtaining the form from Miss Boulton, Dean Register's secretary. A fee of \$5 is charged, and no one will be admitted to the examination room without this payment. It must be either a check or money order made out to the Graduate Record Office. No other form of payment will be accepted.

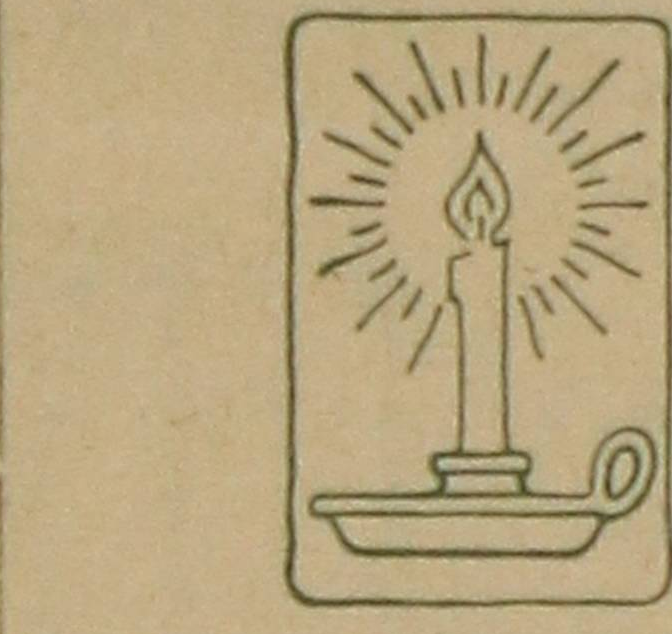
The test will be given in two sections. From 9 a. m. to noon, and from 1:30 to 4:30 p. m. This is not for pre-dental students. Those planning to take the test are asked to leave their names with the Dean's secretary.

Judge: Anything you say will be held against you.

Moron: Daa, Hedy Lamar.

Joe: What happened when the boarding house blew up?

Moe: Rumors are flying.



Hazel Hecht, Jim Van Camp To Have Holiday Wedding

A holiday wedding which will be of interest to many college friends is the forthcoming marriage of Miss Hazel Hecht to James Van Camp on Sunday, December 29 at 3 o'clock at the United Presbyterian church in Everett.

After January 5, the couple will be established at 720 North Pine street in Tacoma. Hazel, a member of Kappa Sigma Theta sorority, will graduate next June, while Jim, past president of Sigma Zeta Epsilon, completes his senior year this January.

PETERSON BROTHERS, INC.
Hay, Grain, Feeds, Garden and Poultry Supplies
Dutch Boy Paint and Kemtone
★
1002-1004 South K St.
Phone: MAin 0331

Howard Radios
Table Models and
Phonograph Combination
from
Table to Bed-Side to Console Models
OHISERS
3802 No. 26th PR 3801

★
We Have the Sweaters
Washington Sports Shop
918-20 Pacific Avenue, Tacoma

Merry Christmas and Happy New Year
Nelson Drug Co.
Prescriptions
2701 No. Proctor PR 4212

FARLEY'S florist
for that Special Corsage
6th & Anderson MAin 1129

Order Your PERSONAL CARDS AND STATIONERY NOW at ALLSTRUM PRINTING COMPANY
714 Pacific Avenue MAin 6768

FLOWERS
The Loveliest Gift
POINSETTIAS
the very essence of Christmas, in glamorous tune with the holiday spirit.
CYCLAMEN
Beautiful Combination Plants
Holly Wreaths—Mistletoe
Lovely Fresh Cut Flowers
Orchids—Camellias
Free Delivery
Franklin Florists
Two Smart Shops to Serve You
2620 North Proctor PR 5226, PR 6615 BR 6383 501 Broadway (In Crawford Sea Grill Building)

be introduced in chapel... 24, 26, and 27 will be required to

tuated to it, the prohibition has been lifted since the war

Hull... That... towels are not furnished in the boy's gym was re-

mediately The rest of the money will be banked and later divided into equal parts and spread over

that most of the college representatives I talked to were interested mainly in getting back to pre-war standards while our fac-

school year." Dr. Thompson trip, although su purpose, was no

CPS Cagers Open Conference Play On Road Loggers Battle Whitman, College of Idaho This Week

By Mal Stevens

This week, the Logger hoopsters are again in the eastern hinterland taking on their first conference foes of the season. Tuesday and Wednesday, the scanty-clads were scheduled to tussle with Whitman, and tomorrow and Saturday they move into Caldwell, Idaho, for a series with the College of Idaho Coyotes.

Stevens' Sportraits

By Mal Stevens

SHORT SHOTS . . . Joe Boyle, the Logger swimming star, finished a close second in both freestyle events in the meet against Washington last Friday, and is disgusted with himself, as the winning times of the races were six seconds slower than Joe's high school time . . . Rumor has it that the Varsity athletic awards are going to be different in this post-war sports program at *Sleepy Hollow* . . . oops, pardon, we mean CPS . . . That Logger rooting section at the PLC game was really a rousing flop . . . the only good thing about it was Colleen Kohler's *Ta-ra-ra-BOOM-de-ay* act . . . That statue of Liberty play of MacLaughlin, PLC, to Stivers, CPS, was the highlight of the ball game . . . Said MacLaughlin, the Fancy Dan of the Lute's, looked as if some pickpocket had stolen the family jewels when Stivers snaked the ball from him in the midst of one of his fancy exhibitions . . . Bobby Angeline has the best point-getting average so far, averaging 10 points per game . . . not quite as good as Bobby Fincham's 21 of last year, but the season is still young . . . Ron Button was up against the best center on the Pacific Coast (so they say) in Jack Nichols of Washington . . . Heard in the crowd at the PLC game: "There's Perrault and Van Camp again this year, didn't they start playing the first year Roosevelt was elected?"

Zetes, Delta Kaps Volleyball Winners

By Leo Butigan

With both teams finishing their schedules undefeated, the Zetes of the "A" loop and the Delta Kaps of the "B" league, emerged as intramural volleyball champions this week.

Never closely pressed during the season, the Zete's "As" produced five wins to gain their crown. Two teams are still tied for second spot in the "A" loop, the Chi Nus and the Delta Kaps, each with one remaining game to play. As yet, the Mu Chis have failed to win a contest.

It was a different story in the "B" race; the Delta Kaps were shadowed down to the finish line by the Zete "B" team, last Friday's battle between these two teams deciding the loop winner. The Indies and Chi Nu "B" squads have yet to break into the win column, with but one more game for each team.

As deadline requirements on *The Trail* are a good deal prior to publication date, scores for the Whitman contests are unavailable.

The squad left the campus late Monday afternoon. Coach Heinrich took a squad of 13 men, including Bobby Fincham, last year's leading scorer, but he will see little action as a result of a severely sprained ankle suffered in the University of Washington tussle last Friday. The rest of the players making the trip are Ron Button, Bob Rinker, Bob Angeline, Bill Stivers, Bill Richey, Ed Huntington, Don Hoff, Len Sawyer, Dick Salatino, Al Danielson, Harry Mansfield and Hal Wolf.

The last two squad members were brought up from Tom Cross' JV outfit to make the trip due to their superlative play in last Saturday night's reserve game against PLC.

Predictions on the outcome of the Northwest Conference race this year have been few, as there has been absolutely nothing to base prognostications on. Whitman has been shellacked by all of its pre-season big-time opponent such as Washington State, but does hold one verdict over Gonzaga.

There have been no press releases on the fortunes of the Coyotes this season, but they are expected to field a greatly improved team over the one of last year which fell before the mighty UBC team. UBC scored over one hundred points in each game they faced the C. of I.

The next chance to see the Loggers in action will be the first week after Christmas vacation when they meet the Linfield Wildcats in a two-game series here in Tacoma. Negotiations are under way for a return game with the U. of W. here in Tacoma sometime in January.

HOW THEY'RE SCORING:

Each week, *The Trail* will keep the basketball fans posted on the scoring of Logger hoopsters. Total points for the five games played are as follows:

Bill Stivers	41
Ed Huntington	35
Bob Angeline (3 games)	31
Don Hoff	25
Ron Button	19
Bob Rinker	14
Len Sawyer	11
Jim Van Camp	10
Dick Salatino	9
Al Danielson	8
Bill Richey (2 games)	6

Pet Supply
Live Christmas Gifts
728 Pacific MA 1291

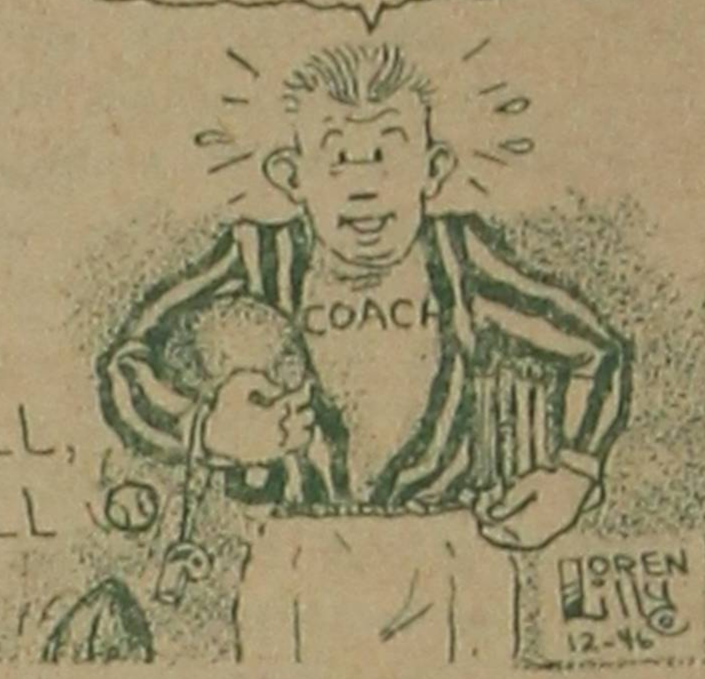
LOGGER CAGE COACH



John HEINRICK

POPULAR NORTHWEST SPORTS FIGURE, ATHLETIC DIRECTOR, COACH, BASEBALL, FOOTBALL AND BASKETBALL OFFICIAL!!

KEEPS ME BUSY, BUT I LOVE IT!!



Logger Hoopsters Defeat Lutherans 56-33 in City College Series Play

The offense was good . . . the defense was good . . . the Logger cagers were good . . . the result was good.

Employing a fast break effectively, the College of Puget Sound hoopsters charged to a convincing 56-33 win over Pacific Lutheran in the first round of their city titular series last Saturday night in the Lincoln high gym.

The game started slowly with the Lutes drawing first water on a free toss by Fuzzy Willis. Thereafter, it was all Puget Sound, however, the Glads led 7-6 at one juncture early in the contest.

The Loggers extended the gap to 22-9 on a pair of buckets by both Ed Huntington and Bob Rinker. PLC, with fine ballhawking by Ernie Perrault, closed the margin to 27-17 at the intermission period.

In the second half, the Lutherans suffered another basket famine, and the Sounders won in a walk. Huntington was high for the Loggers, collecting 14 points, while Bobby Angeline posted 10 counters.

The Puget Sound reserves dumped the Lute seconds, 45-37,

in the preliminary. Hal Wolf paced the Loggers with 11 markers.

Last Friday at the University of Washington Pavilion, the Lumberjacks were on the short end of a 64-38 count with the Washington Huskies.

Summaries:

		P. L. C. (33)			
		FG	FT	PF	Pts.
Perrault, f	2	2	5	6	6
Morris, f	0	0	5	0	0
H. McLaughlin, c	3	4	3	10	10
W. McLaughlin, g	0	0	0	0	0
Willis, g	1	1	2	3	3
S. McLaughlin	3	1	2	7	7
Neal	0	1	0	1	1
Ulrich	0	0	0	0	0
Mills	0	1	0	1	1
Gamm	1	2	3	4	4
Kauth	0	0	0	0	0
Dorothy	0	1	1	1	1
Totals	10	13	21	33	33

		C. P. S. (56)			
		P	F	S	Pts.
Hoff, f	3	2	3	8	8
Van Camp, f	1	1	1	3	3
Button, c	1	0	5	2	2
Angeline, g	4	2	3	10	10
Stivers, g	2	2	4	6	6
Rinker	2	1	3	5	5
Danielson	1	0	2	2	2
Huntington	0	2	4	2	2
Richey	6	2	3	14	14
Salatino	1	1	1	3	3
Sawyer	0	1	1	1	1
Totals	21	14	30	56	56

Free throws missed: Perrault 6, S. McLaughlin 4, Neal, Mills, H. McLaughlin 5, Gamm 2, Hoff, Rinker, Danielson 2, Richey, Huntington 2, Salatino, Angeline, Stivers 2.

Logger Swimmers To Meet Stadium

Beaten in their initial start last week against the University of Washington "B" team, the College of Puget Sound swimmers will be out to break into the win bracket Friday afternoon when they meet Stadium high school in the latter's pool.

Last week, the Huskies scored a convincing 49-35 victory over the Loggers. Ray Fredericks and Don Thornhill took the only first for the locals, winning the 50-yard freestyle and fancy diving, respectively. Joe Boyle and Fredericks each scored six points for the Loggers.

The Stadium meet this week will start at 3 p. m. and Coach Wally Streeter urges everyone to attend and cheer his team to victory. There is one catch—Streeter is also coach of the Stadium squad.

Summary of events:

- 300-yd. medley relay—White, Eberharter, Denning, 3:24.2.
- 220-yd. free style—McArthur (U.W.), Boyle (CPS), Regan (U.W.), 2:30.
- 50-yd. free style—Frederick (CPS), Laurence (U.W.), Denning (U.W.), :26.8.
- Fancy diving—Thornhill (CPS), Newton (U.W.), Turcott (CPS).
- 100-yd. free style — McArthur (U.W.), Boyle (CPS), Frederick (CPS), :57.5.
- 150-yd. back stroke—White (U.W.), Baldwin (CPS), Evans (U.W.), 1:48.2.
- 200-yd. breast stroke—Hill (U.W.), Massie (CPS), P. Diamond (CPS), 2:37.4.
- 440-yd. free style—McKay (U.W.), D. Diamond (CPS), Reynolds (CPS), 6:56.7.
- 400-yd. free style relay—U. of W. (Regan, Laurence, McArthur, Hill), 3:55.

Gym Shorts

By Laura Alm

This season's inter-sorority games went along at full speed. The last game was played Monday, December 16. The comment has been made that the girls fought instead of playing. It was just good team spirit that made them behave like that.

The Gammas are this year's champions, winning all four games.

Skelly's Ski Shop

Skis, Boots and Poles for Rent
REPAIRS AND METAL EDGES INSTALLED
OPEN EVENINGS until 8 p. m.
PR 7223 2215 No. Stevens

Fulton's Bakery

2813 6th Avenue
MAin 9722

For Quality and Wear on the Campus
Have Your Shoes Repaired at

Proctor Shoe Repair

3817 1/2 North 26th
All Work Guaranteed

Schaffer-Vycital & Hauser

Watchmakers and Jewelers

2706 No. 21st

PRoctor 4242

Our Sincere Wishes for the Coming Season

Charleston's Grocery

915 No. L PR 9415

Fresh Fruit — Groceries
Meats — Beverages

8 to 8 Except Sundays



"He's been from kindergarten through college twice, but refuses to graduate 'til his Reynolds Rocket pen needs refilling!"