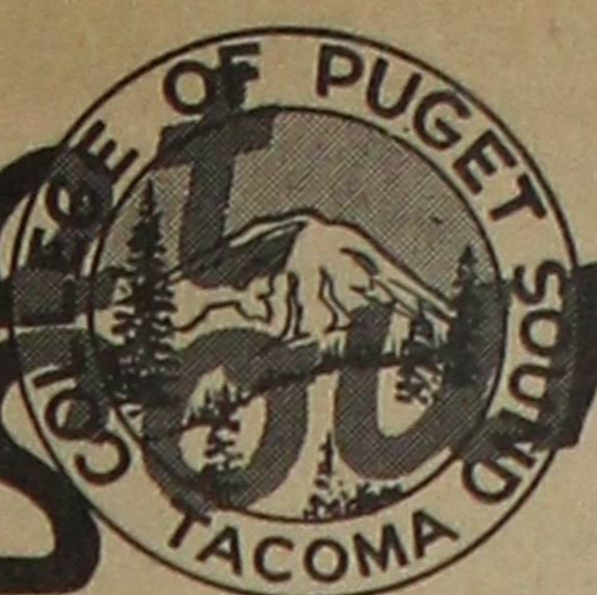


# THE Puget Sound TRAIL



1946-47 — No. 11

COLLEGE OF PUGET SOUND, TACOMA, WASHINGTON

Thursday, December 12, 1946

## 1700 Attend Performance Of 'Messiah'

Approximately 1700 persons attended the presentation of Handel's "Messiah," under the direction of Professor Clyde Keutzer, head of the music department, last Sunday afternoon in the Jones Hall auditorium.

Another 700 persons, who returned to their homes, preferred listening to the performance over their radios to standing in the already crowded halls.

Participating were four soloists, a 30-piece orchestra, and the choirs of First Baptist, Immanuel Presbyterian, Epworth Methodist, Mason Methodist, and First Methodist churches, and the Adelpian Concert Choir of CPS.

Miss Erla Mae Cramer, soprano, and Mr. Ivan Rasmussen, bass-baritone of the college music faculty; Mrs. Vera Wollenweber, contralto, and Mr. Gene Koll, tenor, both of Seattle, were the featured soloists.

"The choirs have voted to make this an annual affair and we hope someday to have the facilities to seat everyone comfortably," commented Professor Keutzer. "I want to thank all those who took part this year—they were wonderful!"

"The Knights did a fine job of ushering and the Spurs' Christmas decoration added a lot to the festive atmosphere. Both groups have my great appreciation," he concluded.

## Orchestra to Make First Appearance At Madigan Hospital

The first appearance of the entire CPS orchestra will be a concert on Monday, December 16, at 8:00 p. m., at Madigan Hospital. Approximately 60 musicians will present a one-hour concert featuring Miss Erla Mae Cramer, soprano, as soloist.

The selections presented during the evening will include the "Don Giovanni Overture" by Mozart, three selections from the "Nutcracker Suite" by Tchaikovsky, "Cantique du Noel" by Adolphe Adams and "Silent Night" by Franz Gruber (two vocal solos by Miss Cramer), three selections from Brahms, excerpts from Haydn, Dave Rose's "Our Waltz" of the contemporary field of music, "Peter and the Wolf" by Prokofieff, a vocal rendition of Irving Berlin's "White Christmas" by Miss Cramer, and "A Christmas Fantasia" by Grossman as the finale.

### Chapel Box

Monday, Tuesday, Dec. 16, 17—Indefinite.

Wednesday, Thursday, Dec. 18, 19—Both chapels to be combined in Friday chapel.

Friday, Dec. 20—All-college presentation of Christmas Carol.

## Battin Brings Back Bacon

By Lyle Lindelien

CPS women can out-talk the men! This was demonstrated last week at the Western Association of Teachers of Speech forensic tournament at San Jose, California. All honors, but one, were won for the Maroon and White by girls.

Yvonne Battin, a freshman and a pledge of Alpha Beta Upsilon, brought back the only "bacon," a first place trophy in women's oratory. Louise Kipper took second place in women's extemporaneous speaking. Louise, with her debate colleague, Harriet Fiske, placed third in senior women's debate division. Bruce Parker, the lone man to capture honors, took fourth place in after-dinner speaking.

The tourney, which lasted three days — Nov. 25-27, was well attended by 14 CPS debaters. Over 400 speakers from colleges in nine western states participated in the contests.

During this month and January, the forensic squad will warm up on the question for next spring, in a series of forum discussions with the University of British Columbia. The question is: Resolved, that labor should be given a direct share in the management of industry.

## Student Cooperation Imperative If Chapel Situation Improves

EDITORIAL

A situation different from that of previous years is faced by the college this year.

Always before the whole student body has attended the same chapels. This automatically eliminated outside disturbances while chapel was in session.

This year, with half of the students in chapel and the other half roaming the halls, running up and down the stairs and calling to each other over the general confusion, a serious problem confronts the administration and the students.

Chapels form a definite part of the educational program of CPS, as well as contributing to the spirit and tradition of the college. Their effectiveness is marred by the needless noise in the halls during the half hour periods.

Would a reasonable consideration for the chapel speakers and their audiences be too much to ask of college students?

## Registrar Attends Alum Conference

Richard D. Smith, registrar, is attending the Alumnus Association convention at Cleveland, Ohio, this week. Mr. Smith, himself a CPS graduate of 1936, is chairman and representative of District No. 8 of the association, which includes several western states.

At the convention, plans and new ideas are exchanged between representatives of the various districts, this being the first meeting in four years.

He is expected to return by plane at the end of this week.

## CPS Annual Christmas Vesper Program Is Sunday in Jones

### Who's Who Names 18 CPS Students

Fifteen CPS seniors and three juniors were elected to appear in the national publication, *Who's Who in American Colleges and Universities*, this year.

They are Beatrice Young, Polly Packard, Betty Jane Cappa, Bob McNary, Inez Doherty, Louise Kipper, Mary Rough, Elizabeth Anderberg, Bill Causin, Irene Fearn, Phil Garland, Carol Hamilton, Janice Lindeman, Ralph Lundvall and Jing Ho Ling.

The juniors are Carol Todd, Troy Strong and Rosa Mae Monger.

For personal interviews with each of these students see next week's "Trail."

## College Press Group Elects Annual Editor

Elizabeth Anderberg, CPS senior and editor of *The Tamanawas*, was elected secretary of the newly-formed Northwestern Intercollegiate Press Conference, which held its organization meeting at Western Washington College of Education in Bellingham last Friday and Saturday. Dave Parker also attended, representing *The Trail*.

Purpose of the conference is to promote better relations between the smaller colleges of the Northwest and to exchange ideas and information for the improvement of college publications.

Conceived in 1941 by the journalism department at WWCE, the conference met once, to which four colleges sent delegates, but with Pearl Harbor and a government decree prohibiting extra-curricular activities, it ceased to function.

## "Concerettes" to Be Given In College Halls December 18, 19

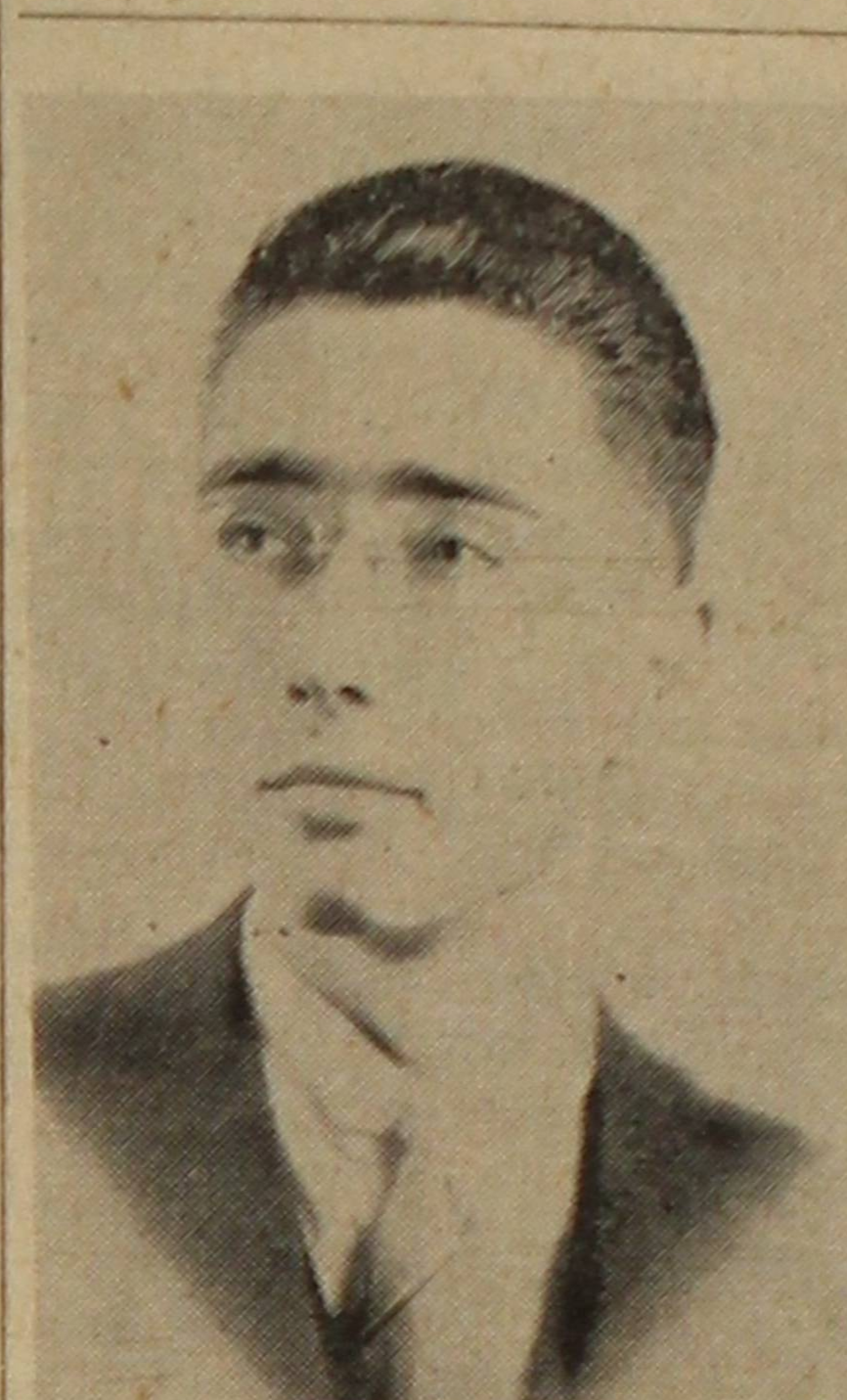
"Concerette," a new word in musical circles recently coined by Prof. O'Connor, describes his version of an informal presentation of musical numbers of a classical nature. Consequently, he has so named the Yuletide atmospheric music which will be presented in Jones Hall and Howarth Hall on December 18 and 19, by the CPS concert band, the Male Chorus under the conductorship of Mr. Ivan Rasmussen, and the Women's Chorus directed by Miss Erla Mae Cramer.

The half hour "concerettes" will be presented at 10:20 a. m. and 1:15 p. m. in Jones Hall on Wednesday and in Howarth Hall on Thursday, to enable the majority of the student body to enjoy them. The orchestra will center around a huge Christmas tree in the hall decorated by the International Knights and the choruses

## Music, Dramatics Departments Will Present Dickens' "A Christmas Carol"

Highlighting the traditional Yuletide celebration at CPS will be the annual Christmas vesper program in the auditorium of Jones Hall, next Sunday afternoon at 4 o'clock.

For the third year, the music and dramatics departments are combined to present Dickens' *A Christmas Carol* in a special adaptation of this 103-year old classic by Martha Pearl Jones, head of the dramatics department.



MARSHALL CAMPBELL

### Campbell To Repeat Role

Also for the third successive year, the production will feature Marshall Campbell in the lead as the villainous Scrooge. "He makes such a wonderful Scrooge," states Miss Jones. Marshall, a junior, is majoring in music. He will be remembered for his portrayal of the South American Indian in the Homecoming play.

Providing background music and Christmas carols will be the Men's Collegiate Singers, under the direction of Mr. Ivan Rasmussen, and the Women's Collegiate Singers, directed by Miss Erla Mae Cramer. Several singers from the two groups also take part in the church scene of the play.

### "Carol" To Be Given Three Times

The *Christmas Carol* will be presented three times this year. The first presentation will be next Friday afternoon at 3:30 in Jones Hall auditorium for the high schools of Tacoma. Again for the vesper program, and then for the students of the college on Friday, December 20, at 11 a. m.

The cast includes Sheila Lamar as the reader; Ebenezer Scrooge, Marshall Campbell, Bob Cratchit, his clerk, Willard Gee; Fred, his nephew, Norman Willard; the Gentleman, Arthur Hansen; the ghost of Jacob Marley, William O'Connell; Spirit of Christmas Past, Ruth Heggerness; Spirit of Christmas Present, Inez Doherty; Spirit of Christmas Future, Bonny

(Continued on Page 2)

## TB League Opens Drive on Campus

Small bangles in the form of the familiar red Tuberculosis League cross will signify the contributors to the Pierce County Tuberculosis League Christmas campaign, which began here yesterday.

Tables and booths will be found in lower Jones Hall and the SUB for contributions, states Rosa Mae Monger, head of the CPS campaign.

"The amount given is immaterial," says Rosa Mae, "but it is expected that each and every student will give some contribution to a very worthy cause."

The money will be turned over to the Tuberculosis League and will be added to the amount raised in the sale of Christmas seals.

## Ski Club Elects Church To Replace D. D. Rosellini

At a December 10 meeting of the Ski Club, Bob Church, formerly vice president of the organization, was elected president to replace D. D. Rosellini who resigned from his position.

A temporary meeting time was set for Mondays at four o'clock.

It was announced that the Milwaukee Ski Train will begin to run on December 28 to the Snoqualmie Ski Bowl. The train will leave at 7:30 a. m. and the price of a round trip ticket will be \$2.09.

All persons who have room for riders and all persons who wish rides to go skiing, are urged to contact Ken Hoggatt.

### Watch For . . .

Dec. 13—Band and Marching Unit Party.

Dec. 15—Vesper Service.

Dec. 20—Dickens' Christmas Carol.

Lambda Sigma Chi Dance. Sigma Zeta Epsilon and Kappa Sigma Theta Pledge Dance.

Dec. 21—Vacation Begins at noon.

### Annual Needs Help

Anyone interested in working on *The Tamanawas*, the CPS annual, is invited to contact Elizabeth Anderberg, editor, or Patricia Mason, business manager. Help in make-up, picture appointments and advertising solicitors are especially needed.

Hultgren. That clean towels are not furnished in the boy's gym was re-

mediately The rest of the money will be banked and later divided into equal parts and spread over

that most of the college representatives I talked to were interested mainly in getting back to school year."

Dr. Thompson's trip, although su-



## Where Does It Go?

"Where does the money go?" is the question asked by everyone in these days of inflation and skyrocketing prices, and CPS students are doing their share of the asking.

At the practice basketball game on Monday last week, students were required to pay 30 cents admission in addition to presenting their ASCPS cards. This charge was made because the team the Loggers played was a professional team and the money was used to pay this team. So much for one of the questions involving our dollars.

Another point not quite so easily explained is: Why do we have to rent our own buildings?

The "Sox Dance," scheduled to follow the PLC game just before Thanksgiving vacation, had to be cancelled because the college organization which planned it was informed at the last minute that the use of the gym would cost \$25.

If heat and light for approximately 2 hours costs \$25, we can easily see where our \$125 tuition and \$10 ASCPS fees per semester are going.

## Vicious Circle Keeps CPS Sad Sack Dizzy

Some of our professors are certainly making sure that we get our money's worth.

Not satisfied with giving us 50-minute periods for our tuition, they give us 55 minutes of their time each day.

There's just one catch. Try to get to your next class on time!

After wilting under the annoyed glares and the disgusted lectures of a punctual professor, being kept in his class after the bell rings, and repeating this process two or three times a day, the student feels like the Sad Sack of CPS.

It is rumored that certain professors lock their doors against the panting late-comers and then keep the rest of the class for three or four minutes after the dismissal bell.

Chapel doors are closed on students who are not excused from their second period classes on time.

What is the hapless Sad Sack going to do?

## Axe Me Another

The wind and the rain howled around the toy factory one dark winter's night, and inside the machines were at a standstill. The manager rushed up to one of the workers and asked, "Why aren't you turning out your regular quota of toy animals?"

"I wouldn't turn a dog out on a night like this."

Heard in the dorm: "Is this dance formal or can I wear my own clothes?"

Downstairs: "Didn't you hear me pounding on the ceiling?"

Upstairs: "Oh, that's all right. We were making a lot of noise ourselves."

"They say that brunettes have sweeter dispositions than blondes, but I don't think so. My wife's been both, and I haven't seen any change!"

Thermometers are not the only things that are graduated and get degrees without having brains!

## Off Beat

BY THE EM CEE

Making their debut next Sunday are the Men's Collegiate Singers under Mr. Rasmussen, and the Women's Collegiate Singers under Miss Cramer. These choruses will appear with the Campus Playcrafters when the curtain rises on the dramatic and music departments' annual presentation of Dickens' "A Christmas Carol." Next Monday night the choruses will sing from the balcony of the Union Depot as part of the pre-Christmas Travelers Aid entertainment. While traditional carols form the major portion of the singing, the tableau effect on Sunday and the balcony effect on Monday are both highly impressive. The girls, of course, are singing in chapel this week, but their best music will be next week when they are surrounded by the male chorus.

Sectional rehearsals have been doing wonders for the band lately. This new system calls for a different group of instruments to practice each noon so that it may become an integral part of the whole band.

If things go hard during a regular rehearsal, Mr. O'Conner has only to say, "We'll work that out in sectional rehearsal." So add that phrase to your list of pet expressions that come from the mouths of professors.

## The Puget Sound Trail

Established September 25, 1922

Published weekly During School Year

Official Publication of The Associated Students College of Puget Sound

Entered as second class matter at the Post Office in Tacoma, Washington, under the Act of Congress of March 3, 1879.

Subscription price 75 cents per semester; \$1.00 per school year by mail.

Member Associated Collegiate Press

EDITOR	LOIS PHILLIPS
ASSISTANT EDITOR	DIXIE JAMES
BUSINESS MANAGER	JOY MOBERG
News Editor	Dave Parker
Sports Editor	Clay Huntington
Society Editor	Donna June Bennett
Feature Editor	Mary Jackson
Reporters	Ruth Behrens, Leo Buttigan, Marshall Campbell, Neva Iverson, Mary Jean Kean, Zaida Lay, Lyle Lindelien, Gwen Roberts, Marjorie Smovir, Frances Swanson, Mal Stevens, Harriett Warne, Bob Winskill, Bill O'Connell,
Cub Reporters	Barbara Breazeale, Beth Davies, Diane Jensen, Leonard Docherty, Jack Erke, James Johnson, Nadine Kensler, Don Leonard, Betje Liljaqvist, Marcella Morton, Peggy Rough, Doris Rutherford, Don Thornhill, Laura Alm.
Ad Manager	Dorothy Rudolph
Ad Solicitors	Ralph Haggstrom, Ruth Potter, Marcella Morton, Glo Gleason
Circulation Managers	Lois Vick, Vernetta Harvie
Faculty Adviser	Margaret F. Whittlesey

## Letter to the Editor...

"Lost, one overcoat" — that's what a notice reads on the dean's bulletin board. "Lost" in this case is just a pretty name for "stolen."

A trusting student hung his overcoat in the basement men's coat room, went to class, and when he returned his coat was gone.

Is this an example of "learning good government" that our college is dedicated to? Thievery is as old as time, but let's not let it happen here.

### Two Whole Crackers

Anyone who eats at the SUB knows that soup is on the noon menu every day. Now, I like soup and I like crackers with my soup, two whole crackers, just for me!

It doesn't balance—a large bowl of soup with only two crackers. It's like trying to paint a battleship with a gallon of paint. The problem I face every day is: Should I take normal bites of cracker and have the last half of the bowl without crackers, or should I nibble on them and make it come out even?

This is a pressing problem, but I think I have a solution: Give us three crackers.

Dale Frost.

## More About Christmas Carol

(Continued from page 1)

Steele; Fezziwig, Scrooge's former employer, Arthur Campbell; Scrooge's fiancée, Kerttu Kahn; Mrs. Field, Scrooge's niece, Maisie Harold; Mrs. Cratchit, Irene Fearn; Martha Cratchit, Elizabeth Anderberg; Peter Cratchit, Bruce Rector; the small Cratchits, Carolyn Keutzer and Marylou Lamar; Tiny Tim, Larry Heggerness.

### Advertising Committee

Advertising is under the direction of Barbara Rowe, Gretchen Swayze, Jackie Gibson, Maisie Harold, Bernice Barton, Inez Doherty and Miriam Manke.

Scenery and stage workers are Barbara Rowe, Bonny Steele, Harmon Weston and Arthur Hansen.

The regular Campus Playcrafters crew includes: Robert Lyon, student manager and assistant on lighting; Ed LaChappelle, lighting technician; Harvey Wegner, stage manager; Kerttu Kahn, posters.

The make-up staff includes Juanita Baumgartner and Luba Ostfichuk.

The property committee is comprised of Carol Todd, Jeanne Miles and Sally Wilson.

### Truthful

Fisherman: It was that long . . . never saw such a fish in my life.

Friend: That, I can believe.

## Seed Pods Hold Esthetic Values For Art I Students

By Barbara Breazeale

Have you been seeing students dashing about the campus, picking up weird objects and exclaiming, "Isn't that interesting?" Or seen these same students climbing trees to obtain seed pods? Don't be alarmed, they haven't lost their minds, they're just members of the Art I class under the direction of Miss Frances Chubb and Mr. Melvin Kohler.

The enrollment in Art I was so large it has been divided into two sections, according to the previous art experience of the students. Both groups have been forming three dimensional abstract designs out of everything from construction paper and textiles to ping-pong balls.

In one section of this Art I class you can hear Carroll Dunne sighing, "If only I had an inspiration." Kathie Shults happily pastes items together while Luba Ostfichuk queries, "What is it?" Constance "Kaiser" Eldridge turns out assignments on an assembly line basis while the class members in general beats their heads for an enlightening idea. Perhaps a genius will emerge from this class. Who knows?

Hanging from the ceilings in art lab are three-dimensional designs, purely abstract but somehow vaguely familiar. Along the walls are charcoal drawings of the impressions students received from two musical selections and also sketches of the students' various experiences. If you would like to see the art classes' work, the welcome mat is always out, according to the teachers.

### Kahn Takes Indes Office

Kerttu Kahn was elected the new vice president of the Independents at the last meeting of that organization to replace Bob Huston who resigned from his office.

Kerttu, a senior, is the president of Otlah, senior women's honorary, and a Campus Playcrafter. She served as vice president of her class last year.

### UN Veto Question on

#### Youth Forum Next Week

"Shall we or shall we not retain the veto in the Security Council (of U.N.)" is the question that will be discussed by three CPS students next Wednesday evening on KMO on the Youth Forum of the Air. The broadcast is listed for 7 p. m.

Scheduled to participate are James E. Johnson and Peter Rex Adkins.

### ★ Seasoned Timber . . .

## Mechanical, Business Worlds Recognize Joy

"Seasoned Timber" may well be applied to this week's senior, Joy Moberg, who, in addition to being a thoroughly seasoned CPS "Logger," is a timber expert by virtue of her occupation as a part-time employee at the Weyerhaeuser Timber Company. (It being against the policy of *The Trail* to print free advertising, we hope she doesn't mind this



Weyerhaeuser plug too much, since she is business manager of this publication.)

Besides her position on *The Trail*, Joy has earned her sweater in women's athletics and was a member of the women's glee club last year.

Her efficiency in the business world is equalled only by her ability in the field of mechanics. An obstinate Venetian blind, a pencil sharpener that won't sharpen, or a typewriter that tabulates when it should hyphenate are no problems in any office where Joy is present. Her natural talent, plus a wrench, a screwdriver, and a hairpin, are the only tools she needs to handle all ordinary repair jobs.

A business administration major, Joy is minoring in psychology and economics.

Some people like dogs and some people like people and some people like hobbies. Joy likes peanuts. (She likes people, too, most of them, anyway.)

After she graduates in the spring, she plans to continue working at Weyerhaeuser's. (Oops, there's that plug again! Sorry, Joy!)

### Around the Globe . . .

## Politics and Food

By Peter Rex Adkins

"The roots of democracy, however, will not draw much nourishment in any nation from a soil of poverty and economic distress."

To me, these are the most significant words ever spoken by President Truman. He knows that we are trying to foster democracy in other nations of the world because we believe in our form of government as the "good life."

Since we have so much faith ourselves in this "American Way," we are surprised that other peoples should harbor any doubts concerning its worth. We are slightly perplexed, and at times furious, that other countries should sponsor or even tolerate communism, socialism or fascism. Haven't we fed them, clothed them and equipped their farms, factories, and armies?

The answer to this question seems obvious, and yet—I wonder. If we have really been so generous, it appears the whole world (as benefactors of our marvelous capacity for production) would want to live as we do, in freedom and plenty.

On the other hand, if we have not always fed the hungry, if we have given more credit to ourselves than we have done "giving," if we have played politics with food (as it appears the State Department now wants us to do), our neighbors can't be blamed for their hesitancy in following our lead. After all, a hungry man looks for food, not the right to vote.

## Dorm Diary

With Christmas just around the corner, the girls in Anderson Hall are casting covetous eyes on the fir trees in their front yard. The basement dormites are planning a Christmas party with the traditional gift exchange. The Christmas spirit also inspired Dede Johnson to get some horseshoes for her father and they are proving quite a burden to carry around.

Taking to the air for their trips home for Thanksgiving were a number of the girls on second floor including DORIS RUTHERFORD, B. J. MCCONVILLE, DOTTIE KOSTENBADER, and MARJORIE SMOVIR.

When POLLY PACKARD, LU RANDALL, BEA YOUNG, and JAN BLAKE came back from vacation, they found a very dead mouse in the lighting fixture. Was it starvation or electrocution?

PAT VOSHMICK has abandoned Kittredge in favor of home with her family, who have recently moved to Tacoma.



### Campus Chapter Of Chemical Group To Be Reactivated

Any student working for a major or a minor in chemistry is eligible to become a member of the new CPS chapter of the American Chemical Society, Dr. Fehlandt, professor of chemistry, disclosed this week.

The campus group was organized many years ago, and in 1939 was formally affiliated with the national society. During the war, however, enrollment dropped so much that in 1942 its charter was recalled. Now, Dr. Fehlandt feels that there is a sufficient number of students to warrant a new charter and the reorganization of the club.

The CPS chapter will be known as the Junior Affiliate Group of the American Chemical Society. To be accepted by the national society as a Junior Affiliate member, a student must be endorsed by a full-time member. This is usually done by one of the faculty. Membership entitles the student to the society's publication, and to attendance at the national and Puget Sound sectional meetings, which feature noted chemists from all parts of the country. The local group on the campus will have student speakers and occasionally outside speakers.

### Gibbs-Hunter Engagement Revealed

Eager, curious faces were turned toward Lois Lynch, Delta Alpha Gamma sorority president, last Wednesday as she read a poem from a box of candy, disclosing the engagement of Shirley Gibbs, daughter of Mr. and Mrs. H. H. Gibbs, to William Hunter, son of Mr. and Mrs. William Hunter.

Besides being the Gamma pledge mother, Shirley was the corresponding secretary of her sorority, and has belonged to Ski Club and W.A.A. Her major is home economics.

"We will be married sometime during spring vacation," Shirley revealed.

ASK FOR **Olympic**

Served by Your Commons Lunchroom

**MONTY'S CAFE**

606 South Kay

The place to MEET friends  
The good place to EAT  
Open Any Hour of the Day or Night

#### Christmas Suggestions

SMALL RADIOS  
RECORD PLAYERS  
ANNOUNCING — enlarging of our record department. Back numbers by Artie Shaw, Tommy Dorsey, Bob Crosby, Harry James and many others.

PROCTOR RADIO SOUND & SERVICE  
3313 No. Proctor PR 2567

### Band, Marchers Party Friday

A social event with a novel flavor is the Band-Loggerette party slated for this Friday evening, at 8:15 in the SUB. Those present will be the 45 band members and the 45 Loggerettes, who are each allowed to bring one guest.

Entertainment under the chairmanship of Jay Ball includes colored moving pictures of the football games in which the band and Loggerettes participated, tripping lightly to "step of days gone by" with commentary by Jay Ball, and exchange of 10-cent gifts under the auspices of an unidentified Santa Claus.

Decorations will be carried out in the Yuletide motif with a notable presence of mistletoe. Tables for four will be arranged around the floor in a manner enabling those present to partake of refreshments and entertainment simultaneously.

Following this program there will be a regular dance to numbers from the band's own record player.

Chaperones for the evening include Mr. and Mrs. John O'Connor, Mr. and Mrs. Clyde Keutzer, Mr. and Mrs. Raymond Vaught, and Dr. and Mrs. Robert Sprenger.

Loggerettes may purchase their tickets for the party from Bev Johnson, while band members may buy them from Jack Kennedy.

#### Trail Published Thursday

Because a Thursday publication is more convenient for both the printers and the staff, *The Trail* will appear on Thursdays henceforth.

The Trail Staff.

### Members Triumph, Nab Lambda Pledges

It was almost a success, but they finally did get caught. Yes, the Lambda Sigma Chi pledge sneak took place Wednesday, December 4, but the members finally found them at 9:45. The pledges and their dates were at Christ's Episcopal church having a great time eating and dancing until word spread around that the members were outside. After a little difficulty, the members managed to break in. Some of the methods were a little unconventional, but successful!

Dr. and Mrs. Robert Sprenger acted as chaperones, and Nita Hotes was refreshment chairman. Pledge mother for the group is Vernace Barton.

#### Kappa Phi Plan Yule Party

Kappa Phi's annual Christmas party will be held Tuesday, December 17, at 7:30. At this time the Kappa Phi candles will be distributed. These candles will be lighted Christmas Eve by Kappa Phi girls all over the world.

The Kappa Phi yearbooks, edited and illustrated by Lucille Randall, have been distributed to the members.

For Quality and Wear on the Campus Have Your Shoes Repaired at

**Proctor Shoe Repair**  
3817 1/2 North 26th

All Work Guaranteed

### FARLEY'S florist

for that Special Corsage

6th & Anderson

MAin 1129

### Kozy Cafe

Breakfast — Lunch — Dinner

For Your Enjoyment

A Complete Soda Line

WE SERVE OLYMPIC ICE CREAM

Open Monday Through Thursday, 7:30 a. m.—8 p. m.

Friday and Saturday till 2 a. m.

Sundays, 2 p. m. to 10 p. m.

3812 North 26th

PROctor 3355

Tune In On Wednesday Nights for your own

### CAMPUS RADIO THEATRE

Featuring talent from Tacoma High Schools and Colleges

SCHEDULE OF COMING PROGRAMS

December 18—Pacific Lutheran College

December 25—Lincoln High School

TUNE IN **KMO**

8:30 P. M. Wednesdays

REBROADCAST ON KTBI  
9:30 P. M. THURSDAYS

Sponsored by

**TACOMA CITY LIGHT**

### Theta Pledges Leave Members Holding the Feed Bag

"They've gone!" "They've sneaked!" "Of all the dirty tricks." "And we sit here feeding our faces!!!" These were the exclamations uttered by members of Kappa Sigma Theta when they found that the pledges, who were supposedly in the kitchen of Mr. and Mrs. C. E. McIntyre's home preparing dinner, had vanished from under the members' noses.

The pledges had scurried to the home of Mr. and Mrs. Callison at 1108 So. Fife on Wednesday, De-

ember 4, where they were having an enjoyable time playing bridge, gossiping and eating. Then a knock was heard at the door, which turned out to be a false alarm. It seems some pledge was playing pranks.

Then for a half hour the pledges waited in dark, gruesome silence. Finally it was 10:30 and Bea Rayno, pledge mother, called the SUB to tell the unhappy Thetas where the pledges were.

When the members reached the hide-out, the pledges greeted them singing the Theta song at the top of their lungs.

Miss Frances Chubb, art teacher, served as chaperone for the sneak.

#### Mason Joins Annual Staff

The appointment to the position of business manager for *The Tamawawas* has been given to Patricia Mason, a member of Delta Alpha Gamma sorority. "Pat" is a native Tacoman and has recently returned to the college as a member of the junior class after serving a year and eight months in the Waves. She is social chairman for the Ski Club in addition to her new position.

### Fulton's Bakery

2813 6th Avenue  
MAin 9722

happy toes BY DENA

IN COLORED SUEDE

COMES IN CELLOPHANE CASE

ALL IN ONE PIECE

UNLINED

SOFT AS A GLOVE

ADJUSTABLE TO FIT ALL FEET AND SIZES

LACES UP IN THE BACK

5 95

new n' different

Colors: Green Suede . . . Red Suede . . .  
Toast Suede . . . Blue Suede . . . Brown  
Suede . . . Contrasting Lacing.

**Perremiers BOOTERY**

915 Broadway

be introduced in chapter 24, 26, and 27 will be required to

stituted to it, the prohibition has been lifted since the war

Hultgren. That clean towels are not furnished in the boy's gym was re-

mediately The rest of the money will be banked and later divided into equal parts and spread over

that most of the college representatives I talked to were interested mainly in getting back to pre-war standards while our fac-

Dr. Thompson trip, although su purpose, was not

Donald... will... ing the... no de... lobable... indeberg... Andersor... center;... Hobbs, Lindebe... proving... will sh... a previo... think s... ucket." hitman... i confer... and th... y have... four ga... rd-fough... 10 D... By... ysic... elieved... y an ov... damage... research... Howarth... it. Dama... d at \$300... e. re start... id burne... ed. It is... m lack... aiting... classes... some... are the... qualy ho... is both... Shir Plast... l Table... set for... important... d accord... Seward... departm... ibes. An... t, physic... in helpin... d. Two... were dar... (An osc... ent for s... nges in... MOVIES... kly movi... events ha... will be hel... ig at 7:30... auditorium... two hours... ical, value. Th... it series... e 5 short... s will be... in in Jone... Prosp... Trip... ring, D... least a... Sound... n's recei... members... on, and t... Americ... f Method... n except... Dr. Thor... he said... and all th... and produc... school year... Dr. Thompson trip, although su purpose, was not



# Logger Hoopmen Will Face Huskies in Seattle

## CPS Opens City Cage Play Saturday Night Against PLC

By Mal Stevens

With the long road trip to Montana completed, the Logger hoopsters move into the University of Washington Pavilion Friday night at 8 p. m. for their biggest pre-conference test. If that isn't enough, the next evening they tangle with PLC in the Lincoln gymnasium.

With Bobby Fincham and Bobby Angeline on the sidelines, the Loggers dropped successive games to Montana, Gonzaga and WSC.

The scores printed in the local sports sheets were no indication of the type of ball the local boys played, as evidenced by the fact both Montana and WSC want games for next season. Gonzaga still has a game to play here in Tacoma this year.

The Loggers will be at full strength for the tilt with the Huskies, as Angeline's ankle is back in shape and the Fincham baby is due any day. Bill Stivers, who was tabbed by Jack Friel, WSC coach, the best he'd seen all year, will start at one of the guard spots. Ed Huntington, one of the high scorers on the trip, will be at the other guard slot. The two above-mentioned Bob will be forwards, with "Rangy Ron" Button working at the pivot position. Slated to see a lot of action will be veteran Jim Van Camp, the

### Puget Sound Hoop Schedule Complete

With four games under their belts, Logger hoopmen will start "hooping it up" in earnest this weekend, playing the Washington Huskies and Pacific Lutheran Glads.

The remainder of the schedule follows:

- December 13—Washington in Seattle.
- December 14—PLC at Lincoln.
- \*December 17-18 — Whitman at Walla Walla.
- \*December 20-21 — College of Idaho in Caldwell.
- \*January 7-8—Linfield at Tacoma.
- January 22 — PLC, to be announced.
- February 3—Portland University in Portland.
- February 5—Gonzaga, Armory.
- \*February 7-8—Lewis & Clark, here.
- \*February 11-12—Willamette, Armory.
- February 19—PLC, to be announced.
- \*February 21-22—Pacific U, Forest Grove.
- February 24—Portland, here.
- \*February 28, March 1 — UBC, Vancouver.
- March 3—PLC, to be announced.
- \*Conference Series.

### 100 Skiers Attend Outing at Mountain

Approximately 100 CPS ski enthusiasts attended the Ski-and Alpine-club sponsored outing held at Paradise, November 29. Clear weather and ideal snow conditions prevailed for the races in which Dick Simpson, Dave Darrell, and Newton Grimes clocked the best times. Both upper and lower lifts ran during the afternoon.

The traditional college ski outing will be February 22, when the intramural cup will be put on the block.

Several sincere resolutions against smoking were heard from the morning skiers as they plugged up the practice hills before the ski lifts began operation.

### 1965 Logger Hoop Prospects Bright

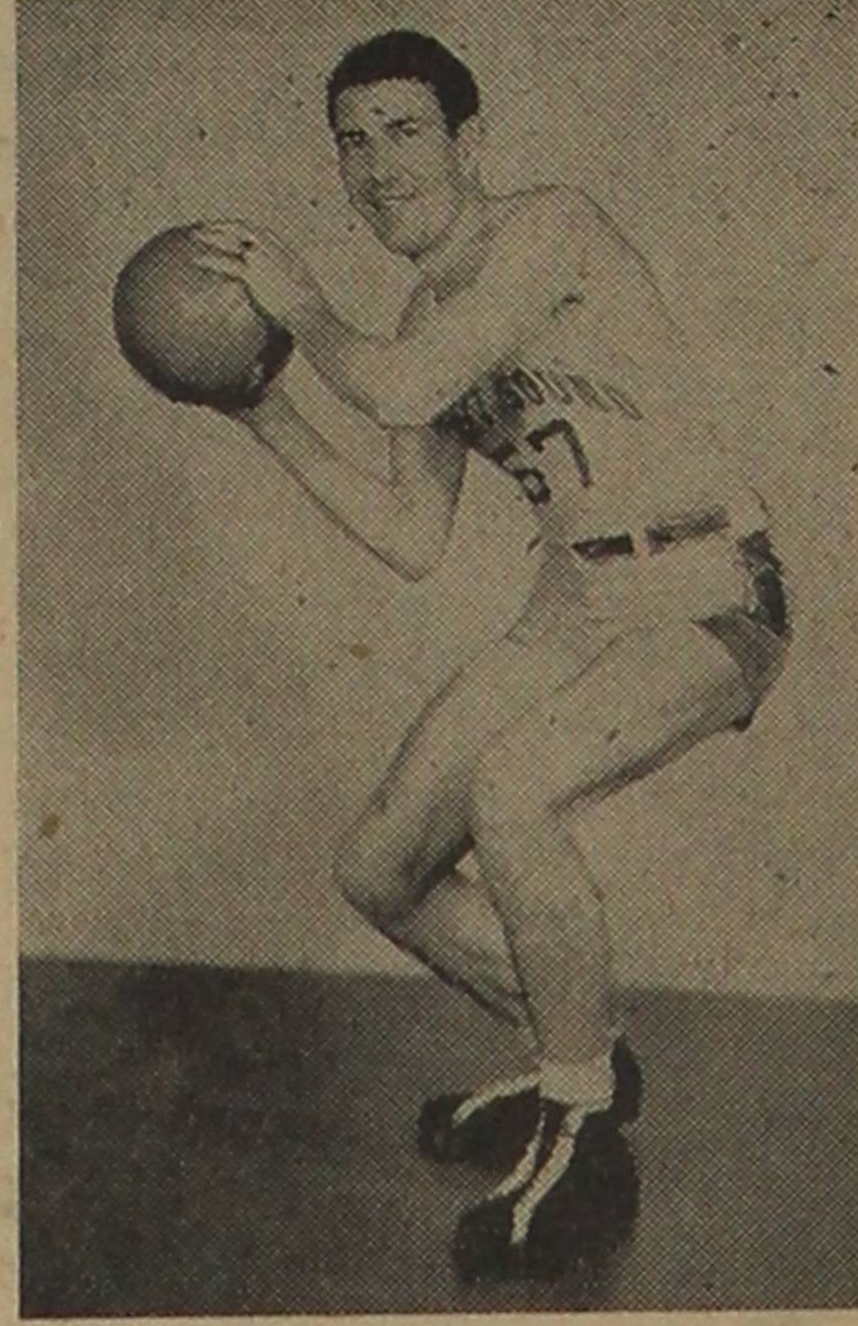
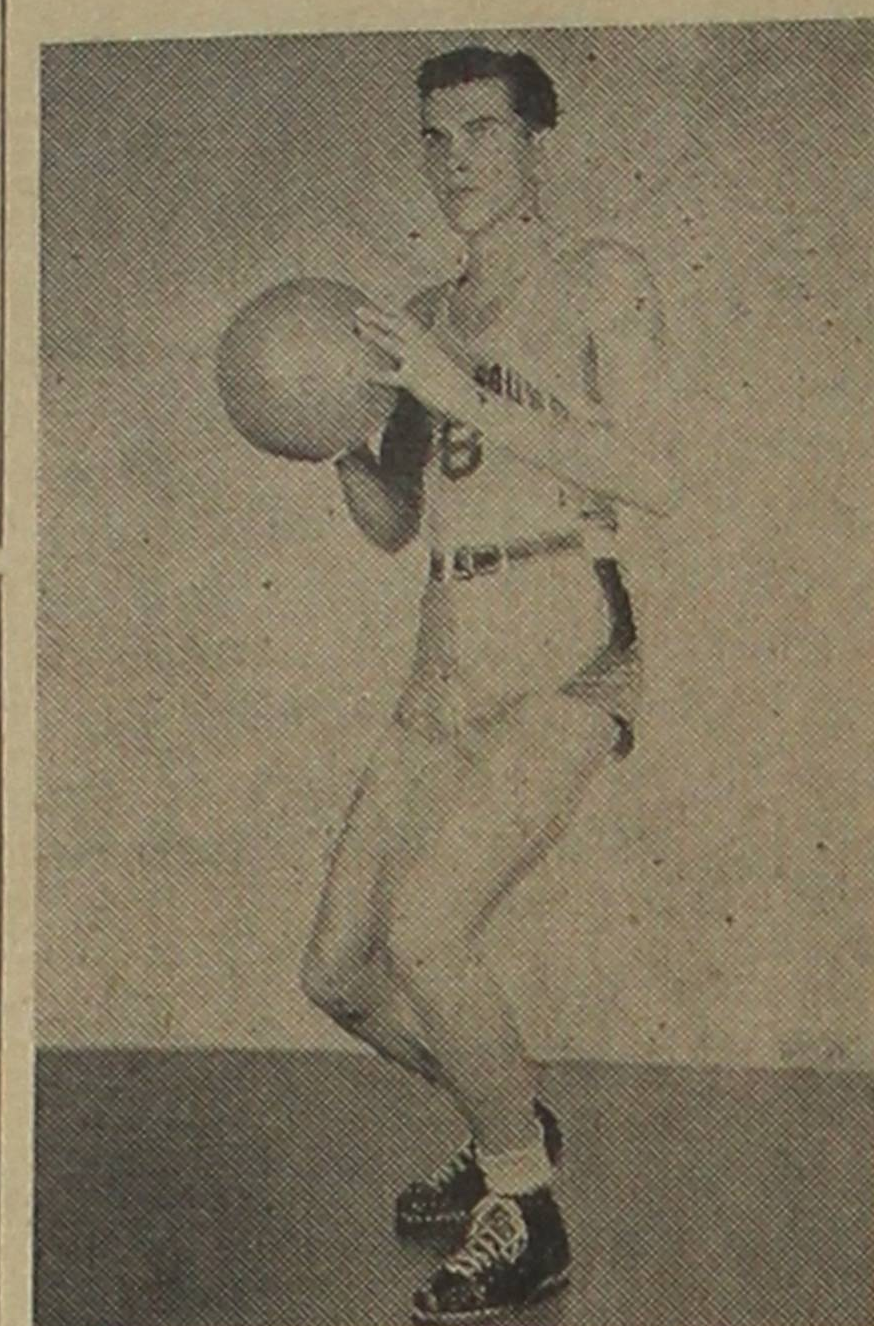
College of Puget Sound basketball prospects for the year 1965 appeared bright this morning following the arrival of another Fincham on the scene.

The long-awaited arrival, an eight-pound boy, was born in the wee hours of Wednesday morning. The entire Fincham family is doing fine, Bob included.

Wapato Whiz; Don Hoff, the Astoria, Ore., boy; Len Sawyer, the mighty mite from Puyallup; Al Danielson, letterman from years gone by; Dick Salatino, and the skyscraper of the outfit, Bob Rinker.

The starting lineup for the PLC contest on Saturday night will depend a lot on what happens in the Washington game.

From the latest reports from Seattle, the charge for the game will be six-bits. As everyone knows the Pavilion on the Washington campus is ideal for watching basketball. As one of the boys on the squad put it after the eastern trip, "We played in foreign country for three games without a soul rooting for us, it sure is going to be great to get a little backing for a change."



Among the players who will see action this week in the College of Puget Sound hoop squad are the two returning lettermen pictured above, Bobby Fincham, and Jim Van Camp, right. The Loggers play the University of Washington in Seattle Friday night and the Pacific Lutheran Glads on Saturday.

### Zete's Undefeated In Volleyball Play

Undefeated in both leagues, the Zetes are currently leading the intramural "A" and "B" volleyball standings.

The Zete "A" squad has posted two wins, while the "B" team has three victories. The Delta Kapps are also unbeaten in "B" play with 2 wins.

To date, a total of four teams have failed to break into the win column. The Indies and Mu Chi are trailing in the "A" circuit, each with a pair of losses. In the "B" wheel, both the Indies and Chi Nus have three straight defeats.

Standings for the first two weeks of play are as follows:

A LEAGUE	Won	Lost
Zetes	2	0
Delta Kap	2	1
Omicrons	1	1
Outlaws	1	1
Indies	0	2
Mu Chi	0	2

B LEAGUE	Won	Lost
Zete	3	0
Delta Kap	2	0
Omicrons	2	1
Mu Chi	1	1
Indies	0	3
Chi Mu	0	3

### Stevens' Sportraits

By Mal Stevens

**SHORT SHOTS** — Montana, Gonzaga and WSC coaches all said *Bill Stivers* is the fastest thing they've seen this year... Basketball squad has an organization within the squad called the ala Carte boys... the ball team is sweating out that baby as much as "Papa" Fincham is... With *Jim Van Camp* humming the wedding march and *Bob Fincham* practicing up on lullabys, everything is great with the hoopsters... *Vanishing Vic* vanished again in the Montana gym, remaining unconscious a few minutes after testing the strength of the wall with his head... CPS had a fair sized rooting section at WSC, comprised of Tacoma students... *Warren Wood* was named on the all-conference football team... *Bob Robbins* and *Jimmy Rice* missed the first team by one vote... *Ralph Rowe*, *Laverne Martineau* and *Dick Robinson* were named on the second team... fans, let's get over and see the swimming meet Friday afternoon and the basketball game that night.

### Logger Swim Team Starts

By Don Thornhill

Brushing superstition and jinx aside, the CPS swimming team will launch into their christening Friday the 13th at 3 p. m. in Seattle. "It will be the initial meet of the season for the Husky B squad, the first meet for the CPS squad," Coach Wally Streeter stated.

Under the practiced and watchful eye of the ex-Hawaiian swim coach, the splashers have been shaped into a smooth-functioning team.

"We are just testing our prowess on the "B" squad, and if we do well enough, CPS may take on the varsity at some later date," Coach Streeter disclosed.

Tentative swimmers making the trip are:

Freestylers: Joe Boyle, Don Adams, Ray Fredericks, Bill Chalk, Jim Reynolds, Ike Olson, Don Diamond, Gordy Rohrs.

Backstrokers: Doug Baldwin, Dave Rees.

Breaststrokers: Paul Diamond, Art Massie.

Fancy Diving: Ray Turcott, Don Thornhill, Jim Rumbaugh.

28

**VOGUE CLEANERS**  
For Neatness  
2814 Sixth Avenue

**HAMBURGERS**  
**REFRESHMENTS**  
at  
**PAT'S**  
**FOUNTAIN**  
**SERVICE**  
2710 North 21st

— SKIERS —  
Ski Sweaters by Catalina • Ski Sox, All Wool • Ski Mitts,  
All Leather • Cloth Lined Caps, Red, Blue & Navy  
**Jensen's Men's Shop**  
2605 SIXTH AVENUE

**Skelly's Ski Shop**  
Skis, Boots and Poles for Rent  
REPAIRS AND METAL EDGES INSTALLED  
OPEN EVENINGS until 8 p. m.  
PR 7223 2215 No. Stevens

**SKIERS!**  
AT LAST! A policy to take care of all expense caused by accident.  
—See—  
**BRAD BANNON**  
1119 Rust Bldg. BR 2229

**Schaffer-Lycital & Hauser**  
Watchmakers and Jewelers  
2706 No. 21st PRoctor 4242

Join in...  
have a Coke

BOTTLED UNDER AUTHORITY OF THE COCA-COLA COMPANY BY  
THE COCA-COLA BOTTLING COMPANY

Serve  
**Coca-Cola**  
at home  
5¢