

# THE Puget Sound TRAIL

THE PUGET SOUND TRAIL

Wednesday, October 2, 1946



## PEP RALLY TO BE FRIDAY

Car Parade, Bonfire, Dance, Highlights Of Rally To Inspire Team In Coming Battle With Bellingham

Starting with a car parade from downtown at 7:30 Friday night, a pep rally to inspire the CPS Loggers to "Beat Bellingham" in the first football game of the season will be held at the College, according to Ray Cason, cheer leader in charge of the rally.

### NIGHT CLUB

Director: Irene Fearn.  
Mrs. Brady: Beth DeMille.  
Ada: Mary Kinchloe.  
Dark Young Girl: Unassigned.  
Dol Faced Blonde: Unassigned.  
Amy: Joan Langmack.  
Vera: Mary Louise Moon.  
Sylvia: Beth McDonald.  
Grey-Eyed Girl: Unassigned.  
Babe: Betji Lilyquist.  
Babe's Girl Friends: Christy Walker, Laura Alm, Barbara Lorta.

### PERSIA PRESENTS

Directors: Maisie Harold, Mar-  
ian Manke.  
King: Howard Hitchcock.  
Princess: Unassigned.  
Chamberlain: Bruce Rector.  
Steward: Wayne Seaman.  
Chief Slave: Don Mack.  
Bandit: Stan Carlson.

### LONG DISTANCE

Directors: Carol Todd, Herman  
Weston.  
Arthur: Leonard Docherty.  
Joe: Unassigned.  
Brett: Frank Peterson.  
Hilda: Sammy Samuelson.  
Mary Lee: Ruthella Raver.  
Henderson: Hal Wolfe.

### EVENING DRESS

Directors: Elizabeth Anderberg,  
Art Hansen.  
Alice: Alice Collins.  
George: Pat Jennings.  
Geoffy: Richard Lewis.  
Sheila: Unassigned.  
Nellie: Unassigned.

A bonfire and program on the field between the gym and Howarth Hall will be climaxed by an introduction of the grid team, followed by an informal juke-box dance at the SUB.

### Paraders Will Chant

Chanting "Beat Bellingham or Bust," the paraders will drive up Broadway, St. Helen's, Division, 6th Avenue and Lawrence streets and meet at the College at 8 o'clock.

"Everyone is urged to decorate his car," explains Ray, who added that a five-piece pep band will be located at the head of the caravan to bolster the chanters.

"If you can't be in the parade, be sure to come to the bonfire anyway," he invites.

Drum majorettes Pat and Diane O'Connell will be stationed at the head of the parade.

### Program Highlights

A program of songs and yells led by cheerleaders Ray, Colleen Kohler and Harmon Weston and pep talks by Phil Garland, ASCP's president, and Coach Frank Patrick will be highlighted by the performance of a 15-piece pep band led by John O'Connor, CPS's new band leader.

"It'll be the most fun we've had since a chicken got loose at the Delta Kapp barn dance," comments Ray.

### First All-College Dance

The juke-box dance in the SUB, which is either date or no date, is the first all-College dance of the year. An admittance fee of 10 cents per person will be charged.

Chaperones of the entire affair are Professor and Mrs. Robert Springer and Professor and Mrs. John O'Connor.

Members of the International Knights will be present to line up cars, keep the bonfire burning and help with the dance.

## Dr. Dagfin Skaar To Deliver Second Lecture In Series

Dr. Dagfin Skaar, editor of a Norwegian underground newspaper, will deliver the second address in this year's series of world affairs lectures on Thursday evening, October 24, in Jones Hall.

Internationally known Dr. Carl Hambro is one of the many prominent speakers to be featured by the series. Ruth Bryan Rhode, who spoke at the school last year, will return with a lecture on the international situation. C. Langdon White, an authority on Latin America, and Senator Magnusson, who will lecture on the Pacific situation, are to be presented along with Mr. Mackenzie, Canadian statesman, as scheduled speakers.

Student tickets may be procured at \$1.25 each (one-half the regular price) from any of the members of the board of directors or from Troy Strong.

## Students Urged To Fill Parts In Class Plays

Ah! Where-for art thee Juliet!

Or Hamlet; or just any little Frosh who believe they are another Bette Davis, Clark Gable or Cass Daley 'in the making.' An urgent plea made by Martha Pearl Jones, Drama instructor, and directed towards the Freshman to provide talent for five excellent one-act plays, received a very poor turnout considering the large number of the "ex-little green hats" that parade the campus. Since much of the traditional campus initiation was by-passed this semester, Martha Pearl Jones decided to give aid in preparation for a good Frosh Jubilee. So far, many parts are still unassigned, so we hope this little article will give you moral support and direct you to Room J 212, where Miss Jones or the Play Production students will be more than happy to coach you in any part.

Plays under consideration at the present time, are:

### SPOT CASH

Directors: Bill O'Connell, Penny Veden Steele.  
Manager: Art Campbell.  
Scrub Woman: Shirley Taylor.  
Card Sharp: Unassigned.  
Blue Singer: Betty Lou Fyke.  
Beauty Parlor Operator: Elinor Nelson.

Dressmaker: Unassigned.  
Salesman: Unassigned.  
Doctor: Gordon Tronson.  
Racketeer: Unassigned.  
Bandit: Unassigned.  
Teller: Unassigned.  
Detective: Unassigned.

## Classroom Situation Drastic Cloisters Being Considered

By Mary Jackson

Curtained classes in the cloisters? Maybe the situation isn't that drastic, but it's a sure thing all the possibilities for classrooms inside the buildings are exhausted. And so are the students who have tried in vain to find some of their old haunts. The sad truth is that many of the familiar places have given up the ghost.

Where once the make-up and dressing rooms dwelt peacefully side by side, now in one corner we have Miss Cramer's sopranos, and in the other, the vociferous debaters. The first round is over and both are still in there fighting, but my money is on the sopranos.

Over in the SUB, eager young musicians labor over the history and theory of music in the little room where before only coats and hats relaxed. Back in the pre-peace days, an empty classroom could usually be found in the afternoon for a little private studying. Just try it now!

The art galleries were formerly located in the attic of Jones Hall. Now Professor Horn's piano studio and the orchestra room occupy the fourth floor, after a little sound-proofing was done. Music seems to

be the loudest of the arts. The invasion of classes into every nook and cranny: hasn't reached Anderson Hall yet, but just in case any crowded class is looking longingly at the lounge, the doors are carefully locked every night.

## Cards For Student Function Issued

Student body cards for admittance to student functions are being issued at noon from 12:15 to 1:30, according to Janice Lindeman, ASCPS secretary.

The cards, which may be obtained at a desk in lower Jones Hall, must be presented at the door when entrance to a game, play, or other college affair is desired. Students attending night classes only may secure their cards from 6 to 7 p. m. on Friday evening.

A new policy this year is that of selling cards to wives or husbands of veterans for \$5 (half price) which entitles the holder to attend all student functions but does not include the annual.

## Band In Initial Appearance At First Football Game Here

The flash of maroon and white will decorate Tacoma stadium on October 12 when the first College of Puget Sound Band will make its debut. The occasion will be the initial home football game of the season, with the CPS Loggers playing Pacific University from Oregon.

Leading the band in their drills will be the McConnell twins, Diane and Pat; Jeanne Miles; and Ray Cason, head drum major and cheer leader.

The band, which is the first in the history of CPS, numbers 35. Two-thirds of its members are freshmen. The armed services are well represented with one-half of the total band members ex-G. I.'s including the director, John A. O'Connor. The sophomores, juniors and graduate students are also represented.

The band is to be colorfully dressed in white sweaters with maroon band emblems and maroon and white rooster caps. The majorettes will wear white sweaters, skirts and boots.

Each home football game will be supplemented by this organization and at out-of-town games a pep band will supply support for the team.

When the football season ends on December 1, the band will begin practice on a concert to be given in the Spring Festival during the second semester.

## Chapel Seat Lists At Bursar's Office

Now when you cut they are going to know it! Yes, that's right. The lists of seats for all three chapels were posted Monday in the windows of the bursar's office. This means that every student has a definite place to sit at the two chapels he is required to attend. Attendance will be taken at all chapels.

The usual procedure for the chapel programs will be: the first one in the week for each group will have an outside speaker, a musical program or a drama presentation. The other one will usually be of a religious nature. When ever it is possible the same program will be given for all three groups.

### CHAPEL BOX

Wednesday and Thursday, October 5 and 6: D. Robert Smith, organist.

Monday and Tuesday, October 9 and 10: Not definite.

Wednesday, October 11: No chapel.

Thursday, October 12: Freshmen matriculation, all students attend.

Next Wednesday there will be no chapel either in the morning or evening. Instead all students will take part in the matriculation exercises for the freshmen during the Thursday, October 12 chapel.

### Radio Club Is Organized

The Radio Club is now being organized for all interested in any phase of this work. Meetings are held at 8:00 p. m., Thursdays.

## SOUNDing Off

By Troy Strong

Certainly the last few years have proved beyond doubt that the welfare of individuals and societies depends upon more than external developments in the world. It relies upon the inner balance which individuals are able to develop and maintain. The price of such a balance is only constant effort.

Many external changes have been made at CPS this fall, but if it is to be a happy campus community, we must all have a share in it. Each personality here is a part of the spirit of the College of Puget Sound, yet each of the 1,400 personalities is a different and a changing one. So now more than ever there must be the right combination of (1) a recognition of our own imperfection, plus (2) a vision of the perfection attainable.

We came here to learn! Well, in so doing, remember the statement of Halford Luccock: "We have learned in airplanes to fly like birds; and in submarines to swim under the sea like fish; all that remains is for us to learn to walk the earth like men."

### 1946 Annuals Available

Any of last year's students who haven't obtained their 1946 Tanager are asked to get them as soon as possible from the PUB, according to Bob Winkskill, last year's editor.

be introduced in chapel Feb. 24, 26, and 27 will be required to be introduced to it, the prohibition has been lifted since the war

Hultgren. That clean towels are not furnished in the boys' gym was re-

The rest of the money with banked and later divided into equal parts and spread over

that most of the college representatives I talked to were interested mainly in getting back to

school year." Dr. Thompson's trip, although suc-

THE PUGET SOUND TRAIL

September 25, 1922  
Established

During School Year  
Published weekly

OFFICIAL PUBLICATION OF THE ASSOCIATED STUDENTS  
COLLEGE OF PUGET SOUND

Entered as second class matter at the Post Office in Tacoma, Wash-  
ington, under the Act of Congress of March 3, 1879.  
Subscription price 75c per semester; \$1.00 per school year by mail.



Associated Collegiate Press

EDITOR ..... LOIS PHILLIPS  
ASSISTANT EDITOR ..... DIXIE JAMES  
BUSINESS MANAGER ..... JOY MOBERG  
SPORTS EDITOR ..... CLAY HUNTINGTON  
REPORTERS—  
News: Beth Davies, Mary Jean Kean, Betje Liljeqvist, Lyle Lindellen,  
Frances Swenson, Harriet Warne, Bob Winskill.  
Sports: Mal Stevens, Helen Caputo.  
Features: Barbara Breazeale, Marshall Campbell, Ray Cason, Neva  
Iverson, Mary Jackson, Zelda Lay, Marjorie Smovir.  
Society: Donna June Bennett, Aleatha Mae Dietrick, Diane Jensen.  
AD MANAGER ..... DOROTHY RUDOLPH  
Ad Chasers: Ruth Potter, Ralph Haggstrom.  
CIRCULATION MANAGER ..... LOIS VICK  
FACULTY ADVISER ..... MARGARET F. WHITTLESEY

"Ah, Ah, Ah! Don't Touch That Dial!"

At least once every year it becomes the duty of an editor to discourse at length upon the desirability and the values of school spirit. If you have come this far with me and don't have anything better to do, "don't touch that dial," listen to the voice of the School Spirit.

Now where do I go from here? Should I picture the Spirit wandering through the hoary halls of CPS, creating a mysterious lump in the throats of students returning to school after vacation?

Should I show him (or her) mingling with others of his (or her) kind in the drafty attic of the Conservatory of Music?

Well, I can see that I'm going to have to do this the hard way since the Spirit is not moving me.

The hard way, of course, is the repetitious way. You've probably heard, "What we need is school spirit around here!" as often as you've heard, "As plain as the nose on your face."

However, since the latter phrase was coined by the great bard, Bill Shakespeare, himself, maybe I can repeat the former.

School spirit fosters community spirit in the individual and true community spirit breeds world spirit. If world spirit doesn't spring from an institution of higher learning, where will it have its beginnings?

Besides, school spirit is a lot of fun. You'll be missing a good time if you miss the pep rally this Friday night!

Do You Walk To School?

Many CPS students come puffing in to their first classes 10 minutes late with the ruddy glow of outdoor exercise coloring their cheeks, adding to a general windblown appearance. "Do you walk to school?" they are asked.

The answer is sometimes: "No, but I have to park my car about six blocks from here."

Much of the undeveloped terrain surrounding the college is college property. Various types of vegetation abound in these vacant lots.

Maybe it would be a good idea if some of this spare jungle were removed to provide ample parking space for all.

Faculty Notes

Have you noticed the increasing interest in singing in the male members of our student body? Judging by some of our "whiskey tenors" and "bathtub baritones" we're not sure whether they want to cultivate their voices or the friendship of the new voice teacher, Miss Erla Cramer. However, if you've met Miss Cramer you couldn't blame them as she's a very charming and attractive girl — about 5 feet three inches tall and has beautiful honey blonde hair.

It is not at all surprising that she is such a fine voice teacher after knowing that professors Horne, Vought, Rasmussen and Keutzer, who are now members of our own faculty, were all at one time members of the Hastings College faculty in Hastings, Nebraska, where Miss Cramer got her start in life and attended high school

and college. By the way, she received her Bachelor of Arts degree at Hastings College and later received her M. A. at Columbia University.

Having many talents, Miss Cramer worked as a stenographer for the Harris Trust and Savings Bank in Chicago. Although she sang with the University of Chicago choir at the same time, she just couldn't get enough music to satisfy her desire for the stuff. So — well she's here anyway and she isn't teaching typing. One more item that deserves mention at this time is the fact that — hang on to your morale, boys — Miss Cramer is engaged to John M. Maxwell, an aeronautical engineer at the Douglass plant in Santa Monica, California, and he's also a singer. One more cheer for Miss Cramer — she likes Washington.

"Axe" Me Another

Positions Reversed

Mrs. (learning to drive): But I don't know what to do now.

Mr.: Just imagine that I'm driving.

Big Business

Jones: I expect a lot of dirty work when I start my new business.

Bones: Treachery, eh?

Jones: No, I'm opening a laundry.

Real Threat

Ham: With whom was your wife quarrelling last night?

Bo: Why, she was scolding the dog.

Ham: Poor beast! I heard her threaten to take the front-door key away from him.

Poor Noah

All the animals that went into Noah's Ark went in pairs except the worms.

How did the worms go?

They went in apples.

As You Like

A man went to see his girl to take her out to a show. She called out from upstairs that she wasn't quite ready. The man said, "We're in a hurry . . . can't you slip on something and come down?" So she slipped on the top step and came down!

It's A Woman's Privilege

A woman who couldn't read or write signed all her papers with an X. She was out of town for a long time and she had to come back to the bank to sign a paper. She signed it with a circle instead of an X. The bank clerk said, "You always signed your name with an X . . . why do you use a circle now?" The woman said, "I just got married."

Tit For Tat

Angry Woman Tenant: If you were my husband I'd give you poison.

Landlord: If I were your husband, I'd take it.

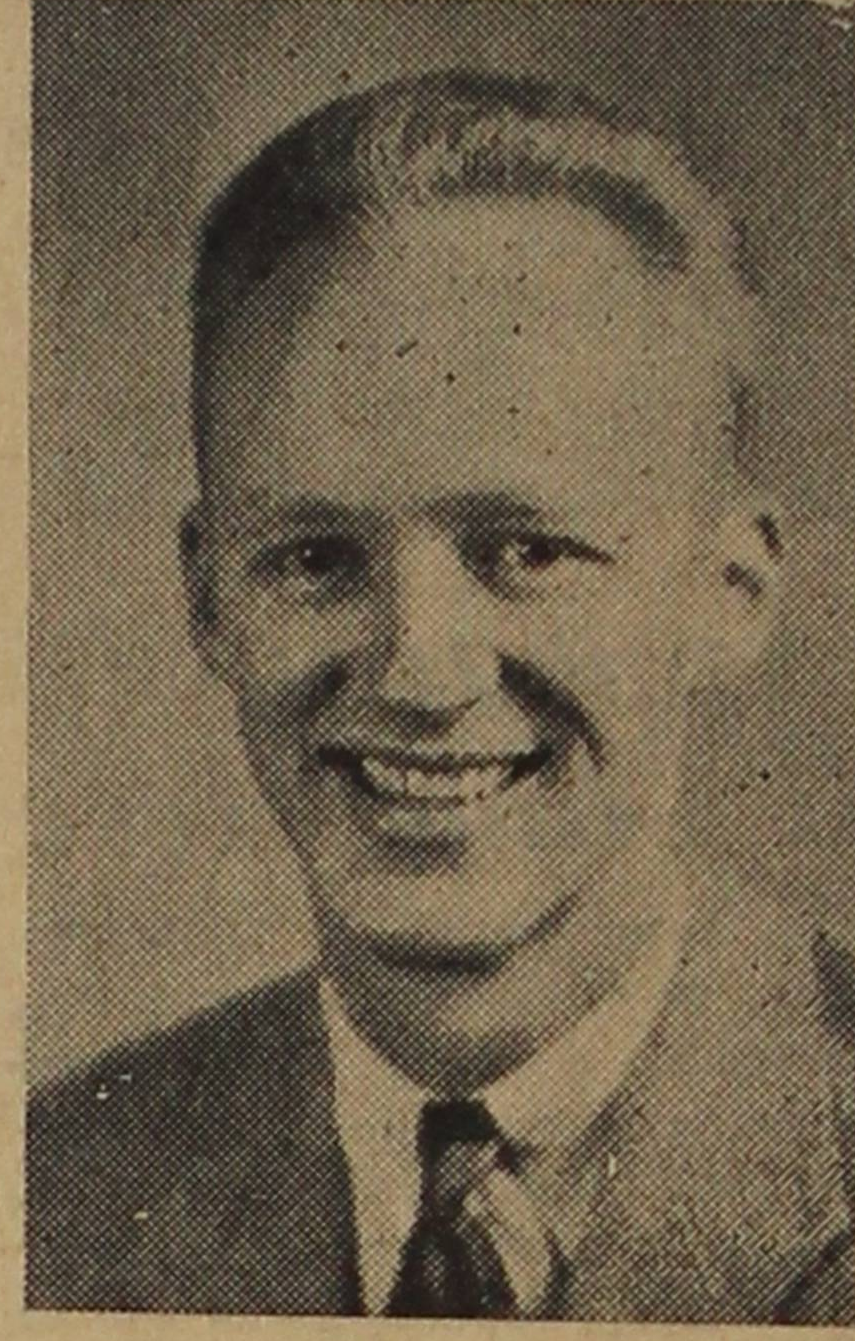
One In Every Crowd

"Mary, Mary, quite contrary, How does your garden grow?" With silver bells, cockle-shells — And one miserable petunia!

Seasoned Timber

It requires more than just a winning smile to govern students. Plenty of patience, energy, and good common horse sense are only a few of the necessary qualifications. Because he has proven himself to be that all-round "personality plus" fellow, Phil Garland was elected last spring by CPS students to assume the responsibility of ASCPS president for 1946-1947.

A tall blond with sparkling eyes and winsome smile, Phil may be seen almost any day, rushing hurriedly through the halls. Yes, he has more duties to perform than many of us will ever dream of having. Besides being CPS president, Phil is a member of International Knights and Alpha Chi Nu.



Phil Garland

After seeing CPS through a busy summer (during which he managed to pull down a straight A average, incidentally), Phil is now planning a new constitution to accommodate the increased enrollment. The former constitution was intended to serve only 300 students. Phil hopes that through hard work and the co-operation of the student body we may soon have an efficient student government in force.

Tacomans may proudly claim Phil as their own, for he was born

and raised in Tacoma, having graduated from Stadium high school in 1938. He spent two years at CPS and some time in California before entering the army for three and one-half years, during which time he worked with codes and ciphers.

Along in November, Phil and his wife will be celebrating the second birthday of their 16-month-old daughter. So, if you girls want to do any hero worshipping, we're afraid you'll have to do it from the sidelines.

Dorm Dora

Dear Diary:

The keynote of fashion among dorm girls is hair curled on stockings instead of the ever-popular pin-curl method. Every other girl I see each night looks just like a cocker spaniel with multi-colored ears. I haven't decided yet whether I'm going to remain a peeled onion (the pin-curl type) or start putting on the dog.

Am I ever envious of all the dorm girls who are getting engaged. First it was Lu Randall, and now it's Wilma Reed and Barbara Rowe. Wilma announced hers at the Gamma preference luncheon while Barbara gave the traditional box of candy to a few of her old room-mates last Tuesday. Oh, And do those rings ever sparkle!

The dorm is full of queer characters, but the queerest of all was a pickled frog that scared everyone half out of their wits last Wednesday evening. It even landed in my bed, but thank goodness I wasn't in it or I'd have yelled even louder than the other girls who discovered it among their things.

The Egbert, Todd and Smovir residence on second floor proves to be the spot where one can drop in at team time for a spot of tea. I really dropped in, too, because it's a "powerful" potent brew.

I'll have to remind the other girls to come up sometime and see Rouqueforts.) I think we'll be longing to Lee Secord. That's one face in the dorm now that looks funnier than mine, (not Lee's but Rouqueforts.) I think we'll be good friends, since we have as much in common.

The latest musical feature of the Dorm Dungeon was a six-piece band which paraded through the halls of the dorm last Wednesday. The creator was — as you would not expect — a sophomore (or would you? A statement issued by the band members was this, quote: "Some of these people who come to college for culture and they don't appreciate the fine art of harmony when it is right outside their doors — well!" Composed of one French horn, two spoons, a flute and two combs, the band was organized for the purpose of presenting a higher type of music to Anderson Hall. The repertoire consisted of "Mary Had a Little Lamb" in a special syncopated arrangement.

broadcast schedule this month. Our music department will have talent galore to sound over the ether waves whenever its turn comes. For the uninformed, this radio program presents the music department from a different high school or college in Tacoma each week. Those who take part find broadcasting to be great fun. The best part is being able to turn on the radio the night following a broadcast and listen to what is supposed to be an authentic transcription of you and yours the night before. It never sounds the same, does it?

OFF BEAT

By the EmCee

Reigning supreme in the Adelpian Concert Choir last week was anything but silence. Most of the time was given over to organization and business, the latter including two stupendous announcements. First, the members of the choir heard the tentative plans for touring next spring. It seems there will be a major tour of nine days duration, a minute tour that will involve one lost week-end from school, and a medium sized tour that will take the group within an 80-mile radius of Tenino, the metropolis of hat-raising possibilities.

But the best news of all came to 70 ears when it was announced that the Adelpians will have new choir robes this year. No more will the men have to squirm into two-piece ensembles that, in the first stage, resembled anything except choir robes. The women were quite adept at the squirming, though they didn't like it any better than the basses and tenors. Measurements for the new robes will soon be taken. The gowns will be maroon in color and draped with cream satin stoles with a maroon monogram of CPS superimposed. (No comments from the society editors, please). The manufacturer calls it "Symphony." President Mary Agnes Gallagher's first comment was "OOOHHhh." Intelligent, what?

King Noise reigned in Jones 403 last week when the college band held its first rehearsal. With almost 40 registered for band, Director John O'Conner has offered thrills aplenty to anyone who is willing to work. Spectacle in the way of marching for football games is the project for the next eight weeks. Of course that takes practice out-of-doors, and when Mr. O'Conner announced a regular schedule for field marching, someone hinted that it frequently rains around Tacoma. "Then we'll use the gym," was the reply. And in white sweaters, emblems, and two-color caps, the band will add a lot of pep and show to CPS's home games.

While we're on the subject of first rehearsals, the Puget Sound Symphony also has its initial rehearsal last Monday evening. Any violin player can be glad he doesn't need his lungs to play his instrument by the time he climbs the 89 steps up to Jones 403. That's a winding, windy trip, brother. More students than ever before are taking this activity which also includes in its membership citizens from the community. More cello and viola players will be welcomed by Mr. O'Conner, the director.

The Tacoma City Light has announced that the Campus Radio Theater will begin its regular

### Sunday Begins Rush Affairs For Kappa Phi

Rush season for Kappa Phi, national Methodist college girls' club will open with communion and a dinner next Sunday, according to Anna-Marie Vaughn, president. It will be held October 6, World Communion Day for Protestant churches, at 10:45 a. m. at Epworth Methodist church. The girls will take communion in a body, and following the service adjourn downstairs for dinner and a social hour. The theme carried throughout will be "We Must Be Friends". There will be a small charge.

Other rush affairs will be an open meeting held Monday, October 14, and a treasure hunt covering most of the north-end, October 18, Miss Vaughn added.

The committee in charge of rushing is Kay Cooney, chairman; Marian Gehan, Carol Hamilton, Veretta Harville and Zelda Lay. Miss Eunice Allen is the new associate sponsor of Kappa Phi. She has been active in Methodist young people's work here. Mrs. Robbins, although retired from active work as an instructor, is still sponsor of the club.

This year's officers are: Miss Vaughn, president; Carol Todd, vice-president; Polly Packard, treasurer; Donna June Bennett and Dottie Kostenbader, corresponding and recording secretaries, respectively; Jing Ho Ling, historian; Helen Strong, chaplain; and Lu Randall, program-chairman.

Appointive positions are being filled by: Barbara Lindahl, art and invitation; Donna MacInnis, Candle Beam and publicity; Lois Fassett, membership; Aleatha Dietrich, social; Gretchen Ernst, music; Harriet Warne, properties; Ruth Gustafson, religious activities; and co-chairman of pins and finance, Janette Blake and Vera Jensen. Secretaries of alumni and patronesses, and mothers' club are Joan Tregoning and June Schorer Justice, respectively.

### D. Robert Smith Presents Organ Concert Sunday

D. Robert Smith, head of CPS's organ and theory department, presented an organ recital in Jones Hall Sunday, according to Prof. Clyde Keutzer, music department head.

Professor Smith returned to the College this fall after spending four years in the Navy and one year studying under Hugh Porter at the Union Theological Seminary in New York.

#### VOGUE CLEANERS

"For Neatness"  
2814 Sixth Ave

#### MARTY'S CAFE

606 SO. KAY

- The place to MEET friends.
- The good place to EAT.

Open any hour of the day or night

SWEAT SHIRTS, GREY, FREEDOM SLEEVE SWEAT AND CUSHION SOLE SOX

#### JENSEN'S

MEN'S & BOYS' SHOP

### Girls Announce Three Betrothals

Three CPS girls — Lucille Randall, Wilma Reed, and Barbara Rowe — have recently announced their engagements to friends and sorority sisters.

Lucille, daughter of Mr. and Mrs. W. H. Randall of Spokane, is a senior. She is a member of Alpha Beta Upsilon sorority and announced her engagement at a meeting of that organization. She and her fiance, Jim Thosath, of Spokane, plan to be married next June after she has graduated. An art major, she is a member of Otah, SCA, Kappi Phi, the Women's Glee club and the O. T. club.

A sophomore from Wenatchee, Barbara told her friends of her engagement to Kenneth Jarvis, of Mesa, Arizona, at an informal gathering of her friends in Anderson Hall. She is active in the Women's Glee club, SCA, Campus Playcrafters, Independents and Choral Readers. No date has been set for the wedding.

Wilma, an O. T. major from Vancouver, British Columbia, announced her engagement to Eric Woods at the Delta Alpha Gamma luncheon held at Lakewood last Saturday. She plans to finish her training at CPS this year and study

### New Members Elect Officers

Proudly wearing the pledge ribbons symbolizing the colors of their groups, the new pledges of three of the sororities have already met and elected their officers.

To head the Alpha Beta Upsilon pledges is Jo Anne Boyer. Joan Mooney was chosen vice-president and Yvonne Battin was elected secretary-treasurer. Pledge mother of the group is Peggy Rough and Neva Iverson is pledge papa.

The pledges of Delta Alpha Gamma chose Peggy Weaver as president; Ruthella Raver, vice-president; Diane Jensen, secretary; and Lorna Loucks, treasurer. Shirley Gibbs is to serve as pledge mother.

President of the new Lambda Sigma Chi group is Pat Voshmik. The other officers are Laura Alm, vice-president; Ila Jane Haugen, secretary, and Lorna Hill, sergeant-at-arms. Vernace Barton is pledge mother.

The Kappa Sigma Theta pledges have not yet chosen their officers since they will not receive their ribbons until the pledge banquet.

one year at a clinic before being married. Her fiance will graduate from the electrical engineering school at the University of British Columbia next spring.

### Highest Honor Bestowed On CPS President At Banquet

Climaxing a speaker's speechfest, the Forensic Welcome Banquet, it was revealed that Dr. R. Franklin Thompson, president of CPS has been elected to membership in Pi Kappa Delta, national honorary forensic society.

Dr. Thompson, who was primary speaker at the event which was held in the Pilgrim Congregational Church, with nearly 50 attending, outlined the reasons why college forensics are a most important activity, in college and after graduation.

Debate manager Robert McNary introduced the visitors and speakers, including the faculty members of Pi Kappa Delta, Dr. John D. Regester, Dean, and Dr. Marvin R. Schafer, and Dr. Charles T. Battin, coach.

Dr. Battin presented keys to the following for their work in forensics last season which entitled them to membership in CPS's Alpha Chapter of Pi Kappa Delta; Har-

riet Fiske, Mary Jean Kean, Louise Kipper, Fred Bondy, Lyle Lindellen and Robert McNary. Bernard Crowell, who took part in competition last year, has been elected to membership.

Charles L. Thomas, '34, was the alumni speaker. Charles, who was a CPS champion, representing the Loggers in tournaments in Tulsa, Oklahoma, and Louisville, Kentucky, related some of his experiences as a college debater.

Louise Kipper, women's debate manager, sketched the history of the women's section of the debate department. It was revealed that out of the five Pacific Coast Championships held by CPS, the girl's teams have captured three.

#### BOWL North End Alleys

for Health, Exercise and Fun  
Snack Bar for Nutrition  
3806 No. 26th PR 9090

#### Peterson Brothers, Inc.

Hay, Grain, Feeds, Garden and Poultry Supplies  
Dutch Boy Paint and Kemtone  
1002-1004 South K St.  
Phone: MAin 0331

PARKER "51" PENS  
We Have a Large Stock For Your Selection

PROCTOR PHARMACY  
3818 North 26th P Rector 2235

### Four Pledge Banquets Planned For Saturday

Shining eyes and happy faces will lend a radiant glow to the four pledge banquets to be given Saturday evening, October 5, by the sororities of CPS in honor of their prospective members.

A formal initiation at Lakewood Terrace, sponsored by alumni of Alpha Beta Upsilon, will be held from 7 to 9 p. m. Orchid and gold decorations, Beta colors, will predominate. Mrs. Kyle Smith, last year's Beta president, will sing in a program presented by the alumni. Pledges who will receive their formal pledging are Margaret Allen, Donna Barker, Yvonne Battin, Jo Anne Boyer, Gloria Cadigan, Alice Collins, Janice Hitchcock, Avolda Hughes, Gwen Jones, Shirley Klennane, Pat McCarty, Joan Mooney, Marjorie Smovir, Ruth Southwell.

General chairman for the Delta Alpha Gamamas is Elizabeth Anderberg. The affair will be held at Nettie's Cafe in Puyallup, and will be informal, with the girls wearing street length dresses. Gamma pledges, to be honored are Betty Abrahamson, Charlotte Conrad, Lois Dryden, Bernita Falk, Glo Gleason, Marilee Hunt, Dixie James, Diane Jensen, Betty Kornmesser, Lorna Loucks, Ruthella Raver, Gwen Roberts, Sue Robinson, Jean Shiplett, Betty Troxel, Coral Venske, Peggy Weaver.

According to Lois Lynch, Gamma

president, at least 12 alums will be present also.

The traditional black and white is the theme for Lambda Sigma Chi's formal banquet at the Green Parrot Inn. Under the chairmanship of Kathryn Alm, the sorority's advisor, Mrs. Fossum, will speak to the girls. Last year's president will also have something to say. Lambda pledges at the banquet will be Laura Alm, Hally Anderson, Dolores Hampton, Ila Jane Haugen, Mona Mae Hevertz, Laura Hill, Eloise Hotes, Eloise Howe, Joan Langmack, Betty Jean McConville, Jean Mitchell, Mary Lou Moon, Lynn Murphy, Judith Pearson, Kathie Shultz, Marjorie Venter, Pat Voshmik.

Kappa Sigma Theta will hold its pledge banquet at Five Point Inn, under the chairmanship of Rosa May Monger and Gloria Gipple. At the formal dinner, all pledges will receive their ribbons. Pins will come later, according to Alice Ann Cross, general chairman. Pledges to be honored are Joane Abrahamson, Margaret Armstrong, Patricia Carlson, Elizabeth DeMille, Gwendolyn Evans, Doreen Ferguson, Betty Jean Gosselin, Barbara Hager, Doris Hoffman, Barbara Hofford, Colleen Kelly, Jo Ann Kirkabo, Jo Kraus, Betje Liljequist, Virginia Lochow, Lucy McIntyre, Marcella Morton, Charlotte Stalwick, Lorayne Rockway, Pat Wingard.

### Elvena Amundsen Weds Don Bennett

Miss Elvena Amundsen, '46 graduate of CPS and former Delta Alpha Gamma president, became the bride of Donald Bennett, '46, in a formal wedding at Gloria Dieu Lutheran Church in Olympia last Sunday evening.

Known to their CPS friends as "Vernie and Don," they will make their home in Everett where he is employed at KRKO, a Mutual station. While in college he was a member of the Sigma Mu Chi fraternity and she was national president of Spurs as well as being listed in "Who's Who in American Colleges and Universities."

Mary Lou Elliott and Lucille Ludwick were her attendants.

### Want To Give Mountain Goats Some Competition? Contact Doctor Tomlinson

Any men on the Campus who would be interested in forming a Mountaineering Club are asked to see Dr. Tomlinson sometime this week.

"There has always been an active group of Mountaineers on the Campus," Tomlinson explained, "and it is only logical to band together to do some real climbing. The University of British Columbia has a very active Outing Club which does a great deal of climbing, as do most of the larger American Eastern colleges."

#### HAMBURGERS AND REFRESHMENTS

AT PAT'S FOUNTAIN SERVICE

NORTH 21ST

#### OSTLUND'S SHOE STORE

Fine Shoe Repairing

- Drew Arch Rest for Women
- Weyenberg for Men

1110 SO. "K" ST. BR 4652  
Tacoma 3, Wash.

#### FARLEY'S FLORIST for that special Corsage 6th & Anderson MAin 1129

#### KOZY CAFE

Breakfast — Lunch — Dinner

For Your Enjoyment  
A Complete Soda Line

WE SERVE OLYMPIC ICE CREAM

Open from 8 A. M. to 12:30 A. M.

3812 North 26th

P Rector 3355

# LOGGERS TO OPEN GRID SEASON SATURDAY

## CPS Travels To Bellingham For Conference Inaugural

By Mal Stevens

At eight o'clock this Saturday evening the Logger's first post-war eleven moves into high gear. They travel to Bellingham to do battle with the Vikings of Western Washington College of Education (in years gone by—Bellingham Normal).

The braintrusters of the CPS athletic department picked no easy task for their opener, as the Viking school boasts a larger squad than ever before. Charles Lapenbusch, Western Washington Coach, is expected to field another one of his fast ball clubs. Coach Lapenbusch, past master at singing the blues, has already used his weeping towel extensively in this area, letting it be known that he hasn't had enough time for practice and the Loggers are a good two weeks ahead of him in all departments of the game.

### Moans Mean Trouble

"If I know Lappie," said Coach Patrick, "the harder and louder he moans the tougher his team is, and he's crying unusually loud and long this season. We've got a tough game on our hands Saturday night. Our team is exceedingly green, but they are rough and tough, and the Vikings will know they've been in a ball game when it's over."

Coach Patrick plans on taking a squad of 33 men. He wouldn't name a starting lineup, and couldn't even be pinned down to name a traveling squad. The travelers are to be named this Friday night after turnout, and the starting lineup to be called in the locker room just before game time.

### Battle for End Positions

At the end positions it is a battle for the starting berth. Russ Keyes, Dick Robinson, Ed Huntington, Fred Pyfer, Bus Mitchell, Carl Messmer and Jack Hermesen all gunning for the call. Jim Cadigan, by virtue of his defensive play

the last week can't be counted out.

The tackle position has narrowed down to six men: Bob Morrison, Dick Hermesen, Ralph Rowe, Russ Skattum, Bill Fitzsimmons and Phil Hansen. Bill Sparks, the seventh tackle was out all of last week with a bad cold, but will be a contender as soon as he gets back in shape.

### Three Teams of Guards

Ralph Lundvall and Jim Rice, the two letterman from '42, are one of the three teams of guards. Bud Greedy and Les Gilsdorf have been working together, while Claude Knecht and Jack Adams are teamed.

LaVerne Martineau, Dick Towle and Jack McMillan are vying for the pivot spot.

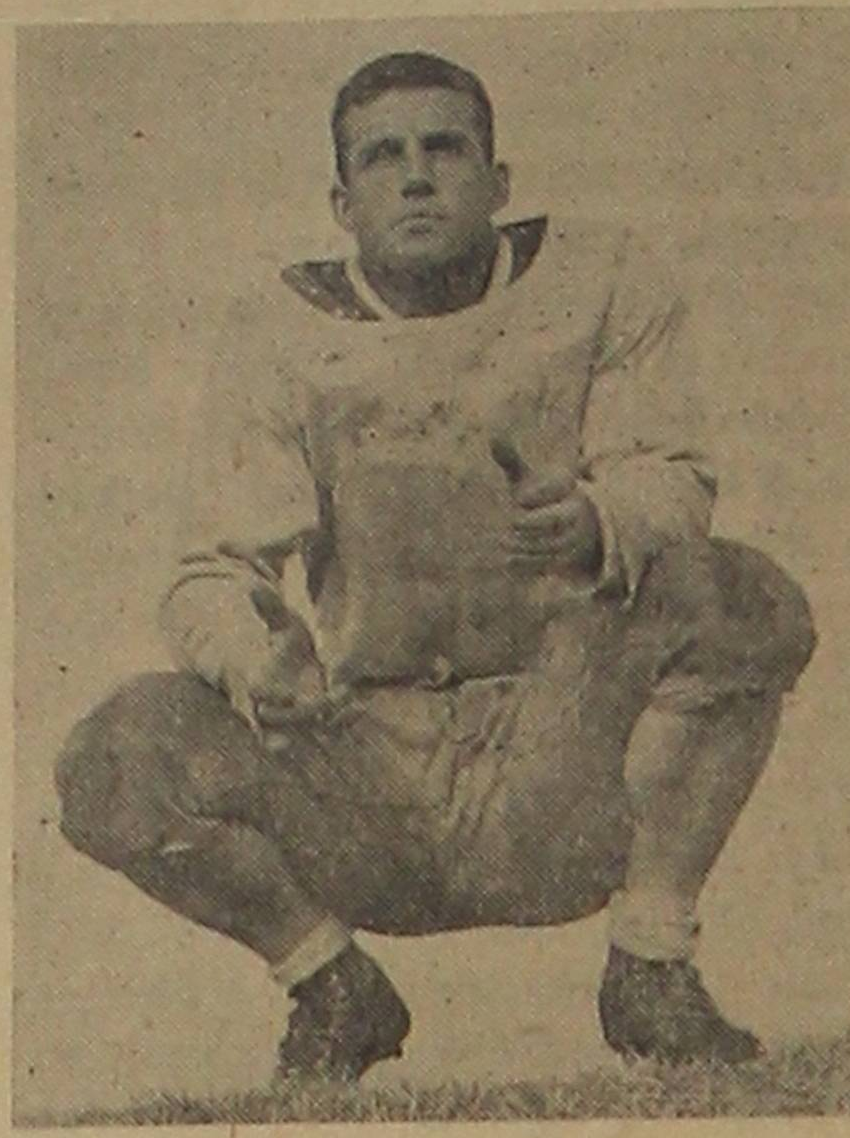
The quarterback position will go to Kenny Vollmar, Ed Bemis, Jack Wilson or George Williams.

The ball-packing position, left half, has turned out to be a torrid battle. "Vanishing Vic" Martineau and Ray Ortlund were doing most of the work last week, but Letterman Jocko Spencer and "Hurrying Harry" Mansfield are right behind them. The other probables are Don Briggs, Roy Loper and Jack Lowney.

Right half position has either Darrell Swenson, Carl Niemi, Tom Sturm or Bill Stromberg as its starter.

"Woodie" Wood and Bob Robbins are neck and neck for the fullback slot, with "Joltin' Joe" Manley right behind them.

Trainer Pat Steele has the boys all in good shape, and except for the usual bumps and bruises there hasn't been a serious injury during the pre-season practice sessions.



Assistant Coach—Bill Madden, above, and Joe Rettinger are helping Head Mentor Frank Patrick with CPS football this season.

## Gym Shorts

By Helen Caputo

"Sports Spree" was the name of the gathering which was held in the gym by W. A. A. last Wednesday noon. This served to introduce the freshmen girls to Women's Athletic Association. At that time schedules in pamphlet form of a basketball, specifying the different games to be played, were issued by vice-president, Peggy Rough. Betty Jane Cappa, president, then spoke to the group about the traditions and sportsmanship created by W. A. A. Mrs. Johnson, advisor, also extended her welcome to the gathering. At the close of the session delicious apples were served.

On Friday, September 27, the first game of hockey was played. Those girls who are still interested in turning out, however, may do so. As a reminder we meet every Monday, Wednesday, and Friday at noon, in the gym. Upon request you will be issued a locker.

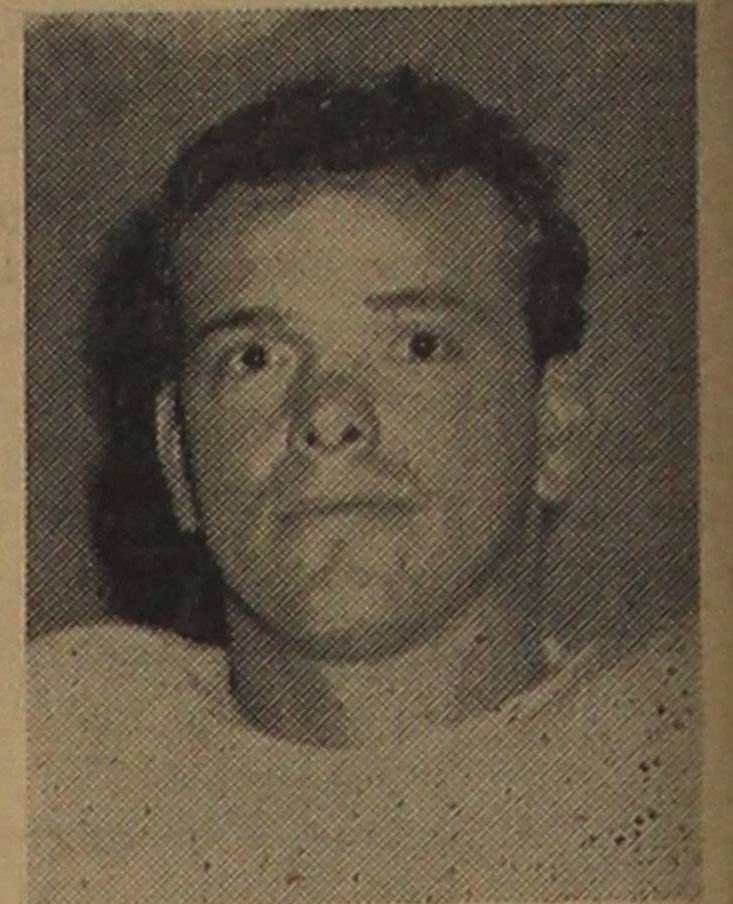
## Rettinger, Madden Assist Patrick In Coaching Duties

When football turnouts started three weeks ago, Coach Frank Patrick rounded out his coaching staff by naming Joe Rettinger and Bill Madden his assistants.

Rettinger, like Coach Patrick, is a product of the University of Pittsburgh. He was graduated in 1940. In 1938 he was an understudy of Bill Daddio, Pitt's All-American end of that year. The following season he gained national recognition as a great pass receiver. His grid fame was cut short in '40 by injuries. After graduation Joe coached several years in the east before entering the service, and after three years in Uncle Sam's army he wound up at Fort Lewis for a discharge; decided to make his home in the northwest. Coach Patrick immediately signed him up to coach the line.

Bill Madden is no new name to the CPS campus. Billy romped in the Logger backfield for four years, gaining all-conference recognition his last two years as well as the

team inspirational award. He donated his services to his draft for the next four years finally being discharged as a captain in the Air Forces at the end of hostilities.



Joe Rettinger

Bill is back in school now studying for his certificate, and assisting Coach Patrick with the backfield candidates for the Logger eleven.

## Freshmen Defeat Sophomores In Annual Bag Rush, 756 to 300

Defeating the sophomores by a score of 756 to 300, CPS freshmen broke a tradition in the traditional bag rush held on the college football field Friday.

The freshman victory was a reversal of the usual procedure at bag rushes, since the sophomores nearly always triumph with the most number of points which are based on the number of feet one team carries the 50 pound bag of sawdust toward their opponent's goal line.

Freshmen can no longer be compelled to wear the green beanies signifying their "green" condition at the college because of the trouncing they handed the sophomores. To quote a sophomore: "This is certainly going to make it hard for us to maintain the proper discipline with those freshmen." Freshman participants in the bag

rush were James Bell, Warren Brown, Ken Campbell, Dan Desmond, Carroll Dunne, Dick Frederick, Don Freese, Jim Luzzo, Wayne Seaman, Bill Sepetoski, Lloyd Silver, Howard Walters, Bob Wassel, Ralph Wilbert, Glen Whiteley and Hal Wolf.

Members of the sophomore team were Clayton Anderson, James Johnson, Sidney Smith, W. H. Harrison, Leo Butigan, Tom Porra, Jim Wornstaff, Wade England, Ron Buttoe, Kenneth Langdon, Wayne Mann, and Al Billett.

There was a bit of snafu in the schedule the Trail printed last week. We left out the most important game of the season, so underline this one as the game of the year:

Nov. 30—Pacific Lutheran vs. CPS at the Stadium, 2 p. m.

**OHISER'S**  
STUDENT LAMPS  
and  
PINUP LAMPS  
3802 No. 26th PR 3801

**Proctor Theatre**  
2611 No. Proctor PR 5461  
Tues., Wed. & Thurs., Oct. 1-2-3  
Paulette Goddard, Ray Milland in  
"KITTY"  
News and Shorts  
Fri. & Sat., Oct. 4-5  
Johnny Weismuller,  
Brenda Joyce  
"TARZAN AND THE  
LEOPARD WOMAN"  
Plus: "Young and Willing"  
Sun. & Mon., Oct. 6-7  
Myrna Loy & Don Ameche in  
"SO GOES MY LOVE"  
and "IDEA GIRL"  
Doors open week days at 6:45  
Sundays at 2:30  
Adm. Prices: 15c & 40c (inc. tax)

**HAIRCUTS**  
YOU  
WILL  
LIKE  
AT . . . .  
**RAINIER  
BARBER  
SHOP**

**RAY SOWERS**  
NORTH END JEWELRY  
2703 No. Proctor PR 5681

**Fulton's Bakery**  
2813 6th Avenue  
MAin 9722

**DON'T BUT** cut a class for one of our milk shakes  
see us in your free time  
**Proctor Ice Creamery**  
At "Proctor & 26th" PProctor 9066

Order Your . . .  
**PERSONAL CARDS AND STATIONERY NOW**  
At  
**ALLSTRUM PRINTING COMPANY**  
714 Pacific Avenue MAin 6768

**ATTENTION VETERANS**  
You are cordially invited to attend meetings of the **AMERICAN VETERANS' COMMITTEE**, the liberal group that fights to preserve the peace you fought the war to gain. Tacoma Chapter meets every Thursday at 7:45 p. m. at the Y. M. C. A.

Welcome  
pause  
  
**DRINK**  
**Coca-Cola**  
REG. U.S. PAT. OFF.  
5¢  
BOTTLED UNDER AUTHORITY OF THE COCA-COLA COMPANY BY  
THE COCA-COLA BOTTLING COMPANY  
Tacoma, Washington