

DAY, OCT. 14, 1942

BOW

nder

Win

r way last Tue

psilon swamps

most upset t

opping an ove

defeated Sign

in the first ha

to Don Brow

third touchdow

to Bart Wood

inter, for the ta

Woods was g

nt and ended

ore First

Phi team st

the first five

their attack bog

came as a re

a series of

the five-yard

pped a short

The intended

to it, but he

n, Kapp cen

old and step

A pass to C

zone made

d the Barba

the Delta Kap

the fourth de

plete it. F

stripes, the In

and with the

20 paces ge

r. Jerry Se

pass to Mu

with only 20

A similar r

in the over

ye to N

range the ne

nds Win

arry Kaplan

team looked

capable by

Kaplan

assing two

elner and D

ne over him

outrushed

no scoring

ended all g

ramular m

yoone come

pective gro

n Main

Bowling

g has bee

is year in

skating

ourses. W

little pra

come excep

exclaimed

ortage of

s is also ge

et up pins

even th

ave to do

lson, one c

ting

COMPAN

82.22

T AFTER

ME

TON'S

XXX

EL

UP AVE.

RS

E CO

Admission is
Free to the
Freshman
Plays

THE Puget Sound TRAIL

Tell Your
Friends
About
Homecoming

1942-43, No. 4

THE COLLEGE OF PUGET SOUND, TACOMA, WASHINGTON

FRIDAY, OCT. 23, 1942

Frosh Plays Spotlighted Friday Eve

Special "between the acts" numbers have been planned for the freshman plays Friday night in Jones Hall auditorium at 8:15. La Verne Harris accompanied by Virginia Mekkes, will dance; Peggy Doubek will sing, accompanied by Carol Webb, and Virginia Taylor and Jerry Madsatre will present a novelty number. Henry Farmer's special arrangement of "Blue Bells of Scotland" has been selected for a violin solo by Barbara Barrie, accompanied by Peggy Doubek.

The production staff of the Campus Playcrafters includes Frank Hanawalt, manager, Asa Maylott, assistant manager, Dorothy Howard, graduate assistant, Marjorie Dawson, newspaper publicity, and Anita Sherman, general chairman.

Girls Will Usher
Virginia Mekkes will be head usherette, assisted by Noreen Tierney, Shirley Black, Viola Maylott, Gloria Corum, Helen Wilder, Jean O'Conner, Peggy McKerney and Murden Wood.

Make-up chairmen are Jaunita Robinson, "Food," Jean Johnson and Virginia Wilson, "Game of Chess" and Ruby Smith and Ursula Watts, "Women Folks."

Prompters will be Virginia Beatty, Marian Sandal and Lu Jean Logan. Stage crews are Ernest Goodner, Hollister Gee, Bob Dahl, Frank Boskovich, Jack Burroughs and Don Hoff.

Property committees include Bernice Crowell, Jackie Burgess, Maxine Markham, Vernie Amundson, Bill Ross, Eileen Alexander, Leonard Medlock and Joe Kowalski.

Large Year Book Staff to Work On Publication

With an energetic staff of 36, the work on the Tamanawas of 1943 is under way. Contracts were let this week for the lithography, covers, photography and the page layouts were begun.

Class editors with whom you'll soon make an appointment to have your picture taken are: Ethel Jane Cohoon, senior; Nadine Padden, junior; LeRoy Vaughn, sophomore; and Elverna Amundson and Ed Funk, freshman. Picture editor is Helen Pat Beem.

Men's athletics will be handled by Bill Gregory and Bill Ross and women's athletics by Jean McDougall and Betty Jane Pyle. Mary Louise Rogers and Robby Lee Roberson will be in charge of the sorority section while Walt Berg and Harry Hesscox will plan the fraternity pages.

Editor Chosen
Departmental editors are Elsie Hansen, publications, Thelma Smith, music, Frank Hanawalt, dramatics, Bill Kolivisto, forensics, and Jane Thompson, administration. Honoraries and clubs will be handled by Loretta Maynes, Edith Ploeger, Lu Jean Logan, Jerry Spellman, Hubert Price and Virginia Mekkes.

Special art work and cover design will be done by Betty Irle and Pat Hildebrandt. Marjorie Bentley will be staff typist and snapshots will be taken by Bert Wadsworth, Don McCort, Preston Onstead, and Bill Kolivisto.

Assisting Jack Graybeal, business manager, are Norm Willard and Becky McDermid.

Next week the Trail will be a special issue dedicated to efforts of CPS students in the city-wide scrap campaign. Campus groups are urged to start collecting their donations now.



A scene from "Women Folks," hilarious comedy scheduled for its initial performance Friday evening at 8 p.m. is just one of the series of clever plays to be presented on the stage tonight at the second annual production of freshman class plays.

Homecoming Beard Contest Registration Starts Monday

Shaveless days are in store for CPS males as Monday will open the "Grow a Beard for Homecoming" contest, with any male capable of producing fuzz eligible. According to Bill Glover and Jake Moore, rules are scarce, with the only stipulation being, that contestants must register beginning "at scratch."

"This contest is not a new one in the portals of our Alma Mater," Jake assured, "it is merely one revived from the period of bye-gone days when men were men and women liked beards."

This year's contest should prove very interesting, with all sizes and shapes of beards being grown. Jake Moore wishes to point out that lack of heavy or long whiskers should keep no man from entering, for prizes will be given for length, thickness, originality of design and color. A booby prize will also be included for any frustrated lad who has not yet attained this adult characteristic.

Registration will take place Monday noon at the Sub. A comely pledge from each sorority will be on hand to register each contestant, and rub a fleeting hand over each cheek to see that no one has started over the week end. Jake Moore has set a reasonable registration fee of ten cents that will cover the cost of anything that may come up.

A peek into the future seems to find by Larson and Spike Ferguson in hot pursuit of the Ulysses S. Grant title, while Don Brown should be a strong contestant for the "Fu Man Chu" award, with all

Two CPS Men Receive Honors

Two former CPS men received high recognition this week in the navy and army. Lt. John Clifford, graduate in '40 as a chemistry ma-



LT. JOHN CLIFFORD

gor, is the first Tacoman to receive the navy cross for distinguished valor in action, and William (Bill) Cleveland was recently commissioned Lt. Colonel in the army military forces.

Lt. Colonel Cleveland entered CPS in 1931 and was an active student here, marrying Margaret Boen, also a CPS girl.

Students Collect Scrap for Drive

The next issue of the Trail will be dedicated to college war-effort. In co-operation with the Tacoma scrap-metal drive of which Norman Schut, junior, is chairman, College of Puget Sound men will be organized to assist in the Sunday, November 1, "Parking Strip Pick-Up."

Members of the football squad and fraternity groups will assist in this city-wide campaign, and this will be the first combined effort made by CPS students in the immediate war effort.

A combined meeting of fraternity and independent men will be called by Paul Heuston, president of ASCPS to explain what part men of the college will play in the scrap collection.

Magazine Carries Faculty Article

"Why Teachers of Speech?" an article written by Dr. Charles T. Battin appeared in the October issue of the Forensic magazine, and dealt with the problems of apparent lowering of standards of topics for oratory and debate discussion.

The official debate question for the year has been selected by the national Pi Kappa Delta. The question will be, Resolved: That the United Nations should establish a permanent federal union with power to tax and regulate commerce, to settle international disputes and to enforce such settlements as to maintain a police force, and to provide for the admission of other nations which accept the principles of the Union.

Pi Kappa Delta began its selection of a national official question in 1922.

66 CPS MEN ENLISTED IN COLLEGE RESERVES

Results from a survey conducted by Mr. Perry, under the supervision of the local military council, show that 66 CPS men are enlisted in the various reserve classifications. Figures obtained by interviewing all men of draft age and those who had not yet enlisted in one of the reserve branches.

On November 20 a joint military service board will be at school to effect other enlistments.

MONDAY LAST DAY FOR CARDS

Monday noon is the deadline for obtaining student body cards and all those who have not yet received their cards must have them by Monday.

Paul Heuston announces that a Spur will be on hand to pass out cards. "Special effort should be made to get your card, because not only is it a means of getting into school affairs but is an excellent source of identification," added Paul.

Prof. Frederick Acts as Chairman Of Service Group

Professor Arthur L. Frederick is chairman of the church planning and strategy department of the Washington state council of churches which is making extensive plans for work with men in the armed forces. Three meetings have recently been held in Tacoma and Seattle for the purpose of working out these plans.

This contemplated program will provide over-night housing for Saturday nights and Sunday morning breakfast. Its purpose is to provide Christian homes for the soldiers. Also, it seeks to gain the co-operation of the churches in providing Sunday evening fellowship and fireside hours for service men.

This proposed program will involve the work of three to four full time workers with complete office staffs located throughout the state, and will involve \$10,000 to \$12,000. Much of this money will come from the denominations who have raised funds for this purpose.

Due to the fact that this field of work has no precedent and is uncharted, a great deal of time will be required by many laymen in giving aid to the employed staff.

Variety Shown In Chapel Programs

Last Friday's chapel period was in charge of pepsters Esther Mann, Bill Glover and Jack Moore. Members of the football team were called on the stage to comment on prospects of winning the tilt between PLC and the Logger team. Music was furnished by George Lutz, sophomore, and Bob Lund, of Stadium. A new yell was introduced and was met with favorable reaction.

A Community chest drive movie was featured in Monday's chapel concerning the work of the chest in Tacoma. Descriptive pamphlets were also passed out.

During chapel Wednesday, the Rev. Dr. Moats, pastor of the First Methodist church in Seattle, was in charge. His convocation was on a college student's aspirations and their fulfillment. Donald Robbins sang a hymn.

DR. FOSSUM HEAD OF RESEARCH COMMITTEE

Dr. Paul Fossom, new professor of political science, is chairman for Mayor Harry P. Cain's Research Committee on City Planning. The purpose of this committee is to submit a practical plan for the future development of the Tacoma metropolitan area. By means of many maps, charts, graphs, diagrams and reports, material is being drawn up to form a composite working plan for the future growth of Tacoma.

There are thirteen committee members, 12 of whom are members of the faculty. Mr. J. M. Grey of the Weyerhaeuser Sales company is the only non-faculty member, the others being Dr. Battin, Dr. Williston, Dr. Schafer, Mr. Capen, Prof. McMillin, Mr. Perry, Prof. Frederick, Dr. Fossom, Prof. Slater and Dr. Powell and Dr. Shelmidine, who are now in the armed forces.

New Trends In Debating This Year

Wednesday's regular meeting of the forensic department brought news from Dr. Chas. Battin of the new style of debate to be practiced at CPS this year. "One-man debate teams are suggested because many teams may be broken up by the draft, and it seems advantageous to give it a try during the emergency," recommended Dr. Battin.

Lincoln Douglas Debate
The modified form of Lincoln-Douglas debating which has been suggested will be carried out similarly to these suggestions; the contestants in the debate include one speaker on each side. The affirmative opens the debate with a 12-minute constructive speech. This is followed by a 12-minute opening speech by the negative speaker.

After the constructive speeches have been completed, a period of eight minutes is allowed for questioning and discussion between the members with the affirmative opening the discussion. Following this procedure a five-minute rebuttal speech is presented by the negative. The debate is closed with a five-minute summarizing speech by the affirmative.

Mary Elizabeth Morton and Dr. Battin last week wrote to the Western Association of Speech Teachers in San Francisco, telling of their views on the above mentioned type of debate. All students interested can get information from Dr. Battin or Miss Morton.

Members of the Forensic department voted to enter in the "National Intercollegiate Radio Prize Debates." Preliminary tryouts will be held to select students to represent the college.

CPS Art Show Opened Sunday

The "Face of America" and the national water color shows opened Sunday in the College art galleries in Jones hall, with a tea given for some 150 art-lovers of Tacoma. In keeping with the "all out for America" theme, the art department is showing the works of famous American artists.

The galleries are opened from 12:30 to 5 on week days and from 2 to 6 on Sundays. There are many different varieties of pictures, to please every one. There is also an exquisite collection of blue china, donated by Mrs. J. J. Dempsey.

Pledges Serenade Anderson Hall Girls in Hell-Week Assignment

Tuesday night the girls of Anderson hall were entertained by two serenading Delta-Kappas who were going through hell-week for the amusement of their brothers. "Miss" Joe "Josephine" Kisduchak and "Mademoiselle" Jas. "Jinny" Dyer entertained their brothers who surrounded them in the dorm lobby, armed with heavy Delta Kapp paddles. Dorm girls draped gaily over the balcony and admired the two "belles" who were attired respectively in a luscious lavender afternoon dress, and a more informal Roman-striped dirndl skirt, and beige "form-fitting" sweater. "Jinny's" hair style was observed by all the girls, and no doubt all the residents of feminine seminary will be sporting this style soon. (No doubt the fog had something to do with their be-draggled appearance.)

Harmony a la Falsetto

Miss Lu Jean Logan is much envied because the delightful trio rendered "Happy Birthday" melodies to her, through a dedication by Joey Sands. Their falsetto voices also harmonized on "Alma Mater" and Mrs. Schneider stood by with her fingers in her ears, hoping that the couple would soon take a trip to the conservatory, and try out for Adelphians. (She couldn't bear telling them herself how well their voices didn't go together.) After fond goodnights from the two would-be charmers, the girls scattered back to their rooms in hopes that other fraternities would bring their pledge groups up soon, only hoping that the next ones would learn how to sing first.

Tom Brown Is Elected To Board

Tom Brown was elected senior representative, and Mary Elizabeth Morton and Norman Anderson were nominated for junior representatives to Central Board in the first all-school election of the 1942-43 year held during chapel period Thursday. Voting on the remaining candidates for junior representatives was held during chapel today, with results too late for publication.

The election was called to fill the office vacated by Frank Hanawalt who resigned to become dramatics manager and of Norman Breckner, junior representative, who did not return to school.

Election figures for Thursday were:

Junior representative:	
Norman Anderson	43
Mary Elizabeth Morton	38
Evelyn Seeley	37
Senior representative:	
Tom Brown	77
Peggy Steele	45

Homecoming Play Cast Out

Casting for the homecoming mystery, "I Killed the Count," has been completed, announces Miss Martha Pearl Jones, director.

The complete cast is as follows in order of their appearance:

Mattoni	Don Robbins
Polly	Esther Sandstedt
Davidson	LeRoy Vaughn
Raines	Frank Hanawalt
Prokrumpf	Herman Kleiner
Louise Rogers	Carol Webb
Renie La Lune	Peggy Steele
Samuel Diamond	
	Walter Seabloom
	Chuck Gleason
	Norman Anderson
	Bob Heath
	Rolland Lutz

PRESIDENT FEATURED

Education magazine features an article on Dr. Thompson, explaining that he is one of the youngest college presidents in the country today, and that he gained his administrative experience while acting as vice-president of Willamette university in Salem, Ore.

CHAPEL PROGRAMS

Monday, October 26—Major General David L. Stone will give a talk; Dr. Thompson presiding.

Wednesday, October 28 — The Reverend Milton A. Marcy of the First Methodist Church of Tacoma will be the guest speaker. Sherman Day is in charge. Virginia Mekkes will play a piano solo.

Friday, October 30—Reno Odlin, manager of the Puget Sound National Bank. Kay Woods is in charge.

THE PUGET SOUND TRAIL

Established September 25, 1922

Published Weekly During School Year

OFFICIAL PUBLICATION OF THE ASSOCIATED STUDENTS COLLEGE OF PUGET SOUND

11

1941 Member 1942 Associated Collegiate Press

Entered as second class matter at the Post Office in Tacoma, Wash., under the Act of Congress of March 3, 1879.

Subscription price 75c per semester; \$1.00 per school year by mail.

EDITOR MARIJANE LEWIS
SPORTS EDITOR JACK DUNCAN
SOCIETY EDITOR ROBBY LEE ROBERSON
FEATURE EDITOR LE ROY VAUGHN
BUSINESS MANAGER ESTHER MANN
TYPIST MARJORY BENTLY
CIRCULATION MGR. PRISCILLA NEWSCHWANDER

EDITORIAL STAFF—Mel Novikoff, Sam Andrews, Helen Marie Walker, Helen Pat Beem, Mary Louise Rogers, Ray Gillen, Art Hansen, Bill Ross, La Verne Harris, Herman Kleiner, Bernard Crowell, Jean McDougall, Jackie Burgess, Frank Hannawalt, Mimi Howell, Murden Woods, Virginia Wilson, Chet Dyer, Betty-Jane Pyle and Pegge Simpson.

Homecoming Cements School Spirit; Plans Already Underway for Event

Homecoming is just around the corner, so students prepare. This year, more than any other year we should put forth a double effort to make the 1942 Homecoming the biggest success ever known in our college history.

As to what we can do in planning our fiesta; tell every alum of the College of Puget Sound the dates and events planned. Urge your parents and friends, right now, to be sure and save Saturday, November 7, for our big game is scheduled for that afternoon.

To you freshmen Homecoming means more than a party, it symbolizes the bond that exists between college students in our generation and our mother and father's generation.

PARADE OF OPINION

William Cullen Dennis

October 19, 1942.

There is one basic requirement for successful development of the educational process, and that is freedom. The unique service of the small liberal arts, co-educational, church-related or independent colleges is in my judgment the maintenance and preservation of freedom.

Perhaps some idea of the ideal size for a small college may be obtained by considering the size of the "colleges" or "houses" into which the great universities are breaking up their college departments in an attempt to recapture the virtues of the small college.

The study of the liberal arts in itself means that emphasis is being placed on mental training rather than on the imparting of information or still less or specialization or technical training. To learn "how to think, not what to think," is the goal of the study of the liberal arts; its effect is to train the mind for any emergency.

Coeducation means adaptability. It means doing the same thing for growing young men and women that the skillful forester does for trees, that is to say, growing them as far as possible in the altitude and environment in which they will live.

A church-related or independent college means first of all a college free from any kind of state control. It is submitted that the maintenance of this type of college is absolutely essential to the preservation of "The American Way."

This is not an attack upon our great state universities or other state-controlled institutions of learning, which are just as essential in our national life as are the church-related and independent colleges. Eliminate the non-state college or impair its freedom, and the freedom of the state institution will disappear and there will be no freedom anywhere.

control all educational institutions.

How Much Are You Worth? Asks Head Sociology Professor

By Marvin R. Schafer

War times are times of crisis. Not the least are those crises revolving around the tremendous distortion of values which the war compels.

They tell us that each youth represents a money investment of ten to twenty-five thousand dollars. Yet you are worth so little you are being murdered by the millions, some living like rats and dying like flies.

Will you be able to maintain your equilibrium, especially concerning real values in this period of inescapable confusion? A boy of 14 was employed for some light and incidental work. Wages were left to his judgment. Measured in terms of work done or effort expended \$2.50 a day would have been generous compensation.

How much are you worth today? What is your intrinsic value? What is happening to your sense of value about yourself and the world of priorities through which you are being spasmodically driven? Yesterday alphabets were created in triplets to provide an income of \$30.00 a month for millions of young people unable to find employment at any figure.

"Are you keeping your head when all about you are losing theirs with the alibi—"This is WAR." What are you honestly worth—to yourself, to your school, to your employer, to the state and to your Creator.

Hit the Trail

Could it be that love light shining in Bob Maycumber's eyes after that date with Lucia Kisduchak last Friday night... Very nice to see Roy Murphy at the Rally Dance, wasn't it, Esther? ... Very confidentially told, but, Ed Hillis swears he's a woman-hater...

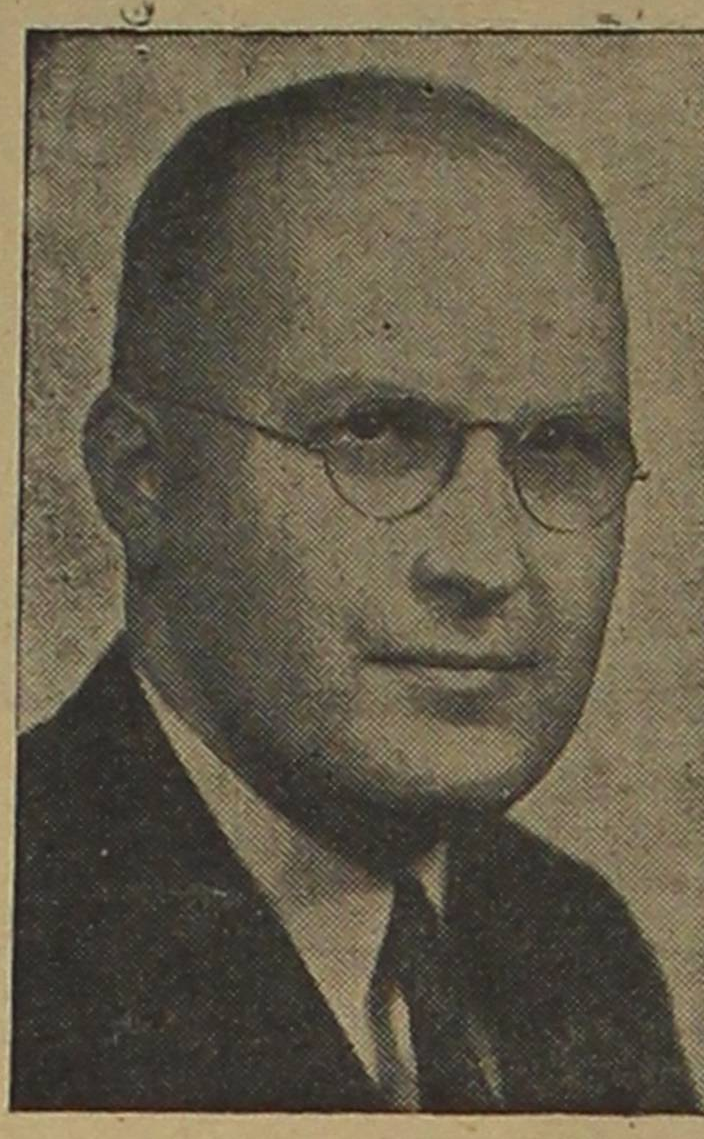
Psych Graduates Find Employment

Two recent psychology department graduates have found employment in the last few months. Doris Hartman '41, a major in psychology, attended the state University of Iowa last year and received the master's degree in July.

Leland Thune '41, also a major in psychology, accepted a scholarship in the psychology department of the state University of Iowa last year and received his master's degree in July. He was inducted into the army in June with the rating of "skilled psychologist" and is now stationed at Jefferson Barracks, Missouri.

Representatives Chosen For Central Board

In a recent election held by the freshmen class following their matriculation, Joe Kowalski was chosen to serve as their representative to Central Board. Joe is a member of the varsity football squad and is a pledge of Alpha Chi Nu.



DR. MARVIN R. SCHAFER

Active and Alum Omicrons Serve U. S. in Military

This is the first in a series of resumes compiled by the five fraternities telling where former members are now in military service.

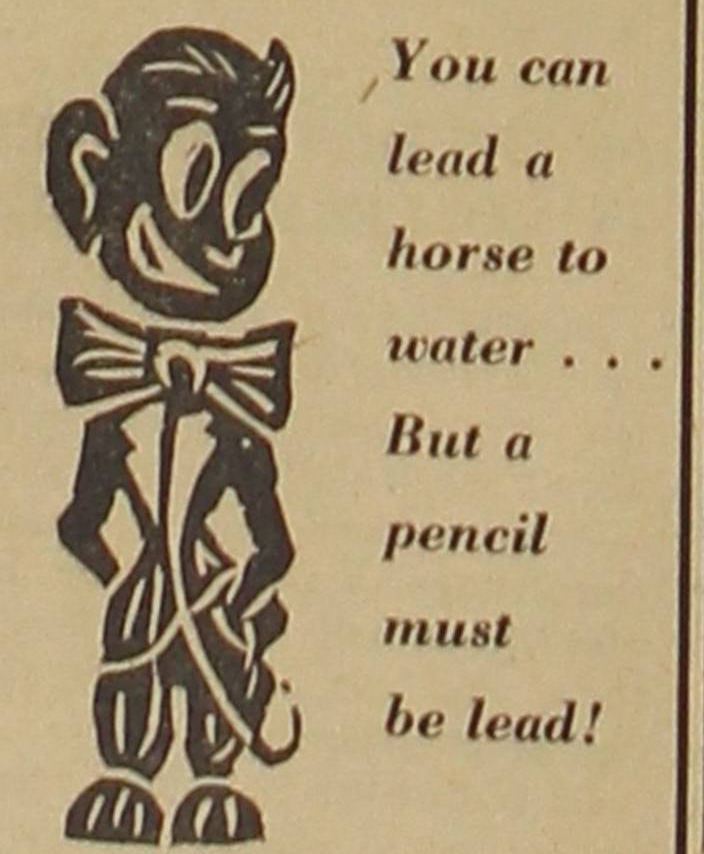
Fraternal organizations of CPS are doing their part in the war as shown by the members of Delta Pi Omicron. Every branch of the service is represented in the following list:

- U. S. Army: Larry Bond, Herbert Ehrlicke, Jack Enright, James Hicks, Marc Miller, Richard Musser, Patrick Steele, Clarence Schorer.
Army Air Corps: Earl Mamlock, Melvin Roalsvig and Forrest Van Slyke.
U. S. Navy: Wallace Drake, Warren Hoyt, Floyd LaFleur, Harold Johnson, Donald Raleigh and Bill McLaughlin.
Naval Air Corps: Herman Anderson.
Naval Radio: David Davies, Warren Holmes and Dave Powels.
N. S. Marine Corps: Philip Raymond and U. S. Merchant Marine: Jack Perry.

Big Jumbo's Marks All Over College

In this case, "Jumbo" is not an elephant, although he's left a clear trail around CPS. Have you noticed the sign which announces the library hours, and the small cards tacked on library bookshelves which list book references? There are also marks of "Jumbo" in the art gallery underneath each picture.

Lil' Algy Sez...



You can lead a horse to water... But a pencil must be lead!

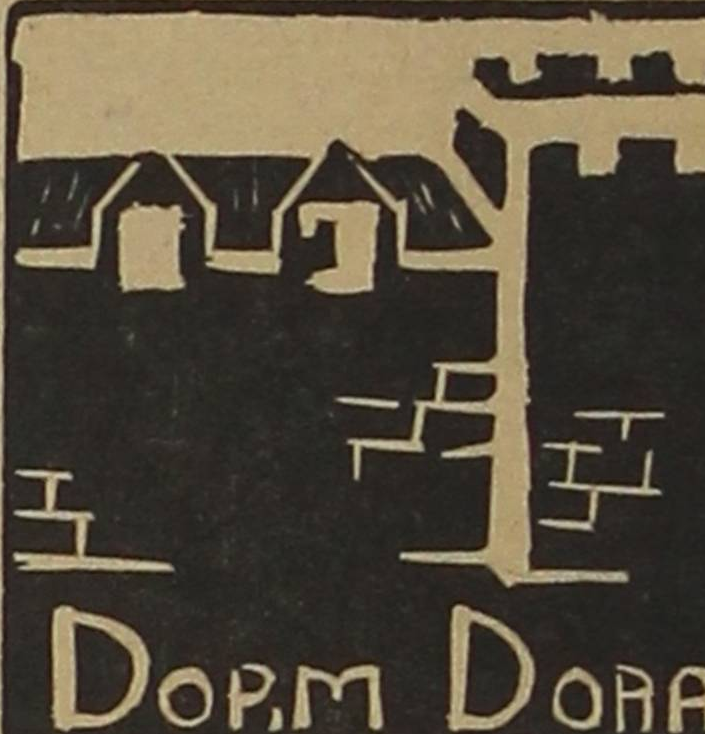
Library Offers Much In Way of Reading Pleasure

QUIET! We're in the library. See that box there by the desk? It's for books for service men and they read books just as much as any of us, so we should contribute what we can for their enjoyment.

The shelf of books by the door looks interesting. Let's stop and see what these books are. Wild Geese Calling, This Above All already well known as movies, are among the new books on the shelves.

Books for Every Taste Continuing to the right we come to the history section. Here can be found anything from the beginning of the world, to the war between China and Japan.

Comedy, drama, romance and the classics, from Shakespeare to Steinbeck, and from Hawthorne to Sandbergh. A book to suit everyone's taste.



Fraternity pins... silverware... lieutenants... letters from Virginia... gobs from Bremerton... hope chests... other such "tokens" have been flying around so thick and fast that we can hardly catch our breath.

Alice Clay represented us very well last weekend at the Portland. There is only one thing that she bewails, "I didn't get to eat Lutefish Saturday afternoon." We did!!

A momentous decision has been reached. After a house "bull session" we have decided to sleep in the dorm. Complying with new regulations. Mrs. Schneider has promised to wear soundproof shoes.

Peggy Steele, prexy, came back this week with stories of a very interesting weekend in Victoria. She tells us all sightseeing tours are conducted by horse and buggy.

Domestic Dears Darn and Dabble

It can be done! So said the girls in the foods lab as they boiled up some luscious grape fudge. What did it taste like? "It tasted like grapes and fudge," stated Ruth Herington, as she grazed fondly at the gooey mass.

The girls have also been canning grapes, pears, and tomatoes with varying degrees of success.

While these domestic darlings stir up a brew, others across the hall are learning to darn. Round darns, square darns, and even triangle darns (for those who cut their toenails V-for-Victory holes in their socks).

Know of any service man with hole(y) socks? The girls might come to his aid. They darn, darn awell!

LOGGER'S AX AND WE TELL 'EM

Last week a new column appeared on this page, a mere bumpkin of a column it was too, scarcely 2-inches tall. The writers went by the pen names Bevo and Hager, and they called their left-over wanderings of a couple of disordered minds, "I-Glass," which, judging from the information contained therein, could certainly have been nothing more than short for "I Glass we'd better give up!"

WANDERINGS OF TWO MINDS THAT NEVER FOUND THEMSELVES—by Bevo & Hager, Remember: The little dunce caps we used to wear in high school? bicarbonate of soda... the Pellopanesian Wars (bet you don't)... shooting spitwads in high school (bet you do, you little devils you) shooting craps in college... Franklin D. Roosevelt... Herodotus... smoked herring... Forget: Our last week's column... this week's too... the noise of clanking chains... clunking chains... the whistle of the weeds as they grow up during the night... that time you stubbed your big toe on the icebox... the green odor of the rocks... the sound of moss... it...

Commons Offers Variety in Menus

Are you ever curious as to where all the good food served at the Commons is made? Go for an adventure behind the large panels and you find mammoth ovens always filled with piping hot pies, and a large kitchen-aid mixing and grinding all kinds of meat for the ever popular hamburger. Toward the back there are two large refrigerators, one for meats, eggs and milk, the other for jellies and puddings. Further back there is a storeroom crammed full of various kinds of cans, sacks and bags, enough to meet the demands of 400 hungry students.

Mrs. Lamb, director of the Commons, says that "Everyone is welcome to look around and that if ever you have any ideas as to what you would like them to serve, be sure to tell them." She also suggested that when bringing our sandwiches get a bottle of milk or soup and eat our lunches together in the Commons.

in this corner



We have Betty Jane Pyle, better known as "B. J." who, with her sparkling pep and personality has made a name for herself at the Dorm as being "the helpingest gal." As a senior, B. J. has seen an active four years at the Logger school, participating in athletics and governing boards of the campus. A major in P. E. and languages, she now holds the position as secretary of ASCPS and of the Dorm, and is president of W. A. A. and treasurer of her sorority, Alpha Beta Upsilon.

"Basket ball is my meat," said our slim paragon, grinning and added that "I come from Yakima, 'the apple country,' (pardons to Mann and Wenatchee)."

Her plans for the future are not definite but we are sure that in some way they include Tom, protector of the Coast Guard.

Buy Bonds, Buy Stamps

Fifth Annual Joint Dance Held by Zetes, Delta Kapps

In an atmosphere of patriotism, the fifth annual semi-formal Delta Kapp-Zete dance is going to be held at the Tacoma Elk's Club this coming Saturday, October 24, from 9 till 12 o'clock.

The decorations consist of a large red cross surrounded by flags of both America and the United Nations. In keeping with the motif, the dance programs will be rectangular-shaped and have red stars upon a white background. The two Greek numerals will be printed diagonally across the front in blue carrying out the red, white and blue color scheme. Co-chairmen for the dance are Bill Causin, Delta Kappa Phi, and Bill Glover, Sigma Zeta Epsilon.

Bob Healy's orchestra will furnish music for the evening, and the patrons and patronesses will be: Dr. and Mrs. Warren Tomlinson, Dr. and Mrs. Charles Battin, Professor and Mrs. Frederick McMillan and Dr. and Mrs. E. D. Gibbs.

Delta Kappa Phi members and pledges planning to attend are: Frank Balmard, Tom Brown, William Causin, Paul Davis, Jack Duncan, Chet Dyer, James Frank, Robert Hamilton, Harry Hescoc, Herman Kleiner, George Lutz, Asa Maylott, Joseph Sands, Walter Seabloom, Dick Strom, Robert Strom, LeRoy Vaughn and Jack Bird.

Others are Frank Hanawalt, George Ellis, Paul Heuston, James Paulson, Robert Creso, Hollister Gee, Joseph Kiaduchak, George Miller, George Ottum, Robert Seabloom, Norman Willard, Richard Cromwell, Bill Ross and Art Hanson.

Guests of Delta Kappa Phi fraternity are: Betty Purdy, Mary Francis Johnson, Janis Eisenhower, Joyce Callow, Margaret Johnson, Lillian Cole, Beverly Velton, Hazel Heckt, Doris Merideth, Loretta Maynes, Virginia Taylor, Dorothy Howard, Lu Jean Logan, Ellen Swayne, Dorothy Backland, Marcelle White, Helen Pat Beem and Irene Corbett.

Also, Doris Nelson, Carol Webb, Mary McDonald, Marjane Lewis, Celeste Tohill, Dolly Byington, Lois Anderson, Janet Armstrong, Lucille Ludwick, Joan Stapleton, Phyllis Hine, Mimi Howell, Patricia Mason and Shirlee Miller.

Guests of Sigma Zeta Epsilon will be Ora Bronse, Priscilla Newswander, Shirley Trent, Lucia Klsducak, Edith Hagberg, Jean Westbrook, Gertrude Soinilla, Jean Hallen, Lois Rasmussen, Barbara Engberg, Vera Healy, Ruth Calloway, Thora Holden, Mary Cornell.

Beta Pledge President Leaves For East Coast

Sorority sisters presented Betty Heidinger Smith, Alpha Beta Upsilon pledge, with a yellow Tullis-man rose corsage when she left for Virginia, Monday evening, October 19, to be with her husband who is enrolled in officer's training school at Quantico. While at the College of Puget Sound, Mrs. Smith was known for her vocal work, and was elected president of her pledge class. Miss Jean O'Connor was elected to fill the vacancy. Janice Barnstable was elected vice-president and Mildred Blake, secretary-treasurer. Ellen Swayne is pledge mother.

Committee For Activities Created

Recently organized is a co-ordinating committee created by Paul Heuston for the purpose of passing on and regulating all student activities in Greek and Independent organizations. Members selected were chosen to give a fair representation from each campus group. The first meeting will be Friday noon, with Paul conducting the business.

Some of the activities which this group will sponsor and promote are the sale of defense stamps and bonds, and putting limitations in certain types of social events, such as pledge sneaks.

Members of the newly formed committee of which Elizabeth Pugh will act as chairman, are Helen Pat Beem, Jim Walter, Norm Anderson, Bill Causin, Bob Elliott, Walt Berg, Edith Ploeger, Bev Velton, Bob Starkey and Paul Heuston.

New Chapel Policy

Because it seems unfair to encroach upon an outside speaker's time, there will be no more student announcements of any sort in chapel. All announcements will be made by Dean Register to save time and confusion. Those organizations wishing announcements to be made, must turn them into the Dean by 9:30 of the morning they are to be given.

Concert Groups Added in Music Expansion Plan

A greatly expanded sphere of musical activity for the College is the policy this year of Prof. Leonard Jacobson, new head of the music department. In addition to the regular campus musical organizations, band, orchestra, the Chamber music society and the Adelpian Choral Society, several smaller instrumental and vocal groups are being formed to serve both at the College and at civic functions. Students interested in these groups should see either Prof. Jacobson or Mrs. John Green, new vocal instructor.

The need of more manpower to support music activities is urgent, however. This is especially true of the Adelpians, according to Mr. Eric Koker, director, who stresses the lack of tenors and basses. The Adelpians meet every Tuesday and Thursday from noon to 12:40. The group will not tour the state this year, as in the past, because of the war situation. More violin and viola players can be used in the Chamber Music Society, which meets every Monday evening at 7:30 p. m., also under Mr. Koker's direction.

Nearly all of the musical organizations on the campus will be represented at some time during the year on the College Vesper Series of afternoon concerts. The first concert of the series is scheduled for November 15, when Mrs. John Green and Miss Helen Smith, organist, will appear in a joint recital. Mid-December will see the first appearance this season of the Puget Sound Symphony under the direction of Louis Wersen.

Alpha Chi Nu Pledges Present Informal Paddle Promenade Trot

Paddle Promenade is the theme of the Alpha Chi Nu informal pledge dance to be held Saturday evening, October 24, at the Masonic Temple roof garden. Entertainment, surprises and refreshments are in store for guests, members and alums.

Decorations carrying out the traditional green and white colors will provide the setting for the center of attraction, a large fraternity emblem in gold and black. Clever programs, symbolic of fraternal

customs, will be in the shape of paddles. Novelty intermission numbers of singing and dancing will be presented by pledges, who are also planning surprise stunts for unsuspecting members.

Chaperones for the evening are Dr. and Mrs. Charles T. Battin and Mr. and Mrs. David Palmer.

Making general arrangements are Joe Kowalski, chairman; Wallace Hager, Cal Sandford, Dick Perkins, Ernest Goodyear, Ed Miller and Dave Granlund.

An incomplete guest list of the fraternity includes Eunice Waneer, Doris Jackson, Lorraine McConnell, Ruth Boyd, Marilyn Davis, Pat McKallips, Hanna Koehler, Elsie Hansen, Virginia Lacklow, Pat Bevi, Beverly Hofstetter, Shirley Milsted, Madelle Siper, Delores Johnson, Mary Louise Rogers and Robby Lee Roberson. Members planning to attend are Ed Granlund, Rolland Lutz, Grant Barber, Glenn Holmberg, Ralph McLaughlin, Ed Boch, Bob Hamilton, Jack Helms, Martin Wentworth, Ed Markuson and Norman Anderson.

Dr. Thompson to Speak At Willamette Homefest

Willamette university is planning to celebrate their annual Homecoming festival next weekend playing our CPS squad in the afternoon and honoring Dr. Thompson that evening when he will be guest speaker.

Theme of the homecoming this year has been chosen and named "Excuse It Puget." Several students from the college are planning to go down for the game and will remain as guests of the Saturday evening party. Tentative plans for the trip are being made by Jim Frank, LeRoy Vaughn, Helen Pat Beem, Marjane Lewis, Bev Velton and Kay Woods.

Mu Chi Sneak Is Successful

Mu Chi yearlings outsmarted the paddle-hackers in a dense soup Wednesday evening at the home of Dr. and Mrs. C. S. Berry of Lem-on beach near Day island.

Heated discussion was carried on between members and pledges as to who were the victors of the hunt. Wiley Mellish and Al Middlesworth, accompanied by Thelma Smith and Anne McCarthy broke in at 10:50 p. m. and insisted on victory for the "frat," forgetting that the deadline was 10:30.

All pledges brought one can of food—peas, carrots, bananas, beets and horseradish. The cans, minus their labels, were placed in one large stew-pot and boiled, after which guests took their chances at this, together with dog food, pineapple, ravioles and tamales.

Faculty guests were Dr. and Mrs. E. Delmer Gibbs. Those present at the affair were Mr. and Mrs. Alec Daly, Bob Heath, pledge pop, Mary Kay Hager, Lewis Abel, Mary Murush, Bill Barlow, Jo Mathews, Cliff Bach, Jean O'Conner, Tom O'Dore, Ellen Swayne, Peggy McKearney, Bob Dahl, Ted Christensen, Pat Berry, Gene Webber, Paddy O'Connell, Burt Wadsworth, Ruth Ann Dodsworth, Dennis Walker, Kay Copeland, Bob Cook, Dottie Backlund, Doug Rawnsley, Marcelle White, Herb Coombs, Bev Hofstetter, Howard Powers and Bev Phyllis Hine.

Zete Pledges Foil Members in Foggy Sneak at Camp Kilworth

Camp Kilworth was the scene of the successful Zete sneak Wednesday night. Twenty-five pledges and their dates enjoyed quantities of wieners, buns, potato salad, milk and an evening of dancing and games. All the while the members fruitlessly combed the fog that conveniently settled in as soon as the pledges were tucked away in their hideout.

By 7:30 the ostentatious caravan of nine cars wound down the hill from the Dash Point road (covered by members, Bye Bye Larson and Blind Man Beers), left their autos half a mile from the camp and covered the remaining distance by foot. It was at this time that the only threat to the pledge camp was made. DuCharme, the advance guard, came running in shouting, "to arms, the members are on the trail." Twenty-five pledges armed themselves with weiner sticks, rope, and axes and ran out en masse to scare the daylight out of two Mu Chis who had stumbled onto Zete cars while looking for their own sneaking pledges.

Dance programs for each member had been made out by Don Hoff. During intermission the group was divided into four smaller groups, or colleges. Bill McMaster and Barbara Engberg officiated as the opposing groups staged an indoor track meet.

"Toofless" Spike Ferguson, with the aid of star Larson, led his Xaviers to victory and into possession of long sticks of candy. Dr. R. Franklin Thompson judged the events and Mrs. Thompson was his cheering section.

The second half of the dance ended in time to make much revelry as the clock pointed to 10:30, the

Kappa Phi Has Fall Pledging

Within the reverent setting of the pink rose, lighted candle and green pine, Kappa Phi held its fall informal pledging last Tuesday evening, October 20, in the John M. Kittredge chapter room. Mrs. Lyle Ford Drushel was a special guest.

Mrs. Charles A. Robbins and members of Kappa Phi greeted new prospects as they entered the room. Anita Misener, past president, gave a talk on the traditional colors: blue, symbolic of truth, green, standing for loyalty and white, the emblem of purity.

Augusterodin, the French sculptor was discussed by Alice Clay. His composition, "The Hand of God," was used as a theme for the informal invitations made by Betty Irie, president of the group. Ruth Herrington, Gertrude James and Jane Thompson sang.

New Patroness

Mrs. R. Franklin Thompson, wife of the president, was announced the new patroness during the ceremony and received the ribbons with the other new girls. Other patronesses for Chi chapter are Mrs. Gilmore Nichols and Miss Helen Lewis. New pledges are Eileen Alexander, Janice Barnstable, Barbara Barrie, Marion Hinman, Eva Jean Lawson, Lu Jean Logan, Viola Maylott, Jane Shaffer, Jean Thurber and Murden Woods.

Kappa Phi National was founded in 1916 at Kansas university and has grown until it has 26 chapters on the various campuses. Chi chapter at the College of Puget Sound was voted into National in February, 1932, after one year of local work with a minimum group of 25. Miss Dorothy McGee and Mrs. H. A. Marrelson helped organize the local. Mrs. H. W. McCleary, former national president of Kappa Phi was installing officer and Miss Elizabeth Padfield was the first president on the CPS campus.

Mothers of Lambda Chi To Be Honored At Tea

Mothers of Lambda Sigma Chi pledges and members will be honored at a tea next Tuesday afternoon at 3:30 p. m. in the John M. Kittredge hall sorority room. The table will be centered with delicate fall flowers and slender tapers which will harmonize with other floral combinations.

Miss Beverly Velton is chairman of the affair and she will be assisted by Misses Beverly Hofstetter, Peggy McKerney, Arleigh Eshelman and Arlene Ferrier.

Buy Bonds, Buy Stamps

For Quality
SEE
HY MANDLES
& SON
Men's Clothiers
948 Pacific

★ Fine China
Sterling,
Crystal.
★ Jewelry of
distinction

GUNDERSON
ORIGINAL JEWELRY

Across from
Winthrop Hotel

ALL ROADS LEAD TO

Rhodes
950 Broadway

Oakes
APPAREL
921 Broadway, Tacoma

WATCH FOR THE
"SPECIAL" WINDOW
at
**Lucy Taylor's
Specialty Shop**
761 Broadway

RUGS

CLEANED AND REPAIRED

(also)
ORIENTAL and BROADLOOM RUGS
CARTOZIAN & SONS, INC.
759 BROADWAY MAIn 4224

TO BE APPRECIATED
GOOD PRINTING MUST BE SEEN
Drop in Anytime
Allstrum Printing Co. 714 Pacific

For that Special Corsage for
that special girl.

FARLEY'S FLORIST SHOP

has everything for that unusual corsage!

Orchids
Baby Orchids

Stephinotis
Gardenias

6th Ave. and So. Anderson

MAIn 1129

Quality Knitting Co.
Athletic Sweaters

934 Commerce St. MAIn 6581

Expanding our
Establishment and
Our Service to You

Modern Cleaners

2309 6th Avenue
MAIn 3292

PICK-UP and DELIVERY

COUZENS

featuring
**Vogue's College
Wardrobe**

911 Broadway Tacoma

SPELLMAN'S

Buster Brown Shoe Store
For Entire Family
1122 Broadway

New Coiffures just
for you!

Fisher's Beauty Salon
Mezzanine BR. 4242

All Wool
Argyle Plaid Sweaters
\$6.50
KLOPFENSTEIN'S
935 - Broadway - 937

FISHER'S
"Tacoma's Own Store"
For Amazing Dress Values visit
the Budget Shop, 3rd Floor

You'll Find What You Need in Shaeffer

Pens and Pencils

Leather Note Books and Paper

at

The Stationer's, Inc.

926 Pacific

927 Commerce St.

CPS Victor Over Lute Team, 14-6

Sunday morning quarterbacks got the shock of their lives last week when Coach Leo J. Frank's surprising Loggers took a smart 14-6 decision from the Baron's lute-fisk-loving Lutherans.

The victory was well-earned, as CPS superiority over PLC showed in every department except kicking. The Maroon and White literally out-passed and out-ran the Gladiators, who were beaten at their own game. The famed Lute aerial circus made little gain against the strong Logger defense, while Puget Sound passes raised general havoc.

Scoring started in the first period, when the Lumberjacks, led by Jack Spencer and Bill McMaster, passed and ran their way to a touchdown. The combination of Spencer to Bob Hutchinson, end, clicked innumerable times for good-sized chunks of yardage.

Maycumber Tallies

With the Lutes swarming over Hutchinson, Spencer tossed one to Bob Maycumber for 12 yards and 6 points, climaxing an 80 yard drive. Maycumber's place kick split the uprights.

Later, in the second stanza, PLC started to move. Sparked by Jack Brattle and Tommy Hoskins, the Glads passed and powered their way to the CPS 3, whose sub Fullback Dick Rupert bulled his way over. The attempted place kick was wide.

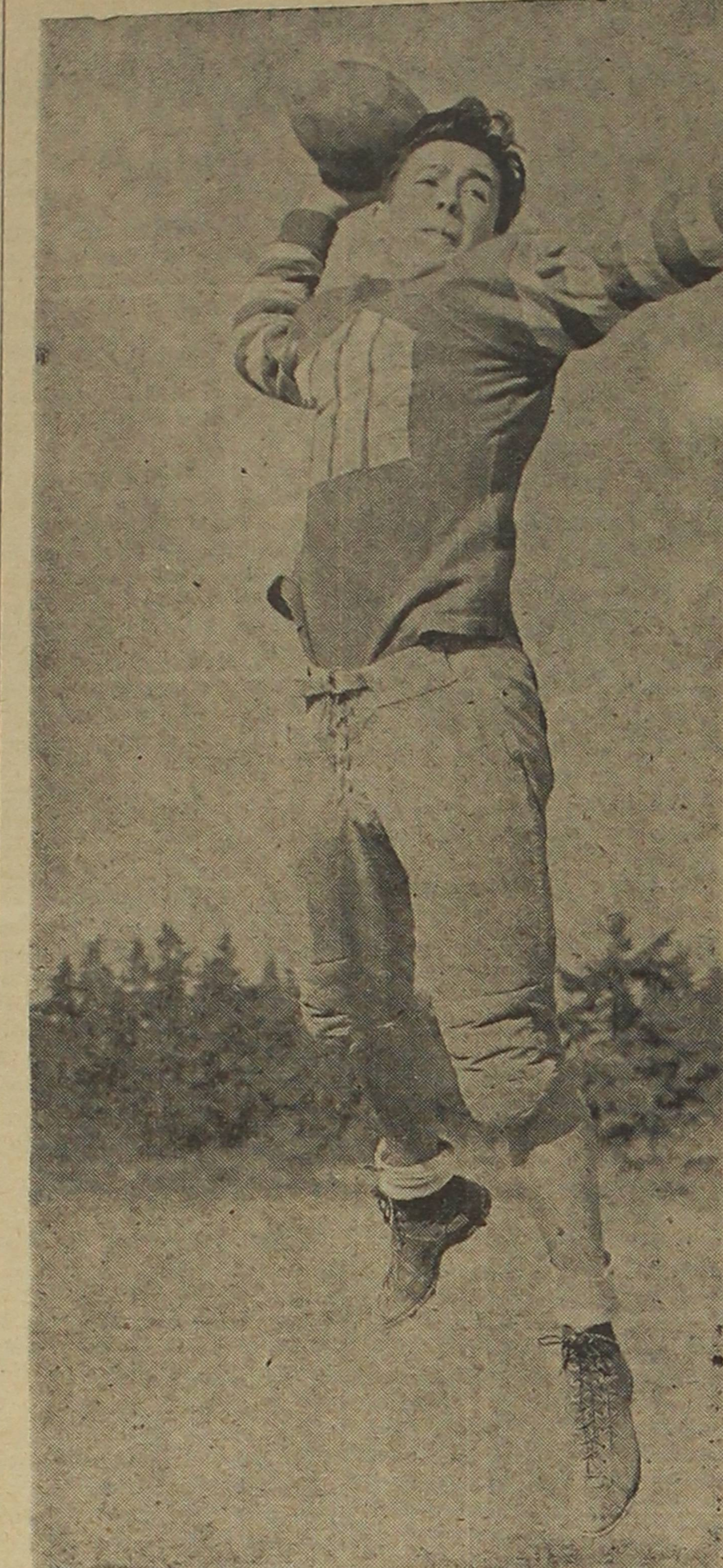
The Loggers held their one point lead during the third period and most of the fourth, and it looked as though that one point would be the margin of victory. Two CPS drives had stalled within the Lutheran's ten-yard marker; once the Parkland squad held four downs on their one-yard line.

With six minutes to go, the Baron's boys reached deep into their bag of tricks and came out with confusing lateral-pass plays which had the fans on their feet. Luckily, however, for the Maroon and White, Darrell Swenson, fleet-footed quarterback, snatched a Lute pass off his shoe laces and ran through the surprised PLC squad for 70 yards and another CPS touchdown. Maycumber's second conversion ended the day's scoring.

Crowd Disappointing

A disappointing crowd of only 2500 witnessed the tilt, which was played under perfect conditions. A dry field, blue skies and sunny weather made an ideal setup for the charity affair.

Statistically, the Loggers had the upper hand, making 16 first downs to the Lutheran's 10. Each squad completed 12 out of 24-pass attempts, with Coach Frank's men getting the most yardage. The Glads' poor pass defense was particularly noticeable on short thrusts over the center of the line, which were consistently good for 10 or 15 yards.



Above is shown Bill Gregory, promising CPS halfback whose speed has enabled him to gain a starting position on the Logger squad. Gregory's light weight prevented him from making much of a showing last season against heavier, more rugged opponents.

Poor punting on the part of the CPS eleven gave the Swedes a decided advantage in that department. Lute-fisk kickers averaged 45 yards.

Moral Victory, Too
Besides being a win in points scored, the game might be called something of a moral victory for the Lumberjacks. For loyal Logger fans, it was with a great deal of pleasure that they saw their favorites pin back the ears of the "wonder team," which in two short seasons had risen to national fame by producing three Little All-Americans and beating such major teams as Gonzaga university and Amos Alonzo Stagg's College of the Pacific eleven.

Maroon and White gridmen, who haven't had a really successful season for some years, grew tired of being kicked around and snubbed by Tacoma fans; so Saturday they took the opportunity to show John Q. Public a real brand of football, which will, incidentally, serve notice to other Northwest Conference schools that CPS is to be reckoned with this fall.

W.A.A.

By JEANNE McDOUGALL

As the third week of regular hockey practice is nearly completed, there are several outstanding players whose names should be mentioned. From the freshman class comes Shirley Black, a fighting forward, who's always in there. Robby Lee Roberson is a speedy player who seems to be able to play any position, as do Nelda Peterson and Betty Jean Pyle, upperclass players who really know their game.

The University of Washington has once more invited our hockey team to be their guests and play them soon. Even though no definite plans have been made, and the date has not been set, we consider it an honor to be invited. There will be a special turnout Friday at three for those wishing to go.

It has been rumored around that we might have a women's athletic field soon. That is just what we need. Maybe if we did have one, we could ask the University to be our guests for a change.

According to Fontell Gaddis, assistant archery manager, Peggy Simpson, Alice Clay and Helen Wilder really look good out there, and have been giving the other girls some pointers. Other girls who seem to be doing plenty good are Barbara Engberg and Lucia Kisduchak.

BUY UNITED STATES WAR STAMPS AND BONDS

Zetes Razzle-Dazzle Way To Top in Mural League

Last Friday saw the DK seconds bow to the Chi Nu's by the score of 1-0. The victory came only after a hard fought overtime period that ended with the ball in the Kapp's territory.

Monday's tangle between the Independents and the Omicrons seemed destined to overtime also, but the Indies passed into pay dirt in the last 40 seconds of play. The ball was deep in Omicron territory when Rowan of the Independents flipped the ball to Paul Pruitt in the end zone for the score. A jump pass over the center of the line was good for the extra point giving the Indies a 7-0 win.

The first game of the double header played Tuesday gave the Chi Nu's their second overtime victory when they touched the Independents for a 1-0 score.

Zetes razzle-dazzled their way to a 31-0 win over the D K's in the second game. Cross passed to Bart Wood who slide-stepped Lutz for the first score. The second score was another Cross pass, this time to Brown in the end zone. They repeated the process for the only extra point in the game. On the third touchdown play "Uncle" Tom again passed to Don Brown, but this time Brown lateralled to Joe Gagliardi who stepped across for the tally. Number four came when Cross tossed one to Al Danielson who lateralled to Bart Wood, and he sped across for his second score of the contest. The last tally was the result of a pass from "guess who" to Danielson in the end zone.

Sport Week Fete Planned by Women

Definite plans have now been made for The Big Sport Week which is to precede Homecoming week-end. This is a week of fun which is sponsored by the physical education department, and one of its purposes is to get everyone in the spirit for Homecoming.

Monday and Wednesday noons there will be exhibition hockey games. On Tuesday such famous archery stars as Arliss Wilder, Jane Shaffer and Ruth Herington will perform and many others. Thursday will feature one of those always exciting touch-tackle football games during the noon hour, and in the afternoon at the YWCA the sororities will compete for honors in the second inter-sorority swimming meet of the year. Finally, on Saturday we will have the REally big event of the year. The annual Homecoming game. The entire physical education department is working to make this week a big success, and perhaps an annual event.

from where we sit

CPS 14—PLC 6. Nice going Loggers! It was worth a whole year's waiting.

Bob Maycumber, Maroon and White end, came plenty close to predicting that score. The tall, smiling Puget Sound captain said the count would read 20-6. If (there's that old word "if") the Lumberjacks had put that ball across when they had it on the one-yard line, Robert's prediction might have been exact. On the other hand, if the Glads' line hadn't held, Swenson might not have intercepted that Lute pass for a touchdown. Oh, well.

Basketball again is close at hand. This year the Loggers will have a good supply of talent, but may be void of a schedule, owing to tire and gasoline shortages. The team will probably be limited to several battles with St. Martins and PLC, and any other home games obtainable. A number of contests with service teams, and maybe a few short trips will complete the schedule.

Tom Cross will be back as an aid to Coach Frank at turnouts, and although Tom is ineligible under Northwest Conference rules, the team has withdrawn from the loop so he may see considerable action. Other lettermen back will be Bob Loftness and Al Danielson, one stripe winners at center; Lloyd Balsinger, two-year forward; and Don Brown, double numeral winner at guard. It is doubted, however, that the latter will play this season as he will be leaving for medical school next semester and in preparing for it, will be too busy to turn out this semester.

The squad will be bolstered by several promising freshmen, some of the most likely being: Tom Loran, Holly Gee and Joe Gagliardi from Lincoln high school; Don Hoff from Astoria, Oregon; and Norm Willard from Chehalis. All-in-all the casaba followers haven't much to look forward to this fall, as Coach Frank may be called into the service, but if the hoop squad can lick PLC as the gridders did, the season will be a success.

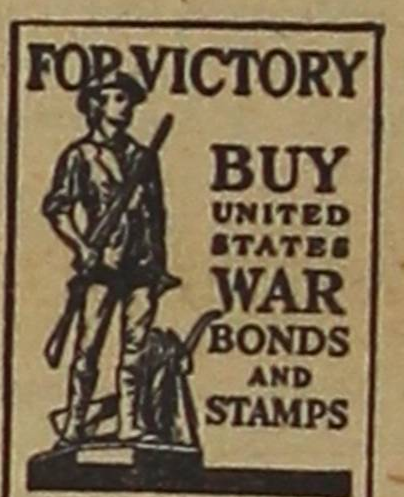
The invincible Zetes are on the march again. Although not quite as big and tough as last year's aggregation, they are better organized and continue to trample their foes by sizeable margins. The Chi Nus, at the end of the season decision will probably hold second place. Tuesday the Blackshirts practised on the Delta Kapp seconds to the tune of 31-0. The latter's first team, supposedly another strong opponent, barely skimmed over the unpractised Independents in an overtime 9-7. Yes, sir, it's Sigma Zeta Epsilon in football again this year!

The Axmen couldn't have picked a better date for their coming tilt with Willamette. After three victories, including a tough PLC game, Coach Frank's squad will have an open week end before their engagement with the Bearcats. This will give the "iron men" a much-needed rest as well as a few extra days to correct little mistakes made Saturday. (If there were any!) The break in the schedule came as a result of the cancellation of the Linfield contest. The Wildcats have limited their program to a few games close to home this season. The Maroon and White has been fortunate on the casualty proposition as no one has been laid up for any length of time.

With everyone in top shape and eleven fighting hearts, the Loggers may be the bitterest pill of the season for the might men from Salem!

Jean Wright Engaged

Miss Jean Wright, freshman student at the college last year and a member of Delta Alpha Gamma sorority, announced her betrothal at a recent meeting with the traditional five-pound box of candy to Mr. Don Hatch, formerly of Edmonds and now in the armed forces. Jean left two weeks ago for a short visit in California.



FROSTED MALTS 10¢
Yes—at the
Proctor Ice Creamery
3313 No. 26th St.

Send the Boys Photographic Christmas Cards, made from your favorite negative.
CRYSTALIKE PHOTO SERVICE
512 So. 9th BR. 3073

GOOD FOOD
and
QUICK SERVICE
at
CROOK'S DRIVE - IN
Conveniently located on the South Pacific Highway

ASK FOR...

Served by Your
Commons Lunchroom

ROLLER SKATING
every nite except
Monday.
Sunday afternoon
matinee
Roller Bowl
8006 S. Tacoma Way

HELP WANTED
Girls or Boys for Short Shifts
or week-end employment
Model Grill
912 COMMERCE ST.
MAIn 7241

BROADWAY BOWLING
739 BROADWAY
BOWL
For Fun
ANY DAY OR NIGHT
ALWAYS A CROWD

COMING ATTRACTIONS
COLLEGE PINS — COMPACTS
RINGS — LOCKETS — BELTS
THE COLLEGE BOOKSTORE

FOR A TREAT AFTER THE GAME
BEVINGTON'S TRIPLE XXX BARREL
924 PUYALLUP AVE.

SIXTH AVENUE BOWLING CENTER
2805 Sixth Ave. MA 5272
BOWL FOR HEALTH
BOWL FOR EXERCISE
BOWL FOR FUN

Campus Styles
moderately priced
Sears, Roebuck and Co.
BROADWAY AT 13TH
Phone BR. 4232

BUY "V...-MAIL" at Eastman Kodak Stores 910 BROADWAY

LEATHER HALF SOLES
For lasting shoe wear try our half soles. Men's, women's children's shoes repaired at this low price. Always top quality, and charge it if you like. **99¢**
Fisher's Shoe Repair
downstairs in Fisher's Dept. store

Now—more than ever... YOUR CAR NEEDS **Dale's Service Station**
Sixth Ave. & So. Pine St. MAIn 5071

THE MECCA RESTAURANT
FOR FINE FOOD
1156 Broadway — Tacoma

ANDERSON Printing COMPANY
750-58 Commerce Street BR. 2269

SKATIN
0 to 12:15 SATURDA extra noon
2 to 2 p. m.
Lakeview
manager, John J