

## TRUSTEES APPROVE \$100,000 RESIDENCE HALL FUND

### GRANTS BY CENTRAL BOARD WITH COLLEGE AID PERMITS PURCHASE

Programs Will Become Weekly Feature; Tentative Schedule Planned by Board, Students Invited To Participate

Made possible by moneys appropriated by the College central board, the first of a series of student radio broadcasts goes on the air at 11:30 this morning for a period of fifteen minutes over KMO. Loud speakers purchased with the funds will send the program from the sorority rooms and the Trail office.

One hundred dollars was granted by the board with 50 as a subsidy from the College to purchase broadcasting equipment to be permanently installed here. Broadcasting of student programs will be on weekly schedule from 11:30 to 12 noon each Friday.

Controlling the planning for all radio work will be a board provided by Central Board and headed by Bob Sprenger with Dr. M. R. Shafer as faculty adviser. On the board are Ruth Jensen, Wilfred Woods, and Dick Sloat.

Each month a broadcast will be put on the air from the College auditorium at the chapel period. Next week the pep rally will be held at that time preceding the homecoming parade and the reunion. Scheduled for November 3 and 10 are the International Relations club and musical programs; three student audience broadcasts on November 17, December 15, a variety program, and January 26.

Students of the College are cordially welcome to participate in the making of all entertainments and plans of the radio board, Sprenger announces.

### Who's Where Coming Soon

With funds donated by the Associated Student Body treasury, 700 free copies of Who's Where will soon be published, it was announced by the Central Board at a meeting held Monday, October 16.

The board appropriated \$85.50 for the annual booklet containing the names, addresses, telephone numbers of students, faculty members and fraternity houses; the officers of the student body, information concerning various school clubs; and other activities of interest to the students.

The pamphlet will be edited by a journalism class and will be printed by the Dammeier Printing Company.

#### PUGET SOUND CALENDAR

- NOW . . . Tune in on KMO, 11:30-11:45, for International Relations Club broadcast.
- TODAY . . . Dance and recreation program from 1 'till 4 p. m. in Gym.
- TUESDAY . . . Motion picture, "Trees and Men," shown in Bus. Adm. classes 3rd and 4th periods, thru courtesy of Weyerhaeuser Sales Co., open to all students. Room 204.
- THURSDAY . . . First performance, "Cat and Canary" homecoming play, 8:15 p. m. Jones Hall.

### HAS PLAY LEAD Siegal, Egley Initiate Series



Fritz Siegal, violinist, Uwarda Egley, modernistic dancer, and the Repertory Players in Hamlet will be presented on the Artist Series this year, according to the student faculty committee. These three features are included on one ticket, which is now on sale for one dollar. Only 600 seats are available, so anyone interested should purchase his ticket as soon as possible.

Fritz Siegal, formerly concert master with the Chicago Civic Orchestra, and for the past four years concert master of the Illinois Symphony Orchestra, will present a violin recital on Nov. 8 in the college auditorium.

Uwarda Egley, prominent modernistic dancer, will appear sometime in February. She has won high acclaim from critics in the East. She attended the University of Washington, Cornish, and Mills.

The Repertory Players in their version of Shakespeare's "Hamlet" will be presented sometime in April.

TAD BURD, talented Sophomore playcrafter who will appear as Susan in "The Cat and the Canary" next Friday night in Jones Hall at the annual Homecoming reunion. Miss Burd received her theatrical training at Pasadena School of the Theater, Pasadena, California.

### War Kept Sophs Taylor, Campbell Out of American University in Syria

Although the war prevented them from reaching Beirut, Syria, their destination, Bob Taylor, sophomore, and "Duke" Campbell, sophomore, spent a thrilling two months in Europe this summer. These two aspiring college men had planned to attend an American university in Beirut, but its doors were closed as soon as war seemed inevitable.

Working their way across the Atlantic as extra hands, Bob, Duke, and Bill Jacobson of Milton, Washington, sailed from Olympia last July 14 on the S. S. Moldanger, a Norwegian motorship. En route they spent a sojourn of three days at the San Francisco exposition. They passed through the Panama Canal and were half-way across the

Atlantic when they were struck by news of the approaching war.

Duke disembarked at Antwerp, Belgium, where he left for Paris, while Bob and Bill regained their "landlegs" at Amsterdam, Holland. These two had intended to make a bicycle tour of Europe, but those plans were given up, too. Jacobson left for Norway where he has since been stranded, and Taylor attempted to bicycle to Switzerland by way of Germany. He met some university students from Seattle, who soon discouraged this suicidal plan. Not dismayed, however, Bob obtained passage on the last train crossing the Maginot line into Switzerland. A few days later, he found himself in Marseille, France, hopelessly attempting to

### \$1,000 ANONYMOUS DONATION TO PROMOTE BUILDING DRIVE

Wing to Present Women's Residence Hall, Men's Hall and Library Plans Discussed; Officials of Board to Keep Posts

### BIOLOGISTS PUBLISH PAPERS

Research Findings Of Slater, Colleagues Circulated

Putting in circulation this week five papers under the name of "Occasional Papers, Department of Biology, College of Puget Sound" Professor James R. Slater and students in the biology department have begun a series of publications of findings in biological research in the college.

These papers are listed separately under five titles, "The King Snake in the State of Washington" by Murray L. Johnson, "Some Species of Amphibians New to the State of Washington" by James R. Slater, "Amphibians and Reptiles of the Islands of the State of Washington" by James R. Slater and Walter C. Brown, and "The Pacific Terrapin in the State of Washington" by the same authors.

Professor Slater has gained recognition among biologists of the colleges and universities of the nation for his research work which has been published in Copeia and Hepetologica national journals on the subject of the lower vertebrates. Professor Slater is an authority on amphibia of the Pacific Northwest.

obtain passage into Italy. Failing to do so, Taylor left Bordeaux on the S. S. Washington, arriving in New York Oct. 12.

During this time, Duke had also been confronted by a series of complications. He sailed from Marseille to Beirut on an export vessel, only to be refused admittance to the city, and to discover the American university

Authorization of proceedings to raise money to the amount of \$100,000 was voted by a meeting of the board of trustees, Wednesday, October 18, for the purpose of building a second unit of the Women's Residence Hall, according to a report issued from the office of President Edward H. Todd. It was also revealed that an anonymous pledge of \$1,000 was made by a member of the Board of Trustees at that time in launching the drive for funds.

Tentative plans for a residence hall for men and a library were also discussed and authorized by the board. No changes in offices were made.

In a statement to The Trail, Dr. Todd maintained that the building program of the college has just begun. He also said that the present time is the most favorable for work both financially and in consideration of the amazing growth in student registration and the fine spirit of the student body.

### Point of View Moves Scribe

The Trail certainly gets around! It seems that an inter-collegiate debate has been started by the Cheney-CPS sports editors' bandying of words over the former's remarks about the futility of CPS even playing football! I might keep things going by saying: "Sure, the normal schools ought to have good teams with their eligibility rules! They ought to have better teams than they do! The truth is that they don't have any rules. Under their system any one can transfer to their school and play football right away. Even Glen Cunningham could run on their track team!

had been closed for a month. Thus, without landing he made a continuous journey from Beirut to Boston, where he docked Oct. 2.

Both boys are now "seeing America second." Campbell drove to Los Angeles with a friend and is spending several weeks there with relatives. Taylor will arrive home shortly after a three-week stay in New York. Both boys will return to CPS next spring.

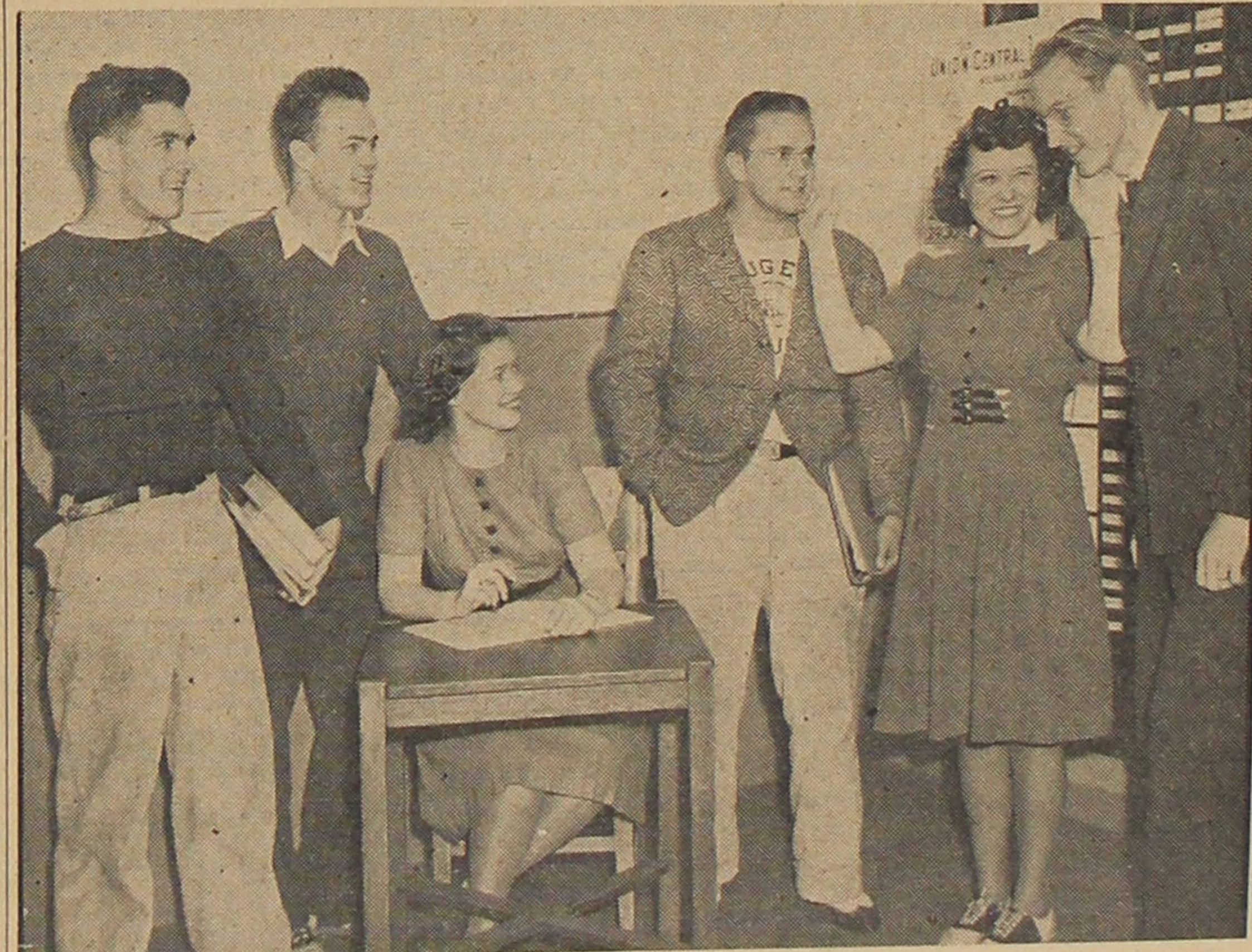
### Kohler Discusses Art, Architecture

European art and architecture were discussed by Prof. Melvin Kohler during the meeting of the meeting of the College Art Club, Tuesday, at the Tahoma apartments.

Pottery, small sculptures and reproductions of paintings which Prof. Kohler obtained on his European tour of last summer were displayed.

#### THEATER PASSES AT BOOKSTORE

Students and faculty members are urged to buy their tickets to the main downtown theaters at the bookstore. A limited number are on sale at reduced prices. First come, first served.



Janet Hatch passes on candidacy of College men Bill Moore, Jack Hungerford, Emery Wattle and Nell Richardson for the annual Homecoming beard growing contest, while Gwen Roach looks on. Yes, girls, the boys are plenty smooth!

### Hannawalt Elected To Debate Manager Post

Frank Hannawalt was elected freshman debate manager by the Central Board at a meeting held Monday, October 16.

The degate schedule announced for the semester will include the intra-college tournament on Nov. 2; and on Nov. 18 a practice tournament, to which will be invited Seattle Pacific college and Seattle college at Seattle, St. Martin's college at Lacey, Pacific Lutheran college at Parkland, Gray's Harbor Junior college at Aberdeen, and Lower Columbia Junior college at Longview. This tournament will consist of debate, extemporaneous speaking, and oratory.



# The Puget Sound Trail

Established Sept. 25, 1922 Published During School Year

Official Publication of The Associated Students COLLEGE OF PUGET SOUND



Printed by Dammeler Printing Company, 930 Commerce St.

Entered as second-class matter at the Post Office at Tacoma, Washington, under the Act of Congress of March 3, 1879.

Subscription price, 75c per semester; \$1.00 per school year by mail

## EDITORIAL STAFF

**EDITOR** JOHN POLING  
**Associate Editor** Roy N. Lokken  
**News Editor** Bill Conser

**REPORTERS**—Jan Richard, Beth Hardy, Jim McClymont, Laurence Brown, Frank Lowther, Helen Gessaman, Nan Weber, Mary Katherine Hager, Keith DeFolo, Arliss Wilder, Anna Jonezyk, Sylvia Langdon, Eleanor Weaver, Mary Mladinov, Willard Hedden, Bergette Hansen, Pat Davis, Betty Cleary, Marcia Frost, Kal Furlong.

**Feature Editor** Bill Stewart

**SPECIAL WRITERS**—Phil McElwain, Sonya Loftness, Jeanette Hart, Earl Mamlock.

**Society Editor** Kay Sutherland

**REPORTERS**—Rosalee Siegler, Jane Sorensen, Anita Sherman, Dorothy Howard, Mildred DeSpain, Betty Bradley, Harriette Bradford, Virginia Mason, Mary King, Nan Standish, Norene Stendal.

**Sports Editor** Bill Melton

**REPORTERS**—Bob Myers, Vera Healy, George Mitchell, Bill Dickson, Bob Hutchinson.

**Copy Editor** Ed Hungerford

**READERS**—Bert Poling, Delbert McBride, Dorothy Royn, Jack Seltzer, Virginia Lantz.

## BUSINESS STAFF

**Business Manager** Sherman Jonas  
**Advertising Manager** Mark Porter

**SOLICITORS**—Dorothy Wolff, Jean Murnen, Jane Lund, Mary Katherine Hager, Martha McNeill, Louise Shay, Connie Coleman, Cliff Rawnsley, Mary Jane Lewis, Wyona Diemer.

**Circulation Manager** Genevieve Hicks  
**Assistant** Jean Murnen  
**Faculty Adviser** E. T. Short

Thought for the day—The way of a fool is right in his own eyes; but he that hearkeneth unto counsel is wise. Proverbs 12; 16.

"Nine-tenths of wisdom is being wise in time."—Theodore Roosevelt.

## TIME TO THINK

A favorite topic of Mr. William Randolph Hearst's editorialists in those startling Sunday supplements which enlightened young individualists scoff at but read is urging people to use their mental powers and think.

Now that sentimental blood is being let and emotional brains are being displaced by sterner stuff "somewhere in Poland" and elsewhere Mr. Hearst's editorial pleas don't sound so bad!

Thinking is a hard job these days and speakers find it tolerably easy to gain their ends by playing prejudice and opinion against common sense. When such is true in a college audience the odds against the less educated bulk of the public retaining sound views on international affairs are too great to withstand. The sentimental drivel and genuine ignorance of situations behind the news published for public consumption is appalling. It must be said, however, that reports of the larger press associations are usually fair, at this time.

Our supreme hope in remaining neutral rests in the hands of active thinking people who know what United States Congressmen and Senators are for.

Because of the economic factor in American International relationships American neutrality in this ridiculous war is a vital question. American college students must weigh their thoughts carefully in thinking through this problem of "Peace at any 'dollar' price!"

In view of Colonel Lindberg's recent statement that he did not believe the war in Europe to be for the preservation of democracy by France and Britain peace is worth whatever we have to pay for it.

## BEING NEIGHBORLY

Robust shoulders, and a handsome class of beefy, intelligent men in the hands of a coach whom men like have made the College football team this season one for athletic foemen to reckon with.

The chapel this week in which the student body met its team for the first time was charged with the spirit of the will to win and to play the good game in doing it. Our only regret is that the game last night and the Homecoming combat are alone on the schedule for Tacoma performance.

To enlarge our home schedule The Trail voices campus opinion in boosting for a continuation of the hard fought, closely won duel of last year with our growing neighbor to the south, Pacific Lutheran College. Before a record crowd in a heat of enthusiasm the Loggers and the Gladiators played a game on that occasion which was a College classic.

That Pacific Lutheran College is a progressive institution with a future is backed by the western national division of the Lutheran church. Now is the time to begin friendly academic and athletic relationships between the two colleges.

## Trailing Tunes

By Phil McElwain

Did you know that: The song "Margie" was named after Eddie Cantor's first daughter. It all goes back about 20 years or more. One of Eddie's real pals, an aspiring young songwriter named Con Conrad, had just written the melody to what he termed a "sure hit." But alas! There were no words, and what's more — no title. He had just about given the song up when one day Eddie Cantor brought him over to see the new baby. "What are you going to call her?" Conrad asked. To which Eddie replied: "Marjorie—just Margie for short." That was the inspiration needed, for right then and there Conrad sat down and completed the song that was destined to live forever.

Another "Shadrack"? Larry Clinton, whose recording of the swing spiritual "Shadrack" was largely responsible for the popularity of that tune, had been working on a new spiritual called "Hezekiah," which is the story of the handwriting on the wall. He spent two entire days in the New York Public Library looking up the information and data needed for "Hezekiah." The Clinton recording has just been released, and Larry modestly admits it's one of his better discs.

**Jottings:** A song that tells of summer souvenirs: "The Last Two Weeks in July" . . . Put it down now to hear Harry Warren's new rhythm air "Put That Down in Writing" . . . Don Ameche will soon appear as Stephen Foster in "Swanee River," a film reviewing the life of the great composer, and it will contain all of his immortal melodies . . . Looks like "Day in—Day out" is headed for No. 1 spot . . . One of the better ballads is the song "For Tonight" . . . Word has it that Germany has adopted "The Beer Barrel Polka" as the national anthem . . .

Take it from the Broadway song pluggers, it's a happy day when Guy Lombardo agrees to introduce a new number. The reason is that Guy's uncanny judgment of icking hit tunes has built for him quite a reputation.

## Current Culture

By Sonya Loftness

The European maestro, Toscanini, gave the NBC radio audience a thrilling opening concert with the performance of Schubert's Unfinished Symphony and the tone poem Don Juan. This week he directs the orchestra in the prelude to Die Meistersinger, a double concerto for violin by Brahms, a contemporary work, Die Nacht by George Templeton Strong. Saturday night, 7 to 9.

The most amusing painting in the gallery show is David Burlin's Homeward Bound. The Russian artist uses a daring technique, splashes his canvas with gobs of paint direct from the tube.

The week-end concert of the New York Philharmonic will be an all-Wagner program and includes the Good Friday music from Parsifal, four extracts from Die Meistersinger, an excerpt from Gotterdammerung, and the overture to Tannhauser. Sunday, twelve to two.

**RAGSDALE'S**  
Proctor Pharmacy  
(KELLING NUT SHOP)  
Butter Toasted  
26th & Proctor PR. 0571

STOP at  
**DOC HAGERSON'S**  
FOUNTAIN SERVICE  
CANDIES  
2511 Sixth Avenue

## USE DOUBLE CAST IN "2ND CHILDHOOD"

In their "Second Childhood" two young heroes, Bill Melton and Phil McElwain, as Phil, will woo Anita Sherman and Peggy Steele as Sylvia. This romantic tangle comes through the use of two casts for the Frosh-Soph play Nov. 10. Dorothy Padfield, student director, announces the casting as follows; Professor, inventor of "Fountain of Youth" elixir, Keith DeFolo and Bill Stewart; Auntie, Regina Hoover and Dorothy Howard; General, David Davies and Bill Brown; Marcella, Esther Sandstedt and Kay Woods; Mrs. Vivert, Ruth Pauline Todd and Margarita Irie; Judge, Rolland Lutz and Ed Hungerford; Mrs. Henderson, Betty Thralls; Lucile Norton, Patricia Glover; the Sheriff has not yet been cast.

## MELTON REVIEWS HOMECOMING CAST

(Continued from Page 1) character he brings to life next Thursday.

In the field of theatrics, Wilbur Baisinger, junior, is by no means a novice. He has appeared before Puget Sound footlights in "The Fool," "The Perfect Alibi" and "Bury the Dead." The role of Roger Crosby, lawyer, is filled by him in this year's Homecoming play.

With a year at the School of the Theatre at Pasadena behind her, and parts such as Kay Hamilton in "Stage Door" at Whitman to her credit, Tad Burd, sophomore transfer, seems not unqualified to take the part of Susan in "The Cat and the Canary."

## TRAIL BLAZER

By Bill Conser

THIS WEEK . . . heralds the beginning of a regular College radio program, made possible through the efforts of an enterprising faculty committee and our Central Board. We ask for the opportunity, it is ours . . . now to make CPS a highnote of the air waves!

Central Board proposed the excellent motion to immediately present the president of the student body the president's ring, a token of appreciation previously presented at the close of his term. This may well become a traditional badge of office and should be worn by our student leader during his term.

Who's Where has been assured the College by the action of Central Board . . . and for the first time, free distribution!

The Trail is published by a new editor, John Poling, and a reorganized and enlarged staff, totaling 62 students. Cast a glance at the masthead and note our assurance of a better and more complete newspaper.

The Campus is enthusiastically preparing for the greatest, super-colossal Homecoming celebration staged since Nero kindled Rome!

Despite increased appropriations for their activity, the Adelpian Choral Society is having difficulty in planning their scheduled tours of the Northwest because of the short absences of the members from their regular classes. The college has grown to depend upon the chorus to represent them before many high school and community audiences . . . we hope this situation may be successfully ironed out!

**QUALITY KNITTING COMPANY**  
Makers of  
Fine Sweaters  
934 Commerce

FOR A GOOD TIME  
AFTER THE GAME  
Meet at  
**DON'S PAGODA**

Come in and see "Sir Jack"  
\$10.95  
—Men's Dept.  
**FISHER'S**  
"Tacoma's Own Store"

## Puget Sound Singers Invite Music Lovers to Participate

By Jan Richard

Music lovers, are you taking advantage of all of the opportunities that CPS is offering you? Do you like to sing? If so, join the Puget Sound Singers, who meet every Tuesday and Thursday noon in the auditorium. If you play an instrument you are invited to attend the string ensemble practice every Monday evening at 7:30 in the conservatory, or to be present at the band practices, which are held first period on Tuesday and Thursday. We hope that all of you will attempt to turn out for one of these groups, for we all must help build CPS by helping to build up our music department.

Last week students who are studying voice under Professor John Paul Bennett began to practice solos adapted to their own particular voices. One of this group was Miss Annabelle Lemm, who has studied under Professor Bennett for three years and who will be long remembered for her outstanding rendition of the contralto solo in "I'm Happy Anna,"

Her portrayal of Susan, catty old-maid who believes in spirits, is something to watch and be inspired by.

A comparatively newcomer to CPS audiences is Mildred McKenzie, junior, who has appeared in but two college productions—"Jazz and the Minuet" and "Bury the Dead." Her third role will be that of "Mammy" Pleasant, West-Indian house-servant to the West family. Rehearsals show that Mildred is another one doing a fine job in the "Cat and the Canary."

Now in his second year of entertaining college play audiences, Charles Swanson emerges as Hendricks, insane-asylum guard, in Thursday's play. Chuck took a major part in last year's Freshman class play, "Three's a Crowd," and a minor one in "Bury the Dead."

A transfer from Los Angeles City College, Ernie Heassler, Freshman representative in the Homecoming play, is a newcomer to the ranks of CPS dramatics. Having played leads in "Big-Hearted Herbert," and "Tom Sawyer" he seems well-qualified to take the role of Dr. Patterson in this year's annual mystery play.

The hands behind the curtain, as announced by Neil Richardson, are: Assistant Dramatics manager, Wilbur Baisinger; student director, Dorothy Padfield; stage manager, Clair Hanson; electrician, Willard Bellman; prompter, Patricia Calvert; advertising and publicity, William Melton; scenery designed by Clair Hanson, assisted by Cyril Hanson and Ruth Jensen; property committee, David Davies, Anita Sherman and Ruth Pauline Todd; programs by Ruth Jensen; make-up, Jack Leggee, Doris Wittren and Tad Burd; stage effects, Robert Sprenger; assistant directors, Mary Ellen Peterson, Inez Leland, Dorothy Howard and Betty Thralls; ushers Knights of Log and Spurs; posters, Francis Cole; tickets, Barbara Longstreth, Audrey Albertson and Margarita Irie.

AFTER IT'S ALL OVER  
Drive to the  
**TRIPLE XX BARREL**  
On So. Tacoma Way

NEW  
**RAINCOATS**  
\$5 & up  
**KLOPFENSTEIN'S**  
936 Broadway 937

WHY NOT DROP IN TO THE  
**THE COMMONS**  
After "The Cat and the Canary"  
Thursday, Oct. 26 and Saturday, Oct. 28  
TABLE SERVICE  
New Fountain Varieties

which was sung last year by the Adelpian Choral Society.

On Tuesday of this week Miss Lemm had the honor of singing at a large city-wide church tea. The selections which she presented were, "Karmena Waltz Song," and "When Love Is Kind." She was accompanied by Walter Hopkins, a fifth year student at CPS, who is also majoring in piano.

## The Test Tube

By L. A. B.

### PSYCHOLOGY

Stretched on his back on the table in a most convincing attitude "Mitch," at first glance seemed dead. His face was covered with a serene and contented look. He had, if he was dead, died in peace.

This is what the reader would have thought if he had stepped into Professor Sinclair's room fifth period on last Friday afternoon. The explanation of this is simple. The Applied Psychology lab was in session and Dr. Sinclair was teaching them, with George Mitchell's assistance, how to relax. The process is called revitalization.

### PHYSICS

Dr. Seward was explaining the process of rotational motion. Outside in the hall an intelligent freshman was trying his best to whistle Alma Mater off-key. Dr. Seward turned and said to Yoshiteru Kakano, "Go out there and tell that young man to either take lessons or learn to sing." Kawano arose and with a smile on his face asked, "What'll I do, Prof., if the guy's bigger'n I am?"

### CHEMISTRY

Dr. Huffman and Dr. Fehlandt last night attended the meeting of the Puget Sound branch of the American Chemical Association. It was held in Bagley Hall at the University of Washington in Seattle. The program was directed by Chairman Earl Thompson, who showed some photomicro graphs taken by means of polarized light to show the stress, strain, structural defects and breaking point of varnish films.

The nurses' class this year has been in a predicament, coming from the T. G. only to find that there were too many freshmen in the freshman lab class for them to participate. Dr. Fehlandt solved the problem by moving them into the organic lab. This arrangement was all right for the boys in the organic lab, for they have noticed the extraordinary "good looks" of the gals. Fehlandt refuses to comment upon the young ladies' good looks and—but does say, "They are the best nurses' class I have ever had—scholastically."

**GASOLINE - OIL - TIRES**  
**BATTERIES AND ACCESSORIES**

**DALE'S SERVICE STATION**

Sixth Ave. and So. Pine  
MAIN 5071  
LUCY SPAETH

**KODAKS**  
and  
Everything Photographic  
Eastman Kodak Stores  
910 Broadway

**HARDWARE CO.**

Proofs Submitted!

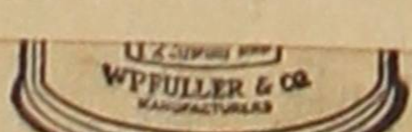
First Floor

**Lakewood Ice Arena**

Manager, John Johnson

LA. 2144

SIXTH AVE. and So. Pine  
MAIN 5071  
FRANK LARSON



0 to 12:15  
SATURDAY  
extra noon

2 to 2 p. m.;

SKATIN

REPORT

SKATIN

SKATIN

SKATIN

SKATIN

SKATIN

SKATIN

SKATIN

SKATIN

SKATIN

SKATIN

SKATIN

SKATIN

SKATIN

SKATIN

SKATIN

SKATIN

SKATIN

SKATIN

SKATIN

SKATIN

SKATIN

SKATIN

SKATIN

SKATIN

SKATIN

SKATIN

SKATIN

SKATIN

SKATIN

SKATIN

SKATIN

SKATIN

SKATIN

SKATIN

SKATIN

SKATIN

SKATIN

SKATIN

SKATIN

SKATIN

SKATIN

SKATIN

SKATIN

SKATIN

SKATIN

SKATIN

SKATIN

SKATIN

SKATIN

SKATIN

SKATIN

SKATIN

SKATIN

SKATIN

SKATIN

SKATIN

SKATIN

SKATIN

SKATIN

SKATIN

SKATIN

SKATIN

SKATIN

SKATIN

SKATIN

SKATIN

SKATIN

SKATIN

SKATIN

SKATIN

SKATIN

SKATIN

SKATIN

SKATIN

SKATIN

SKATIN

SKATIN

SKATIN

SKATIN

SKATIN

SKATIN

SKATIN

SKATIN

SKATIN

SKATIN

SKATIN

SKATIN

SKATIN

SKATIN

SKATIN

SKATIN

SKATIN

SKATIN

SKATIN

SKATIN

SKATIN

SKATIN

SKATIN

SKATIN

SKATIN

SKATIN

SKATIN

SKATIN

SKATIN

SKATIN



# ..SOCIETY..

## CRYSTAL BALLROOM SCENE OF ZETA-DELTA KAPP SEMI-FORMAL

### Brad Bannon Playing for Elaborate Affair

Initiating the winter social affairs of the campus fraternities will be the annual semi-formal given by members of Sigma Zeta, Epsilon and Delta Kappa Phi. The co-host affair will be held tomorrow evening in the Crystal Ballroom of the Winthrop Hotel to the music of Brad Bannon and his orchestra.

A color theme of blue and silver will be used throughout the decorations and on the programs. Robert Myers and Dick Purlich are co-chairmen for the dance and are assisted by Charles Pratt, Gale Sampson and Melvin Tennent.

Guests for the evening will be the Misses Faye Nelson, Vera McConnell, Lillian Mattson, Jane Hudson, Lillian Loyd, Doris Day, Betty Morris, Peggy Shaw, Beth Arpke, Olga Johnson, Betty Heaton, Dee Maybin, Janice Stenson, Harriet Cline, Patricia Smith, Signe Gustafson, Shirley Haynes, Erna Brenner, Martha McNeill, Nan Standish, and Marion Rol-

stad. Other guests invited for the evening are Stanley Hews and Jack Condon.

Other guests are Vera Healy, Annabel Miller, Jane Sorenson, Marijane Lewis, Pomona Hudson, Judy Anderson, Virginia Judd, Bernice Christensen, Mary Ann Jelusich, Evelyn Decker, Patricia Glover, Grace McLean, Mary Lou Jennings, Dorothy Wickens, Peggy Steele, Helen Folsom, Virginia Fry, Marie Mulligan, Dorothy Royn, Margaret Sines, Margaret Butler, Frances Latson, Beulah Eskildsen, Louise Nordeen, Virginia Smyth, Betty Luckow, Lois Barnhart, Enid Rummel, Greselda Lyons and Kay Woods.

**LAUGHS FOLLOW PLAY INCIDENT**  
"I don't love you—there's someone else," uttered a strange soprano voice. Laughter followed. The oh so feminine voice was none other than David Davies helping out with the casting of the Frosh-Soph play. Those trying out agreed unanimously that David ought to walk off with the leading demimure role!

### JENKINS, MCKINNEY TO RELATE TRAVELS

Experience in Europe last summer will be recounted by Miss Marjorie Jenkins and Miss Helen McKinney at the YW Fireside Sunday, Oct. 22.

Ruth Pauline Todd will entertain the group at her home from three to five o'clock. This is the first of the monthly Firesides to which all girls of the college are welcome. Florence Darrow is making the arrangements, assisted by Ruth Todd.

Miss McKinney will preside at the tea table following the program.

### ELLIS TO DISCLOSE DEMOCRACY IN CRISIS

Mrs. Overton Ellis will discuss Democracy in Crisis at the upper-class-freshman YW meeting Tuesday chapel period. Mrs. Ellis has spoken to the Y on several occasions. The meeting will be held in the YW room.

## Shop Talk

By Rosalie

Elizabeth Bona practically skated on her ear at the ice skating party last Tuesday afternoon. She is really good and made a very pretty picture indeed with her short, red skirt, aqua sweater, red beret and gloves.

Two other highlights of the party were the skating skirts worn by Flossie McLean and Dot Mulligan. Dottie's was maroon corduroy and Flossie's was black velvet. Both were lined with white.

Victoria Hanson is sprouting a new dress that has a very military air. The skirt is black and has pockets inserted in it that are trimmed with shiny silver buttons. They gray blouse has a bright red belt, also trimmed with silver buttons, and is topped with a tiny black bolero.

Slate blue is the color of Nathan Hale's new sweater. The raglan sleeve extends across the shoulder to the neckline. It is knitted with a heavy, wide rib.

People are getting pretty "snooty" these days. They are being worn by Peggy Simpson, Mary Jelusich, Lorraine Alberts and Bobby Nadeau.

Looked like pretty important stuff... The other day we saw Enid Miller and Bill Thorp with their heads together in the library. Wonder what it was?

Really collegiate is the green, black and white plaid dress being worn by Genevieve Hicks these days.

Phil Garland hopes that the Thetas don't make their pledges go with the Zetes. We wonder why.

Among the Clark Gables at CPS: Walt Piper, Bill Taylor, Jimmy Paulson, Walt Piper, Warren Harvey, Bob Maycumber, Walt Piper, Wally Starkey, Bernie Enright, Walt Piper.

A lovely coat is the one belonging to Lorraine Simpson. It is made of silver muskrat fur. The shoulders are boxy and the coat is made on simple, straight lines.

Our candidates for the All-American Co-ed: Janet Hatch, Lil Mattson, Virginia Judd, Frances Latson, Wyona Diemer, Jane Barton, Annabel Miller.

## Kappa Phi Head Meets CPS Chapter

Mrs. H. M. LeSourd, national grand sponsor of Kappa Phi, met with the local chapter last Wednesday evening at the home of Mrs. Harold McClary. Mrs. LeSourd spent both Wednesday and Thursday on our campus.

Miss Mary McKenney, local president, and Miss Ruth McCrae met Mrs. LeSourd at Northfield, Massachusetts, where they attended the national convention of Kappa Phi last June. She is the wife of the dean of Boston University. Mrs. LeSourd was one of the 37 women delegates to the Methodist uniting conference at Kansas City.

Mrs. LeSourd is now on her way to Pasadena, California, where she will attend the national convention of the Women's Home Missionary Society of the Methodist Church. On her way she is visiting all the western Kappa Phi chapters.

## Y. W. Officers and Committees Elected

At the regular Tuesday meeting during chapel period President Doris Sommers of the Freshman Y.W.C.A. announced that her cabinet would consist of the following members: Virginia Mason, social chairman; Jane Lund, program chairman; and Bergitte Hansen, service chairman. Miss McKinney, faculty advisor of the freshman group, was introduced to the girls. The remainder of the meeting was spent in singing, lead by Ruth Switzer, and playing a get-acquainted game, lead by Virginia Lantz.

As the results of a previous meeting the officers elected were: Doris Sommers, president; Virginia Lantz, vice president; Patricia Keene, secretary; and Enid Rummel, treasurer. Joan Roberts is student advisor for the Freshman Y.W.C.A.

## Hockey Teams Out To Beat U. of W.

Hockey teams have been out on Monday, Wednesday of this week with 26 girls making the squads. The teams will be out this noon and Monday, Wednesday and Friday of next week to practice for going over to the University to meet the Husky shin-whackers. Incidentally WAA still has hopes of going over to Pullman, too.

The annual high school play date has been set for the 4th of November. Fifteen high schools have been invited to send three girls and an adviser each. Plans are under way to make this one bigger and better than any before.

## DEMPSEY BOOKS GO TO LIBRARY

The CPS library has just received 240 volumes of general literature from the library of the late James W. Dempsey. Mr. Perry was given his choice from a library of 1,000 volumes, the remainder of which will go to the library of the Western Washington State Hospital.

The books were donated by Mr. Dempsey's daughter, Mrs. W. R. Thayer, who came from Colorado, California to sell the Dempsey home.

For Sale—1928 Buick Coupe \$60. Motor in Good Repair; Rubber Good 1st Class General Condition

WENDELL JONES

W. P. FULLER & CO.  
1117 A St. MA. 3142

## FIRST HIKE GETS LARGE TURNOUT

None the worse for wear, except for a few tired muscles, are the 30 who laid aside all troubles last Saturday and journeyed to Carbon River Park for the first all college hike. Dean Regester was the "life of the party," leading the procession to Spray Park.

If you wish you'd gone now, don't miss the next one. Time and destination will be announced later.

## "LA DAME ROUGE" DANCE A SUCCESS

It seems like the dorm girls are coming in style early this year, judging by the hilarious party given last Friday night. Dancing to the latest popular song hits on the nickelodian made the evening a complete success. During intermission, Miss Kay Sutherland entertained with the singing of "My Man."

Double Thick Milkshake 10c  
SUPER CREAMED ICE CREAM SHOP  
3812 No. 26th

SEE SHERFY'S  
For Halloween Favors, Masks and Novelties  
6th & Proctor 27th & Proctor

Your Appearance Is Important

KEEP YOUR CLOTHES CLEANED AND PRESSED at the

MODERN CLEANERS  
2300-6th Ave. MA. 3292

DAMMEIER PRINTING COMPANY  
AN UNUSUAL NAME!  
AN UNUSUAL SERVICE!

UNUSUALLY FINE PRINTING  
Planned and Produced  
MAin 1065  
930 Commerce St.

Fall Permanents BRIGHTS BEAUTY SALON  
2705 No. Proctor PROCTOR 1148

Costumes, Dress Suits For Rent  
NEAL E. THORSEN  
926 1/2 Brdway. MA. 4861  
Masks, Novelties for Sale

Young Tacoma Shop presents DATE DRESSES for Up-to-Date-Co-eds.  
RHODES BROTHERS - TACOMA

Dick Cummings Receives One FREE Milkshake at Carroll's Ice Creamery  
607 No. Proctor  
Call at Trail Office for Ticket

PLATE LUNCHES SHORT ORDERS

Table and Counter Service at

LOUISE  
3831 Sixth Ave.

HEAR AND SEE IT!  
TOMORROW NIGHT

THE UNITED STATES NAVY BAND

of Washington, D. C.

at THE STATE ARMORY

8:15 P. M.  
Tickets 50c, \$1 - Plus Tax

On Sale at BOOKSTORE

DANCE BIDS - PROGRAMS  
ALLSTRUM PRINTING CO.  
940 Commerce St. MAIn 6768

## MINER ENTERTAINS CPS SPANISH CLUB

Federico Lastra, visiting mining engineer from the Republic of Chili, was honor guest last Thursday at the Spanish Club meeting held in the reception hall. He spoke on the customs, sports, and products of Argentine. He left several books for the students to read if they are interested in Argentine. He gave his talk entirely in Spanish. A large number of students were present, and the date for the next meeting will soon be posted.

## SKI CLUB SKATES AT ICE ARENA

More than 80 skaters cut figures on the ice at the Lake-wood arena in the college ski club party, Tuesday evening, Oct. 17, during two hours of entertainment.

Although it was the first attempt on skates for a number of the winter sports enthusiasts, expert figure skaters displayed the fine points of the Norwegian art. At intermission Betty Lee Bennett and John Kenney, national junior figure skating champions swirled through an exhibition of fancy ice cutting.

College students attracting attention by the novelty of their gyrations were Elizabeth Bona and Phil Murray who performed his own version of a Sonya Heine act.

Skating parties at exceptionally low rates for the large parties sponsored by the ski club are on the calendar for the winter months according to Dr. Warren E. Tomlinson, "dean" of college outdoor frolics.

RIALTO  
NOW PLAYING  
Joe E. Brown  
Martha Raye in  
"\$1,000 A TOUCHDOWN"  
— Plus —  
Walter Connolly in  
"THOSE HIGH GREY WALLS"  
25c 'til 5

LAKWOOD  
Friday, Saturday, Sunday  
"BLONDIE TAKES A VACATION"  
Penny Singleton, Arthur Lake  
— Plus —  
"12 CROWDED HOURS"  
Richard Dix  
GENERAL ADMISSION 25c

TEMPLE Theater  
Friday Evening  
NOV. 3

IN PERSON RADIOS DYNAMIC MAESTRO

RUBINOFF and his VIOLIN  
With FRAY & BRAGGIOTTI  
FAMOUS PIANO DUO  
A Concert Presentation of Modern Music.

TICKETS NOW ON SALE AT FRASER'S  
912 Brdwy.  
Phone BR 1131  
50c, 75c, \$1.00, \$1.50 (Plus Tax)

## TOLO ROYALTY VOTING BEGINS

Well now the time has come for all good girls to dish out their pocketbooks for Tolo is in the air. The important social event is to be held at the Rialto theater on Friday, Nov. 3, 1939.

Tolo Queens elected by the various sororities included Miss Eleanor Weaver, Lambda Sigma Chi; Miss Lillian Mattson, Kappa Sigma Theta; Miss Virginia Judd, Delta Alpha Gamma; and Miss Vera Healy, Alpha Beta Upsilon. Fraternities elected Tolo Kings and they are Bill Johnson, Sigma Mu Chi and Bernard Enright, Delta Pi Omicron. Sigma Zeta Epsilon, Alpha Chi Nu and Delta Kappa Phi fraternities have not elected candidates as yet.

Miss Marie Mulligan is general chairman for Tolo. Working under her are Miss Doris Wittren, publicity; Miss Marion Brush and Miss Jane Sorenson, program; and Miss Elizabeth Bona, tickets.

## NURSERY FEATURE AT BETA PLEDGE DANCE

Nursery Nonsense will be the motif of the Alpha Beta Upsilon pledge dance to be held Nov. 11, at the roof garden of the Masonic Temple.

It will be a costume dance and everyone will come dressed as his favorite story book character.

Arrangements for the affair are being made by Esther Sandstedt, pledge president, and Betty Platt, committee chairman, with Betty Tregonning and Pat Keene assisting her with the decorations and programs.

## Theta Pledges Sneak; Caught at Dash Point

Carrying out the first sneak of the year, the Kappa Sigma Theta pledges were unsuccessful in eluding the members Wednesday evening, being caught at 7:00 at the Dash Point Community House. Dr. and Mrs. Powell chaperoned.

OIL SHAMPOO and FINGER WAVE  
All for 50c  
At Tacoma's Largest Beauty Establishment  
THE MODERN BEAUTY ACADEMY  
"Across from Sears Roebuck"

ROXY  
Now He's the Bad Man of the Battle Fleet.  
Wallace Berry in "THUNDER AFLOAT"  
With Chester Morris, Virginia Grey, Plus Bert Wheeler in "The Cowboy Quarterback"

MUSIC BOX  
Ever her Brilliant Triumphs of the Past pale beside this Glorious New Characterization.  
Bette Davis, Mariam Hopkins in "THE OLD MAID"  
With George Brent - Extra - March of Time presents "BATTLE FLEETS OF ENGLAND"

BLUE MOUSE  
Priscilla Lane, John Garfield in "DAUGHTERS COURAGEOUS"  
— Plus —  
Randolph Scott in "FRONTIER MARSHAL"  
NEW PRICES  
15c 'til 5; 25c Nites

TEMPLE  
3 Days Starting Sun. Gary Cooper in "The Cowboy and the Lady"  
— Plus —  
Constance Bennett in "SERVICE DELUXE"  
10c 'til 5; 15c Nites

made to secure... men as leaders in the various... divisions.

Students should bring standard examination books to use in writing examinations. Books, notebooks, or papers other than ones turned

to general public. Local sponsors are the Tacoma Flying Service, the College of

ter, several new books will be coming into the store for student convenience. Books used in first



# LOGGERS AND WHITWORTH IN TIE

## LOGGER LINE HOLDS FOES, 0-0, BUT WHITWORTH OFFENSE RULES

Pulling a surprise passing attack out of their bag of tricks, a small, highly under-rated but clever Whitworth eleven swamped its favored opponents last night when it ran all over the Loggers offensively. The final score was 0-0.

Playing under the lights to a crowd of approximately 2,000, the CPS grid squad showed superior power and speed in the first quarter but once the Whitworth eleven got hold of the ball in the remaining three periods of the game, the Loggers knew what they were up against. The enemy threatened three times on the Logger three or five yard line and only the superior line strength of the Tacoma aggregation saved them from an upset.

Starring for the local boys were Bill Tucker, whose runing, pass catching and real fighting pulled the Loggers out of the hole more than once, Bob Maycomber and his marvelous line-backing, and Bert McLaughlin's kicking.

Injuries clearly hampered the Maroon and White clad pigskin toters in their efforts last night but to make up for the lack of interference and offensive technique, the Loggers, to the tune of "hold that line," resolved themselves into a brick wall when their foes threatened seriously on the three yard line in the final minutes of play. They also opened up on even offense in those climatic moments, pulling a passing barrage out of their hats that could have been used advantageously earlier in the game.

The lineup was as follows:

CPS	Whitworth
Hutchinson	LE Johnson
Bucsko	LT Towers
Piper	LG Wold
Neeley	C Stannard
Lowe	RG Sauer
Trombley	RT Soehren
Maycumber	RE Olson
Ramsey	QB Fisher
Madden	LH Tanneberg
Tucker	RH Randolph
Martin	FB Ralston

### PACIFIC NORTHWEST CONFERENCE STANDINGS

	W.	L.	Pf.	Pa.	Pct.
Pacific	2	0	19	0	1.000
Willamette	1	0	29	6	1.000
C. P. S.	1	1	20	20	.500
C. of I.	0	0	0	0	.000
Whitman	0	1	7	20	.000
Linfield	0	2	6	35	.000

### Last Week's Results

Pacific 13, CPS 0; Willamette 29, Linfield 6; Idaho 26, EON 6.

Following last week's conquest of the College of Puget Sound Loggers, the Pacific University Badgers will attempt to make it three straight in conference play when they tackle the Whitman College Missionaries at Walla Walla this evening.

## "Things To Come"

### BASEBALL

If a turnout of 40 to the baseball meeting called by Bob Hutchinson Monday and the signing of their petition by half the student body means anything, and it apparently does, baseball is on its way back.

The petition is to be sent to central board and the request is for baseball to be replaced in the college curriculum as an active sport.

Plans are even being probed to obtain the athletic park for use in college baseball games and it seems that approval is in the offing. CPS is certainly not lacking in baseball talent and a team at the college would not be a loser!

### BASKETBALL

Paulson, Cross, Granlund, Starkey, Ester, Werbisky, Walker, West, Lucich, Mitchell, and Van Camp were but a few of the basketball enthusiasts who were out to limber their legs and sharpen their shooting eyes at the first two turnouts of the

"39-40" season. The practice periods were largely taken up with running through the offensive formations and other fundamental features. Turnouts for the next two or three weeks will be on Monday and Thursday nights and Coach Lou Grant wants everyone interested to be out on these nights. Consensus of opinion points to a successful season starting in the latter part of November or early December.

**STUDENTS—BE CAREFUL OF PRICELESS VISION**  
See  
**DR. G. R. RIDGEWAY**  
Corner 9th and Commerce  
Winthrop Hotel BR. 2460

**JUMBO MILKSHAKES**  
— The Best Anywhere —  
at the  
Proctor Ice Creamery  
3813 No. 26th

**CRAIG FURNITURE CO.**  
1136 Brdwy. BR. 3226

Furniture, Rugs, Refrigerators, Spark Heaters, H. C. Little Floor Furnaces  
TERMS TO SUIT YOUR CONVENIENCE  
DAVE PALMER

## WINTER SPORTS

ICE SKATING - - - SKIING  
"Hyde" - "Spalding" C.C.M. in Skates  
A & T Skis and Hirsch-Weis Clothing  
SKATES SHARPENED - - - SKIS TO RENT

**Washington Hardware Co.**

924 Pacific Avenue

## C.P.S. Sports

Editor — Bill Melton

### Timber Lines

By Bill Melton



There's something to be thankful for on the dear old CPS campus and that's the fact that the lads and lassies have not given up hope of CPS's chances for a good standing in the conference grid calendar. Just because a strong Pacific team beat us last week there is no lack of school spirit, all of which is very encouraging to team, coach, and everyone concerned. It is gratifying just to learn from Coach Frank that the team looked better in defeat than in victory over Whitman last week. The team, he said, was a greatly improved one, so what more can we ask. Sounds good to me!

Was glad to know that our cheering section is alive. Had my doubts 'till Thursday. Though a bit rusty, Jarvis, Baker and Enright did OK in rousing a cheer or two in yesterday's pep rally. The beef is that you hear of our cheer leaders for about two weeks out of every year and then they disappear. Let's hope that two home games won't be the extent of their activity this year. Let's see them out there cheering for basketball, tennis, baseball, track—anything! What are those sweaters and those hoarse throats for but to signify that they are our pep leaders?

Where did the intramural football play-off system come from? I thought they buried those things with Caesar! Even the intramural big-wigs admit it could be better. The best thing that you can say for the system is that it is certainly novel! But seriously, and to quote many observers, it certainly is unfair! The Japanese boys really had it all over the

Witans in the last part of last Tuesday's game and because they didn't happen to have the ball on the right side of the dividing line in the right part of the overtime they lose by one point! Before the gun sounded the Nippons were marching down the enemy's territory with the speed of a sprint man. Should they lose and be cast out of the race? No!

It has been suggested by many worthy gridiron fans that I put a "plug" in this column for a caravan to take the trip with the team down to McMinnville for the Linfield game — the season's closer. A fine idea. We don't have much chance to see our team in action this year; so why not pay 50c or so for a ride and see them give the Linfield boys a run for their money?

### 'Mural Football Nears Climax As Zetes Lead Race

The second week of the 'mural football season found the favored teams advancing and the first double losers dropped. In the first canto on Tuesday Sigma Zeta Upsilon marched unhampered to its second walk-away victory. This time by the tune of 25-0 over the Delta Kappas. Halfway through the first half Werbisky tossed a pass to "Bud" Nash to open the scoring. The point was missed and the half ended 6-0. The second half gave three more tallies and one point to swell the total to 25. Werbisky ran the first over from the five yard line, then passed to Kaplin for the point. Werbisky to Walker and Cross to Piper counted for the final scores.

The second contest was a tight battle between the Witans and the Nippons. The score at the end of the regular playing time was tied and the Witans won out in the overtime, 1 to 0.

The ping pong and handball tournaments went forward with the following matches being played. In ping pong the first round results are: Schorer over Hill, Hanawalt over Cross, Ester over Myers, Bertholet over Henderson, Heaton over Granlund, Schorer over Walters, Walker over Gertmann, Hoshide over Hoppen, Nelson over Barrett, Duncan over Aherns, Werbisky over Richardson, Hanson over

## LOGGERS DUMPED BY STRONG PACIFIC GRID TEAM 13-0

Pacific University continued its winning ways in conference play by defeating College of Puget Sound 13 to 0, in a game played at the Badger field in Forest Grove last Friday night.

The Loggers looked better in defeat at Forest Grove than they did in winning from the Missionaries at Walla Walla the previous week, according to Coach Leo Frank.

All scoring was done in the last period of the game, the first touchdown coming as the result of a sustained drive from the Pacific 40. Gilman went off tackle from the two yard line, and on the attempt for conversion the kick was wide.

On the returning kick-off Bill Madden returned the ball to the Pacific 38 yard line. From there, end runs and reverses carried the ball to the Black and Red 8 yard stripe, where a Logger back fumbled.

An exchange of several punts

gave the Maroon and White the ball on the CPS 20. But an alert Badger back intercepted a short pass, carrying the ball to the two yard line. Three line plays were held for no gain, and on the third down Pacific and CPS called time out simultaneously. This was the Badger fourth time out, and should have resulted in a five yard penalty, but officials and players disagreed when at the same time the gun, ending the game, went off.

A play allotted to Pacific, gave them their second touchdown, the Badger fullback, Horner, going over. The try for point by Gilman was good, and the game ended with the Badgers out in front by 13 points.

While breaks were the deciding points in the game, the CPS defense as well as the offense, functioned much better than during previous games.

initial appearance in net play on Thursday after the paper had gone to press.

Teams playing for the groups are: Lambdas, Barbara Wilson, Ruth Jensen, Gwen Roach and Marian Rolstad; Gammias, Maurteen Martin, Jean Callow and Maryanne Jelusch; Thetas, Marian Wilkinson, Mary King, Frances Cole, Connie Coleman, and Doris Lister; Betas, Peg Gleiser, Mary Ogden, Helen Hite, Vera Healy and Barbara Healy; Independents, Margarita Irlie, Helen Berg, Helen Wiltschko.

## COACH'S CORNER

By Coach Frank

In our game with Pacific University last Friday night the team showed marked improvement over the three previous games.



Our defense which had not functioned any too well in the past was much better and the team as a whole played a very fine game. Madden in the backfield and Underwood on the line deserved praise for their fine work. Gillman was the big gun for Pacific and is a real halfback.

From all indications Pacific and Willamette will fight it out for the conference championship on Armistice Day with the odds favoring Willamette. Willamette demonstrated its power last Saturday by downing a strong Linfield team 29-6. If we can get safely over Whitworth College this week we may pull an upset on Willamette but the chances are ten to one against us.

The team is not physically fit to enter the Whitworth game. Underwood is out with a broken hand and it is doubtful if Madden and McLaughlin will see action. Martin is still troubled with an injured wrist and Bucsko, Williams and Zile have a touch of the flu. But we'll be out there fighting all the way!

## W.A.A.

### SHORT SHOTS

By Vera Healy

Back and forth over the net goes the little white ball and the intersoritory ping pong tournament is under way on Tuesday and Thursday noons in the girls' gym. The first matches were played off on Tuesday of this week with the Gammias forfeiting their match to the superior showing independent players and the Thetas defaulting to the Lambdas. The Betas made their

### FREE

Use of an Electric Polisher for one day with a Two Pound Can of Fuller's Floor Wax at the regular price of 95c

**JONAS HARDWARE**  
2503-6th Ave. MA. 7441  
"Opposite Sunset Theater"

LET'S EAT at  
**BONNIE'S CAFE**

Full Course Meals  
Short Orders

Open 6 a. m. to 2 a. m.  
2507 Sixth Ave.

## SKATE YOUR DATE

Enjoy the thrill of skating on ice that is always Smooth and Hard

## IMPORTANT ANNOUNCEMENT

Of vital interest to all CPS Faculty, Students and Freshmen is the announcement by the manager of The Lakewood Ice Arena that student-teacher skating party rates have been reduced this season. For information and reservations call John Johnsen at LA. 2144.

### SKATING SESSIONS AS FOLLOWS:

WEEK DAYS  
10 to 12:15 a. m.; 3 to 5 p. m.; 7:45 to 10 p. m.  
SATURDAYS—Same as week days except an extra noon session from 12:30 to 2:30 p. m.  
SUNDAYS  
12 to 2 p. m.; 2:30 to 4:30 p. m.; 7:45 to 10 p. m.

**Lakewood Ice Arena**

Manager, John Johnsen LA. 2144

## ASK THE MAN WHO'S EATEN ONE

They all agree that our Banana Splits are the Biggest and Most Delicious they've ever had.

DID YOU GET YOURS

Bring in Your Friend next Tuesday and Wednesday Only For this Special HOT FUDGE SUNDAES (regular price 15c) ONLY 10c

FOR SPECIAL ORDERS SEE US

**ARCTIC ICE CREAMERY**  
2307 Sixth Avenue

When All the Shouting Is Over

You'll Find Warm, Comfortable Booths at

**BURPEE'S**

6th Ave. & Pine

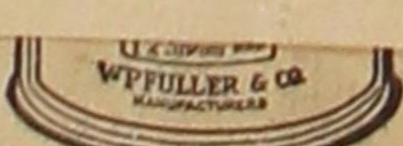
## WINTER SPORTS

ICE SKATING - - - SKIING  
"Hyde" - "Spalding" C.C.M. in Skates  
A & T Skis and Hirsch-Weis Clothing  
SKATES SHARPENED - - - SKIS TO RENT

**Washington Hardware Co.**

924 Pacific Avenue

Sixth Ave. and So. Pine  
MAIN 5071  
FRANK LARSON



**HARDWARE CO.**

Proofs Submitted!

First Floor