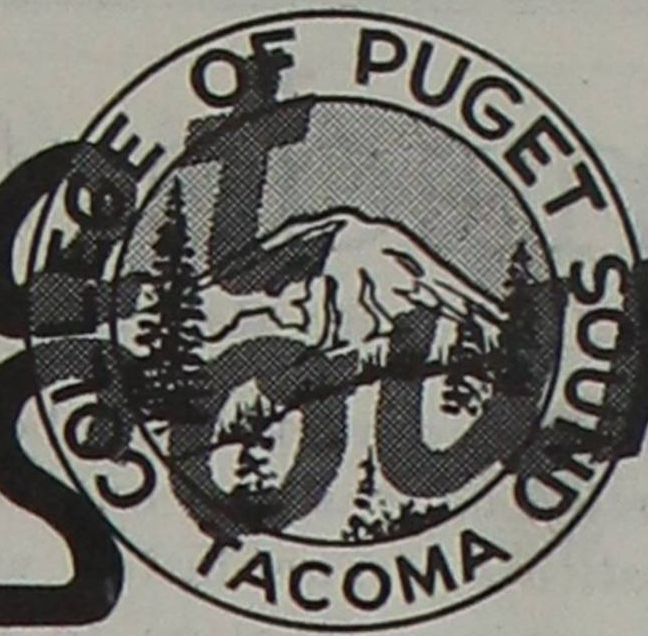


# THE *Puget Sound* TRAIL



VOL 16, NO. 8

THE COLLEGE OF PUGET SOUND, TACOMA, WASHINGTON

DECEMBER 3, 1937

## DRAMATISTS TO GIVE XMAS PLAY 'DUST OF ROAD'

Marguerite Barry and Duane Lamka in Traditional Program

"Dust of the Road," a serious one-act drama by Kenneth Sawyer Goodman, will be presented by Campus Playcrafters in chapel, Friday, December 17, as the annual Christmas play. This production is under the direction of Martha Pearl Jones, head of the dramatic department.

The story of the play concerns a sum of money left with Peter Steele by a man who was killed shortly afterwards in the World War. There is no account of the money, which was to be turned over to the dead man's son upon his twenty-first birthday. How Peter and his wife Prudence are persuaded to deliver the money to its rightful owner by the efforts of a strange wandering tramp forms the basis of the plot.

The cast as selected as a result of the tryouts on Monday, November 22, is as follows:

The Tramp.....Dewane Lamka  
Peter Steele.....Richard Sloat  
Prudence Steele.....Marguerite Barry  
Old Man.....Gordon Tuell  
Production staff includes Wesla Jane Whealdon, Edith Allen, Phyllis Anderson, Dorothy Padfield, and Ruth Reisner. As in previous years the public is invited to the performance of the Christmas play.

## SYMPHONY DEC. 11

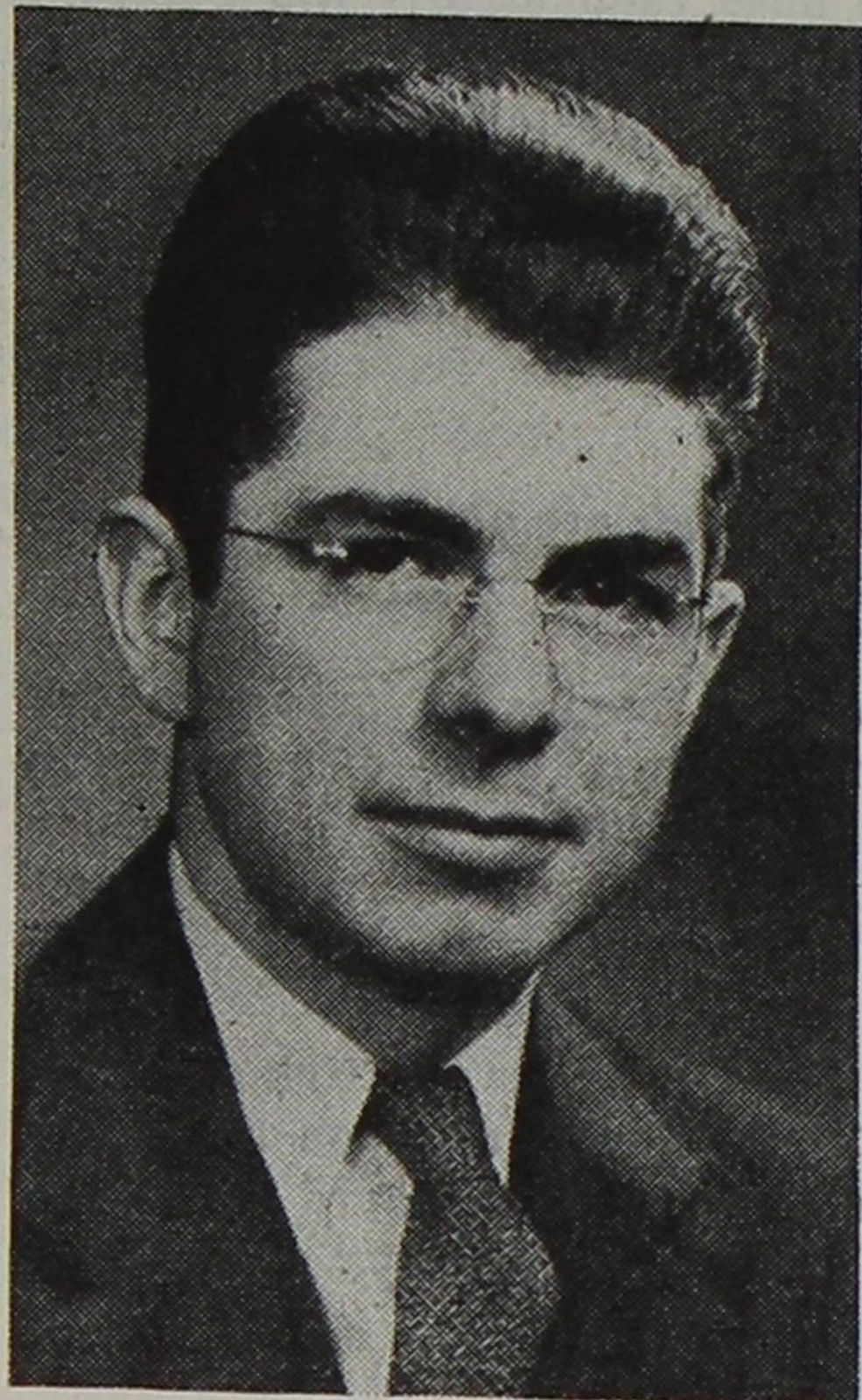
The Kryle Symphony orchestra featuring Mary McCormic, Chicago opera star, and the leader, a world-renowned cornetist, will present two concerts on Saturday, December 11, at Jason Lee intermediate school. Kryle once performed with a circus and later was a 'cornet soloist with Sousa's band. He is an excellent showman and can play two full octaves below the normal range of his instrument.

There will be a matinee for students in the afternoon and another performance at 8:15 in the evening. The special admission price for college students is 55 cents including tax. A bloc of reserved tickets will be on sale in the Book Store next week.

Adult tickets range from \$1.05 to \$1.60 including tax. They may be purchased on the seventh floor of Fisher's or by calling Broadway 4242.

## State Patrol Misses Forest Grove Caravan

"No caravan . . . no state patrol . . . no pep rallies, but we did have a good time," was the opinion expressed by Forest Grove tripsters, when asked of the intended football parade to Pacific University Saturday, Nov. 20. Inclement weather broke up the caravan plans, so that the cars had to travel separately; the state patrol arrived at the college three and one-half hours too late for the caravan starting-time; and because the cars traveled separately pep rally proceedings at Kelso, Olympia, and Chehalis were called off.



## PROF. D. R. SMITH TO GIVE RECITAL

Professor D. Robert Smith will present an organ recital in Jones Hall Auditorium on Sunday, December 5, at 4 p. m. The program is as follows:

Toccata in B Minor.....Eugene Gigout  
Chorale-Preludes.....J. S. Bach  
Come, Christian Folk  
Hark! A Voice Saith, All Are Mortal  
Adagio e Vivace,  
Trio Sonata IV.....J. S. Bach  
Corrente e Siciliano  
.....Sigfrid Karg-Elert  
Canon in B Minor  
.....Robert Schumann  
Sinfonietta in B Flat (ms.)  
.....D. Robert Smith

Symphony V.....Charles M. Widor  
Sinfonietta in B flat was written by Professor Smith as a thesis for a master of music degree which he received from Depauw University last June. Two years were required to complete the composition and during that time it changed so much that its connection with the original form could hardly be recognized.

The title, "Sinfonietta," is derived from an Italian word meaning "symphony." The composition was originally written for orchestra but a special organ arrangement has been made for Sunday's recital.

## FOUR FROM CPS ATTEND CONCLAVE

As representatives from CPS, George Fisher, juniors, Robert Bjorklund and Kenneth Clark, sophomores, and Olaf Emblem, freshman, drove to the Lutheran Students Association of America convention, held at WSC November 26, 27, and 28. The group left Tacoma Friday morning with the PLC caravan and reached Pullman in time for the banquet that evening. At this banquet the students from each college sang their Alma Mater. Fourteen colleges from Washington, Oregon, and Idaho were represented. Saturday there were several meetings and another banquet on the theme, "Youth in Action," with Reverend Paul Bierstedt of Cleveland, Ohio, as the main speaker.

They toured both the WSC and Idaho University campuses. The men stayed at the Alpha Gamma Rho fraternity house.

The delegates returned to Tacoma Sunday evening and declared that the convention was well worth the long trip.

## Freshman Entertainment Tops Thursday Chapels

Climaxing the student chapels presented thus far, the Freshman Class provided a mild sensation at Thursday chapel yesterday. With Maestro Leo Magrini as master of ceremonies in the make-believe cabaret, outstanding numbers on the program were Ward Allen's song, the dance by Doris Christian and Betty Olson, Annabel Miller's reading and the Big Apple swung by Wally Starkey, Juness Jewell, Bud Barrett, Marjorie Wickens.

Next week's student chapel will be under the direction of the Lettermen's Club.

## Debaters Will Meet Gonzaga

### Extempore Contest Will Be Dec. 14

Two debate teams from Gonzaga University will meet two Puget Sound teams. Professor Battin has announced. Those chosen to participate are Charles Gleiser and Charles Shireman, affirmative; Bob Byrd and James Docherty, negative.

The annual extempore contest will be held December 14. The drawing will be at 1 p. m., with each contestant drawing three topics from which he will choose one. Preparation time is one hour with a minimum speaking time of five minutes and a maximum of eight. No notes will be permitted. As has been announced, the topics will be chosen from the two issues of Time and Literary Digest immediately preceding the contest.

Notices are being sent out by Bob Byrd, men's debate manager, for the annual junior college debate tournament to be held here March 4 and 5. Extempore, oratory and traditional debating will be held at this time.

Women debaters have been ranked as follows: Catherine McConron, Sarah Louise Doub, Marie Gilstrap, Elizabeth Hardison, Marie Gilstrap, Barbara Healy, Edith Mae Hammond, Elsie Wheaton, Helen Gates, Irma Jueling, Margaret Gleiser, and Wilma Ittner. Ranking was on the basis of tournament competition.

Men have been ranked on the same basis. Wilbur Baisinger was first with the rest as follows: Bob Byrd, Charles Shireman, Charles Gleiser, James Docherty, Lyle Jamison, George Forsythe, Stanley Nash, Don Roberts, Tom Ray, Yoshiteru Kawano and Paul Seto. The next men's tournament will be December 9 and the next women's Tuesday evening.

Elizabeth Hardison has announced February 12, 13, as the dates for the annual high school tournament. About 20 schools are expected to participate.

## METHODISTS WILL MEET IN ST. LOUIS

The first national Methodist Student Conference will be held during Christmas vacation, December 28-31, in St. Louis, Missouri. CPS Methodist students will meet soon to form plans for sending a delegate.

## CONSTITUTIONAL AMENDMENTS TO BE PRESENTED FOR VOTE

### Central Board Proposes That Student Managers Be Made Ex-Officio Members

At the regular meeting of Central Board on Monday, November 22, first steps were taken to put the recommendations of the finance commission into effect. The following proposals received the sanction of the Board as constitutional changes and will be presented to the Student Body for ratification:

### Annual First; Margaret Sines, Editorial Wins

At the Alpha Phi Gamma and Beta Phi Gamma convention held last week-end in San Francisco, the College of Puget Sound showed its supremacy over several larger colleges and universities by taking the highest award in the year-book division of competition. The judges were National Officers of the Fraternity and placed emphasis on the quality and originality of the photography of the Tamanawas.

In individual sports, editorials and general news stories submitted from issues of the various school papers, an editorial written by Miss Margaret Sines entitled "Women and War" won first prize in its division. Certificates giving national recognition in both divisions will soon be sent to the College from the offices of Alpha Phi Gamma.

Traveling the longest distance, Miss Marcia Woods and Miss Wilma Ittner, delegates from CPS, posed for a picture with the convention chairman. All other delegates were from California.

Registration of the eighty delegates at the convention showed representation from fifteen colleges on the Pacific Coast.

First, that the managers of men's intramural athletics, women's athletics, dramatics, forensics, and music; the editors of the Trail and the Tamanawas; and a student representing varsity or intercollegiate athletics be ex-officio members of Central Board; second, that a department be allowed to retain its unexpended balance from year to year.

Other proposals approved by the board which will take the form of by-laws were the following: that the monthly reports of the treasurer be presented in Central Board and be posted with the minutes of Central Board on the bulletin board; that the auditor's report be given to Central Board each year; that a copy of the budget of the A.S.C.P.S. be posted on the bulletin board where it will be accessible to the students at all times; and that the amount in the surplus fund at present be retained as a revolving fund to be used only to settle debts if there is a deficit and then only in the form of loans which are to be repaid.

As an expression of sentiment, the Board recommended that the round robin of competition in football be discontinued. The final and much-discussed part of the commission's report, dealing with reapportionment of the budget on a percentage basis, will be the subject of discussion at the next regular meeting of the Board on Monday, December 6.

## "High School to College" Progression Seen in Careers of Professors Here

By Margaret Wilson

Every one has a past, even college professors, so after serious and prolonged study, we are happy to be able to tear off the curtain shading the past of the Puget Sound faculty.

Most of the faculty at one time or another have been high school principals, or instructors, in high schools: Mrs. Drushel, dean of women, varied her work as an instructor of English at Lincoln High with war work under the auspices of the YWCA. Running true to form, Registrar Miller was principal of a high school in Mill Creek, Indiana. But he wandered off the beaten track and at one time in his career was statistician for the Greyhound bus lines.

Professor Bennett, before he graced the music conservatory of Puget Sound, was high school principal at Raymond, Nebraska, and later choir master of the University Episcopal church, Lincoln, Nebraska.

Professor Davis, too, was a high school principal. Dublin, Indiana, was where he wielded the rod. He also had his fling at politics, being state senator from 1913 to 1929. Many are unaware that Mrs. Cheney, now in the registrars' office, was once dean of women here.

Professor McMillin managed to escape the high school period. He was a chemistry instructor at the University and later head of the chemistry and geology department of the Idaho Technical Institute.

Mr. Robbins' career took him to South America where he was an instructor in English College, Iquique, Chile. Later he was in the diplomatic service, United States Legation at Copenhagen.

Perhaps Mr. Perry's genius for ferreting out talkative students is due to his years of library experience. He was librarian at the University of Illinois and then in the Seattle public library.

Dr. Sinclair reverted back to the trodden path of high school principals holding this position at Williams, Iowa. Later he was instructor of psychology and education at Coe College and professor of the same at Huron College.

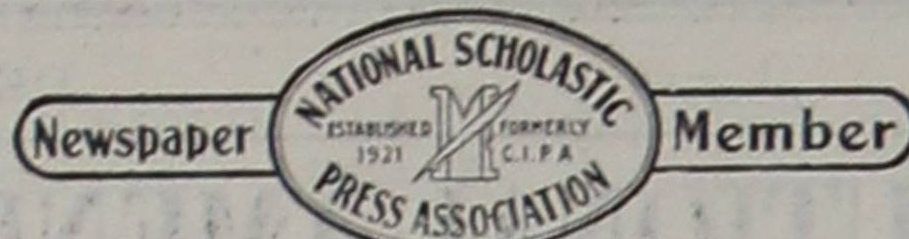
But Dr. Weir gets the prize for the most varied curriculum. He was professor of Latin and Greek at Southwestern College; instructor of mathematics at Northwestern; and professor of the history of education, at Simpson College. The last step in his career before coming to CPS was acting president of Iowa Wesleyan College.



# The Puget Sound Trail

Established September 25, 1922  
Published Weekly During the School Year  
Official Publication of The Associated Students of The  
COLLEGE OF PUGET SOUND

Entered as second-class matter at the Post Office at Tacoma, Washington, under the Act of Congress of March 3, 1879.  
Subscription price, 75c per semester; \$1.00 per school year by mail.



PRINTED BY THE DAMMEIER PRINTING COMPANY

## EDITORIAL STAFF

Editor-in-chief.....Ruth Leo Sports.....Herbert Hite  
Associate Editor.....Analie Duncan Society.....Marcia Woods  
Copy Editor.....Paul Lantz Features.....Wilma Ittner  
Reporters—Edith Hammond, Akira Hayashi, Tenny Keil, Roy Lokken,  
Bob Myers, Arthur Peterson, Eleanor Robison, Mark Porter, Margaret  
Wilson.

## BUSINESS STAFF

Manager.....Herbert Clarke Advertising.....Dick Haley  
Assistant Manager.....Paul Juelling Assistants.....  
Circulation Manager.....Jack Perry Betty and Letty Schaufelberger

Faculty Adviser.....A. Douglas Rugh

## WANTED: A CRITICAL ATTITUDE

A critical attitude, we think, is one of the dire needs of any student body. It has oftentimes been mentioned that "school spirit" in this institution is a dead or dying, virtue, but the fault lies not so much with a dying "school spirit" as with an unvoiced intelligence. Whatever economic depression may be going on in the world outside, the student body of CPS certainly seems to be undergoing a sad intellectual depression. This is not to say that it is unique of CPS students but, it is said, the same conditions are thriving in many other colleges throughout the nation. It is a problem unique of Youth Education. Proof of this situation is that many college youths have failed to satisfactorily express themselves. If they have anything intelligent to say, they certainly have not shown it. There are, of course, notable exceptions to this rule.

An intelligent, critical attitude could be had were students to forego their high school mentality and become conscious of the fact that they are college men and women, that they are in college because they are of superior mental quality, and that they can show their intellectual worth by examining their surroundings, their fellows, and the opinions of others critically and expressing their own opinions intelligently.

—ROY N. LOKKEN.

## STUDENT CHAPEL

Student chapel, once an event anticipated by the whole student body, has apparently degenerated into a slipshod affair to which few pay attention. There are several explanations for this condition: lack of advertising, irregularity, inadequate display of talent, etc.

It would seem that since some willing souls consent to spend time and effort on these programs the rest of the student body could turn out en masse in appreciation if nothing else.

Some comment has been made concerning disorderly conduct. This is an excellent topic for at least 200 more words, but in an institution of higher learning attended by "men and women" (that's what they tell the freshmen!) it shouldn't be necessary to delve further into the subject. 'Nuff said.

Wednesdays chapels are to build us up (we guess)—not to Thursday's awful let-down, either. Let's get behind the student chapel programs and help make them hit the top in entertainment value.

—E. R.

## BLAME IT ON THE BUDGET

There has been some criticism of the irregularity with which the Trail appears. We wish to correct this idea by saying that the Trail has missed only two issues including the one last week, and that the first paper was published earlier than the first regular paper has been issued for the last five years. With the budget which is at present allowed the Trail, it is possible to publish only twenty-six issues a year, making it necessary to skip an issue once in a while. We try to make this "once in a while" fall on holidays so that it will not be so noticeable. It is obvious that this is impossible because we do not have enough holidays in the school year to cover the difference between the twenty-six weeks when we have papers and the forty weeks when we have school. We must have more holidays or more papers. We ask that hereafter you register all complaints with the President of the United States or the CPS Finance Committee.

—RUTH LEO.

## BACKSTAGE

By JIMMY DOCHERTY

Various workshop plays are under production or contemplation with the assistance of students in advanced speech classes. "The Pot Boiler," the freshman play, has as assistant directors Dick Sloat and June Peele. "The Lady of the Portrait" will be presented for the mothers' tea, annually sponsored by Otlah, with Gordon Tuell and Marguerite Barry in the leads. Virginia Leonard and Dewane Lamka are co-directors with Beverly Peters and Mary Ann Hawthorne as aids. "The Game of Chess," which is re-

called as one of the memorable recital plays presented several years ago, is under contemplation for general production. Edna St. Vincent Millay's "The Princess Marries the Page," "The Wedding" and "Jerry Joins In" are the others.

Campus Playcrafters will visit Rainier CCC camp for the third time with "Dust of the Road." Other productions which have appeared at Rainier are "Rich Man, Poor Man," and "First Dress Suit," which concluded a two-year run there.

# Inside of the Outside

By Helmut Juelling and Dick Purlich

Flop-o-the-week—Lambda Sigma Chi pledge sneak. We hear that Beth Lee was run out on by Bob Gibson. Bob Bjorklund acted as substitute. The latter was surprised when he found out that he was paying attention to Betty instead of Beth.

Dick Sloat wants to know why Dixie Thompson and Frances Tarr travelled to Forest Grove to meet their escorts when there are so many good looking ZETES at C.P.S.

Sir Malcolm Campbell hasn't a chance when Barney Oldfield McNary drives his aunt's car 95 miles per hour. If the cops don't get him, the undertaker will . . .

## SCOOP! SCOOP!

Romeo Leo Yuckert and Virginia Krogh are already talking over LOVE, life and the pursuit of happiness.

Bob Ingersoll and Jerry Geehan are having an argument over the meaning of promiscuous osculation, much to the dismay of Professor Allsbury. Ingersoll says it is something which by its meaning must be related to the mouth, but Geehan insists that it is something to eat.

Docherty, James Docherty of Yelm fame, is fortifying himself with knowledge for events he expects to take place when he reaches his majority . . . he is questioning experts with regard to the art of "gravelling, fussing, necking, petting, smooching, lolygaging, wirgling, and pitching woo."

Doris Hines after many fruitless attempts, has finally hung a BETA sorority pin on Louis Mosolf. The Beta's think this is quite an accomplishment because "Many have tried but few succeeded" . . . "Deacon Underhill," Book I, Chapter V, verse 8.

Bouncing ball Irvin Robbins is doing his utmost to procure an "A" from Professor Shaffer. It is rumored that Professor Shaffer has been on a diet of Olympic Ice Cream through the courtesy of Irvie and the Robbins' Ice Cream courtesy cards. Tut, tut, Dr. Shaffer, we know you're not losing weight.

Frank Kellog, the stamp collector, has added to his trophies the heart of Patty Pierce. Frank, we frankly admit that we were of the opinion that you didn't have it in you. . .

Ten best looking girls at C.P.S.: Bev Marshall, Deborah Webb, Jane Anderson, Dorothy Shaw, Maurita Shank, Betty Olson, Jane Marchesini, Gretchen Kunigk, Idabelle Arnold, Marguerite Barry. This list was compiled by Kappa Sigma Theta members, pledges, alumnae, Lover Dover Bob Anderson and dreamy-eyed Hal Nelson, at their last regular meeting.—(Paid advertisement.)

Ten best looking boys at C.P.S.: Garth Dickens, Garth Dickens, Garth Dickens, Garth Dickens, Garth Dickens, Garth Dickens, Garth Dickens, and GARTH DICKENS. This list was compiled by Professor Shelmadine, president of SHELMADINE, SHELMADINE, SHELMADINE, AND DICKENS, Inc. Where did Dickens cut in?

Two months in Sociology 21 taught Bud Klemme that he was in an advanced class instead of Soc 13. "This explains why it is so hard," he commented naively.

Thanks to the efforts of the Schaufelberger twins we have a TRAIL each week. This includes Dick Haley who worries till he hurries home when day is through about the Trail Advertising.

Rub-a-Dub-Dub, three men in a tub—My, how unsanitary.

## Our Christmas Shopping List:

For Dr. Todd—\$1,000,000.00 for a fraternity social hall.

For Dr. Battin—A new set of Econ 11 notes.

For the Lambdas—Especially for the four busy bodies—a new loud speaker. They won't have to tell school dirt to each member of the Student Body. Don't ask who the busy bodies are—if the shoe fits, put it on.

For the Thetas—New sox . . . appeal.

For the Gammas—A stocking full of Richie Rowes.

For the Betas—A rug that doesn't smell.

For Miss Jones—More people like Bobby Byrd to throw out of the window.

For Bob Gibson—A sense of humor.

For John Clarke—A new planer.

For Dr. John Paul Bennett—A new Choral Society . . . Truthfully the present lot is . . .

For Myrtle Jenkins—A boy friend that will write to her more than once every two months.

For Professor Rugh—A TRAIL without a dirt column.

For all of you—A wealth of A's in the new year, a new PACK-ARD for every member of the Student body, and a swing band to entertain us during class intermissions.

For Ralph Beach, Dill Van Eaton and Elmer Alskog—A new set of dice.

Once upon a time last Friday night there was a yacht party on the Gallant Lady. Among the guests were Clark Gould and Bobby Longstreth . . . or were they? "Business is sure tightening up," reports the C.P.S. Economist.

Now all of you who are so easily offended listen to this: We know you love it, and putting on an act is just another method of showing your approval of seeing your name in print.

Throw out the light and turn off the cat . . . and so to bed.

# OPEN FOR 'EM

The OPEN FOR 'EM box will be placed in the hallway outside the library. Do not take the color as an indication of our political leanings; instead, it is meant to look like a fire box. So when you get an idea which is too hot to handle, remember we are OPEN FOR 'EM.

YE EDITOR.

As I see it, our school will have a smaller enrollment if we neglect athletics. The best colleges are widely known not only for their scholastic standing but also for their athletic teams. As most colleges have equally high scholastic standards, prospective students prefer the one with the best football team. I do not desire to lower our scholastic standing but we can't expect any worthwhile support from the community, any increase of enrollment, or an expansion of the college without athletic teams.

Why doesn't the administration help us to obtain competition for C.P.S. teams? With better competition we would become better known and our school spirit would be strengthened.

ALLAN ROE.

Eighteen more persons have visited the Galleries on the fourth floor of Jones Hall since October than visited through the whole season last year. A very small percentage of that attendance has been students. Perhaps more attention has been given to outsiders and not enough to the students in the College. It is with these points in mind that the Tacoma Art Association extends an invitation to every student in the College to visit the Galleries.

You may dislike some of the abstractions and you may enjoy others. It is the desire of the association to present as much variety as possible in the exhibitions. The College Galleries is the only place in the state, besides Seattle, where such extensive and continuous exhibitions are given. Feel welcome to visit the Galleries any afternoon except Monday, Monday evening or Sunday afternoons. There might be something to interest you.

MELVIN O. KOHLER.

## Xmas Basket Drive Started

To bring relief to needy families at Christmas time, the Freshmen Commission of the Y.W.C.A. has appointed the following girls to help handle the baskets: Mildred Aylsworth, Betty Jones, Helen Lloyd, Lillian Mattson, Marie Mulligan, Yoshiye Omori, Giselda Petri. Yae Takashima is general chairman for the Christmas work, with Eleanor Robison and Margaret Wilson in charge of publicity.

Representing the various campus organizations in the drive are Signa Byrd, Lambda Sigma Chi; Doris Hines, Alpha Beta Upsilon; Idabelle Arnold, Kappa Sigma Theta; Phyllis Albert, Delta Alpha Gamma; Jean Smith, Independents; Dick Jarvis, Sigma Mu Chi; Leland Thune, Delta Kappa Phi; Al Rooney, Sigma Zeta Epsilon; Dick Names, Alpha Chi Nu; and Jim Arntson, Omicrons.

## Kappa Phi

Cabinet members of Kappa Phi held a potluck dinner Tuesday, November 30, at 5:30, at the home of Dr. Williston.



## THETAS HOLD MASKED DANCE

Lambda Pledges Sneak; Christmas Plans Occupy Sororities

An air of mystery will prevail tomorrow night, Saturday, at the Fircrest Golf Club when Kappa Sigma Theta will hold their masquerade dance. Assisting Miss Dorothy Shaw, who is chairman, are Misses Frances Tarr and Phyllis Anderson. Johnny Long and his orchestra will play for the affair.

An incomplete guest list includes the following: Dick Sloat, Bob Brotherton, Norm Mayer, Russ Perkins, Carl McConnell, Roy Langton, Jack Kimball, Joe Beal, Don Harriman, Al Rooney, Henry Shaw, George Olluck, Norman Runions, Jim Newschwander, Charles Underhill, Bob Sprenger, Gene Albertson, Leo Yuckert, Ronald Whitley, Chuck Fishel, Wilton Vincent, Wayne Neely, Les Damon, Judd Day, Gene Bennett, Duke Campbell, John Slipp, Bill Burroughs, Bill Wood, Bob Bjorklund, Bill Stevenson, Ronald Grant, Dick Horr, Bob Trimble.

### LAMBDA SIGMA CHI

Lambda members were foiled again, when between the hours of four and seven on November 24, crafty pledges slipped away to the recreation room of the Pacific Match Factory where a pot luck dinner, games, and dancing were enjoyed. The ancient crime of kidnapping was successfully put into effect, when pledges captured members Betty Betz and Dolores O'Connell. Instead of forcing the traditional torture upon them, however, they allowed them to enjoy the fun.

Hostesses included the Misses Betty Blood, Gerry Alexander, Signa Byrd, Janet Hatch, Lorraine Holshouser, Helen Keho, Virginia Krogh, Beth Lee, Betty Lee, Gwen Roach, Eleanor Robison, Marjorie Wickens, Margaret Wilson, Muriel Woods, Pat Williams.

Guests were Bob Lloyd, Dominic Grabinski, George Fisher, Waxy McDonald, Bob Anderson, Leo Yuckert, Bob Bjorklund, Cliff Rawnsley, Dick Haley, Chet Grimstead, Bob Johnson, Bill Reynolds, Johnny Winslow, Johnny Fowler, and Jess Dawkins.

Prof. Lyle Shelmidine and Miss Doris Fickel chaperoned the group.

### Alpha Beta Upsilon

The Mothers' Club of Alpha Beta Upsilon entertained in the sorority room the afternoon of November 18 with a tea in honor of pledges and their mothers. On the program were included a welcoming talk by Mrs. W. R. Coffman, mother of a charter member, and vocal selections by Mrs. F. W. O'Neill, accompanied by Mrs. Raymond L. Powell.

Special guests included Mrs. Charles T. Battin, Mrs. Raymond Seward, and Mrs. Lyle F. Drushel.

The committee in charge of the Beta room decorations for Christmas includes Annabel Miller and Jane Ogden, co-chairmen; Doris Hines, Dolores Harget, Evelyn Bond, Kathleen Sherrill, Dorothy Haugen, Helen Gates, and Julia Joski, as announced at the sorority meeting held last Wednesday evening. Miss Kathleen Sherrill gave a program of piano selections.

### Delta Alpha Gamma

Miss Rosemary McElwain was hostess at her home on North

Shop The ENCHANTED AISLES  
**RHODES**

## Mu Chis to Hold Costume Dance Tonite at Club

Delta Kapp Semi-Formal To Be at Masonic Temple

Dressed in costumes to represent popular songs, members of Sigma Mu Chi fraternity and their guests will dance to Cliff Rawnsley's orchestra at the Lakeside Club tonight.

Joe Price is chairman of the dance, with Herbert Hite, John McDonnell, and Paul Juelling on his committee. Prizes will be given for the best costumes, and photographers will take pictures of the dance which will be submitted to Life Magazine.

After the dance members and guests will be served refreshments at the Club.

Delta Kappa Phi will have its pledge dance tonight at the Masonic Temple, from 9 to 12 o'clock. Stanley Dahl is in charge, assisted by Bud Barret, Al Pollock, and Leland Thune.

## Spurs Entertain 'Inactives' at Fete

Newly elected members of Spurs are giving their annual dinner for last year's active Spurs Monday, December 6, in the Home Economic's room at 5:30 o'clock. The active members of Spurs will present last year's members with their inactive member emblems. On the committee planning the dinner are Miss Lois Kuhl and Miss Ina Marie Seawright. Irma Juelling, Phyllis Anderson, and June Peele are in charge of the program.

14th Street, Wednesday evening, December 1, for the Delta Alpha Gamma sorority meeting. Miss Joan Roberts acted as chairman of the program committee with the Misses Pomona Hudson and Esther Waterman assisting.

Further plans for the annual sorority Christmas party on the afternoon of December 15 in the sorority room were made. Miss Betty Noble was appointed chairman of the committee in charge. Serving with her are the Misses Doris Granlund and Pauline Pumphrey.

Miss Betty Bannister will serve as chairman of the Christmas room decorations, the Misses Virginia Daugherty, Janet Powelson, and Elsie Wahlgren are the other members.

### KENNELLE-ELLIS Artist Photographers

403 Roxy Theater Building  
MAin 7319

"Be Budget Wise" and  
Budget With  
**HELEN DAVIS**  
SMART APPAREL  
763 Broadway

The New in Popular Music  
or RECORDS  
35c—3 for \$1  
**Ted Brown Music Co.**  
1121-23 Broadway

TO SOMEONE —  
**Your Photograph**  
WILL MEAN MORE THAN ANY OTHER GIFT  
Our Portraits Assure Distinction and the  
Economy of Quality  
**Smith Studio**  
753 Broadway Phone BR 1627

## Club Notes

Monday, November 22, La Mesa Redonda, Spanish club, met at the Conservatory of Music and pledged two new members: Annabell Miller and Harry Coleman. Jean Smith, Carolyn Geddes, and Joe Beal officiated at the pledging ceremony.

The entertainment of the evening was furnished by the pledges and consisted of a mock radio skit in Spanish. Doris Hartman, Helen Gates, Mrs. Beatrice Johnston, Annabell Miller and Harry Coleman comprised the cast. Refreshments were served after the program.

Plans for the next meeting to be held December 13 will include a Christmas theme. Christmas carols will be sung in Spanish and each person attending is requested to bring a gift to be exchanged and not to exceed ten cents in cost. Anyone that has had Spanish is welcome to attend the club.

At a recent German club meeting members were fortunate in having as guest speakers Prof. Grath and Prof. Meyer of the University of Washington. Prof. Grath discussed Thomas Mann, the great German author, mentioning the possibility of Mann coming out to Washington in the spring. He is now in this country because he disagreed with present German politics. Mr. Grath said.

Prof. Meyer talked of the German language as a literary language, as compared with the common or low German. He stated that there is as much difference between them as there is in the correct English and that commonly used.

The meeting was held at the home of Richard Wagner. Afterward refreshments were served to the guests. Among the guests were Dr. and Mrs. Tomlinson and Bob Eccles, graduate from Olympia.

To help bring Christmas into homes less fortunate than their own, the Independents are planning Christmas baskets. Each Independent is asked to bring a potato and an apple, to be put in the boxes in the cloak room, and five cents, which goes into the tin box. All are asked to cooperate.

On the basket committee are Jean Smith (chairman), Helen Sargent, Paul Seto, Luella Gibbons, Gene Sutherland, and Katharine Love.

**FISHER'S**  
"Tacoma's Own Store"  
Shop the Fisher Way!  
IT PAYS

**HITS THE SPOT**  
Hamburgers and  
Root Beer  
**XXX Barrel**  
3505 So. Tacoma Way

## Otlah Women Honor Mothers

With the coming of the Christmas holidays, women members of Otlah are once more making plans for their traditional tea in honor of their mothers. Friday afternoon, December 11, with hours from 3:15 to 5:00, has been selected as the date by the committee, Miss Cora Belle Griffin and Miss Eleanor Newman, co-chairmen for the affair assisted by Misses Jean Hartman and Maurita Shank.

After a welcome by Miss Leo, the Campus Playcrafters, under the direction of Miss Jones, will present a Christmas play. A reading by Maurita Shank, a vocal solo, and an organ selection will conclude the program. Tea will be served in the foyer, the large windows above the main stairs displaying decorations in the seasonal motif.

## HELEN ROSENWIEG WINS SHOW PASSES

Miss Helen Rosenzweig upheld the superiority (?) of the fairer sex by picking seven out of a possible ten winners in the football contest sponsored by the sports department of The Trail.

Thirty boys and two girls entered the contest which makes Miss Rosenzweig's victory all the sweeter. Practically every contestant picked Pacific to beat CPS sad to relate.

One bright lad picked Pacific to beat CPS by a score of 3 1/2 to 1 1/4. He also picked Yale and Harvard to tie 13 1/2 to 13 1/2. Such brilliance should be rewarded handsomely, but it is generally understood that this genius dropped his mathematics paper into the ballot box by mistake.

So, to the winner and feminine sex in general, we shamefully bow our heads in humble admiration. "Life for men is full of zest except when picking a football contest."

### For YOUR NEW YEAR'S PARTY

- BALLOONS
- BLOWOUTS
- PAPER HATS
- NOISE MAKERS

**Neal E. Thorsen**  
926 1/2 Broadway MAin 4861

For originality in your dance programs and invitations stop in at  
**PIONEER**  
INCORPORATED  
PRINTERS and STATIONERS  
12th and A Streets

QUALITY  
**KNITTING**  
COMPANY  
Makers of  
FINE SWEATERS  
403 So. 11th & Mkt.

## WIN PRIZE AT VARSITY BALL

Inspirational Award To Be Given

At the Varsity Ball next Saturday evening, CPS students will once more honor members of our Alma Mater's football team. A highlight of the dance will be the crowning of the Varsity queen. Candidates for the royal honor are Misses Maurita Shank, June Everson and Ina Marie Sewright.

Clarence Keating announces several prizes will be offered to the guests. A five-dollar Dalton hat will be awarded to the person who guesses the most accurate number of beans in a large gallon jug. His lady friend will be complimented with a compact. Other prizes given will be an autographed football as a door prize and a five-pound box of candy for the winners of the prize waltz. At this time, also, the presentation of the Inspirational Award will be made.

Decorations will follow the general theme of a track meet under the direction of Cameron McKennon. Others serving on the committee are Bob Bond, Bob Sprenger and Charles Underhill.

### Sprenger & Jones JEWELERS

College and Fraternity Pins  
a Specialty  
1147 Broadway BRdy. 4372  
TACOMA

For Distinctive  
**Gifts**  
Shop at Ruth Evans'  
**Cabin Craft Nook**  
757 St. Helens Ave.

MEET THE GANG  
at  
**BURPEE'S**  
6th and Pine

FOR THAT—  
**Fraternity  
Dance!**  
SEND A  
**CORSAGE**  
from  
**ANDERS**  
FLORIST  
255 So. 11th St. MAin 7113

## SKing This Year?

We Offer a Bigger  
Line Than Ever To  
Select From... See  
Us FIRST!

Everything  
for the SKIER

**WASHINGTON HARDWARE CO.**



# LOGGER SPORTS

## Hoopers Split Double Bill With U.S.S. Maryland

**First Team Drops Contest By 60-35 Score; Reserves Win**  
By Cliff Rawnsley

In a ragged game last Wednesday night, the Logger basketball team was sunk by the sailors from the U. S. S. Maryland, by a score of 60-35. The game was fairly fast with the elimination of the tip-off play at center after every basket. The game started out at a good pace, but the navy soon found the hoop and at halftime the score was 30-17. In the second half the Loggers appeared tired and the sailors sank goal after goal to put the game on ice for them. The game showed up a few defects on the Logger team that will eventually be corrected. Mainly, they were too slow in breaking fast and in checking their man under their own basket. Kirchoff of the navy led all scorers with a total of 17 points.

In the preliminary game, the CPS reserves downed the reserves from the navy with a score of 48 to 22. The reserves showed plenty of power, uncovering many new players. Most promising of them was George Mitchell, a freshman who hails from Seattle. Time and time again he proved that he was a capable ball handler and as the season wears on, he should develop into one of the mainstays of the team. Williams, also a freshman, was high point man for the Loggers with 10 points. Slattery had 12 points to lead the sailor reserves.

Coach Joey Mack has arranged a six-game practice schedule that will carry up to December 17, when the team will disband for the Christmas holidays. The Loggers' practice games will all be played at home with the exception of one at Fort Lewis. Following is the practice schedule:

- Dec. 3—Kist Bottlers
- Dec. 8—Fort Lewis
- Dec. 10—Johnson Paint
- Dec. 14—Chillas
- Dec. 16—Fort Lewis (at Fort Lewis)
- Dec. 17—Johnson Paint

**Varsity Game**

CPS (35) (60) Maryland  
Carpenter (8) G (2) King  
Tollefson (6) G (2) Rowe  
Pollock (8) C (10) Whipple  
Stoffel (2) F (17) Kirchoff  
McFadden (0) F (11) Wilson  
Subs: CPS—Mitchell (3), Good, Smith (4), Starkey, Williams (4). U. S. S. Maryland—Slattery (2), Spillsbury (11), Ramsey, Chambers (5).

CPS (48) (22) Maryland  
Mitchell (8) G (2) Oliphant  
Good (8) G (0) Reese  
Williams (10) C (1) Ramsey  
Fyfe (8) F (12) Slattery  
Starkey (5) F (5) Moon  
Subs: CPS—Roe (4), Steeves (5), Davis, Seabeck. U. S. S. Maryland—Grier, Rowe (4).

## BENCHWARMER

**WHAT IN SAM HILL IS WRONG WITH CPS ? ?**  
By HERBERT HITE

School spirit, a vague and undefinable term at best, but without which no student body is worth a hoot, is strangely missing around all the campus activities of the College of Puget Sound.

We have the same extra curricular programs other schools have . . . We have as good or better teams as the schools with which we compete possess. True, there is some question about the value of the schedules which are arranged for the Maroon and White athletic teams, and maybe the Varsity football team needed new suits pretty badly, but on the whole we certainly had something to cheer about at all the home games on this year's football schedule.

But where was the crowd ? ? ? At only one or two games during the whole home schedule was there more than a sprinkling of CPS students . . . Maybe we're wrong, but that certainly isn't our idea of school spirit . . . Remember the Caravan to Forest Grove ? ? Four cars made that trip, and it wasn't the fault of those in charge, you can bet your grandpa's eye teeth . . . Chuck McNary and Paul Jueling did everything but shanghai the student body down to Forest Grove, and where did it get them ? ? ?

Now basketball season is here, and if past records are any indication, the basketball teams will get about one-third as much support from the student body as the football team . . . Last year a Maroon and White quintet thumped the University of Washington, and everybody thought that was pretty swell, but they didn't do anything about it . . . No more came out to see the following games than did before.

Part of the reason for that, of course, is there is no place to put a big crowd if by some accident it did happen to show up. Two rows of bleachers four deep can't accommodate enough of a crowd to make expenses when the visiting team has to be paid a good-sized guarantee . . . The gym needs a balcony.

December 10 is the date of the annual conference meeting of representatives of each college to make up schedules for the coming seasons . . . This is always an important meeting, as eligibility rules besides the schedule are decided . . . This year rumors of other big things to happen at this conference make it of particular interest . . . And it wouldn't surprise us at all if the Pacific Northwest Conference went all to pieces at this meeting.

When and if it does CPS is in line for a new conference setup, always supposing that enough money is budgeted to permit the Varsity to play some of the bigger teams in this section of the country . . . This new conference has been discussed for several years . . . Which schools it can include which have desirable eligibility rules is a problem, but it is pretty definitely decided that this setup will not include Albany or the College of Idaho.

## Delta Kappa Phi Independents Win

Continuing the battle for intramural supremacy in badminton, the past week saw several changes and upsets in the standings.

On Tuesday, Sigma Zeta Epsilon dumped Delta Pi Omicron two matches to one, while the Omicrons, playing in their second match of the day, eliminated the Mu Chis also by a score of two to one.

For the Zetes, Sprenger and Madden defeated Enright and Fisher, 15-0 and 15-11, in a closely fought match, and Fishel and Rooney shellacked Graham and Kruckeberg, 15-4, 15-2.

In the second match of the day, the Enright and Fisher combination lost to Yuckert and Rawnsley, 11-5, 15-3, 15-8. Graham and Kruckeberg beat Mitchell and Starkey, 15-8, 15-3, and Ramsey won his second match of the day from Mykland in a close contest by scores of 15-12, 9-15, 15-12.

On Thursday the Delta Kappas won their chance to play for the championship by defeating the Zetes two games to one. Myers whitewashed Lamka, 15-5, 15-1, and Mosolf and Cheney handed the Zetes their second shellacking of the day by a score of 15-4, 15-1. The only Zete win was Rooney and Fishel's defeat of Bond and Barrett in the closest game of the season by a score of 13-15, 15-13, 15-11.

The Independents continued their recently acquired winning ways by eliminating the Omicrons two to one. Albertson and Vermont defeated Fisher and Enright, 15-7, 11-15, 15-11. While Lokken and Anderson were defeating Beal and Bertholet, 15-11, 10-15, 15-8, Ramsey was shellacking Porter 15-2, 15-3.

## W. A. A. Hoo

By Ruth Jensen

### Volleyball

Inter-class volleyball, first and second team games have been underway for the past two weeks. At this point the Juniors are at the top. The following is a list of the teams, captains, and percentages of games won.

Juniors—			
Tina Nelson	2	1	1.000
Seniors—			
Eunice Perkins	1	1	.500
Teams—Captains W. L. Pct.			
Sophomores—			
Lois Kuhl	1	1	.500
Freshmen—			
Lil Hendrickson	1	1	.500
Pop Overs—			
Peggy Butler	1	1	.500
Skyrockets—			
Jean Jesperson	0	2	.000

### Swimming Turnouts

Notices have been posted on bulletin boards. Please refer to these for particulars.

### Basketball Turnouts

Fifth periods on Mondays and Wednesdays until the volleyball tournament has been completed, turnouts for basketball will be held in the gym.

### Recreation

We will recreate in the gym again this Friday so hop into your dancing shoes (tennis) and dash over.

If . . .

you want something GOOD

**Don's Pagoda**

38th and South Tacoma Way

## ROXY

NOW!

Greta Garbo  
Charles Boyer

—in—

"CONQUEST"

Extra

December Issue

March of Time

## MUSIC BOX

NOW!

William Powell  
Myrna Loy

—in—

"DOUBLE WEDDING"

—plus—

PAT O'BRIEN in  
"BACK IN CIRCULATION"

## BLUE MOUSE

NOW!

JOE PENNER  
Park Ya Karkus in  
"LIFE OF THE PARTY"

and "The Man Who Cried Wolf"

## TEMPLE

NOW!

ROBERT TAYLOR  
Eleanor Powell in  
"Broadway Melody of 1938"

and "Behind The Headlines"

Diamonds Watches  
Rings

Watch Repairing

**JERRY WALTERS**

Jeweler

1101 BROADWAY  
TACOMA

## RIALTO

Hurry! Only a few more days!

GRACE MOORE

MELVYN DOUGLAS

in

"I'll Take Romance"

— and —

JACK HOLT, WYNNE GIBSON

in

"TRAPPED BY G-MEN"

25c to 5 p. m. — 35c nites

## LAKEWOOD

FRI. — SAT. — SUN.

GARY COOPER

GEORGE RAFT

in

"SOULS AT SEA"

— and —

V. MOORE - H. BRODERICK

in

"MEET THE MISSUS"

**INA BOWMAN**  
Styled Linens and Handkerchiefs

769 Broadway Winthrop Hotel

Footwear for College Students and Faculty

**Spellman's**  
**BUSTER BROWN SHOE STORE**  
1122 Broadway

**Corsages**

for the

Fraternity Dances

50c and up

**FARLEY'S**

Florist

6th & Anderson MA 6385

AFTER ANY DATE

**THE TABBY CAT**

South Tacoma Way and M Street

DANCE BIDS . . . PROGRAMS

**ALLSTRUM PRINTING CO.**

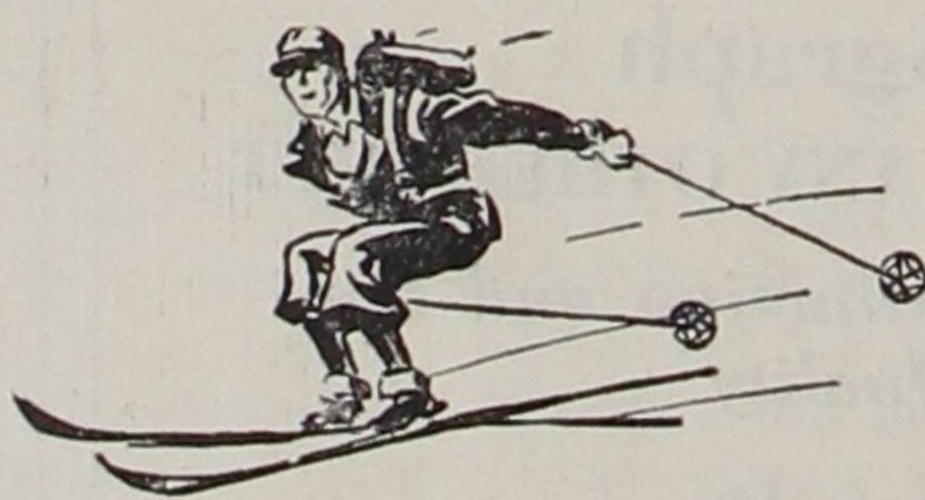
940 Commerce Street

MAin 6768

**RICHARDSON'S**

SKI SHOP—928 COMMERCE STREET

**SKI**



CLOTHING EQUIPMENT and SHOES FOR LADIES and MEN

**Tacoma's Store For Skiers**