

The Puget Sound Trail

VOL. 15, NO. 3

THE COLLEGE OF PUGET SOUND, TACOMA, WASHINGTON

OCTOBER 12, 1937

Committees Set For Homecoming

Maurita Shank Appoints Dance Assistants.

Plans for the traditional three-day Homecoming celebration are progressing rapidly, according to Maurita Shank, head of the dance committee, who has announced the following chairmen and committees.

Virginia Leonard, as chairman of the decoration committee, with Maynard Carlson and Ruth Jensen her assistants.

Marc Miller in charge of tickets, with Margaret Heuston and Betty Worden.

Dick Sloat, head of the advertising department; assisted by John McDonald. The pep department will cooperate in handling most of the publicity.

In charge of decorations for the sororities will be Betty Bannister and for the fraternities, Chuck Fishel.

John Clarke, general chairman of the whole affair, has appointed Norm Runions chairman for the radio program, which will work with the advertising department to make Homecoming a success.

Color Post Rites Held For Fresh

230 Matriculate in Traditional Ceremony.

Led by President Tom Ray and their other officers, 230 members of the freshman class marched through the arch and by the color post to become full-fledged members of the student body of C.P.S. With the faculty and the rest of the students looking on, student body president, Gordon Tuell, acted as master of ceremonies, while the three presidents of the upper classes, Gene Millikan, Sally Jensen and Richard Sloat, spoke to the frosh, along with Mr. John Cocheran, president of the alumni, and President Edward H. Todd, who gave permission for the gate to be opened.

The color post was erected by the freshman class of 1916, at the suggestion of President Todd, and since then the traditional matriculation ceremony has been held annually.

In a welcoming speech to the freshmen, President Todd spoke of the fiftieth anniversary, and of the hopes and aims of the college, for new buildings and new equipment.

Led by Prof. Walter S. Davis, the freshman class took an oath to support the traditions and the ideals of the College of Puget Sound.

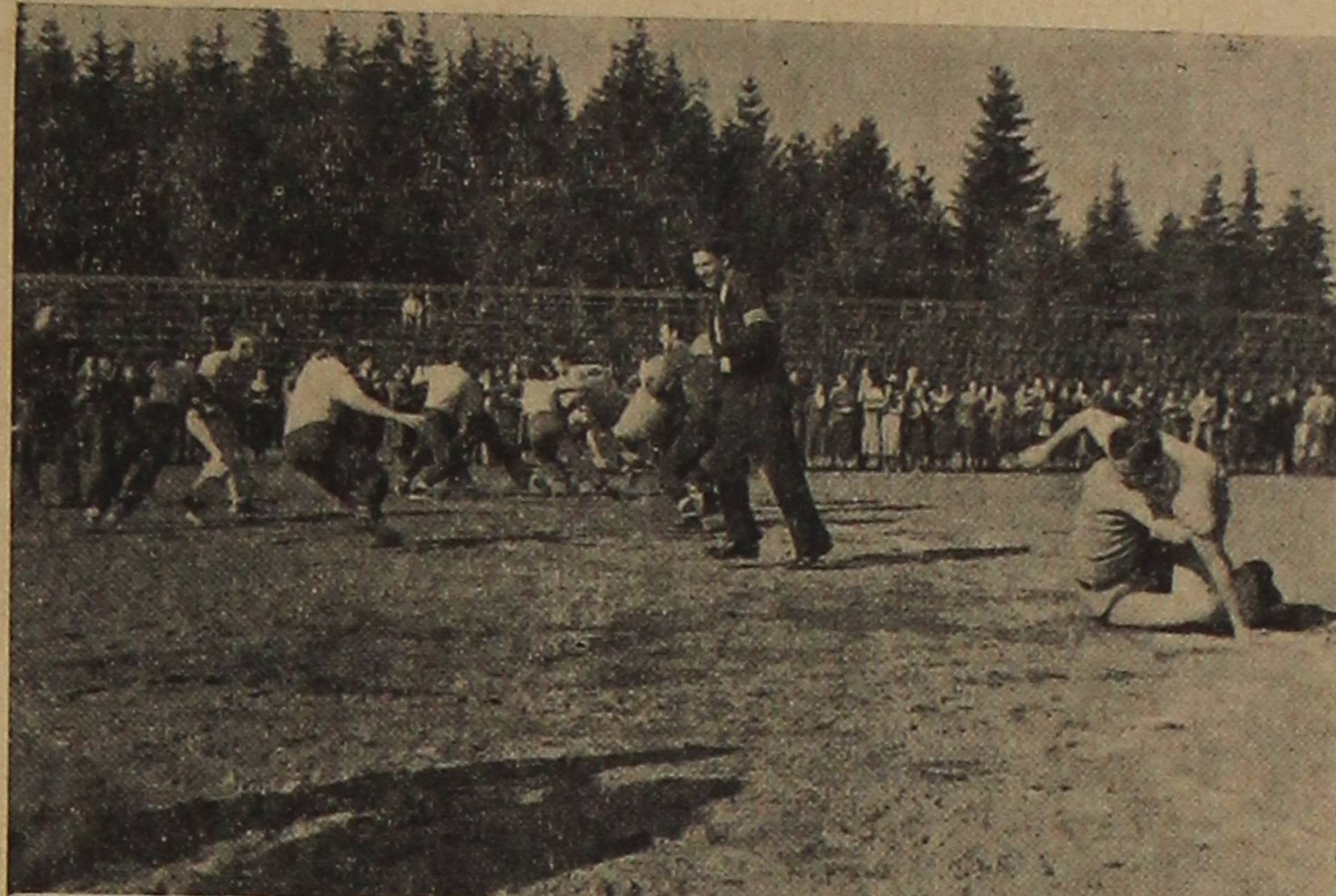
Miss Lena Sanders Running sang, "Ave Maria," accompanied by Professor D. Robert Smith at the organ, with Ellis Ronbeck playing the violin obligato.

Millikan Elected

Under the direction of Jane Anderson, election was held by the senior class to fill the positions of president and vice president. Gene Millikan was elected president and Bob Bond, vice president.

Those resigning were: Bruce Hetrick and Betty Kuhl, president and vice-president, respectively.

BAG RUSH; VICTORS



While nearly the whole school cheered their favorites, a sweating and straining squad of sophomores walloped a less experienced, but none the less stubborn freshman foe in the annual bag rush, by a close 709 to 598 score.

The sophomores piled up a heavy total in the first heat, while the freshmen were still getting their bearings. In the second and final heat, however, the freshmen came back and nearly overcame the soph lead. The final accounting found that the frosh were nosed out by one of the closest scores in the history of the traditional class struggle.

Out of a cloud of dust a short 30 seconds after hostilities opened, Jack Harrington pounded down the field bearing the 50-pound sack, amid the wild cheers of the sophomore partisans on the sidelines for the first score of the event.

The gold-plated weather-vane for the hardest-fought and the most spectacular match goes to freshmen Wally Starkey and Johnny Marble, against sophomores Jim Weldon and Al Good. The battle was nip and tuck from the starting whistle to the final gun. Before the battle was a minute old, Weldon had dumped the sack into precious paydirt, and Messrs. Starkey and Marble were resting ignominiously in reclining positions. The bag was placed back in position, and immediately after the whistle had blown for the return engagement, the determined frosh turned the tables by some fast maneuvering and evened the score. From then

on, the affair reached an impasse. Neither team was able to punch the bag into scoring territory, but the frosh gained the decision on points when the final gun found the bag deep in soph territory.

The seemingly unavoidable casualty this year, victimized Howard Lynn, freshman. Lynn received a severe blow on the back of the noggin, which resulted in a slight concussion. At the time of this writing, the seriousness of this unfortunate incident was unknown.

Lineups for the two teams were as follows:

Freshmen: Louie Stewart, Bob Heaton, Dick Jarvis, Tom West, Tom Rommel, Bob Burt, John Sharpe, Leo Magrini, Wally Starkey, John Marble, George Mitchell, Stan Champ, Jack Perry, Howard Lynn, Bud Barret and Ray Grigal.

Sophomores: Lloyd Baker, Luther Fine, Gene Bennett, Jim Weldon, Al Goods, Ron Lorimer, Jack Harrington, George Hager, Bill Hoppen, Judd Day, Bill Wood, Bob Sprenger, Bob Hardy, and Dick Musser.

Nine New Members Enrolled For Band

Nine new members enrolled in the college band last week, and more are planning to play for the games, according to Mr. Wersen, director.

The new members are: Wilbur Baisinger, Charles Fitschen and Stanley Champ, clarinets; James Murphy, trombone; Frank Lawther and Emilie Nofke, trumpets; James Hicks, alto; and Brit Kellogg, sousaphone.

There is yet room for most instruments, Mr. Wersen says.

Appoint Anderson New Vice-Prexy

Appointing Jane Anderson vice president of the ACPS to fill the vacancy left by Helen Stalwick was the chief business of the Central Board meeting held last Monday.

The naming of a chapel committee concluded the meeting. Those appointed are Clark Gould, Bud Galbraith, June Peele, Jane Anderson and Irma Juelling.

JAZZ PIANO PLAYING CONTEST THURSDAY

Thursday student chapels will literally begin with a bang this week when a jazz piano playing contest between all the piano players of the four classes will compete for a cup to be donated by an unknown music critic. Applause of the audience will determine the winner.

Banquet Opens Debate Season

Question Announced; New Members Initiated

Official opening of the debating season, the local chapter of Pi Kappa Delta held its banquet at the First Presbyterian Church on Monday morning, Don Roberts acting as toastmaster.

The question as announced is: Resolved: that the federal labor relations board should be given the power to enforce arbitration in industrial disputes.

Several new members were initiated into Pi Kappa Delta. They are Barbara Healy, Stanley Nash, Margaret Gilstrap, Marie Gilstrap, Glen Ratcliffe, Ralph D. Simpson, George Forsythe, Charles McLean, Valen Honeywell.

Experienced debaters will meet every Wednesday in room 203; new debaters will try out Thursdays.

Shaffer Attends Meet

As chairman of the committee on registration, Dr. Shaffer attended a state-wide conference of Social Workers, which was held in Longview last Thursday. Mr. Muckey, of the Industrial Conference Board has addressed the labor relations classes of Dr. Shaffer during the past week.

Greeks Reveal Pledging of 54

Sorority Banquets Climax Fall Rush Season.

Climaxing the fall rushing season, 54 women pledged Saturday night at the four sorority pledge banquets.

Kappa Sigma Theta pledged the highest number, including Betty Olson, Deborah Webb, Florence McLean, Jane Marchesini, Geraldine Martin, Lillian Hendrickson, Marie Mulligan, Marjorie Thompson, Lillian Mattson, Signa Gustafson, Beverly Marshall, Gretchen Kunigk, Doris Christian, Patty Pierce, Cora Atkinson and Idabelle Arnold.

Lambda Sigma Chi

Lambda Sigma Chi came next in line with Eleanor Robinson, Margaret Wilson, Geraldine Alexander, Gwen Roach, Signa Byrd, Janet Hatch, Lorraine Holshauer, Marjorie Wickens, Betty Blood, Kelen Keho, Virginia Krogh, Beth Lee, Betty Lee, Muriel Woods and Pat Williams.

Delta Alpha Gamma

New members of Delta Alpha Gamma are Muriel Jackson, Wava Shelmidine, Barbara Shelmidine, Letty Schaufelberger, Betty Schaufelberger, Margaret Butler, Doris Hartman, Elsie Wahgren, Janet Powelson, Doris Rosellini, Dorothy Jane Finch, Pauline Pumphrey, Esther Waterman and Jean Hartman.

Alpha Beta Upsilon

Pledges of Alpha Beta Upsilon are Mildred Aylsworth, Evelyn Bond, Helen Gates, Margaret Gleiser, Doris Hines, Frances Hoss, Annabel Miller, Dorothy Palin and Elsie Wheaton.

Cookie Sale

The Independents are sponsoring a cookie sale Wednesday, October 13th, on the lower floor of Jones hall from 10:20 in the morning until 1:15 p.m., according to Miss Lela Sargent.

Puget Sounders See Double, Four Sets of Twins on Campus

It's not done with mirrors, this business of seeing double. The explanation is quite simple, really, for, you see, there are four sets of twins in school this year. And stranger yet (or maybe it isn't), all this "double trouble" is in the form of dainty misses. Wilma and Florence Ittner, sophomores; Margaret and Marie Gilstrap, sophomores; Betty and Letty Schaufelberger, freshmen, and Beth and Betty Lee, freshmen, are the spots before your eyes.

"Course we like being twins," said the Ittners, indignantly. "Besides, we've never been anything different, so how'd we know?" They like being twins from the publicity angle, too; it helps so in being noticed. "We do get tired of all the confusion being identical twins makes and constantly being asked 'Now, which one are you?' They are one of the sets of twins who do not dress alike. More clothes is the reason they give.

The Lee twins are also "publicity hounds," for they like being twins on account of the "stand-out-ishness" of the situation. Pooh, they ought to be quintuplets. "The hardest thing about being a twin," they confided, "is finding clothes just alike. They most all have to

be made." About the best thing, according to them, though, is the closer companionship which results from having a twin. The Lee girls aren't identical twins.

The Ittners and the Schaufelberger girls have at least one thing in common, anyway. They do not dress alike. "Oh, it gets tiresome," explained Letty, "and besides we never could agree on what to wear. Like the Lees, they are not identical. "The best part of all," they said, "is always having someone to go with and, of course, there is a deeper feeling between twins."

"Certainly there are no disadvantages to being a twin," responded the Gilstraps, indignantly to our question. According to Margaret, two heads are better than one and it never holds more true than in school work. Looking exactly alike helps a lot, too. For example, the time Marie had used up all her chapel cuts and needed the time to study. So, Margaret, who could afford another, took Marie's seat and Marie got her studying done.

"But the most fun of all," the Ittners insist, "is changing boy friends in the middle of a date and seeing how long it takes for them to catch on to the dupe."

The Puget Sound Trail

Member N. S. P. A.

Established September 25, 1922

Published Weekly During School Year

Official Publication of The Associated Students
COLLEGE OF PUGET SOUND

Entered as second-class matter at the Post Office at Tacoma, Washington, under the Act of Congress of March 3, 1879.

Subscription price, 75c per semester; \$1.00 per school year by mail.

Printed with Union Labor by the Honeywell Printing Company.

EDITORIAL STAFF

Editor-in-Chief - - - - - Ruth Leo
Associate Editor - - - - - Analie Duncan
Sports Editor - - - - - Herbert Hite
Society Editor - - - - - Marcie Woods
Features Editor - - - - - Wilma Ittner
Reporters will be chosen after a trial period of one month.

BUSINESS STAFF

Business Manager - - - - - Herbert Clarke
Assistant Business Manager - - - - - Paul Juelling
Advertising Manager - - - - - Dick Haley
Assistants - - - - - Betty and Letty Schaufelberger

Intercollegiate

Classmates in the Case school in Cleveland had their freshman president insured against being kidnaped by the sophomores in the annual bag rush. Lloyd's of London have the policy of \$10,000 which was taken out by classmates.

I like my roommate.
He never gets up in the morning to close the window.
He's always braggin' about his girl friend.
He borrows my clothes and my money.
He talks when I try to study.
But he can tie abow tie.

SCHOLASTIC

Information Bureau:

Q. What is a joke?
A. Anything a professor says with a twinkle in his eye.
Q. Do professors often joke?
A. They assure you that they do often.
Q. Are we bound to laugh at the jokes of our instructors?
A. We are bound by duty to roar at the jokes of our instructors.—Caldwell Coyote.

New York co-eds intend to marry "men of brains, character, adequate income, and a nice sense of humor." The bigamists!

In their declining years American barbers' chairs are shipped to the Belgian Congo, where they are used as tribal thrones.

Parents spend half their time worrying how a child will turn out, and the rest of the time wondering when a child will turn in.

A new species. A human "gimme" pig.

Backstage

Newcomers whose names appear in the cast of "Night of January 16th," are Gene Albertson, James Arntson, Maurita Shank. Gene is a transfer from Denver university, and from his looks and the looks of things in general, he will probably be seen in various productions. Arntson is a freshman, direct from Stadium high. Miss Shank, a senior, talented in scholarship and art, gives dramatics a break for the first time.

Remember Bob Corliss as the ape in Dick Sloat's and June Peele's most artistic stunt—"The Pink Persimmon Tree?"—Dewane Lamka's rueful comment was "Even I could act with a head like that."

Spanish Club Meets

LaMesa Redonda had a pot-luck dinner and played games in Spanish at their second meeting held October 4th, with Jean Hartman, president, in charge. Visitors at the affair were: Janet Powelson, Doris Hartman, Barbara Healy, Mrs. B. Johnston, Allen Goldberg, and Harold Wheeler.

All students of Spanish who are interested in attending the next meeting, are asked to watch the bulletin board for announcements.

International Club Plans First Meeting

Presenting the American-born Japanese students' interpretation of the Sino-Japanese conflict, a group of Japanese students will be the guests of the International Relations club. Miss Katherine Yamamoto has arranged the program.

The club is welcoming back Dr. F. G. Williston, faculty advisor, who spent the last year as a professor at Yenching University, and at the University of Washington.

This meeting, the first of the year, will be held at 3009 North 16th street. All students interested in foreign affairs are invited to attend. Officers will be elected.

Kruzner Gets Fossils

The fruits of Donald Kruzner's vacation on Orchis Island are a collection of pleistocene fossils. Mr. Kruzner, a senior, found them 250 feet above the present tide lines, marking a readjustment since the recession of the ice age. These fossils are now in the collection of the geology department.

Central Board Meet

There will be a special meeting of the Central Board next Monday, October 18, at 12:05, in Room 108.

SHAVINGS off the PLANER

Due to technical difficulties, our planer had to shut down for a BIT last week but now is RUINING again and we can SHAVE OFF some PLANE FACTS.

We had a good opportunity to clean the useless old trash and debris from around the machine, but guess we should have burned it instead of sweeping it OUTSIDE—it seems most of it got back on the INSIDE.

APOLOGIES TO BOBBIE BURNS:

"I wish I had the GAB O' GEEHAN."

OLD SAWS:

Some girls are VOGUE on the outside and VAGUE on the inside.

"He never uses his head except as a rattle!"

"The essence of folly is acquiescence!"

HOG FUEL:

A pretty young co-ed at the pig-skin pow-wow the other night overheard a burly SOPHOMORE shout: "He's got Schwetz!" Indignantly she turned around and politely admonished him for poor grammar and added: "besides it's better to say GLOW." P.S.—Explanations may be secured from any of your A. S. C. P. S. officers.

GEORGE MARSICO gives a good idea of a good idea of how a substitute warms up.

FLORENCE McLEAN is quite a HOUND for dancing—she should be good at TRUCKING" . . . see above.*

RUFUS BEAL, that Southern syncopator of dreamy drawl, is always and forever talking to some sweet young thing. He graduates soon, and I guess Alabama is a nice place to build a home.

DICK PURTICH seems to be filling the vacancy in ALYS-MORE MAGNUSSEN'S life now that John Hazen is gone.

BETTY BETZ is throwing about half the football team for a LOSS.

BRAD BANNON'S soft lights and sweet music still hold their charm for RUTH RAYMOND!

MILLWRITING:

From advance notices of the coming—in fact, homecoming—play we can be promised an eventful evening. Norm Runions as a relentless district attorney can be depended upon to be a relentless district attorney. Gordon Too'l give a good account of himself we know. Jane Anderson and Virginia Smythe have always been tops. Although Maurita Shank has never performed on the stage for C. P. S., it almost goes without saying that she has talent—PLUS. Time will tell which shall inherit the Gladys Harding or Clayton Lupton limelight. In the meantime, we'll leave the rest to Gene Albertson—HEATH—the JUDGE.

REJECTS:

According to Business Law, all persons are presumably competent to contract—except infants, insane persons, intoxicated persons, MARRIED WOMEN, etc, and etc., and etc.

WOULD YOU SAY IT?

"Greetings, It's been so long since we've seen each other! YOU HAD ONIONS FOR LUNCH, DIDN'T YOU?"

"Darling! I hardly recognized you—YOU'VE GAINED SO MUCH WEIGHT!"

"My, but you're dressed up! New dress, new shoes, new gloves. DID YOU MAKE THAT DRESS? AND THOSE SHOES LOOK SO BIG AND COMFORTABLE!"

BAG O' SAWDUST

JUDD DAY has a CLUTCH like a 1918 FORD.

JACK HARRINGTON carried off the honors—or the bag—while JACK KERRY and HOWARD LYNN bit the dust.

GEORGE HAGER with his AVOIRDUPOIS made a lot of noise and effort but little YARDAGE!

TOM RAY and DICK (Bob) SLOAT must have a GENTLE-MEN'S AGREEMENT not to hurt each other. It has been the tradition for the MAIL BATTLE to be against the TWO PRESIDENTS, but one must have been afraid and the other glad of it.

SKINNY BENNET thought he was in a FREE-FOR-ALL. He used his head—for a battering ram—probably thought it was a BAG CRUSH!

Now that the FROSH must continue wearing their Green "NOGGIN PROTECTORS," the SOPHS can have a great time throwing them (the caps) into the HOMECOMING BONFIRE. Everyone in and out of the school will be there to see the festivities—I HOPE—PLUG.

GRIST FOR THE MILL

I'm doing all right—Leo Magrini assured me that he wouldn't take me for a ride . . . even if I am walking.

Now that the SORORITIES have picked out the girls that they want to BIG SISTER for a semester, we hope they don't drop them like a HOT PERTATER after they are assured of membership. It's too bad that they can't just GRAD THA GAL and carry her into their lair for a bit of choice gossip—the winner being the one who gives them the low-down on the most of the best. I'm afraid that they would be in more of a QUANDARY than ever.

It looks like the Theater League is a regular clearing house. Dick Horr checks in, and before long Herb Clarke checks out (he's a singer: "Let McCALL you sweetheart") But he doesn't seem to mind, as re's in other leagues of acting. By the way, did you see THIN ICE?

The Lambdas should do pretty good with their piano—they sure get the pick of the FRATERNITIES with it. FRATERNITY LIFE UP A TREE.

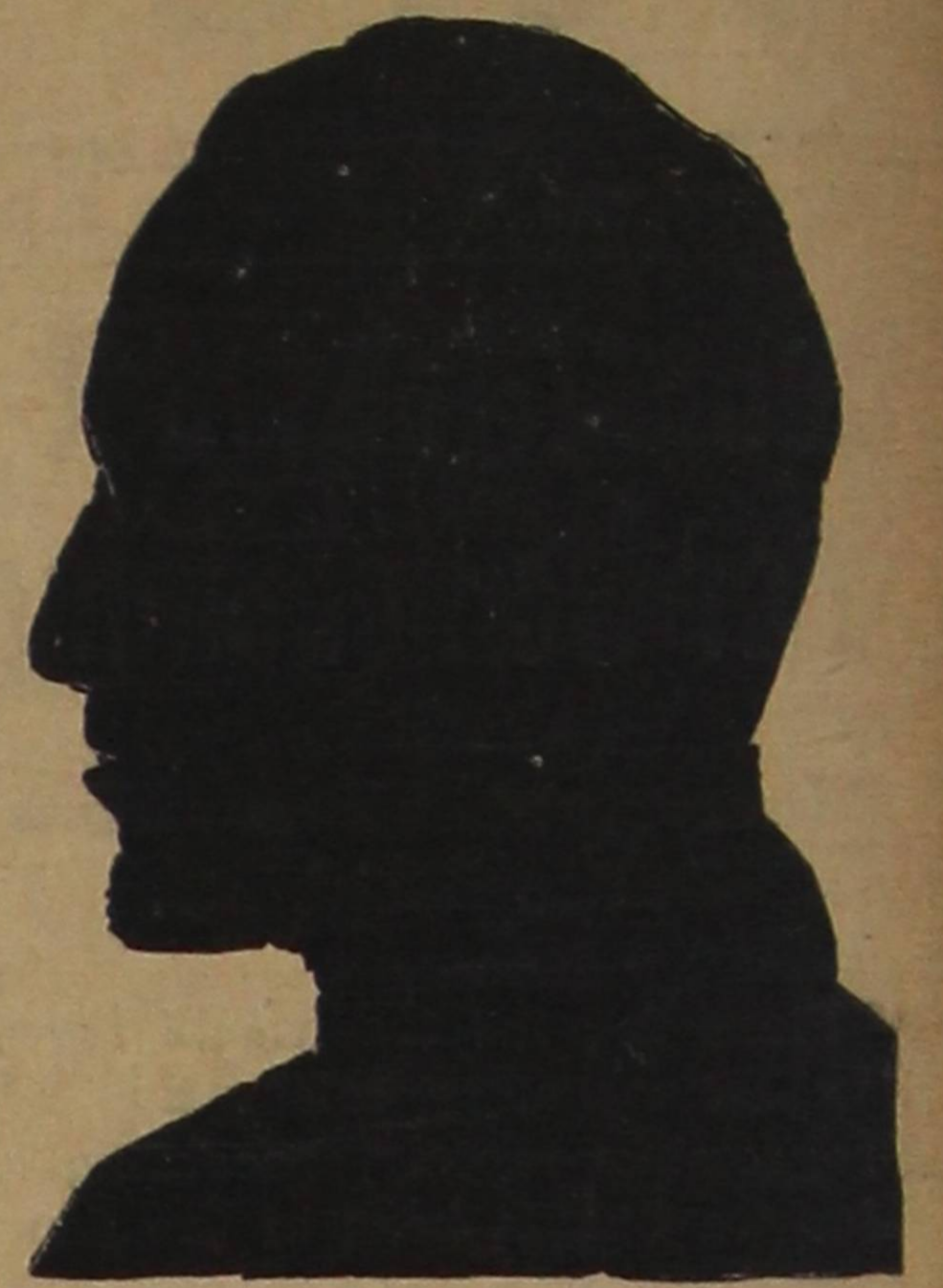
After looking for a HOUSE to rent for weeks and becoming very discouraged, a genuine sigh of JOY escapes the industrious members when one is finally procured. They all sink down on the OLD MOTH-EATEN DAVENPORT and relax for a moment, saying: "Well, anyway, this is the last" BUT NO LEASED!

"Off all sad words of tongue or pen

The saddest are: "I'VE GOT A PIN!"

After the first week I've decided that ability to write is the easiest part of a column . . . The prime essential is to be able to RIGHT IT!"

CPS Personalities



Gordon Tuell, president of the Associated Students, came to CPS from Stadium. His chief interest has been dramatics. Tuell was seen in "Death Takes A Holiday," "The Last Mile," "The Dark Tower" and "Personal Appearance. This year's Homecoming play, "Night of January 16th," also finds him cast in a leading role.

During his freshman year he was a member of the Adelphian Choral Society. While a sophomore, he was representative to Central Board and president of Knights of the Log. "Tide," CPS magazine, claims him as a contributor. Last year he was elected as one of the better CPS skiers.

Preview of Art Exhibit To Be Held

A preview of the art exhibit of water colors and oil paintings by contemporary artists will be held Monday evening, October 18, from 8 p.m. to 10 p.m., in the college art gallery, fourth floor of Jones hall.

The reception in the chapel for members of the Tacoma Art Association will be in charge of Mr. Kohler, art instructor at CPS.

From October 19 to November 13 the galleries will be open to students and friends of the college. The hours will be: Week days: 1 p.m. to 5 p.m., Monday evenings, 7 p.m. to 9 p.m., and Sundays, 2 p.m. to 6 p.m.

Those wishing to join the Tacoma Art Association may do so for a fee of fifty cents, which entitles them to membership privileges for one year.

Recreational Music Program Offered

Have you a suppressed desire to exercise your musical talents in public?

Then your big moment has arrived.

This winter, the Tacoma public school system is again sponsoring a recreation music program designed to accommodate all musicians, from bathtub tenors to tuba players. Professor Bennet will conduct a mixed chorus at Jason Lee intermediate school on Wednesday evenings, beginning at 7:30 o'clock. At the same hour, a recreation symphony orchestra, under the baton of Louis G. Wersen, will rehearse at Stadium High school.

Mr. Bennet announces that there will be no tryouts or individual requirements necessary to enroll in the chorus. A very nominal fee will be charged. The choristers will work on Handel's "Messiah" and college students are especially invited to attend.

Mixed Recreation

Mixed recreation will start Friday afternoon in the gym with Pomona Hudson in charge. Volley ball, ping-pong, soft ball and badminton will be played from 1 to 4 o'clock.

Sororities, Fraternities, Clubs

Edited By Marcia Woods

Co-Ed Styles To Be Shown Friday

Everything from lounging clothes to formals of the naggiest variety will be displayed in the style show to be sponsored by the Women's Federation Friday, Oct. 15, according to Miss Betty Worden, president of the organization.

The gowns will be shown in the auditorium from 3 to 5 o'clock. Among the special numbers to be displayed for the benefit of Puget Sound coeds and the dismay of the holder of the family pocket-book, are a variety of special outfits in the latest fall color schemes for campus flings.

Clothes for the young lady from sun-up to sun-up again—that's the program for the coming style show. Not only the smart attire of a strenuous school day, but also our lady at the formal dance, and, later at home, relaxing in the stylist's latest creation of lounging robes and pajamas.

Also clothes for older women cut to become every shape and figure will be exhibited to the edification of CPS co-eds.

All of the dresses are to be shown through the courtesy of Frank M. Skinner's shop on Broadway.

General committee chairman of the function will be Miss Marjorie McGilvrey. Assisting her are the Misses Mildred Brown, Edith Mae Peele, Barbara Healy, Jane Carlson and Virginia Dougherty.

Kappa Phi Holds Traditional Tea

The home of Miss Doris Fickel was the setting for the Kappa Phi rainbow tea Sunday afternoon, October 10. Decorations were in pastel shades, of white and silver. Kappa Phi rosebuds were the flowers. Mrs. Cyrus Albertson, a new patroness, presided at the tea table. Special guests included Miss Ruth Hallin, Mrs. E. H. Todd, Mrs. F. M. Raver and Mrs. S. F. Herrmann.

Miss Betty Schaad was chairman of the committee in charge of the tea, assisted by the Misses Frances Shelhammer, Mary Keeler and Mary McKenney.

Knights of the Log

With the acceptance of Lou Grant as their first faculty adviser, the Knights of the Log launched out on a new constructive service program.

"Though the membership is small, the efficient manner in which the Knights of the Log handled the bag rush and freshman mixer indicates that they are going to be of real service to the school," Grant predicted in an interview.

The boys are also doing a fine job of ushering at the games, illustrating our motto for the coming year—to be of greater service by doing things well."

Mrs. Keil Heads Gamma Mothers

The Mothers' Club of Delta Alpha Gamma was entertained at dessert-luncheon last Tuesday in the home of Mrs. E. H. Butler, on North 24th street. Assisting her in serving was Mrs. Charles Westcott.

A business meeting followed the luncheon with election of officers. Mrs. H. L. Keil was chosen president; Mrs. T. W. Noble, vice-president; Mrs. Paul Granlund, recording secretary; Mrs. Lura McGilvrey, corresponding secretary, and Mrs. F. M. Albert, treasurer.

"Democracies Train Leaders"

—Says Prof Williston

"Democracies, while they may blunder and make mistakes, have proved amazingly effective training grounds for future leaders. When Stalin and the other dictators of the world, die there will be no one to take their places," said Dr. Frank G. Williston when he spoke to the joint meeting of upper-classmen and freshmen YWCA groups, during chapel period last Tuesday.

Regarding the Oriental question Dr. Williston said: "I think we can discount all the fears we hear expressed that Japan, once she gets a firm foothold in China, will head for the Pacific coast."

Miss Virginia Smyth, chairman of the World Affairs Committee, introduced the speaker.

At the YW Fireside which has been postponed from October 13 to Sunday, October 17, at the Conservatory of Music, from 3 to 5 p.m., Miss Dorothy Punderson will be guest speaker.

Students of 23 Religions Here

That twenty-three different religious affiliations are represented by the College this year, was revealed today by figures released by the Registrar.

Methodists lead with 212 students, or 35.5% of the roll, followed by Presbyterian with 80 students, or 13.5%. Other groups that were represented by ten or more members were the Roman Catholics, Baptist, Lutheran, Episcopal, Congregational, Christian Science, Christian, Protestant and Buddhist.

The remaining groups with less than ten were the Community, First Independent, Divine Science, Evangelical, Seventh Day Saints,

CALENDAR OF EVENTS
(October 11-17)

Monday, Oct. 11—Pi Kappa Delta dinner at the First Presbyterian church.

Friday, Oct. 15—Fashion Show in the auditorium.

Saturday, Oct. 16.—Delta Kappa Phi dance.

Sunday, Oct. 17—YWCA fireside program in the music conservatory.

Fraternity Selects House Committees

Delta Pi Omricon appointed several committees to take charge of Homecoming and also several chairmen and managers were appointed. Howard Annis, noise float; Dickens, Carl Clemons, Harry Coleman and Bob Datin, Homecoming; George Fisher, Paul Sorensen, House Committee; Dick Musser, Paul Sorensen, Finance; Howard Annis, John Clarke, Bob Datin, Auditors; Jack Enright, Pledge Captain; Howard Annis, Inter Fraternity Representative; John Clark Social Chairman; Joe Beal, Chaplain; Bob Datin, Publicity Chairman; Frank Kruckeberg, Athletic Manager; Joe Beal, Baseball Manager.

Delta Pi Omricon announces the pledging this week of Charles Gleiser and Leon Rediske. First Degree initiation will be given next Wednesday night at the regular fraternity meeting.

Pentecostal, United Presbyterian, and the Christian Mission Alliance.

Those who professed no religious preference or did not answer numbered 56 students. Also the records revealed that for the past six years, there had been only a slight change in the percentage of the various religious affiliation of the students attending the College, although there were missing this year the Quaker, Church of England, Nazarene, Moravian and the Dutch Reformed, which have been present in former years.

Look to
RHODES
For a Complete College Wardrobe

Meet the Gang at
BURPEE'S
Sixth Avenue at Pine

For originality in your dance programs and invitations stop in at
PIONEER
Printers and Stationers
12th and A Streets
The postoffice is just across the street from us

Sororities Greet New Members

Various campus sororities welcomed new members to their organizations. Freshmen women entertained at the annual pledge banquets and informal pledging ceremonies.

Lakewood Community Center was the scene of the Alpha Beta Upsilon banquet last Saturday night, Miss Elizabeth Hardison was chairman for the affair.

Traditional sorority colors were used in the floral and table decorations.

Lambda Sigma Chi
Members of Lambda Sigma Chi welcomed their new members at dinner in the Junior Ballroom of the Winthrop hotel. The committee was composed of Miss Beverly Peters, chairman; Miss Margaret Sines, Miss Beulah Eskilesen, Miss Wilma Ittner and Miss Vivian Dignes.

Kappa Sigma Theta
Kappa Sigma Theta held their pledge banquet at Tacoma hotel last Saturday night. Miss Sally Jensen was chairman of the committee that arranged the dinner, and those assisting her were the Misses Doris Nisonger and Carol Pratsch.

Delta Alpha Gamma
The motif of the Delta Alpha Gamma banquet that was held in the Walker Apartments was in the sorority colors of rose and silver. The committee in charge of affairs were Misses Rosemary McElwain, chairman; Mary Jane Roberts, Pomona Hudson and Virginia Dougherty.

RIALTO
STARTING TODAY!
It's Double the Fun!
Double the Romance!
Double the Melody!
Bing Crosby
Martha Raye
Mary Carlisle
—in—
"Double or Nothing"
25c to 5 P. M. 35c Nites

Mannings
STORES SPECIALIZING IN COFFEE AND TEA
COFFEE TEA

The trend is to the
Peoples Store
for Candid College Clothes

Your Choice Absolutely Free
—a "Beanie"—"Roller" or "Campus Hat" with the purchase of Skirt or Jacket especially priced at—
\$2.95 each
all during this week. Assorted colors and sizes.
HELEN DAVIS
763 Broadway

Tolo Party To Be November 10

That the annual Tolo theater party will be held November 10 at the Rialto theater, was announced by Miss Billie Acton, chairman of the committee selected for the affair. The movie will be a musical and dramatic story, featuring Irene Dunne and Randolph Scott in "High, Wide and Handsome."

Both a queen and king of the Tolo will be chosen from the student body. Nominations will be made in student chapel next Thursday, the four persons receiving the highest number of nominations will be the candidates. Votes will cost one cent apiece and will be cast in boxes in the lower hall. The winning King and Queen will be presented from the stage of the Rialto theater on November 10.

The committee assisting Miss Acton are Misses Eunice Perkins, Ruth Jensen, Ruth Raymond, Joan Roberts, Izetta Hendricks.

ROXY
Starts Thursday
DEANNA DURBIN
in
"100 Men and A Girl"
with
Adolphe Menjou
Mischa Auer
—PLUS—
"Dance, Charlie, Dance"

MUSIC BOX
Starts Wednesday
Loretta Young
Warner Baxter
Virginia Bruce
in
"Wife, Doctor and Nurse"
—and—
"All Over Town"

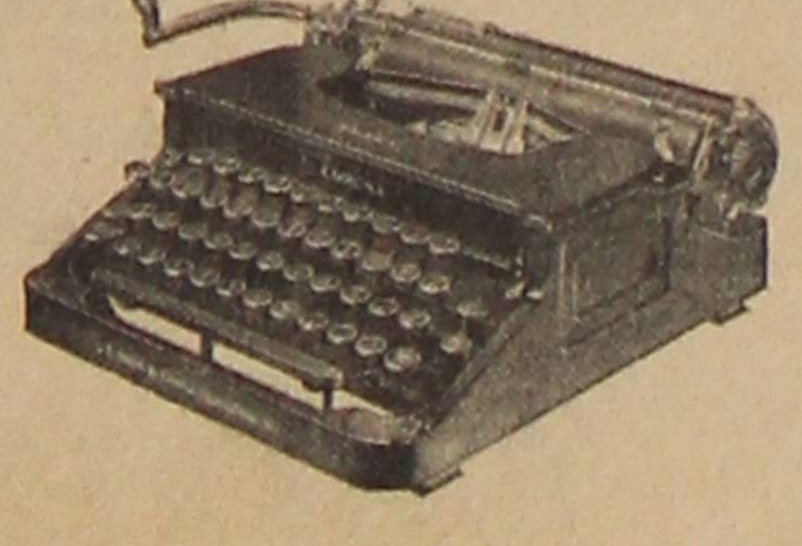
BEVERLY
Moved Over
Don Ameche
Loretta Young
in
"Love Under Fire"
—PLUS—
"The Frame Up"

RIVIERA
NOW!
Jack Holt
in
"Trouble In Morocco"
and
"TALENT SCOUT"

BLUE MOUSE
NOW!
Joe E. Brown
in
"Riding On Air"
and
"The Great Hospital Mystery"

TEMPLE
Starts THURSDAY!
WARNER BAXTER
WALLACE BEERY
in
"Slave Ship"
and
"BIG BUSINESS"

Typewrite
For Highest Grades in Less Time
All Makes From \$19.50
Terms \$1.00 a Week
Special Rental Rates
H. D. Baker & Co.
B Broadway 4062 109 South 10th



Albany College Next for Lumberjacks

CPS Gridders In League Tilt Next Thursday

Continuing their conquest for the Pacific Northwest conference title, Puget Sound's Maroon and White grid tornado will meet the world's most consistent losers, Albany College, Thursday night at 8 o'clock in the Tacoma Athletic park.

Although football followers would never seriously give Albany an outside chance of upsetting the Loggers, Coach Sandberg, nevertheless, can still remember the Pirates' surprising show of resistance in last year's contest. The Lumberjack eleven won that contest by a 3-touchdown margin, but the Orange and Black-clad gridders from McMinnville, Oregon, certainly were not disgraced.

The Albany record this year, as far as is known in Tacoma, consists of one-tie contest with the Southern Oregon Normal.

Back in fighting togs for the first time in several weeks will be Russ Perkins, the Loggers' regular signal caller, who has been absent from grid wars because of a foot injury for the past two weeks. Coach Roy Sandberg, however, may decide to protect Russ from possible further injury to his foot by saving him until the all-important battle with Willamette the following week.

The glaring weaknesses in the Logger performance on the grid-iron last Friday night—pass defense and tackling,—will receive the strict attentions of the team and "Sandy" during this week's practice. In every game played by the Maroon and White this season to date, these features of the Logger defense have stood out like a sore thumb, and the otherwise impressive showings made. The headman of the Logger grid tactics is determined once and for all to iron out the difficulties that nearly every member of the squad seems to have in these two departments this week.

"Sandy" expects to be able to use nearly the whole benchload of reserves in next Thursday's contest. Against College of Idaho, the subs had their big chance but Coach "Sandy" wasn't at all pleased with the way they performed as a team, although individually, several showed considerable promise. How much they have improved in two weeks will be seen Thursday night.

W. A. A. HOO By Ruth Jensen

The first inter-sorority sport of the fall season, tennis, started last Monday, Oct. 11, and will last until Oct. 29. This year a bracket tournament for singles and doubles will be played, with a singles No. 1 and No. 2 payer from each sorority and a doubles team from each competing. The winner in each tournament will receive 5 points and the runner-up, three points.

The managers from each sorority who met to determine the positions in the brackets were: Betas, Grace Howard; Gammmas, Pony Hudson; Independents, Doris McClymont; Lambdas, Lois Kuhl; Thetas, Helen Rosenzweig.

Freshmen, Sophomores and upper-classmen, numbering 1, 2, and 3, respectively, will start the hockey play-offs today. The games are scheduled as follows:

- Tues. Oct. 12—1-2.
- Wed. Oct. 13—1-3.
- Fri. Oct. 15—2-3.
- Mon. Oct. 18—1-3.
- Tues. Oct. 19—1-2.
- Wed. Oct. 20—2-3.

Professor Netters To Play Students

The long-heralded grudge match between the faculty "Racketeers" and the student net artists will definitely take place during the next three days. This announcement, following prolonged arrangement and postponement and much talk by both sides, was made by Manager Lou Grant, Monday.

Since the middle of August, the professors of "swing"—Seward, Hite, Tomlinson, Thomas and, later, Rugh—have been pointing toward a meet of this kind. Various non-official meets between these gentlemen and certain members of the student body have finally brought matters to a head, and the question of net supremacy on the campus will definitely be decided this week.

In the doubles pairings for the professors, O. F. Hite and R. Seward will oppose H. Hite and Bob Gibson in one contest; Don Kruzner and Brad Crowe are slated to defend the students' cause against Darrell Thomas and Prof. Rugh; and Professors Tomlinson and Brown will face Maynard Carlson and Eddie Kenrick.

The tentative singles drawings are:

- O. F. Hite vs. H. Hite.
- Seward vs. Gibson.
- Tomlinson vs. Carlson.
- Thomas vs. Crowe.
- Rugh vs. Kenrick.
- Brown vs. Kruzner.

SKI AWARDS

At Monday's chapel, medals were awarded to Don Kruzner, Gordon Tuell and Robert Kemp, who is now in Munich, Germany. This trio came in third in the Military Patrol race across the Cascades last spring.

After taking second place in a Coast meet at Mt. Tacoma held on Friday and Saturday, the trio pro-

ceeded to journey to Snoqualmie, where they credited themselves very favorably by winding up third in a field of five. The leading teams in the Northwest took part in this contest and much credit is due to the team from CPS which put up a great race despite lack of rest and other obstacles which presented themselves.

First and Ten

By Herbert Hite

At the annual conference meeting last spring, the circuit shakeup which had been rumored for many seasons took place, and Linfield dropped out of the seven-team league. At the time, many observers voiced the opinion that Linfield was losing all chance of holding her grid prestige by such a move. Where would Linfield find first rate competition in its class in the Northwest?

Now conference-followers are wondering if Linfield wasn't after all, making an intelligent move. As far as the conference title is concerned, there are just three teams in the league—Puget Sound, Willamette and Whitman. Year after year these three teams share most of the honors, and carry the other three teams along to make up the schedule. Is this after all better than being independent?

Willamette, seriously campaigning for national recognition as a football school, seems to have realized the folly of playing along with the College of Idaho and Albany. How much of an asset are these schools on a football schedule? Willamette this year meets only three conference schools—CPS, Whitman and Pacific. Take a look at the rest of the Willamette schedule—Portland U., Whittier, Fresno and Oregon U. Teams like that on a regular schedule would give CPS a standing and recognition that would certainly be an improvement over the class they are now in.

Football teams are judged by the company they keep.

There was a certain whisper going around we heard that Willamette was due to backslide after their remarkable record of last season. Saturday, in Portland, a lot of people changed their minds. Willamette walked all over one of the strongest independent teams in the Northwest—Portland U.

Willamette still has the services of one Richard Weisgerber, two-year all conference, little All-American, and the nation's second high scorer for 1936. So much is said about the talents of Mr. Weisgerber, that comparatively few fans are aware of a certain Billy Beard, also in the Bearcat backfield. Beard, last year, was second high-scorer in the league, and tied with Puget Sound's Alec Schwetz as the coaches' choice for All-Conference running halfback. A third all-conference man is Becken, guard, who has brought nothing but trouble to Willamette opponents for two years.

"Sandy" turned his bag of tricks upside down Friday night, and the Missionaries were taken to the cleaners like a dirty shirt on Monday. Not since the Loggers lost by a 14-6 score to the University of Washington in 1932, have they seemed so impressive. Everything that was attempted in the effort to move the pig-skin down the field, worked to near-perfection.

HONORABLE MENTION—

Bernie Remson: Played the best game of his career at CPS, offensively, at least.

Frank Sulenes: The major threat to the Whitman backfield.

Wayne Neely: Backed up the line like a brick wall.

"Pepper" Piper.

KENNEL-ELLIS

Artist Photographers

403 Roxy Theater Bldg.

MAin 7319

Special on Permanents

\$3.50 Value for \$1.95

Marcel and Hair Cuts

Free Finger Waves

La FRANCE

751 St. Helens

Everything You Want for Fall

FISHER'S
"Tacoma's Own Store"

LADIES' & MEN'S

SKI CLOTHING EQUIPMENT and SHOES RICHARDSON'S

SKI SHOP
928 Commerce

When You Want

The Best—

EAT AT THE

TABBY CAT

South Tacoma Way and M Street

Dine and Dance

After the Game . . .



Don's Pagoda

38th & So. Tacoma Way

COLLEGE COMMONS

MILK SHAKES . . . 10c

THIS WEEK SPECIAL Orange Pineapple and Peppermint Stick Shakes

— A Full Line of Ice Cream Candy Bars —

Open from 7 A.M. to 6:30 P.M.

Breakfast 7 to 9 A.M. Luncheon 11:30 to 1:30

SMITH'S PHOTOGRAPHS

PROVE that Quality in Portraiture is the most economical in the long run.

SMITH STUDIO

753 Broadway

BRoadway 1627

Visit Our New Studio
On Upper Broadway

KRUG

TACOMA

726 Broadway MAin 4493