

The Puget Sound Trail

VOL. 15, NO. 3

THE COLLEGE OF PUGET SOUND, TACOMA, WASHINGTON

OCTOBER 5, 1937

Greeks Pledge Fifty-Four Men

Formal Fraternity Rushing Is Climaxed Friday

Formal fraternity rushing reached its highest peak Friday with the pledging of Freshmen to the various campus organizations. Sigma Mu Chi pledged the highest number of men to their fraternity, including Wally Starkey, Bob Lloyd, George Mitchell, Roy Anderson, Richard Jarvis, Charles Fitch, Ray Grigal, Tom Ray, Don Rasmussen, Clifford Rawnley, John Sharp, Joe Price, Merritt Nelson, Bob Heaton, Jesse Denzler, Keith Keiffer, Jack Rickler, Dick Horr and Mark Lowell.

Sigma Zeta Epsilon

Sigma Zeta Epsilon were next in line, pledging the following: Wayne Neeley, Bill Madden, Duke Campbell, Art Freeman, Hugh McWhirter, Bill Steele, Albert Rooney, Leslie Dammon, Bob Brotherton, Frank Seabeck, Ed Tromley, Ward Allen and Jack Hungerford.

Delta Kappa Phi

New members of the Delta Kappa Phi pledge group include Louis Stewart, Tenny Keil, Simms Hicks, Leland Thune, Myles Barrett, Bob Pollock, Frank Norris, Stan Dahl.

Delta Pi Omicron

Pledges for the Delta Pi Omicron include: James Arnston, Robert Smith, George Hager, Jack Perry, Bernard Enright, Don Nolan, Charles Butts, Duane Beeler, Elroy Luiten, James Reno.

Alpha Chi Nu

Men who pledged Alpha Chi Nu include the following: Gles Conroy, Don Williams, Eugene Bennett and John Dreibilbus.

Largest Trail Staff

This year's Trail staff of twenty-five is the largest the school has had. Five of these are not working for credit.

We appreciate your mentioning the CPS Trail when you buy from local dealers. It helps our Alma Mater.

Antidote For Boredom Found In College Library

Flash!!! Latest antidote for that quiet evening at home can be found in the College of Puget Sound library, which is newly outfitted with twelve of the year's best sellers.

Topping the list is "And So Victoria," best seller by Vaughn Wilkins. According to Miss Doris Fickle, librarian, none could go wrong in choosing this for absorbing reading material.

In a lighter vein, there is "The Crime Wave At Blandings," by P. G. Wodehouse, and "Orchids On Your Budget," by Marjorie Hillis, author of the popular "Live Alone and Like It."

An autobiography by one of the world's most fascinating men, Noel Coward's "Present Indicative" offers an insight into the character of a genius.

"The Laurels Are Cut Down," by Archie Binns of Tacoma is of interest, also "Earthly Discourse," by Charles Erskine Scott Wood; "The Wind From the Mountains,"

New Office Hours

The bursar and the registrar announce a change made in the time schedule for their offices to be effective October 1. The new schedule is as follows:

9:30 A. M. 12:15 P. M.
2:00 P. M. 4:30 P. M.
Saturdays
9:00 A. M. 12:00 P. M.

Bag Rush Thursday

Armistice declared! The cessation of hostilities between the two warring factors, the freshmen and sophomores, has been in effect until today.

Thursday, chapel hour, on the athletic field will be the scene of the last big drive. Victory for the Freshman Class will mean the doffing of their caps. A sophomore triumph spells added hazing for the freshmen.

Big Week-End Celebration Due

From October 28 to October 30 Pop can act as kittenish as the Freshmen without losing too much dignity, for it's Homecoming Week. That it will be the best yet is the hope of John Clarke, general chairman of the affair.

The Freshman class, with Tom Ray as leader, will open the festivities with a bonfire Thursday evening before the play, "The Night of January 16." All decorations in the sorority rooms and fraternity houses must be up by 7 p. m. and remain up till midnight Saturday. The time of judging has not yet been announced.

With Klemme and his yell dukes leading, a noise parade will be held Friday noon as a prologue to the game to be played that night with Willamette University.

Fraternity and sorority banquets will be held Saturday. The alumnae banquet will also be held Saturday evening. A dance will climax the activities of the week. Maurita Shank has been appointed to head the dance committee. The place of the dance and the orchestra have not yet been decided. Other committee workers and chairmen will be announced this week.

AUTHOR



Christian Miller

CPS Registrar Sells Article

Based on figures taken from the records of the students at the College of Puget Sound, Registrar Christian Miller has written an article entitled "Ability Versus School Grades" which will appear in this month's issue of the Journal of American Association of Collegiate Registrars.

The article was a survey of the comparative grade standards of the students in the different departments. The article also compared the intelligence quotient rating of incoming freshman students with the student grades at the end of the season.

Shank Receives Block Print Award

Maurita Shank, senior, received a first award for her block print which was on display at the Western Washington Fair. Pauline Schow's, ex-'38, water color paintings were awarded several first prize ribbons at the same exhibit.

An art display by students of Professor Kohler will be held around the middle of October. At this time these prize winning objects of art and other creations by CPS artists will be on display in the gallery, on the fourth floor of Jones Hall.

Iceland Weaving Exhibited Here

Miss Blanche Stevens, head of the Home Economics department, in conjunction with the Tacoma Weavers' Guild, presented an unusual exhibit of Icelandic weavings last Thursday afternoon.

These characteristic weavings and handicrafts of Iceland were brought over from her native land by Miss Hallador Bjarnadotter, the national home demonstrator of Iceland, here on leave of absence.

The exhibit, which was open to the public from 3 to 5 o'clock, was attended by many home economics teachers of the public schools.

Miss Blanche Stevens is playing hostess to Miss Joey Workman, who is here on a visit from London, England.

Year-Book Editor Announces Staff

Ten Members Sign

Margaret Sines, editor of the 1938 Tamanawas, announces that the following people have signed up for work on the yearbook: Tenny Keil, Marcia Woods, Barbara Kane, Margaret Wilson, Eleanor Robison, Beulah Eskildsen, Jack Perry, Bob Price, Bob Myers, and Florence Ittner. Bids for the printing and studio pictures have been received. A meeting of the staff will be held at noon in Room 19, Wednesday.

Murder Mystery To Initiate Three-Day Homecoming Fete

Ayn Rand's "The Night of January 16th" To Be Given In Jones Hall Auditorium October 28

For the annual Homecoming play, Campus Playcrafters, under the direction of Martha Pearl Jones, head of the dramatic art department, will present on the evening of October 28 in Jones Hall auditorium, Ayn Rand's Broadway hit, "The Night of January 16th."

Scholarship Is Aim, According To Prof.

"High scholastic attainment is the desire of most College of Puget Sound students," declared Professor Tomlinson in Friday's chapel.

He based his statement on a recent questionnaire given to students of his classes. Prof. Tomlinson was speaking as a representative of the Mu Sigma Delta, scholastic organization.

The value of attaining a high scholastic record was emphasized by the fact that employers hiring people generally look at the record of their studies, not whether they made a touchdown at the crucial moment in a game, or belonged to the right fraternity or sorority.

122,000 Students Receive N Y Aid

Over 122,000 students from approximately 1,600 colleges, including CPS, are able to continue their higher education because of the aid of the National Youth Administration program, an agency created by the executive order of the President in 1935.

There are this year 82 students, a 25 per cent decrease from last year's total, helping the faculty, assisting in the library and in the churches, putting in a maximum of 30 hours per week, for which they receive an average of \$15 a month. The funds which the students receive are largely appropriated by the federal government, to which a small appropriation from the state government is added.

The N. Y. A. student is required to work the period of nine months per year, the first month ending October 9.

Band Will Play At Next Game

The CPS band will make its first appearance at the football game with Whitman at Athletic Park on Friday, October 8, Mr. Wersen, director, announced today.

The first rehearsal was held last week with a large number reporting as compared with initial enrollments of previous years, according to the leader. Many have signified their intention of playing for the games and Mr. Wersen urges others to enroll. The band meets regularly at 8 o'clock on Tuesdays and Thursdays, but extra rehearsals will be held to accommodate special members.

Board To Meet

That all members of the Central Board are requested to attend the next meeting, October 11, is the urgent request of Gordon Tuell, president.

The entire action of this melodrama takes place in a courtroom. The story is the trial of Karen Andre for the murder of Bjorn Faulkner, millionaire swindler and her ex-employer. Startling developments in the trial indicate that the murderer may have been the father of his wife, Nancy Lee Faulkner. The jury is chosen directly from the audience, occupying the stage throughout the play. So ingenious is the statement of the case, so cleverly is the play written that the issue is never decided until the jury renders its verdict. This verdict determines the ending of the play. Among the notables to serve on the jury during its eight months run on Broadway were Jack Dempsey, Ricardo Cortez, Babe Ruth and Helen Keller.

Leads in the local production are taken by Mildred Brown as Karen Andre, the accused ex-secretary. Norman Runions as the relentless district attorney; Maurita Shank, a newcomer to the CPS stage, as Nancy Lee Faulkner, the beautiful wife of the murdered man, and Gordon Tuell as the defense attorney.

Other parts were cast as follows:

- Judge Heath.....Gene Albertson
- Roberta Van Rensselaer.....
- Ray Norris
- John Graham Whitfield.....Judd Day
- Jane Chandler.....Jane Anderson
- Sigurd Junquist.....Robert Byrd
- Homer Van Fleet.....Roger Mastrude
- Dr. Kirkland.....James Arnston
- Magda Svenson.....
- Wesla Jane Whealdon
- Mrs. John Hutchins.....Ruth Reiser
- Prison Matron.....Virginia Smyth
- Bailiff.....Robert Sprenger
- Clerk of the Court.....Richard Sloat
- Elmer Sweeney.....Richard McKnight
- Secretaries.....
- Sally Jensen, June Peele
- Stenographer.....Belle Ruth Clayman
- Nick Regan.....Dewane Lamka

Jacobsen To Play

Professor Jacobsen will give his first out-of-town recital on Thursday, October 21, when he is scheduled to play for the Ladies' Music Club of Yakima, it is announced by the music department.

Freshmen To Be Accepted Friday

Dr. Todd To Officiate

The class of '41 will be formally accepted by the student body on Friday, October 8, officially designated as Matriculation Day, with Gordon Tuell, student body president, in charge.

Dr. Todd will address the students at chapel in the morning, with special music completing the chapel program. Immediately following chapel the traditional ceremony will be held at the color post behind Jones Hall.

The Puget Sound Trail

Member N. S. P. A.

Established September 25, 1922

Published Weekly During School Year

Official Publication of The Associated Students
COLLEGE OF PUGET SOUND

Entered as second-class matter at the Post Office at Tacoma, Washington, under the Act of Congress of March 3, 1879.

Subscription price, 75c per semester; \$1.00 per school year by mail.

Printed with Union Labor by the Honeywell Printing Company.

EDITORIAL STAFF

Editor-in-Chief	Ruth Leo
Associate Editor	Analie Duncan
Sports Editor	Herbert Hite
Society Editor	Marcie Woods
Features Editor	Wilma Ittner

Reporters will be chosen after a trial period of one month.

BUSINESS STAFF

Business Manager	Herbert Clarke
Assistant Business Manager	Paul Jueling
Advertising Manager	Dick Haley
Assistants	Betty and Letty Schaufelberger

Freshman View

With tests safely (or unsafely, as the case may be) over and classes begun in earnest, freshmen are finding time to draw a breath and survey their new surroundings. Popular opinion seems united in that CPS is tops. After struggling for two weeks in an effort to learn "Alma Mater," a genuine glow of pride and school spirit is beginning to suffuse even the most reticent of freshmen.

So this Class of 1941 has come to feel itself to be a part of this great and wonderful student body. All that remains is for said student body to wake up to the fact and extend a little of the sincere cooperation for which this noble institution is famed.

Here we are, a group of bewildered frosh, faced with a totally new environment and forced to make the best possible adjustment.

Men and women they call us. This must mean that we are on our own now.

Many and varied are the problems of the rushee. Thrown into a social whirl such as he has probably never seen before, he is at once on top of the world and lost in a fog. How to discriminate between the rival groups?

Each individual must figure out his own approach to this dilemma. But perhaps it would be well to repeat again that the best sorority or fraternity is the one in which you will be the happiest.

Again, 'All Hail to Alma Mater!'

Intercollegiate

You've got a certain something there,
That makes us men-folk sit and stare—
That flashing smile, those golden tresses,
And, oh, those sheer-cut, biased dresses.
You're just the type of specimen
Who brings out, more or less, in men
The tigerish impulse.
In short, you were the tops until,
My fragrant little daffodil,
I learned that though from head to foots
You're practically perfect, Toots,
Your hair is dark around the roots.
(Ah, disillusionment!)

—Daily Trojan

"I draw the line at kissing,"
She said in accents fine;
But he was a football hero
So he crossed the line.
Alabama Rammer-Jammer

The chief trouble with the straight and narrow path is there is no place to park your car.

Dizzy Theme:

Why are women anyway? Of all the botherly creatures that walk the face of the earth, girls take first place. In their very essence, what do they amount to? A bundle of fuzz, a scrap of cloth, a mouthful of teeth, a dash of spice. Why do we chase 'em?
Why are men anyhow? —Pacific Weekly

He didn't carve his career—he chiseled it. —Walter Winchell

A pedestrian is a man whose daughter is using the car for rushing!

Definitions:

Bridegroom: A bachelor who gives up good quarters to take on a better half.

Budget: A method of worrying before you spend instead of afterward.

Hug: A roundabout way of expressing affection.

Modern girl: A vision in the evening and a sight in the morning.

ALUMS—Why not get busy now and work to make the Golden Anniversary celebration of CPS next year the grandest event in its history? Just ask CPS officers how you can help.



INSIDE

OF THE

OUTSIDE

By Bob Price, Bob Gibson and Herb Clarke

After the first week we've decided that ability to write is the easiest part of a column . . . The prime essential is to be able to "Take It."

We were talking last week about school spirit . . . An innovation we would like to see inaugurated would be more spontaneous, informal, inexpensive get-togethers in the form of Friday matinee dances in the lower floor of Jones Hall. Open house in the sorority rooms and in the Trail office. Harry Coleman and his 'Round Towners might even be persuaded to swing it for us. Keating and his lettermen have taken a step in the right direction with the informal lettermen's dance after the game next Saturday night. The success of Bob Riggs' chamber music last Thursday in the commons during chapel period proved in part what we mean.

Pome Dedicated to the Frosh.

Sing a song of six pents
Hear the freshmen sigh,
They'll think their pents are full of ents
When paddles start to fly.

* Ed. note—These guys copped this from the Kilikilik.

We were wondering how Duke Campbell felt, sans riding pants and shoes, riding home from Brown's Point with a strange lady . . . Don't tell anyone, but Ruth Raymond returned these articles of clothing to Mrs. Campbell. . . . How did she get them ??? Price, Breen, Starkey and Prexy, also Ray, paid for the humiliation suffered by Dick Sloat on Saturday last by walking home shoeless from one-way rides in the country.

Dick Horr and Ralph Beach have found the theaters excellent places to "shoot quail."

One romance we'd like to see break up, just to give us a chance, is the current Hatch-Enright setup.

Herb Hite please note: Annabel Miller and Harry Coleman were seen Friday night on Broadway waiting to catch a glimpse of President Roosevelt . . . But all indications show that they were more interested in each other.

Bedtime Story: A roundhouse swing brought Paul Jueling out of a blissful slumber the other night . . . After planting a passionate kiss on brother Helmut's cheek he was rudely awakened to find that it was Mutt, not the glamorous Alice Faye, his dream girl.

Dry your tears Prof. Battin, there is still another week to receive a sorority bid.

We only heard but: How were the Thetas going to know Clare Hanson was a strapping six-footer and a gentleman ??? He replied to their rush date promptly by writing: "I'm sorry I won't be able to attend your tea. I have six cords of wood to pile this afternoon."

When asked by your inquiring reporters for the low-down on the Omicron house, Marc Miller, the sage of CPS, replied, "The only dirt in the Omicron house is under the beds."

In conclusion we wish to ask you two favors.
1. Support Trail advertisers so we'll have the means to print the column.
2. Don't do anything worth repeating unless one of us is around to get it straight.

Oh, yes. Did you know we have "fixed it up" so that we may use our A. S. C. P. S. cards for reduced rates at the Olympic Bowl when Maestro Paul Pendarvis leaves? You're welcome.

Now that rushing season is over the Freshmen, instead of being the salt of the earth will find they are being slightly peppered. Hackneyed, don't you think?

SAWDUST



By John Clarke

Joe Price is almost a deadringer for Jack Liek. Leo Magrini would look a lot like Groucho Marx if he didn't look so much like Ben Blue acts.

If Cliff Rawnsley would wear a pleated-back suit when he swings around the ivories in his unique piano playing we would have a visual picture of a noiseless accordeon in motion.

Katherine Yakamoto insulting Jane Anderson (all in the spirit of good clean fun, etc., of course) —Hugh Williamson in assembly without his beanie on his bean—Tom Ray finding himself with so many new friends since election.

Fershmen Hail From All Points

With representatives coming from one foreign country and nine different states, the freshman class this year is well represented geographically.

Oswald Lightfoot, the only student coming from another country, is a resident of Punahou, Honolulu.

From Chicago comes George Baxter; from Minneapolis, Robert Chapman. Olaf Emblem comes from Santa Fe, New Mexico; Peter Gugich from Oakland, California; Merritt Nelson from Des Moines, Iowa; Barbara and Wava Shelmdine from Spencer, Iowa; Edward Soulds, Helena, Montana; Arthur Van Walk, Brainerd, Wisconsin, and Mrs. Blanche Woodruff, Sidney, Ohio.

Four CPS Grads Become Coaches

Four CPS men from the class of '37 are now coaching in schools throughout the state. Included are Emery Piper, who is taking Mark Whitman's position at Kelso; Howard Haas, who is now head coach at Granger; Otto Smith, head coach at Oakville, and Jack Kimball, who has been placed at Kent.

Whitman, who will be remembered as a former record holder in the half mile, has secured a position at Clover Park.

Loggers Play On Turf Field

No longer must CPS gridders toil on the hard, rocky Stadium Bowl field. Because of the efforts of Coach Roy Sandberg, Athletic Park at South 15th and Sprague has been secured for the ensuing year.

Students, as well as team members, welcome the change to the park, with its advantage of central location.

Coach Lou Grant stated that the park' lighting system is considered "tops" on the Pacific Coast. Other advantages of the new location include a public address system, better parking facilities, and stands which are much closer to the playing field than those of Stadium Bowl.

The new park, which was remodeled for the Tacoma Tigers of the Western International Baseball league, was secured at considerably less than the cost of the Bowl.

CPS, however, is not the only team to avail itself of the better conditions to be found at Athletic Park. The coming grid season will find Alt Heidelberg and Pacific Lutheran College fighting out their grid wars on the new playing field.

BRoadway 4532

Expert Hair Cutting
Bleaching and Tinting

LaRae Beauty Salon

2708 Sixth Avenue

Natural and Duart
Permanent Wave

We Feature All
Beauty Lines

Daisy Tietje, Mgr.

We appreciate your mentioning the CPS Trail when you buy from local dealers. It helps our Alma Mater.

Look to

RHODES

For a Complete
College Wardrobe

Typewrite

For Hughes Grades in
Less Time

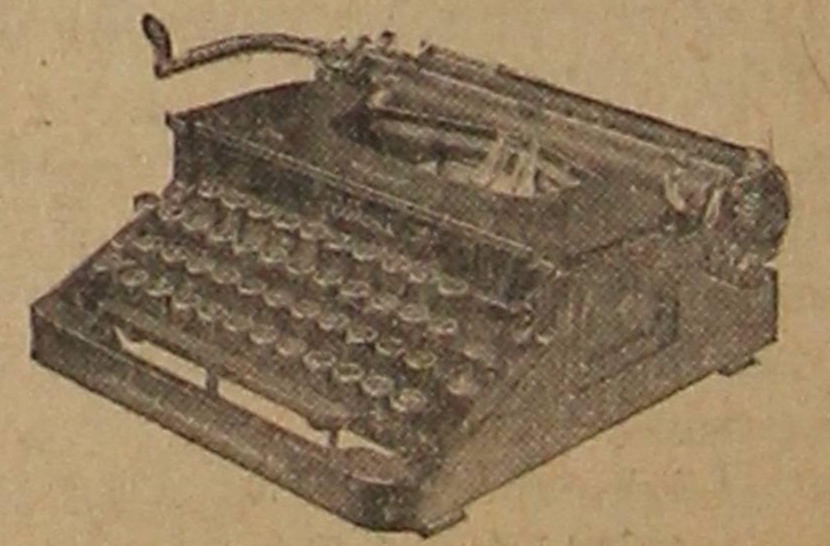
All Makes From \$19.50
Terms \$1.00 a Week

Special Rental Rates

H. D. Baker & Co.

BRoadway 4062

109 South 10th



Sororities, Fraternities, Clubs

Edited By Marcia Woods

Mothers' Clubs Make Fall Plans

With the beginning of the fall semester's social activities, the Mothers' Clubs of the various campus sororities are making plans for election of officers and for the welcoming of new pledge mothers.

Mrs. A. T. Magnusson was elected president of the Lambda Sigma Chi Mothers' Club at their first meeting of the year last Tuesday. Other officers selected are Mrs. C. A. Sines, re-elected vice-president; Mrs. Edwin Carlson, re-elected secretary; Mrs. C. O. Nelson, treasurer. Mrs. Sabin Swanson, past president, presided at the meeting which was held in the home of Mrs. Carlson on North Cushman street.

Plans were made for the traditional tea to welcome the mothers of the pledges of the sorority under the chairmanship of Mrs. Sines.

Book reviews by guest speakers are scheduled as an important part of the winter program. "How to Win Friends and Keep Them," written by Dale Carnegie, will be the first review given.

The Mothers' Club of Delta Alpha Gamma will hold its first meeting this afternoon in the home of Mrs. E. H. Butler on North 24th street. Assisting her in serving the dessert luncheon will be Mrs. Charles Westcott. Following will be a business meeting in which election of officers will be held.

Alpha Beta Upsilon Mothers' Club will gather in the campus sorority rooms for its first fall meeting which will be strictly business. Mrs. C. M. Shank is the newly-elected president of the Kappa Sigma Theta and is in charge of the club's fall plans.

Judd Day Is Elected Officer

Knights of the Log recently held election of officers to fill vacancies left by members not returning to school. The new cabinet now includes Bill Reynolds, vice-president; Judd Day, secretary-treasurer. Duties of the honorary sophomore men's organization will be to take charge of ushering at this fall's football games. The annual Soph-Freshman Bag-Rush to be held this Thursday will also be sponsored by the club. Brad Bannon and Russell Perkins are co-chairmen for the affair.

Members Hold Open Meeting

The CPS chapter of Kappa Phi, national sorority for Methodist girls, celebrated its 21st anniversary with an open meeting Monday evening, October 4, at 7:30 o'clock. All new Methodist girls and alumni were invited.

A brief review of the plans for the coming year was presented by a group of girls dressed in symbolic rainbow colors. The girls taking part were the Misses Massaye Jinguji, Mary McKenney, Fern Nash, Dorothy Padfield, Mary Keller, Edith Allen, Grace Howard, Jean Jespersen, and Kathryn Creesy.

Miss Ruth Wilson gave a talk on the history of the Kappa Phi chapter. A flute solo was given by Miss Jean Jespersen, accompanied by Miss Grace Howard. Devotions were led by Miss Jean Smith, who also played incidental music.

Refreshments, including a birthday cake, were served after the meeting.

Freshmen Elect Y. W. Officers

Miss Lettie Schaufelberger was elected president of the Freshman Y. W. C. A. at the meeting held Tuesday during Chapel period in the Y. W. room. Miss Muriel Jackson was elected vice-president, Miss Betty Schaufelberger, secretary, and Miss Virginia Krogh, treasurer.

The meeting was opened by Miss Barbara Beardsley, upper-class adviser, but as soon as she was elected Miss Schaufelberger took over the meeting. A few songs were sung after the election. A general meeting with the upper-class Y. W. group is planned for next Tuesday to hear Dr. Frank G. Williston.

At the meeting of the upper-class Y. W. Miss Margaret Heuston was elected chairman of the Y. W. bulletin board for the coming year. Girls signed up for individual interest groups, which will hold discussions through the coming year.

Officers of the upper-class Y. W. are: President, Miss Katherine Yamamoto; vice-president, Miss Izetta Hendricks; secretary, Miss Betty Bannister; treasurer, Miss Evelyn Shaw.

Heads of permanent committees are: Program Chairman, Miss Margaret Sines; World Affairs, Miss Virginia Smyth; Social Chairman, Miss Irma Juelling; Family Relations, Miss Sally Jensen; Co-chairman, Miss Mary Jane Roberts; Publicity, Miss June Peele, and Religion, Miss Mary Ann Hawthorne. Miss Barbara Beardsley is the Freshman Commission, or upper-class adviser for the Freshman group.

W. A. A. HOO By Ruth Jensen

This afternoon at 4:00 o'clock girls interested in hiking should meet on the steps of Jones Hall for the first hike of the season. There are six hikes scheduled for this fall. Participation in all six will give you 100 points toward a sweater, three will give you 50 points. It is a good way to meet a lively bunch of girls and have fun, too. See Doris McClymont for particulars. No hike if it rains.

As hockey season goes on its way we see some snappy new athletes in CPS girl's sports. Some of the up-and-coming freshman gals are Doris Hartman, Virginia Howell, Barbara Kane and Muriel Jackson.

Some of the stellar athletes back this year are "Pony" Hudson, Betty Worden, Doris McClymont, Helen "Rosie" Rosenzweig, Kay Sutherland and Lois Kuhl.

Homemakers' Briefs State College Extension Service

Two thousand miles is a common distance for fresh products to go to market in some of the nation's larger cities.

This year the forecast is for a bumper walnut crop, the largest almond crop since 1926, and a pecan crop above average.

A tablespoon of sal soda in a gallon of water makes a fair disinfectant with which to scrub the inside of a refrigerator once a week.

You'll Have
Barrels and Barrels
Of Fun If You'll
Roll Your Hoop
to the

XXX BARREL

For originality in your dance programs and invitations stop in at
PIONEER
Printers and Stationers
12th and A Streets
The postoffice is just across the street from us

LAKWOOD

Starting Friday
Barbara Stanwyck
Joel McCrea
—in—
"Banjo On My Knee"
—and—
Ed. Everett Horton
—in—
"Wild Money"

Eves. 6:45 Gen. Adm. 25c

RIALTO

HURRY! HURRY!
ONLY 3 DAYS LEFT
TO SEE

LOST HORIZON

Frank Capra's Masterpiece
Starring
RONALD COLMAN

25c to 5 P. M. 35c Nites

Pledge Banquets Being Planned

The members of Delta Alpha Gamma are giving their pledge banquet Saturday, October 9, at the Walker Apartments. The motif will be carried out in the sorority colors, rose and silver. The committee is composed of Misses Rose Mary McElwain, chairman; Mary Jane Roberts, Pomona Hudson and Virginia Dougherty.

The pledge banquet which will be given by the Alpha Beta Upsilon sorority will be held at the new Lakewood Community Center, October 9. Miss Elizabeth Hardison is chairman of the affair.

Lambda Sigma Chi has chosen the Junior Ballroom of the Hotel Winthrop as the scene for the informal pledging ceremony of their new members. The committee is composed of Misses Beverly Peters, chairman; Margaret Sines, Beulah Eskildsen, Wilma Ittner and Vivian Dignes.

The members of Kappa Sigma Theta are holding their pledge banquet at the Tacoma Hotel Saturday, October 9. Miss Sally Jensen is chairman of the affair. Miss Doris Nisonger and Miss Carol Pratsch are assisting her.

ROXY

Starts Thursday
Don Ameche
Loretta Young

—in—
"LOVE UNDER
FIRE"
—Plus—
Jane Withers
—in—
"Wild and Wooley"

MUSIC BOX

Starts Wednesday
DICK POWELL
FRED WARING
And His
Pennsylvanians

—in—
"Varsity Show"
—plus—
Bruce Cabot
—in—
"BAD GUY"

BEVERLY

Ends Tonight!
JACK OAKIE

—in—
"SUPER - SLEUTH"
—Plus—
"Woman in Distress"
First time in Tacoma

RIVIERA

NOW!
Buck Jones

—in—
"Smoke Tree Range"
—and—
"Public Wedding"

BLUE MOUSE

NOW!
MARX BROS.

—in—
"A NIGHT AT THE
OPERA"
—and—
"Trail of the Lonesome Pine"

TEMPLE

NOW!
WILL ROGERS

—in—
"DAVID HARUM"
—and—
"There Goes My
Girl"

ALMANAC



"Old men and far travelers may lie by authority."

- OCTOBER
- 1—Fort Cassimir, Delaware, surrendered to the English, 1664.
 - 2—Italian expeditionary forces invade Ethiopia, 1935.
 - 3—The evangelical alliance of the world met in New York City, 1873.
 - 4—Work begun on the construction of the Niagara Falls power plant, 1890.
 - 5—First flight across Pacific from Japan to Washington made by Pangborn and Herndon, 1931.
 - 6—The first group of German immigrants arrived at Philadelphia, 1683.
 - 7—N. Y. Anti-Stamp Act Congress met; nine colonies represented, 1765.

Midnight Blue Tuxedos
\$27.50
KLOPFENSTEIN'S
Hart, Schaffner & Marx
935—Bdwy.—937

KODAKS
Eastman Kodak Stores
910 Broadway MAIn 4810

SPUR DINNER
To fortify themselves for the rough initiation, Spurs will hold a dinner for the pledges in the home economics room, October 6, before the ceremony. The formal initiation will be on October 20.

Quality Knitting Company
MAKERS OF FINE SWEATERS
403 So. 11th and Market

Get Your Corsage for the
LETTERMAN'S DANCE
at
FARLEY'S
255 So. 11th MAIn 7113

HOSIERY SPECIAL
REGULAR \$1.00 FOR 69c
at
CHURCHILL'S CORSET SHOP
Carrying Lingerie
Blouses and Sweaters

Footwear for College Students and Faculty
Spellman's
BUSTER BROWN SHOE STORE
1122 Broadway

Meet the Gang at
BURPEE'S
Sixth Avenue at Pine

The trend is to the
Peoples Store
for candid college clothes

Copies of Drawings, Portraits, Water or Oil Colors
Successfully Reproduced
Photographically
Work Guaranteed
TURNER RICHARDS
724 Pacific BRdy. 4631

THE NEW IN POPULAR MUSIC OR RECORDS
35c
3 for \$1.00
Ted Brown Music Co.
1121-1123 Broadway

"Be Budget Wise and Budget With"
HELEN DAVIS
Smart Apparel for Misses and Women
763 Broadway

FISHER'S
"Tacoma's Own Store"
"Husky" Jackets
Zipper Front, All Wool
\$7.95

CPS To Play Crucial Game Friday Night

Whitman Eleven Boasts Power On Front Line

All-conference Gray and Cummings Bulwarks Of Forward Wall

Continuing their conquest for the Northwest Conference football championship, the College of Puget Sound Loggers will meet the Whitman Missionaries Friday night, October 8, at 8 o'clock in Athletic Park.

The Sandberg-coached team is being rated as the pre-game favorite because of its admirable showing in the two previous contests of the year, namely the Enumclaw Silver Barons and the College of Idaho Coyotes.

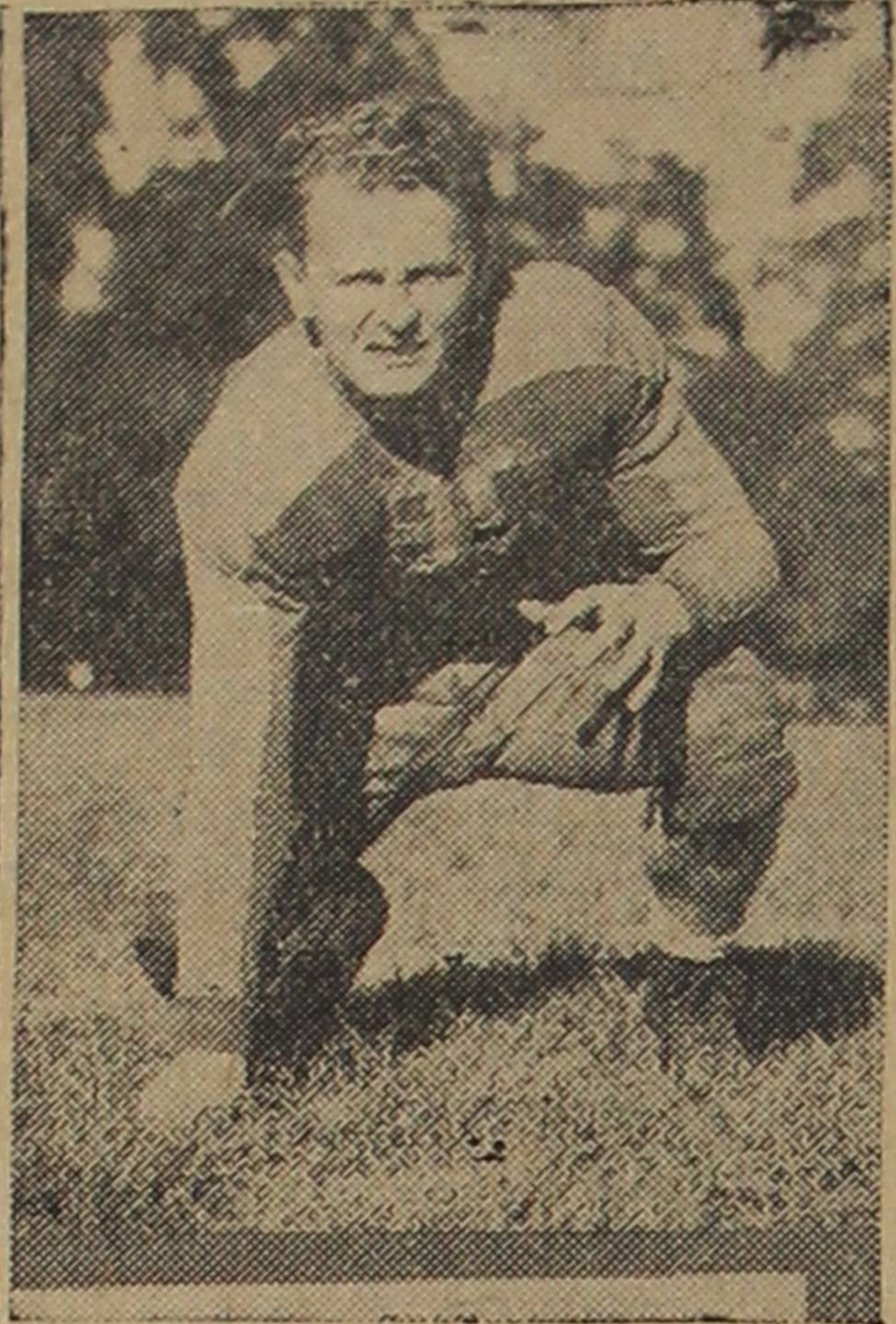
Whitman, on the other hand, was walloped by the Washington State Cougars in a practice session and was badly beaten by Montana State, 25-0. Results of the Whitman-Whitworth game of last week were not available at the time of writing, but forecasters on the game predicted a breather for the Walla Walla team as the Junior College from Spokane is reported as having a very weak line.

Coach Roy Sandberg has been spending the past week ironing out the rough spots that were apparent in the Enumclaw game, and by game time Friday night the Loggers should be a smooth fighting aggregation.

The Missionaries, who were spanked 6-0 last year on their home field on a long pass to McFadden, will be out to avenge the defeat with a hard-driving backfield composed of Sawyer, a three-year veteran, who has been switched to the fullback position from the line; Partch, an all-conference quarter; Johnson, a one-year veteran, at the right half post, and Martin, a plunging left-half, in his first year of competition.

With this backfield and a smooth working line, the Loggers should win by 13 points.

Watch These Missionaries Perform



Gray



Sawyer

Gridders Have Easy Evening

Maroon and White Does All Scoring In First Half

In a wild game held at Athletic park on Saturday, October 2, the Loggers of CPS defeated the College of Idaho 18 to 0.

The Logger first string made three touchdowns during the first half but failed to convert after any of the touchdowns. Logger reserves held the Coyotes in check during the second half although Idaho came close to scoring several times as the result of numerous passes and tricky formations.

The Loggers showed in this games that they can stand plenty of improvement and will undoubtedly get plenty of work in practice this week.

Several long runs were made by Schwetz and Remson of CPS and Fielder showed tremendous power in bucking the line but as a whole the Logger playing was only mediocre and plenty of work seems to be required to smooth over the rough spots.

Faculty Issues Net Challenge

Although several details are yet to be taken care of, plans for proposed tennis matches between the faculty and student players are well under way.

A picked team of faculty members will haul their tennis racquets out of the attic and attempt to ward off the vigorous attempts of their younger opponents. The faculty will probably be a little rusty and their joints may creak occasionally but they will have that great asset commonly called experience. Experience against fiery youth should result in a very interesting melee.

Interest in tennis is sadly lacking in our great Northwest. California, and even Oregon, are producing great players with alarming regularity while the tennis aspirants of Washington are content to play a soft game of ping pong on the tennis courts with the result that players from California and Oregon are very politely coming to our back yards and winning all of our tennis tournaments without any seemingly effort. True, we have plenty of rainy weather but there are many days during every month of the year in which tennis could be played.

The plan behind the faculty-student tennis matches is not only to promote more interest in tennis but in all other minor sports as well. Games between the faculty and students should help create interest which seems to be sadly lacking in minor sports in our college at the present time.

So far a date has not been set for the proposed faculty-student tennis matches but it is hoped by all interested that this affair will take place in the near future.

First and Ten

By Herbert Hite

The Maroon and White will be a top-notch ball club this year if two big "IFs" can be cleared up—IF reliable reserve strength can be developed from the raw recruits that warm the bench at the present time, and IF the combination that rates the limelight during actual combat picks up that extra split-second of speed that means the difference between a mediocre and a spectacular eleven.

Saturday night we watched the starting Puget Sound eleven roll over a weak College of Idaho squad like a steam roller over a basket of eggshells . . . That same night we watched the same weak College of Idaho squad run circles around a poorly-coordinated Maroon and White reserve machine . . . Which all goes to prove—That CPS, at present, is strong only so long as too many substitutions do not have to be made.

In the Enumclaw tilt, the Silver Baron safety man had enough time after catching a Logger punt to run on an average of 12 yards . . . The same thing happened to a smaller degree against C. of I. . . Remson, Schwetz and Fielder, when packing the pigskin, step out like wild men doing a Jesse Owens, but so far they don't get too far because they have to slow down to give the boys who do the dirty work in front of them time to get underway . . . "Sandy figures either some of his boys aren't very fast or else they just don't feel like running very fast most of the time . . . At any rate observers of this week's practices will see some fancy stepping when "Sandy" puts on a few sprint trials.

Headman "Sandy" finds that blocking and tackling, the ABC of pigskin-pushing, are still weak . . . Next weekend the Loggers will meet opposition that won't be exactly as simple as WPA when they tackle the Missionaries from foxy old Nig Borleske's camp in Walla Walla . . . If Puget Sound tackling is as inconsistent as it was against the Coyotes, maybe boys like Zerbtz and Sawyer won't stop at a mere 20-yard gain.

Logger blocking, Saturday night, opened holes you could lose the Grand Canyon in . . . But this observer has a sneaking suspicion that maybe the Idaho boys didn't quite know what to do when a tough-looking Maroon and White end threw a leg block on 'em.

HONORABLE MENTION

Gordon Fielder—looked like a ten-ton truck gone berserk on some of those pile-driving plays.

Don Wofford—showed the greatest improvement of any Logger player on the field.

Bob Brotherton—at times looked like the one utility man who knew the score, and incidentally the play.

Alex Schwetz—sure bet for more all-conference honors at present caliber.

Rediske—will be heard from as an aggressive end when he gets a little more experience.

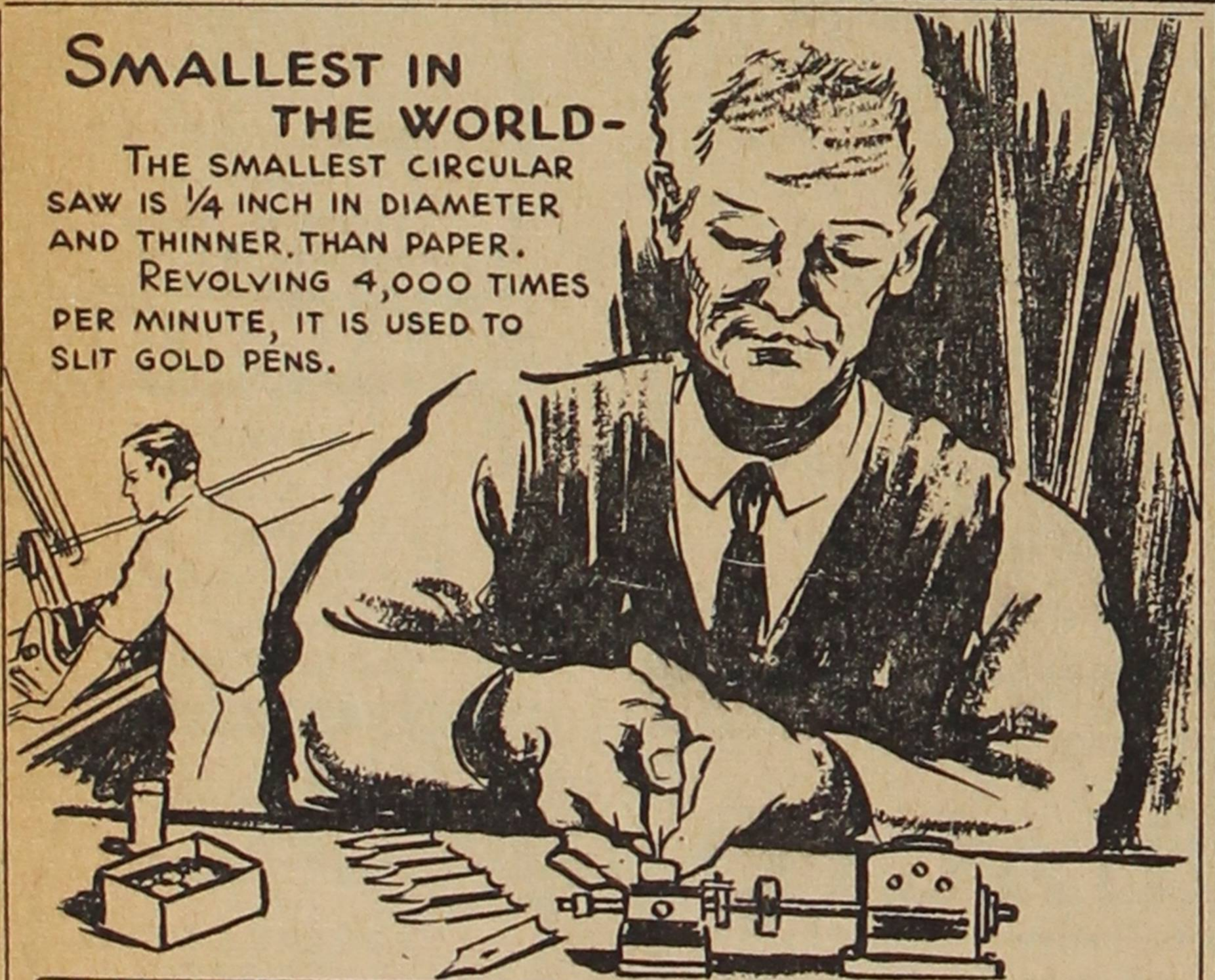
Against the College of Idaho Coyotes, the Lumberjacks were under the field generalship of Bill McLoughlin in Bill's first full game at the signal-calling berth . . . Each week "Sandy" appoints a team captain for the coming game . . . Against Nig Borleske's fighting Missionaries it will be Frank Sulenes . . . Last season Frank rated a position on the mythical all-conference second team.

AMAZE A MINUTE

SCIENTIFACTS BY ARNOLD

SMALLEST IN THE WORLD-

THE SMALLEST CIRCULAR SAW IS 1/4 INCH IN DIAMETER AND THINNER THAN PAPER. REVOLVING 4,000 TIMES PER MINUTE, IT IS USED TO SLIT GOLD PENS.



FLOWERS AND FRUIT—THE ORANGE IS THE ONLY TREE WHICH PRODUCES FRUIT AND FLOWERS AT THE SAME TIME.



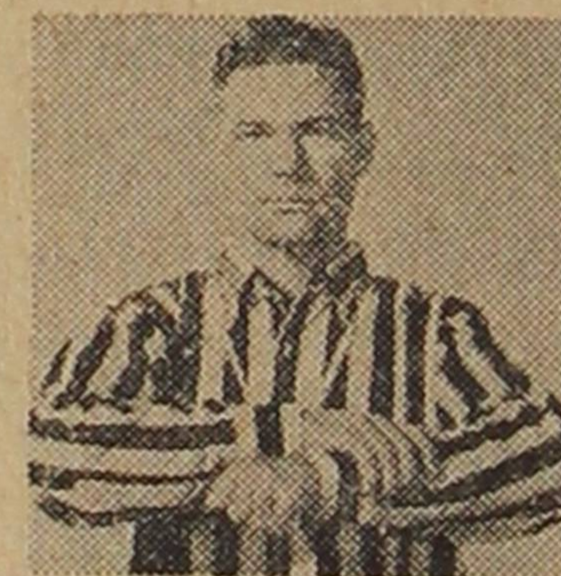
STRONG EGGS—AN EGG CAN WITHSTAND OVER 2 1/2 TONS OF EVENLY APPLIED PRESSURE WITHOUT BREAKING.



Learn to Buy Your Flowers at

Ander's

255 So. 11th MAin 7113



GRASPING OF WRIST. Holding. Penalty: Offensive—15 Yards. Defensive—5 Yards.

Get out your skis and look them over before the season starts

Also visit the ski shack and see the latest in ski-togs

Repairs and Rentals Roy Norman-Dept. Manager

Tacoma Marine Supply Co.

South 11th & A Streets

Expert Haircutting

ALDER STREET BARBER SHOP

North 26th and Alder



It's a Peach **SUNDAES** 15c in the **COMMONS**

Sprenger & Jones JEWELERS

College and Fraternity Pins a Specialty 114 Broadway BRdy. 4375 Tacoma