

fast pass-  
enburg nor-  
will invade  
ing Thurs-  
Logger var-  
ck. Earlier  
und downed  
a one point  
hoopers will  
e Thursday

Coach Roy  
start Erling  
Stoffel at  
berths with  
or Bruce  
the back-  
care of by  
e, although  
ing call at  
will be as-

name

ON  
915  
BOWEN

At  
dle

sel

NG

kt.

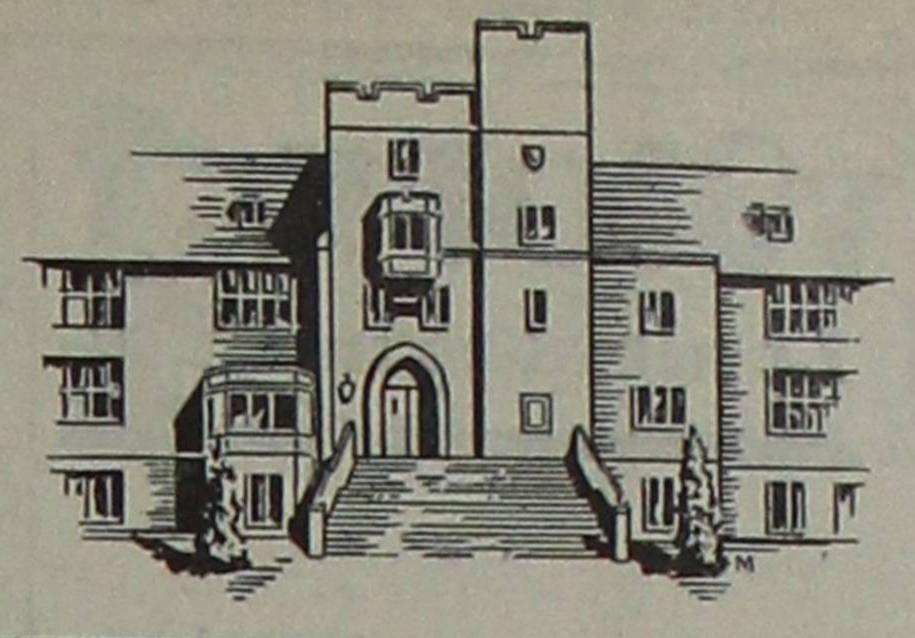
op.

TS

ips  
85

E

# The Puget Sound Trail



Vol. 13, No. 13

THE COLLEGE OF PUGET SOUND, TACOMA, WASHINGTON

FEBRUARY 10, 1936

## Olive Whorley, James Docherty Oratory Winners

### Second Places in Contest Awarded Helen Kojo and Jack Leik

James Docherty and Olive Whorley won first places in the men's and women's divisions respectively in the annual Burmeister Oratorical contest held last Thursday evening, Feb. 6 in the auditorium of Jones Hall. Docherty's topic was "The American Dream" and Miss Whorley spoke on "The Tragedy of Partisanship." Second places were won by Helen Kojo, who spoke on "The Challenge to American Citizenship," and Jack Leik, whose oration was entitled "An Unwanted Generation."

Prizes for the contest, submitted by A. O. Burmeister, local attorney, are \$10 and \$5 for first and second places in both the men's and women's divisions. Other contestants were Lora Bryning, Elizabeth Hardison, and Charles Zittel.

Miss Martha Pearl Jones was in charge of the contest. Judges were the Reverends Hegge, McGinnis, and Beach, Dr. Wm. H. Ludwig, Dix Rowland, Mr. Healy and Miss MacDonald. Franklin Larson was chairman of the event, Dorothy Belle Harris and Gladys Harding were hostesses, and Paul Gronemeier furnished pipe organ music.

## Students of Education To Teach In Schools

Each semester students in the department of education are given an opportunity to gain actual experience in educational work through practice teaching in the schools of the city. For the new semester, the appointments as announced by Dr. Samuel Weir, head of the education department of the College, are as follows:

At Jason Lee Intermediate, Jeanette Amidon will teach junior business training; Karl Decker, mathematics; Cliff Piercey, history; William Sherman, physical education; Fred Stockbridge, history; and Mrs. Ethel Westwood, foods.

At Mason Intermediate, Regina Carrier will do her practice teaching in the clothing classes; John Fadness in arithmetic; Ian Gordon in history; Mildred King in English; and Betty Smallridge in Latin.

John Bennett will teach history at Stewart Intermediate.

At Stadium High School Alice Grimes will teach algebra; Buena Maris, foods; Foster Teevan, German; and Orville Weeks, English literature.

Robert Brandt will teach English at Lincoln High School.

### Try An Ad

Have you lost anything you would like returned, or found something you wish to return? The TRAIL offers to help you free of charge. Just leave a note in the Trail office or with any member of the staff, and your ad will be run in the next issue. Take this opportunity to recover that lost book or pen.

## Charley's Aunt To Call at CPS Friday Night

### Popular Cast Will Give Pro- duction of Farce of Gay 90's

The third all-college play of the year, to be given in honor of the visiting high school debaters this Friday, brings the modernized version of the rollicking farce of the gay nineties, "Charley's Aunt." The play has been one of America's favorite comedies since its conception in 1892.

In the CPS production, directed by Martha Pearl Jones, parts are taken by many popular and well-known students, most of whom are new to the dramatic activities of the College. They include Ward Gilmore, Marc Miller, Billie Acton, John Clark, Pat Kelly, Betty Simpson, Virginia Smyth, Valen Honeywell, Jo Ann Grant, Kenny Allen, Eldon Anderson and Belle Ruth Clayman.

The production staff, headed by Franklin Larson, dramatics manager, includes Orville Weeks and Annie Laurie, student directors; Clayton Lupton and Dean Tuell, scenery designers; Dorothy Ann Simpson and Clarence Keating, property managers; Augusta Dickinson, costume manager; William Orr, electrician; Gladys Harding, prompter; Robert Brandt, ticket manager; Helen Rosenzweig and Kathryn Thomas, general assistants; Spurs as ushers.

## Bel Canto To Sing

The Bel Canto quartet, organized in the latter part of December, is preparing several specialty numbers to sing on the impending Choral Society trip. The quartet, under the direction of John Paul Bennett, will also sing on the program of the CPS alumnae banquet at Puyallup tonight. Members of the quartet are Paul Gronemeier, first tenor; Marvin Carter, second tenor; Wilton Vincent, baritone, and Richard Smith, bass. Mary Soransen is the accompanist.

## Faulk and Penberthy Enjoy Sunny California at Press Conference

by Ed Williams

Rusty Faulk and Larry Penberthy, editor and business manager, respectively, of the Puget Sound Trail, left by bus for southern California immediately after finals last week to be formally initiated into Alpha Phi Gamma, national honorary journalism society, at the conference held at the University of Redlands last Monday, Tuesday and Wednesday.

A letter, received Friday from Rusty, revealed that after initiation ceremonies, the 21 conferees spent much of the time in discussing ways and means to improve the various papers represented at the conference. The letter stressed the fact that Penberthy has come into possession of several new efficiency plans (heaven help us reporters!) Following the conference, Faulk discussed college publication methods and organization with student editors at several of the southern universities.

But the trip was not all for business purposes. Up to their usual tricks, Faulk and Penberthy spent

## Friday is Deadline For Senior Photos

Seniors! Tradition dictates 100% senior representation in the Tamanawas, so visit the Robert M. Smith Studio before February 14th, avoid the last-minute rush, have your picture taken now! Underclassmen, the Tamanawas is exchanged with all the important colleges and universities in the United States, take this opportunity to become nationally known. You have until March 30th to have your pictures taken.

In the 1936 Tamanawas there will be ample room for fraternity and sorority photographs. Space for a picture of each member as well as group scenes are provided for in the two pages devoted to each organization. Gerald Freeman, editor, offers amateur camera snappers complete secrecy concerning any personal pictures of their friends they wish published.

## Alumni Fund Campaign To Begin February 18

The Alumni Loyalty Share Fund campaign will get under way with a send-off dinner to be held February 18. The drive, under the direction of Franklin Johnson, Alumni Association treasurer, will be conducted by several teams each headed by a captain. It is planned to carry on the campaign for about three weeks and to conclude it with another dinner at which the results will be announced.

The 50 workers who have volunteered their services expect to interview, by phone or in person, every available alumni member. At least 500 alumni members are to be contacted. The purpose of the drive is to raise money to support the publication of the Alumni Association; to finance the other activities of the Alumni Association; and to aid the finances of the school generally.

## Third Annual High School Forensic Meet at CPS Friday and Saturday

### Thirty Washington Teams Expected to Compete in Debate And Extempore Divisions

#### FRIDAY, FEBRUARY 14

- 9:50-10:10 General Assembly, Auditorium, Jones Hall.
- 10:20-11:20 First round debate.
- 11:30-12:30 Second round debate.
- 12:30-1:30 Lunch.
- 1:40-2:40 Third round debate.
- 2:50-3:50 Fourth round debate.
- 4:00 Draw for extempore topic, Room 203.
- 5:00-6:00 Informal banquet, College Commons, 35c each.
- 6:30-7:30 Extempore preliminaries.
- 8:00-10:00 Play "Charley's Aunt" presented by Campus Playcrafters in honor of tournament contestants.

#### SATURDAY, FEBRUARY 15

- 9:15-10:15 Fifth round debate.
- 10:25-11:25 Sixth round debate.
- 11:30-12:30 Lunch.
- 12:30-1:30 Debate quarter finals.
- 1:40-2:40 Debate semi-finals.
- 2:50-3:50 Debate finals.
- 3:50-4:50 Draw for extempore topic.
- 4:50-5:50 Extempore finals.
- 6:00 Awards.
- 6:30-7:00 Broadcast of winning debate teams and winner of extempore over KVI.

The third annual high school debate tournament with Bill Bannister as director will be held on the CPS campus this Friday and Saturday, February 14 and 15 with approximately 30 teams expected from all parts of Washington. From the north will be Anacortes, from the south, Kelso, from the east, Yakima, Wapato, and Toppenish, and from the west, Bremerton. Other schools entered will be Stadium and Lincoln of Tacoma, Kapowsin, Eatonville, Buckley, Fife, Gig Harbor, Olympia, Kirkland, Acosta, Puyallup, Highline, Issaquah and Wenatchee. A new system will be used whereby each team entered will be numbered and the name of the school withheld. This will prevent certain controversy which might arise when a small school meets a team from a large school.

Judges for the debates will include Professors Walter Davis, Ellery Capen, George Henry, O. Floyd Hite, Frederick McMillin, Kenneth Hindley, Jeanette Amidon and Charles T. Battin, Doctors John Regester, Marvin Schafer, Warren Tomlinson, Samuel Weir, Frank G. Williston, Edgar Wheeler, C. O. Chapman. Debaters judging are Lora Bryning, Olive Whorley, Robert Byrd, Jack Leik, Charles Zittel, Arthur Linn, Grace Trompen, Maurine Henderson, Katherine McConron, David Alling, Elizabeth Hardison, Myrtle Foss, Ida Larson, Franklin Larson, Clarence Keating, Dorothy Gross, Sara Louise Doub, Margaret-jo Conry, Bruce Hetrick, and Stanley Nash.

Assisting Bill Bannister are Robert Byrd and Maurine Henderson in charge of housing the men and women, Lora Bryning as chairman of reception, Olive Whorley, correspondence and banquet; Grace Trompen, extempore topics; Elizabeth Hardison, chairmen, and Ora Willmott, judges.

## Winning Speeches To Be Broadcast

For the first time at CPS the winning teams in the high school debate tournament and the winner of the extemporaneous speaking contest, to be held February 14 and 15, will be presented in a radio broadcast within two hours after the conclusion of the meet. The program is to be given over station KVI on Saturday, February 15, from 6:30-7:00 p. m.

Professor Charles T. Battin, of the CPS forensic department and host for the annual tournament, announces that the two debate teams which go into the finals of the elimination will present a condensed version of their winning arguments. Instead of the regular procedure, one speaker from each team will offer a six-minute constructive speech, while the second member will be heard in a four-minute rebuttal. The high school debate question this year is: "Resolved, that the several states should enact legislation providing for a system of complete medical service, available to all citizens at public expense."

The winner of the extemporaneous speaking division will be given four minutes for his speech. It will be on one of the two subjects chosen for the competition: "The American Stage" or "The Processing Tax and Agricultural Relief."

First and second place winners in both the debate and speech competition will be presented with silver loving cups to take back to their schools as symbols of the victory.

CPS will this year, through KVI, make it possible for all schools entered in the tournament to know the results of the competition as soon as they are released.

## INR Group Holds Open Forum on Neutrality

A group of students of the CPS International Relations club presented a symposium on American neutrality on the open forum on KMO Monday, February 3. They were Leslie Cunningham, Frank Guhr, Robert Byrd and Maurine Henderson. Robert Byrd, vice-president of the club, is in charge of a series of broadcasts to be sponsored by the club.

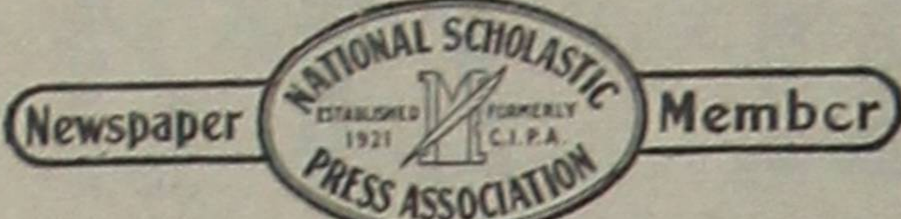
Mrs. Simmons, Tacoma teacher, who has been to China recently, will speak to the International Relations club at their first meeting of the semester at the home of Dr. and Mrs. Frank G. Williston, 3009 No. 16th.

## Free Theatre Tickets

Somewhere in this week's TRAIL are several lines of scrambled type. If you can unscramble them to spell your name, you will receive two tickets to either the Roxy, Blue Mouse, or Music Box Theatres. Call at the Trail office as soon as you find your name.



# The Puget Sound Trail



1935 Member 1936  
**Associated Collegiate Press**  
 Established Sept. 25, 1922 Published Weekly During School Year  
**Official Publication of The Associated Students**  
**COLLEGE OF PUGET SOUND**

Printed by Johnson-Cox Company, 726 Pacific Ave.  
 Entered as second-class matter at the Post Office at Tacoma, Washington, under the Act of Congress of March 3, 1879.  
 Subscription price, 75c per semester; \$1.00 per school year by mail.

### EDITORIAL STAFF

**EDITOR** - CARL FAULK  
**News Editor** - Maurine Henderson  
**Copy Editor** - Ruth Leo  
**Sports Editor** - Jack Burns  
**Society Editor** - Phyllis Swanson  
**Faculty Adviser** - K. M. Hindley  
**Feature Editor** - Louis Magrini

### Assistants

Maudie Boswell '38, Valen Honeywell '38, Betty Kuhl '38, Analle Duncan '39, Marjorie Ranck '38, Katherine Saunders '38, John Fowler '39, Ed Williams '39, Margaret Sines '38, Barbara Bryan '39, Mary Gail Harvey '39, Venetia Schultz '39, Art Peterson '39, Shirley Foote '39, Ruth Reinsner '39, Carolyn Geddes '39, Elinor Kallisch '39, Francis Galbraith '39, William Conser '39, Carl Kuhl '37, Carl Lindgren '38, Fern Nash '39, Mae Morrison '38, Clarke Oberlies '39, John Ashbaugh '39, Kenneth Allan '39, Bill James '36, JoAnn Grant '38, Al Turril '38, Elizabeth Hardison '39.

### BUSINESS STAFF

**BUSINESS MANAGER** - LARRY PENBERTHY  
**Advertising Manager** - Gordon Lake  
**Circulation Manager** - William Chisholm

### Assistants

Louise Boyd, Harry Coleman, Evelyn Crisp, Corabelle Griffen, Cameron McKinnon, Leon Wheeler.

### CPS SPOILS SYSTEM

A student editorial appearing this week brings to the attention of the College the popular spring subject of college politics. The broadminded, democratic sentiment of this letter undoubtedly represents the feeling of many students. On the other hand there are students who have built their fences of group loyalty—whether to organized group or to independent group—so high that they cannot see over them to the ultimate goal of the finest attainable student leadership.

One is called idealistic and impractical who dares to suppose it is possible to defeat a spoils system which divides up the booty afforded by a student body slate. Those same people are the standpatters who would say that war is inevitable, that social injustice is irreparable and that "You can't change human nature."

College is not a preparation for life, it is life. It is a first-hand opportunity for students to practice what they preach about the evils of the adult-formed world around them. Instead, we use it for a place to mark time in our active careers. While we are in college, we adopt the essentials of the very systems we condemn. We adopt the petty bargaining, the group intolerance, the fight for prestige which we as youth condemn in the world we see around us. It isn't logical. It is not striving for the harder and higher path. It isn't taking advantage of our opportunity to build a new world with the tools we have at hand.

Why not start the fight for a change in the world by eliminating the undemocratic political device which is one of the College's unnecessary traditions—the fraternity bloc?  
 —M. H.

### THE ANNUAL DOPE

It has been suggested that instead of putting out an annual which costs each student \$1.25 plus \$1.50 if he has his picture taken, and which represents only about one-fifth of the student body, we issue a 25- or 30-page supplement to the Trail which would cost each student approximately 25 cents plus 25 cents if he had his picture taken, and which would represent the whole student body. Larger and better financed colleges than CPS have made this innovation to the satisfaction of all concerned. We do not mean to infer that an annual is undesirable, but when it becomes necessarily limited and inadequate, perhaps a change is advisable.  
 —R. L.

**EFFECTIVE PRINTING**  
 Planned and Produced  
**JOHNSON-COX COMPANY**  
 726 Pacific Ave. BRoadway 2238

# Observatory Hill

By Louie Magrini

Puget Sound Revue

### Things I'd like to See Happen Before June Comes . . .

. . . a talk in chapel by Prof. Louis Grant. The chapel committee should try to help Prof. Grant overcome his bashfulness and arrange a date for him. I'm sure he would deliver a breath-taking oration—he has that rare platform personality so often lacking in modern gentlemen.

. . . a finding of the missing MuChi joss. MuChi president Dick Rich has openly accused the Sigma Zetes of stealing the joss from the MuChi frat house. The quicker it's found the better—because friendliness between CPS organizations must prevail at all times (that is, if Puget Sound ever hopes to become something MORE than just another college.)

. . . a "smoker" added to the list of sports already in the intramural competition. Boxing and wrestling programs would be lively additions to our campus and I'm sure the fraternities would have no trouble finding boxers and "rasslers" among themselves.

. . . a paved road replacing the present one from the entrance of CPS on 15th street to the parking places on the side of Science Hall. All students who ride to school use that road—THAT makes it worth paving. A person can't come to school now without knocking the springs off his car. Two weeks ago, a visitor to the college lost his teeth, cracked his glass eye and broke his suspenders riding over the CPS little "grand canyon."

. . . a social get-together where students can all go to the one place at the same time and have a big-time collegiate party. A matinee dance in the gym every Friday afternoon has been suggested by yellduke Ward Gilmore.

. . . another freshman play with exactly the same cast as that wedding success. Incidentally, I wonder why dramatic departments never attempt court-room plays?

**College Rythm . . .** Because of last semester's grades, John Ashbaugh vows to go on no dates this semester. "Except, of course," he QUICKLY adds, "when a girl asks ME for a date. Like the Tolo party, for example!" Tsk! Tsk! How some boys figure . . . Something MUST have gone wrong here. A few nights ago the Omicrons gave a dance and Bob Wilbur sent Shirley Foote a corsage—BUT to the dancing party went Shirley and the corsage with George Fisher . . . Bill Bannister, Dave Alling, Gordon Lake and Driver Peacock un-knotted themselves after final exams by driving to California. They made the round trip in approximately 3 days!

**CPS Short Story . . .** Alpha Chi Nus were having their regular Wednesday nite meeting with the election of officers. Down in the basement, the pledges were having their regular Wednesday nite session too. But when pledges meet they do more than elect officers. These pledges found two rubber tires, stuck 'em in the furnace, and "smoked" everybody out of the house!

**A Reporter's Notebook . . .** People with a distinctive walk: Marjorie McGilvrey . . . Add Similes: Girls are like newspapers—you can't believe everything they say . . . A very genial person: Tommy Bell . . . The column called "The Beach-Comber" on the editorial page of the Tacoma Daily Ledger is just about the crummiest collection of JUNK to be found anywhere . . . An ice cream cone to Jane Gebert and her staff for a very delightful college party. The comic valentines by Clayton Lupton were of the finest especially the ones of Librarian Warren Perry and Chuck Zittel but Ruth DeSpain, I'm GLARING at you—why draw a comic valentine of me?—I don't deserve all that publicity—why don't you publicize some of those CPS clowns who do nothing but try to crash into the campus spot-light?

**The Last Round-Up . . .** The next time Art Linn calls KVI to get even with someone he'd better make sure he's talking to the right party. Art telephoned Maurie Webster and bawled him out with words unfit to print here and demanded that he present himself at a certain street corner so that Art could knock his block off. Anticipating the purpose of the phone call, playful Webster connected Mr. Linn with the desk sergeant at police headquarters. Luckily for Art Linn, the policeman laughed it off—he thought it was some drunk acting up! . . . Kappa Sigma Theta gets an ice cream cone for giving us something NEW in Thursday assemblies. Jane Anderson with the red lamp she picked up from a city street repair job was terrific as the light-house hill-billy!

TELEPHONE MAIN 7745  
**The Lynn Mortuary**  
 "Superior Funeral Service"  
 717-719 TACOMA AVE.  
 TACOMA, WASH.

### Club Notes

For a Tamanawas picture of the group during a meeting, the CPS Writers' club will meet Monday evening, February 17. In accordance with a new policy started in the club this semester, no business except that of unusual importance will be brought up during the meetings, so the program of that evening will be the reading and discussion of manuscripts of club members.

During the last meeting, three manuscripts "Feet of Gold" by Maurine Henderson, "The Professor's Glasses" by Herbert Arnston, and "Crying Like a Baby" by Jean Sandlin were read. Orville Weeks and Fred Lane acted as high critics of the evening, the club's "Devil's Agents."

In connection with the coming Frank S. Baker short story contest of this spring, competition in poetry-writing has been suggested. The contest will be school wide.

Plans were made for an initiation banquet to be held Friday, February 21, when Chi Pi Sigma, national chemistry honorary, held its first meeting of the new semester last Wednesday in Howarth hall. They also arranged for sending a delegation to the national convention of the fraternity in Berkeley during the spring vacation.

It voted that the chapter purchase a scholarship plaque upon which could be engraved the name of the chemistry major of each graduating class who has had the highest average in chemistry throughout his or her college years.

Membership pins were presented to Albert Cozza, Karl Decker, Jack Green, William Rave, Howard Richardson, Robert Trimble, Stors Waterman, and Leon Wheeler. John Beach was accepted as a pledge.

### Student Groups Sell Rialto Theatre Tickets

Rialto theater tickets are being sold here in competition among the different groups of CPS students, with the admission price set at 35 cents, plus tax, but with ten cents from each sale going to the Women's Federation. Margery Ranck, chairman for the February sale, urges student cooperation in buying the tickets, which are good for admittance at any time.

**Fancy Foods and Fountain Lunches**  
**Brown & Haley Candies**  
**Webber's**  
 26th Near Proctor

**ALDER STREET BARBER**  
 EXPERT HAIRCUTTING  
 Corner No. 26th & Alder Paul Bullis, Prop.

**JOB PRINTING**  
**LANGLOW & FERGUSON**  
 766 Commerce Winthrop Hotel Bldg. MA. 1066

### Student Editorial

Dear Editor:

I am speaking from a general opinion of many members of the student body. It is concerned with the election of the Associated Student Body officers during the month of March. It seems impossible that in a college where a democratic spirit exists in so many activities that representative offices for students must be parcelled out to organizations only to satisfy organizational prestige.

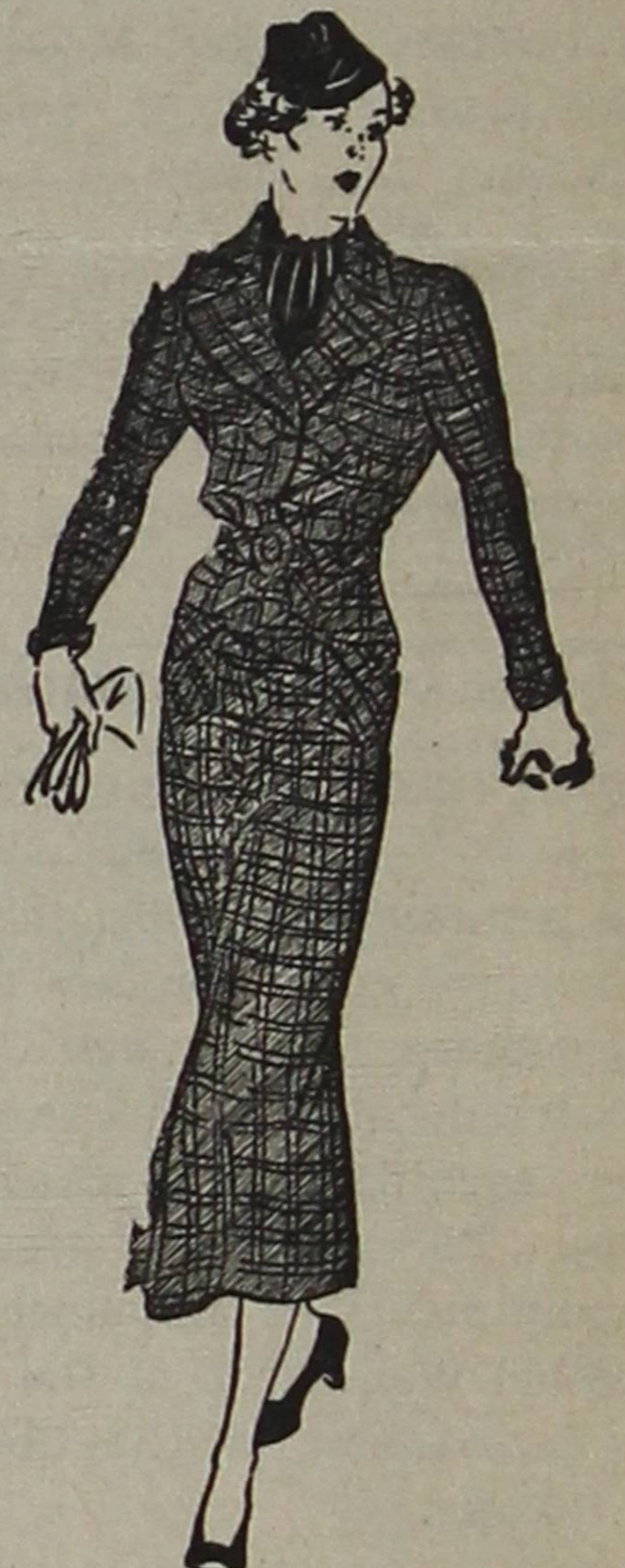
There was a time when students representing their respective groups met together to make a list of candidates for specific offices. When there was but one person so outstandingly qualified to fill an office, his merit was recognized. But such cases are few, the ordinary case being that there are several suitable candidates equally capable of filling the office. Then it is that the "bloc" decides which candidate will fill the office, according to the proportion of offices that each organization is allowed.

Under this system it is not a question of the best man representing the student body as a whole, but of any person placed in office to gratify organizational greed.

It depends upon the student body to carry on the spirit of democracy in choosing the student leaders—what can we do?

—Dorothy Belle Harriss

### Have That Wool Dress Cleaned Today THE NEW ERA WAY



Pickup, Cleaning and delivery all the same day

**New Era CLEANERS**  
 2702 No. Proctor PR. 1102  
 SMARTHEATOKHNIE



# SOCIETY

Edited by Phyllis Swanson

## Spring Rush Teas to Be Given By Sororites Here Today and Tomorrow

All Women Newly Enrolled at the College Are Invited to Attend These Affairs; Varied Motifs Featured

The spring rush teas of the social sororities of CPS will be held on the campus today and tomorrow, February 10 and 11. All women newly enrolled in the college are cordially invited to attend these informal teas. On Monday, Alpha Beta Upsilon will be hostesses from 3:00 to 3:45 and Delta Alpha Gamma will entertain from 4:00 to 4:45. On Tuesday, Lambda Sigma Chi will entertain first hour and Kappa Sigma Theta second.

### Miss Carrier, Chairman

Delta Alpha Gamma will also use a Valentine motif when they entertain. Miss Regina Carrier is chairman of the event, assisted by Miss Shirley Foote and Miss Margaret Munch. Attractive red and white favors will be given each guest. Miss Mary Jane Finke will sing solos and Walter Boswell will tap dance, both accompanied at the piano by Miss Marjorie McGilvrey. Miss Linda VanNorden and Mrs. E. H. Butler will pour and the table will be decorated with red and white carnations.

### Use Valentine Motif

Alpha Beta Upsilon with Miss Ruth McGeehan in charge, assisted by Miss Elsie Taylor and Miss Katherine McConron, will use a Valentine motif with heart-shaped favors. The program will consist of piano selections by Miss Mabel Wittren, a musical reading by Miss Elizabeth Hardison and vocal selections by Miss Maxine Baichley accompanied by Miss McGeehan. Miss Esther Stuft, president of the group and Miss Wittren will pour.

### Kappa Sigma Theta Announces Pledging

Kappa Sigma Theta announces the pledging of Mrs. Buena Maris.

### Alpha Chi Nu Announces Pledging

Alpha Chi Nu announces the pledging of Jack Faylor.

### Chairmen to Meet

An important meeting of all students who are assisting as chairmen in the high school tournament will be held in Room 204 at noon on Thursday, February 13. This will be a short meeting and all are urged to attend.

The Evening Is Yet a Puppy



go to  
**SCOTT'S**  
North 1st & Tacoma Ave.

KDCRANNEYELMACL

Late?



Meals Are Served Any Time of Day at the  
**College Commons**

### Feature Patriotic Motif

In keeping with the time, Lambda Sigma Chi will use a "patriotic" motif for their tea on Tuesday featuring decorations and favors in red, white and blue. Miss Barbara Beardsley will be in charge assisted by Miss Mary Louise Felzer, Miss Clara Oliver and Miss Helen C. Williams. The favors are being kept a surprise for the rushees. Special guests will be Miss Doris Fickel and Miss Helen Pangborn.

### "Winter Wonderland" Idea

Carrying out the popular winter sports of the season, the Kappa Sigma Theta rush tea will be a "Winter Wonderland" idea. The table will be attractive in white with carnations and snow surrounding a frozen pond upon which figures will be sking and skating. In keeping with the motif, the favors will be small figures on skis. During the tea hour, Miss Margaret Heuston will play piano selections. Assisting Miss Kay Fogg with the arrangements are Miss Evelyn Hopkins and Miss Barbara Bryan.

## Men Hold Formal Installation of Spring Officers

Formal installation of officers was held at the Delta Pi Omicron meeting Wednesday evening, with president Howard Hass presiding. New officers installed were John Clarke, president; Marc Miller, vice president; Bob Trimble, secretary; Rodney Lytle, treasurer and house manager; Doug Shurtleff, chaplain, and Henry Graham, historian.

John Clarke appointed the following members to serve on committees: Carl McConnell, Jack Ahrens, Harold Johnson, Howard Annis, Bob Farley, Ed Trimble, George Fisher, Jack Enright, Jack Reese, Howard Hass and Al Turril.

### Delta Kappa Phi

Delta Kapps are making plans for a potluck dinner scheduled for the next meeting and a mountain party to take place in two weeks. Following the regular business meeting, formal pledging was held for Ash Walker and James Docherty. Alumni announced plans for a dance to be given soon.

### Alpha Chi Nu

February 26 and 28 have been set aside by Chi Nus as dates for rough and formal initiation, respectively. Members appointed to make arrangements are Francis Guhr, Amos Reed, Valen Honeywell and Bruce Hetrick. Mr. Battin, adviser of the fraternity, will be the speaker for the next meeting.

### Sigma Zeta Epsilon

Rough initiation for Zete pledges

## College Women Discuss Varied Spring Affairs

Gammas Elect Officers; Miss Marjorie McGilvrey Re-Elected President

Delta Alpha Gamma women elected officers for the spring semester at the meeting held Wednesday. Miss Marjorie McGilvrey was re-elected president, Miss June Larsen, vice-president, Miss Adelyn Sylvester, inter-sorority council representative, Miss Marjorie Church, secretary, Miss Cora Bell Griffin, treasurer, Miss Maudie Boswell, sergeant at arms and Miss Betty Worden, historian.

Discussion of plans for the houseparty which was held Saturday and Sunday completed the business meeting.

### Kappa Sigma Theta

Second degree initiation of Kappa Sigma Theta pledges was held Tuesday evening at the home of Miss Mildred Brown. The other members assisting Miss Brown were Miss Helen Rosenzweig and Miss Matilda DeBord.

Formal initiation will be given the fourteenth of this month at the YWCA. Miss Eleanor Hoyt heads the committee and working with her are the Misses Jayne Hall, Louise Richardson and Kathryn Thomas.

### Alpha Beta Upsilon

Alpha Beta Upsilon held a short business meeting at which plans for rough initiation of pledges were discussed. Plans were made for a benefit cooking school which will be held at Rhodes Brothers February 13.

### Lambda Sigma Chi

Miss Margaret Sines was appointed chairman of the committee in charge of the Lambda Sigma Chi chapel program to be March 12. Miss Betty Kuhl, Miss Helen Harmer and Miss Virginia Smythe are working with her.

The formal initiation committee is headed by Miss Helen Stalwick with the Misses Ruth Leo, Millie Kloepper and Katherine Munroe assistants. Miss Barbara Beardsley is in charge of the rush tea tomorrow. The Misses Mary Louise Felzer, Helen Williams and Clara Oliver are helping her.

will last an entire week starting next Wednesday under the chairmanship of John Hazen. Plans were also made for the barn dance which will be given Saturday with Gene O'Donnell making arrangements.

Costumes for your Masquerade are at



**Thorsen's**  
926 1/2 Broadway

**Hurry!**



We're Eating at the  
**XXX BARREL**

## Hold Houseparties For Initiations

Pledges and Members Attend Annual Parties Held at Summer Camps

Three sororities at CPS held houseparties this week end. The Alpha Beta Upsilon sorority spent the week end at Epworth Heights, with Katherine McConron as chairman. In charge of rough initiation for the pledges were Misses Elsie Taylor, Mabel Wittren and Esther Stuft. Those who received initiation are the Misses Elizabeth Hardison, Sara Louise Doub, Edythe Mae Peele, Doris McClymont, Dolores Hargett, Irene Smith, Evelyn McAfoos, Esther Haggerty and Maxine Baichley.

### Harbor Heights

The Delta Alpha Gamma houseparty was held at the home of Miss Margaret Keil at Harbor Heights. Arrangements were made by the Misses Floramae Davis, Regina Carrier and Isabelle Hudson. Initiation was planned by the Misses Maudie Boswell, Olive Whorley and Mae Morrison.

Receiving second degree initiation were the Misses Mary Louise Erickson, Shirley Foote, Carolyn Geddes, Pamona Hudson, Margaret Huseman, Margaret Keil, Betty Noble, Mary Jane Roberts, Eleanor Trott and Mary Young.

Those initiated were the Misses Louise Boyd, Barbara Bryan, Mary Crossland, Jane Burwell, Betty Griewe, Margaret Heuston, Evelyn Hopkins, Virginia Lee, Betty Leamen, Helen May, Marion McCulloch, Kathryn Nelson, Clarke Oberlies, Barbara Rothermel, Betty Schaad, Dorothy Shaw, Donna Rue Teats, Roberta Walker, Marjorie Ranck, Maurita Shank and Mrs. Buena Maris. Miss Ann Crapser was the chaperone.


## Students Gather At College Party

Combined Theater Party and Dance Given

A "Valentine" motif, carried out with comic valentines, large hearts and a false ceiling of hearts was used for the all college party Friday evening. A show at the Rialto was followed by the sport dance in the gymnasium. Dancing from 9 to 12 was to the tune of George Cropp's orchestra. Miss Jane Gebert was general chairman assisted by Walter Fawcett, Howard Annis, Clayton Lupton and the Misses Billie Acton and Mabel Wittren.

Patrons and patronesses were Mrs. Lyle F. Drushel, Miss Grace Johnson, and the Messrs. and Mesdames Charles T. Battin, Marvin B. Schaffer, S. F. Herrman, Derrol Thomas, Frank G. Williston, Edward H. Todd and Raymond G. Drewry.

Try a Dish of "Wee Freeze" AT **Burpee's**



Gotham and Theme Hosiery

*Lou Johnson* 915 Broadway

**TYPEWRITERS**  
SOLD - RENTED - REPAIRED - EXCHANGED  
The **STATIONER'S, Inc.**  
926 PACIFIC MAIN 2153 927 COMMERCE

**ROYAL'S HAIRCUTS**  
ASSURE YOU SATISFACTION  
2704 No. 21st Between Anderson & Oakes

Youth Is Open Minded It Is Looking For New Ideas

Electrical development in Tacoma has caught the imagination of the young people of this community.

- An Electric Range for Safety, economy, and clean automatic operation.
- Electric refrigeration for health and convenience.
- An Electric Flatwork Ironer to eliminate drudgery and hard work.
- Electrical appliances for convenient and low cost operation.

Older heads are feeling the force of youth in its demand for the conveniences, comfort and economy of electrical modernization.

**TACOMA LIGHT**  
IT'S YOURS - USE IT!  
IRA S. DAVISSON, Commissioner Public Utilities



### Loggers Split Pair of Games With Bearcats

**Lumberjacks Win 48-38, After Losing Friday; Play Linfield Tonight, Tuesday**

The Lumberjac cagers are favored to stay in the thick of the scramble for the 1936 Northwest Conference crown with a brace of wins over Linfield College when the two quintets clash tonight and Tuesday evening at McMinnville, Oregon. The twin bill will complete Puget Sound's out of town conference schedule.

The extent to which the shooting eye of Vaughn Stoffel, high-scoring forward, is responsible for Puget Sound's success on the maples was graphically shown last Friday and Saturday evenings, when the Loggers divided a two-game series with the Willamette Bearcats at Salem. The Bearcats held Stoffel scoreless in Friday's tilt, and won easily, 39 to 23. Stoffel went on a rampage Saturday to count 11 field goals and a free throw for 23 points, and the Loggers captured a 48 to 39 decision.

By breaking even in the series, CPS and Willamette left the undefeated Fhitman quint alone at the top of the conference standings, but both remained definitely in the title chase, since both have yet to play the Missionaries.

Willamette went out in front of the Loggers in the opening minutes of Friday's contest, and held a commanding lead throughout the tilt, leading 25 to 13 at the half. Jerry Gastineau paced the winners with 15 points, while Erlindg Tollefson contributed 9 points to the CPS total.

Saturday's encounter, on the other hand, was anybody's game until the closing minutes. The Lumberjacks held a 28 to 22 advantage at half-time, but the Bearcats closed the gap and took the lead twice in the second half. Stoffel's shots began to find the basket from all angles in the last few minutes to put the game on ice.

**FRED SAYS:**

Something to warm you up on a cold day

at

**Thiel's**

2615 Proctor

DEWGODRADDE



**TO THE STUDENTS At C. P. S. IT'S A FACT**

Over 15,000,000 housewives cook with gas.

**WHY?**

Because gas is best for cooking. Tell the folks at home.

Please. Thank you.

**WASHINGTON GAS & ELECTRIC COMPANY**

10th at A St. MA. 6131

### Intramural Basketball

**STANDINGS**

Team	Won	Lost	Pct.
Delta Pi Omicron	1	0	1.000
Sigma Mu Chi	1	0	1.000
Sigma Zeta Epsilon	1	0	1.000
Terrible Swedes	1	1	.500
Alpha Chi Nu	0	1	.000
Delta Kappa Phi	0	1	.000
Peter Pugets	0	1	.000

**This Week's Schedule**

Tuesday: 12:05, Chi Nus vs. Delta Kapps; 1:05, Mu Chis vs. Peter Pugets.

Thursday: 12:05, Sigma Zetas vs. Swedes; 1:05, Omicrons vs. Chi Nus.

**WOMEN'S BASKETBALL SCHEDULE**

Monday, Feb. 10, Alpha Beta Upsilon vs. Lambda Sigma Chi; Wednesday, Feb. 12, Delta Alpha Gamma vs. Lambdas; Friday, Feb. 14, Kappa Sigma Theta vs. Lambdas.

Monday, Feb. 17, Betas vs. Independents; Wednesday, Feb. 19, Gammas vs. Lambdas; Friday, Feb. 21, Betas vs. Thetas.

Monday, Feb. 24, Independents vs. Lambdas; Wednesday, Feb. 25, Gammas vs. Thetas.

(All games played at 12:05 o'clock).

### Theta Six Upset By Independents

The Independents upset the Kappa Sigma Theta sextet, 29 to 27, and Delta Alpha Gamma defeated Alpha Beta Upsilon, 25 to 7, last week in the opening games of the intersorority basketball schedule.

The Independent-Theta contest was one of the most exciting tilts in several seasons, with the Independents breaking a tie score in the last minute of play to win by the two-point margin. The game was exceptionally rough, the Thetas losing all but one member of their first team via the foul route before the final whistle. Mary Walters scored 21 points for the Independents, while Jane Gebert and Eunice Perkins contributed 13 apiece to the Theta total.

In the Gamma-Beta game on Wednesday, Mary Jane Roberts counted 13 points for the Gammas, while Floramae Davis and Maudie Boswell chalked up six apiece.

**Ski Pictures Coming**

The motion pictures of skiing on Mt. Tacoma which were to have been shown last Wednesday in chapel by James Hutchinson, representative of the Rainier National Park company, will be shown during chapel period tomorrow at the regular meeting of the CPS Ski club. Plans for an all-college weekend at the mountain will also be discussed, and all students and faculty members are invited to attend the meeting.

HOT, BUTTERED FRESH, ROASTED

**POPCORN and PEANUTS**

CRAIG and LARRY

### AFTER THE PLAY

**Proctor St. Grill**

For Those Delicious Hamburgers and Hotdogs

FREE PING PONG

No. 26th and Proctor

Roy Carlson, Prop.

### Zete, Swede Fives Capture Opening Tilts

### Omicrons, Mu Chis Also Win As Intramural Cage League Starts

A smooth working Sigma Zigma Epsilon five, led by Don Richmond and Art DeBord, moved in as early season favorites in the intramural basketball league Tuesday noon with a decisive opening victory over the Delta Kappa Phi five, 44 to 18. The losers were unable to penetrate the defense of the Zetes, who were far out in front throughout the entire contest.

In the closest and most surprising contest of the opening week's play, Alpha Chi Nu dropped a 29 to 28 decision to the Terrible Swedes on Tuesday. Archie Cox and Art Linn shared scoring honors for the winners, while Mel Miller led the Chi Nu attack.

Delta Pi Omicron walked over the Peter Pugets, 39 to 9, in a Thursday game. Howie Hass led the scorers with a 19-point total, while Bob Wheeler paced the losers with five counters.

The Swedes, only team to play two games last week, failed to repeat on Thursday, when they bowed to a fast Mu Chi quintet, 40 to 24. Maynard Carlson and Ed Burkland sparked the winners, with Cox again outstanding for the Swedes.

### Loggers Win Two League Openers

Logger varsity cagers opened their 1936 Northwest conference schedule with a pair of victories over Pacific university, winning 61 to 46 and 58 to 41 in two rough and high scoring encounters, played on the CPS maples.

Vaughn Stoffel, chunky Puget Sound forward, topped individual scorers for the series, chalking up 18 points in Friday night's tilt and adding 19 more Saturday evening. Erling Tollefson and Bud McFadden, the latter a freshman, were also in good form, scoring 27 and 21 points, respectively in the pair of games.

Johnny Mills, Pacific guard, sank unorthodox shots from all angles in Friday's clash to take scoring honors with 19 counters, but was held scoreless during his brief stay in the second fray of the series.

In a preliminary to the Saturday conference tilt, a team of seniors avenged a drubbing in final exams by defeating the faculty quintet, 22 to 16, in a game featured by ragged play, horseplay, queer refereeing and queerer attire. Revenge was particularly sweet for Howie Hass, who led the senior offense, while Lou Grant and O. F. Hite played good ball for the more elderly aggregation.

### Sport Shots

By Jack Reese



Logger conference title stock took a sharp drop for two days last week, but it had returned to normal before the squad left on Thursday for out of town series with Willamette and Linfield quintets. The reason for the fluctuation was the announcement that Vaughn Stoffel, sharp shooting forward, would be unable to return to school this semester, because of an attack of the well-known "bursar-itis." "Stuff", recovered quickly from the financial ailment, however, and accompanied the squad. Stoffel's sensational scoring record in games to date this season indicates that he is pointing toward his best year. He had rolled up 141 points prior to last weekend.

Another interesting intramural basketball season is in prospect, if opening games last week are indicative of the class of ball which may be expected. The Sigma Zeta Epsilon quint, which shared championship honors with Alpha Chi Nu and Delta Pi Omicron fives last year, appears to be the class of the league this season, judging from its easy victory over Delta Kappa Phi last week.

The Loggers' showing in holding the University of Washington aggregation to a 52 to 40 score here several weeks ago is looking better every day. The Husky five mopped up all opposition in its first eight Coast Conference games, including a clean sweep of a four-game stand with the strong University of Oregon squad.

The College club, composed of past, present, and perhaps future CPS students, finished second in the second half standings of the local Church-Commercial league. They lost close contests to Peoples Store and the Independents, after checking in an early victory over Sumner, who finished their schedule without further defeat to annex the title.

**SKING IS JUST GETTING GOOD**  
We Carry Every Thing For The Sport  
**SKIS FOR RENT**  
**WASHINGTON HARDWARE CO.**  
924 Pacific Ave.

**RIALTO**  
STARTING THURSDAY!  
Bing Crosby-Ethel Merman  
Charlie Ruggles  
IN  
"Anything Goes"  
The "Tops" of Musical Shows!  
And  
Elissa Landi  
Kent Taylor  
"Without Regret"  
Last Three Days!  
"HITCH-HIKE LADY" and  
"THE LAST OUTPOST"

### Women's All-Star Sextet Picked

Inaugurating a new practice in women's athletics, an all-star basketball team has been selected by a committee headed by Miss Fernina Collins, women's athletic director. In the future, all-star teams will be chosen for each women's sport throughout the year.

The following were named on the basketball all-stars: Forwards—Alice Grimes, senior; Jean Hartman, sophomore; and Mary Walters, freshman. Jumping centers—Helen Rosenzweig, sophomore; and Ruth DeSpain, senior.

Side centers—Carol Munch, sophomore; and Helen Kojo, freshman. Guards—Betty Worden, sophomore; Pomona Hudson, freshman; and Mary Fay Fulton, junior.

### Golf Meeting Called

All girls interested in taking up golf are asked by Miss Fernina Collins to meet Tuesday noon in room 108.

**HOYT'S**  
Make DOUGHNUTS  
Sixth and Prospect  
Private Dining Room For Parties

**John Hamrick THEATRES**  
**MUSIC BOX**  
NOW till Thursday  
Rafael Sabatini's story of Love, Piracy, and Adventure!  
**"CAPTAIN BLOOD"**  
with a giant cast of stellar performers  
15<sup>1</sup> TIL 25<sup>5</sup> TIL 35<sup>5</sup> NITES

**ROXY**  
NOW till Friday  
The Greatest of All Jungle Thrillers!  
**"BEYOND BENGAL"**  
also  
MIRIAM HOPKINS  
JOEL McCREA  
in  
"SPLENDOR"  
15<sup>1</sup> TIL 25<sup>5</sup> TIL 35<sup>5</sup> NITES

**BLUE MOUSE**  
NOW 'TILL SATURDAY  
Alexandre Dumas'  
**"THE THREE MUSKETEERS"**  
and  
MARY ASTOR  
in  
"MAN OF IRON"  
15<sup>1</sup> TIL 25<sup>5</sup> NITES