

THE TRAIL PINK SPORT EDITION

The Puget Sound Trail

ANNUAL TRACK CARNIVAL TOMORROW

ARNTSON ELECTED YELL KING

VOLUME III.

COLLEGE OF PUGET SOUND, TACOMA, WASHINGTON, FRIDAY, MAY 8, 1925

NUMBER 26

LOGGERITHMS

By "MIKE"

The Loggers may not have won in the "Lucky Seventh," but ask Bill Schlegel if 11 ain't as good as 7.

It was as we feared. Dick Jones is from Missouri. And, what's more, he has to be chaud.

Next guy that asks us what we wear on our weak-end is gonna find out we're not so weak all over.

"Give a Man a Horse he can Ride," sings the Men's Glee Club. Guess it'll have to be a Hobby Horse in our case.

The umpire leads a tough life. To the ordinary fan he is regular game on which there is never closed season. He is to be used as a target for everything, from dirty looks to all kinds of Fauna and Flora. To the ball-tossers themselves he is either Fair to middlin' or absolutely rotten. He is either a necessity or a menace; to be tolerated or exterminated. To the female fans in general he is the poor unfortunate man who never gets to bat, but who tells the pitcher's name in the lovely baritone voice. To the small boys he is the dirty guy who kicks them off the foul line. Yea, the umpire should be pitied for other reasons besides his being blind.

People Who Make War a Necessity

Guy who gets to the Commons ahead of us and eats all the pie.

Quartette took on a big feed before singing, but their turn to sing came too soon. Ralph Brown reluctantly left off punishing a platter of rhubarb and took up his duties as the anaesthetic basso.

Little Sketches of Famous Loggers

Bruce (Hoss) Blevins: Always dangerous. Never holds less than 3 Jacks.

Peter X. Carli: A little man, but oh my. Packs the biggest chew on the squad.

Harry (Rabbit) Enochs: A dangerous man at the home plate. Eats with his knife.

Michael (Tentpole) Thorniley: Also a heavy hitter, while beating carpets.

Maynard (Pete) Peterson: Hasn't missed Epworth League in 3 days.

Gardner (Old Guard) Schuler: Parts his hair on the side and wears garters.

Dale (100 per cent Proof) Ginn: Wears his suit like a veteran. Sings second tenor.

Ed (Okker) Schwarz: Superior at making pickups. Telephone Main 480.

Today's Coal Oil Painting



Hereinbefore is shown in unmistakable personification the first Honest Umpire, at the age of 60. Picture shows how he will look 75 years from now.

With artistic flourish Ed Newell strode into the beanery and yodelled in senatorial tones, "Hey, waiter!" "Yessir," agreed the Knight of the Greasy Apron meekly, "and how will you have it served?"

LOGGERS BEAT VANDALS

RELAY CARNIVAL AT U. W. STADIUM SATURDAY AT 2:30

UPTON MAY SET RECORD

Logger Relay Team Is in Good Condition; Locals After Class B Laurels.

This season it looked as though no track would be available and consequently few men answered the call. The track has now been surveyed and leveled and while not a track for competition is very good for practice. On this temporary track the men have worked faithfully and persistently and, although they may not win their event, they are to be commended for their sincere interest in the work.



Capt. Ted Upton

The team travels to Seattle May 9th for the relays. Upton will take the distance, Lindstrom and White the middle distances and Pugh the 220 dash.

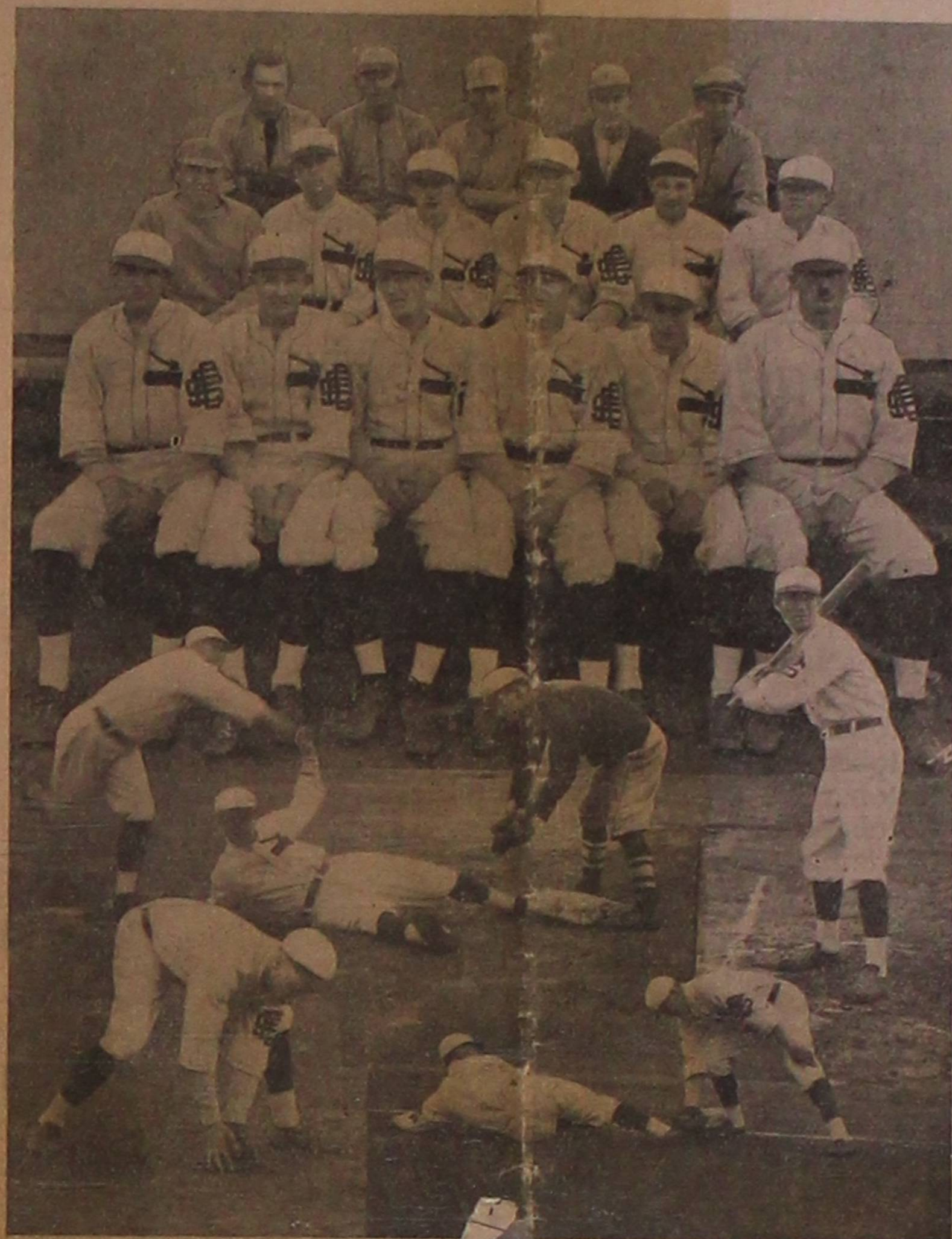
This team as a whole is not as fast as that which won two years ago. Upton, however, seems to be several seconds faster in his three quarter distance than two years ago and this will make up to some extent for the lack of speed in the other contestants.

The Coast Conference meet is to be held in Seattle this year and any runners who show reasonable speed are to be entered in this meet also.

It is expected that the track will be completed before another season comes. As outlined the plans call for a quarter mile flat track with a gravel base and clay and cinder surface. The finish is patterned after the Drake track, which is famed the world over for the speed made on it. The straight-of-way is to be 130 yards long with a width of 30 feet. The remainder of the track will be 24 feet in width.

Miss Marion Van Winkle has taken up residence in the dormitory. This brings the number of girls abiding in the dormitory up to an even dozen.

This Logger Squad Turned the Trick



The above photograph shows the Logger baseball squad that licked the University of Idaho Vandals here last Friday, May 1st. In this outfit is more baseball talent than has ever represented the College of Puget Sound on the diamond in the past; and it is doubtful whether this school will ever have a faster stepping nine in the future.

In the above group picture, reading from left to right on the front row are: Maynard Falconer, right fielder; Elmer Beckman, catcher; Mike Thorniley, center fielder; Eddie Schwarz, first base; Maynard Peterson, second base, and Bruce "Horse" Blevins, pitcher. Second row: Coach R. W. McNeal, Dale Ginn, third base; Weston Aldrich, catcher; Harry Enochs, center fielder; Pete Carli, short stop, and Clare Guest, pitcher and athletic manager elect. Top row: Ernie Ross, outfielder; Alfred Samuelson, pitcher; Ierman, second base; Ernie Goulder, left fielder, and Waller, pitcher. Gard Schuler, left fielder, is not shown in the picture.

TENNIS SQUAD IS HARD AT WORK FOR TOURNAY

Trip to Oregon Assured, and Team Will Play Willamette, Pacific and Others

The Logger tennis stars will be called upon this season to uphold their reputation against the best talent in the Northwest. Tournay Continued on Page 2

NOVEL BALL GAME MAY BE ARRANGED FOR

University of British Columbia Would Meet Loggers in Two Styles of Play

Next fall the College of Puget Sound may be a participant in a novel football game. The University of British Columbia is dickering Continued on Page 2

Air-Tight, 11 Inning Game Goes To Puget Sound Nine; Was Invaders First Loss

BLEVINS OUT-PITCHES GOLDEN

Local Baseball Players Win Greatest Sport Event in Annals of College History; Idaho Scores First in 10th

By Dale Ginn

Playing a heady brand of ball throughout the entire game, the Loggers defeated the strong University of Idaho nine 3 to 2 on the local campus diamond, last Friday, in a thrilling 11 inning tussle. Both teams were held scoreless through the first nine innings until the Vandals broke loose in the tenth and garnered the first two runs. The game was of professional caliber, and for those first nine innings Blevins for the Loggers and Golden of the Vandal outfit engaged in one of the prettiest pitching duels that could have been imagined.

In the 10th frame the University of Idaho scored two runs on two hits and two sacrifices. The locals then tallied two runs on a walk, two hits delivered by pinch hitting, and a sacrifice. In the 11th, Leak, who was responsible for the first hit in the 10th inning rally, went to the mound and retired the Vandals without trouble.

The last half of the 11th saw the Loggers put over the final and winning run by two hits, a sacrifice, and a squeeze play; and thus turn a possible defeat into a glorious victory.

In the initial period, after Blevins had struck out Idaho's lead off man, Lehrba made a two base hit. Wicks then hit into a double play retiring the invaders. In the Logger's half of the inning Pete Carli took first on Golden's error. After Aldrich and Peterson had taken their three healthy swings, Schwarz came through with a single to right, but Carli was out as he over-slid third base, thus spoiling all chances of scoring in that inning.

In the third canto, with a man on first and second through errors and a sacrifice, Blevins again fanned Idaho's lead off man and pulled the local aggregation out of the hole.

In the fourth Schwarz poled out a long hit that was good for a two bagger. This was the last hit obtained until the seventh.

The Loggers' proverbial seventh inning rally was checked by spectacular fielding, with Cameron taking Enoch's fly deep in center field, and Wick doing uncanny fielding in spearing Falconer's long drive far behind his position. In the first of the ninth Golden walked, Kleffner sacrificed him to second, Golden then advanced to third on Lehrba's out, second to first. With Wick up and a man on third the Vandals had their chance to score and win the game, but the Puget Sound mound artist retired him without opposition. In the last half of the ninth Carli singled, Aldrich advanced him to second without a sacrifice. Peterson put Carli to third and then Schwarz was out at first on a close decision. Then came the thrilling fire works of the 10th. Lawson singled, Cameron hit to center, Lawson taking third on the hit and scoring on Hawerton's sacrifice. Cameron scored on Lansdon's bunt and Vesser was safe on a sacrifice hit. The affair ended when Fields, pinch hitting for Golden, fanned and Kleffner was thrown out at first.

The last of the 10th meant do or die for the Loggers. Green, now pitching for the invaders, hit Enochs. Samuelson, batting for Falconer, fanned, and Leak hitting for Blevins, singled to center, advancing Enochs to third. Beckman, batting for Ginn, came through with a base knock and scored Enochs. Although Lawson made a spectacular stop of Schuler's hot grounder to third and getting him out, Leak scored the second and tying tally on the play. Carli was thrown out at first. After Leak had come through with a timely hit that helped tie the score, he stepped to the mound in the first of the 11th and retired the head of the Vandal batsmen by forcing him to fly out at second, and striking out Lehrba and Cameron. The Loggers made their half of the 11th good when Aldrich singled to center, Peterson repeated, Schwarz advancing them by a sacrifice, and Aldrich scoring the winning run on a pretty bunt by Enochs.

PAUL LUNG IS ELECTED PHILOMATHEAN HEAD

At the recent election of the Philomathean Literary Society the new officers for the coming year were elected. Paul Lung was elected President, Sam Pugh was elected vice president, Marian Gynn as secretary and Robert Burrows as treasurer.

According to the custom of the society the minor offices will be filled by appointments made by the President.

Friends of Miss Maude Whitmore will be pleased to hear that she has pledged to Zeta Tau Alpha at the University of Washington. Miss Whitmore was a member of Kappa Sigma Theta when she attended the College of Puget Sound.

Bring an Athlete to College With You Next Fall

MAY FESTIVAL WILL BE LATE THIS MONTH

On account of the many other activities on the campus this season of the year the annual May Festival at which the May Queen is crowned has been indefinitely postponed until late in the month. It is expected that the weather will be better at that time. Also the girls of the different gym classes are practicing some folk dances to be given at that time. Every one is looking forward to the tug-of-war between the Frosh and the Sophs that is always held during the May Festival.

Eleanor Kenrick has been chosen as the May Queen for this year and Ed Amende as Duke. Helen Small and Frances Clinton will attend the Queen and Herold Wade and Clinton Hart upon the Duke. As soon as a definite date is set notice will be given.

College of Puget Sound's New Athletic Field



The Logger's athletic field just after it had been graded and scraped. This field now is considered one of the best in Tacoma and vicinity. On this field is the fastest baseball diamond in this city, a quarter mile track with a hundred yard straight-of-way, a football gridiron, and spectator's stands.

In the background in the center can be seen the spacious gymnasium,

one of the largest and best equipped in this section. The structure is of brick and a work of architectural art. Farther off and to the left of the Gymnasium is the Jones Hall, the main building of the campus. The campus now covers some fifty acres. It is now in the hands of expert landscape gardeners and will soon be transformed into one of the beauty spots of the city. A nine-

hole golf course will be laid out in a circle around the campus. This will add to the beauty of the grounds and will encourage golfing as a college sport here at Puget Sound.

Next fall two navy teams, Linfield, Willamette, and Pacific University will play the Loggers on this athletic field.

Loggers' Gridiron Eleven Showed Up Well Last Fall

McNEAL SPEAKS OF PLANS FOR COMING SEASON

Plea Is Made for Conscientious Effort on Part of Students to Help Bring New Men

By Coach R. W. McNeal
The Logger teams have had a fairly successful year in athletics. On the whole the teams have surpassed those of former years. Our basketball and baseball teams of this year undoubtedly were the best in history. The football team was perhaps as good as in former years but the schedule was far more difficult than previous schedules. This perhaps made the team of this year appear weaker than in former years, while critics judged it to be about their equal.

What About Next Year
In next season's football schedule we open with two Navy teams on our home field, on Oct. 3 and 10. Then on Oct. 17 and 24 come Linfield College and Willamette University. Linfield failed to stop us last season but we must remember that they were playing only their second year of football in their college and all of their men had to be developed during those two years. Coach Pettit has just completed spring practice and announces that Linfield will place a much stronger team in the field next season.

Willamette always puts a strong team in the field and forces us to extend ourselves to wrest victory from her. She has tasted defeat at our hands for four years in succession and with the Bearcats next season every game except that with the Loggers is a practice affair. The Puget Sound game is the one they expect to win.

Following the Willamette game we meet Pacific University. It we reverse what has just said about Puget Sound and Willamette it might be applied to the last four years of football competition with Pacific. The past four seasons have given victories to Pacific. Scores have gradually decreased in size until a bare six points was all Pacific scored last season.

Whitman, a new opponent for the Loggers will be played in Walla Walla Nov. 14. Dope favored the Loggers to win from Whitman by a small margin last season but the Missionaries may be expected to have a strong team next season, as many of their men in last season's play were freshmen.

The last game of the season brings the Washington Huskies to Tacoma on Nov. 21st. Washington invariably has a heavy team with innumerable reserves, which means a difficult game for any small college team. The Loggers will fight them to the last inch, in spite of the weight handicap, and though they may be outscored they will never be defeated.

The schedule as outlined is by far the most difficult ever undertaken by a Puget Sound team. If we expect to meet with success in such a schedule it is necessary that we have new men on the squad next season. Men will be lost through graduation and dropping out of school. These must be replaced and others added. This can be done only through personal effort by the students of our college. You can exert a greater influence on your friend through a personal appeal than all the letters and bulletins sent during the entire year. If you are here because you like this institution why not tell your friend and bring him with you when you return next fall. Every institution has some things connected with it that do not appeal to all of us but those things should be forgotten in our attempt to make ours the most satisfactory school of its kind in America.

Bring an athlete with you next fall. You will not regret it, neither will he. When he has developed into a star and you see him win victories for Puget Sound you will be fully repaid for the little effort you may have put forth to influence him in coming.

LAMBDA
Thursday, April 30, at a special meeting, the Lambda Sigma Chi Sorority chose their new officers for next year. The returns were as follows: Miss Winifred Longstreth, president; Miss Maude Hague, vice president; Miss Everilda Brewitt, treasurer; Miss Lois Berringer, secretary; Miss Genevieve Bitney, corresponding secretary; Miss Alice Rockhill, conductress, and Miss Elena Hart who is joining us next year as inter-sorority representative.



These Logger grid performers of the past season are from top to bottom: "Red" Tatem of Tacoma, Alden Thorson of Tacoma, Lowell Allerdice of Auburn, Bill Smith of Spokane, Pete Carlil of Wilkeson, and Hap Blackwell who hails from Albany, Oregon. LeRoy Brownling of Plummer, Idaho; Mike Thornley of Seattle; Richard Jones of Spokane, Ted Bankhead of Seattle, and Gard Schuler of Seattle.

DELTA
The Delta Alpha Gamma parent-faculty reception is to be held Friday night, May 8, in the Woman's Club House. The rooms will be gayly decorated in the sorority colors and a delightful program has been arranged. The guests will include the members of the faculty, the Delta Alpha Gamma parents, and the patrons and patronesses, Mrs. R. L. McCormick, Mr. and Mrs. Horace G. Scott, Mr. and Mrs. C. O. Lynn, Mr. and Mrs. Charles L. Robbins, Mr. and Mrs. R. Lester Kelly, Dr. and Mrs. W. W. Mattson, Mrs. Hovious, Mrs. Burnside, Miss Reneau, Mrs. Fryer and Senator Davis.

Bring an Athlete to College With You Next Fall

Here Are Four Veteran Gridders



These four Logger gridiron luminaries are, from left to right: Captain for the past two years, Bruce "Horse" Blevins from Albany, Oregon, considered by local football followers the best tackle in the Northwest; Captain-elect Don Wellman who has played about every position on the team, is a Tacoma

man; Ed Amende, of Tacoma, and veteran of many Logger games; and Eddie Schwarz, of Tacoma, one of the greatest all around athletes of Puget Sound. All but Amende of this quartet will be back next fall to go against the University of Washington.

Football Schedule Now Made

The Loggers' 1925 football schedule is out. It is believed to be the most complete and pretentious array of games ever attempted by this school, and it is also one of the best balanced schedules that could possibly have been arranged. Five intercollegiate games and two with Navy teams from Bremerton, and of these, five games will be played at home with a possible six.

- The schedule is as follows:
October 3—Navy—Here.
October 10—Navy—Here.
October 17—Linfield—Here.
October 24—Willamette—Here.
October 31—Pacific—Here(?).
November 14—Whitman—Walla Walla.
November 21—University of Washington—Here.

TENNIS SQUAD IS HARD AT WORK

Continued from Page 1
ments have been arranged with P. L. C., St. Martins, Willamette and Linfield. Linfield and Willamette always have good tennis teams. Willamette has been outstanding in tennis for the past few years. But this is not all. The Northwest College Seattle May 29th and McNeal has entered the racquet slingers in this meet also.

Four men have been picked for the team. These are Smith, Hokansen, Johnson and Goore. Smith is the only new man of the four but he is playing good tennis and is the equal of any of the others. The old men, Hokansen, Johnson and Goore are all playing bang-up games and it is believed they will win their tournaments and, if they are lucky in their drawings may go to the finals in the N. W. tournament.

Two new clay courts are being constructed on the Southeast corner of the campus. These will be finished within a couple of weeks and this will make for greater interest in the net sport at the College.

NOVEL BALL GAME WITH B. C. UNIVERSITY

Continued from Page 1
ing with Coach McNeal for a game to be played under two different sets of rules. The northerners want to play the first half of the game under the American rules of football and play the second half of the game with the Canadian rules. It is said that the Canadians can play the American style pretty nearly as well as their own, but it is a question as to whether the Loggers could "absorb" the new way in so short a time.

McNeal is not sure whether he wants to play this mongrel type of game but has taken the matter under advisement. If such a game is scheduled it will no doubt draw a big crowd. Last year the practice of playing the game under two sets of rules was begun when the University of Detroit played one of Canada's colleges. This style of game is gaining favor in the eastern part of the United States near the Canadian border and it is hoped that a trial may be given it in this section.

The Altrurian house party, held May 2 and 3 on Silcox Island, was voted a success by all who came. Chaperons were Professor and Mrs. Regester, and Professors Seward and Budd. Senator Davis was a Sunday guest. The weather was ideal, but, as for the water, only those who ventured in can be sure of that. One young lady tried drowning in a foot and a half of water but found that it couldn't be done. She only lost her ardor and became a little pensive until after lunch. Snipe hunting Saturday evening proved

unusual in that a snipe was actually caught. At least the hunters claimed that it was, but it looked suspiciously like an owl and it was stuffed at that. Professor Regester's stories later in the evening made us wonder slightly, but of course no one doubted his veracity in the least. Two people learned through bitter experience the necessity of being on time to dinner, especially a Sunday dinner. They can vouch for the fact that leavings after everyone else is through, aren't so very nice. One important discovery made Sunday afternoon was that some of the C. P. S. students are superior to the faculty. Not in an intellectual way, of course not, but they defeated them at pitching horseshoes, and that is something to be proud of. Our only regret was that more of the Altrurian members did not find it possible to be with us and enjoy a very good time.

Monday's subject was on "Famous Buildings," extempores on such buildings adding flavor to the program.

Vocal solo, Marguerite Le Master. Westminster Abbey, Hulda Johnson.

Sistina Chapel, Norma Tollefson. Piano solo, Dorothy Knight. Solomon's Temple, Nettie Larson. Famous Buildings in Chehalis, Toots Waller.

Famous Buildings in Yakima, Mark White. Famous Schools in Which I Taught, Miss Budd. Famous Buildings in the Philippines, V. Villafuerte. Famous Buildings in New York, Townsend Moore.

MR. MUFFLEY SPEAKS AT Y. M. C. A. MEETING

Our Y. M. C. A. group experienced a very interesting and instructive speech on education Tuesday. Mr. Muffley opened his discussion by stating that "educated men are the hope of the world."

Proctor Street District

Proctor Pharmacy
W. P. RAGSDALE
North 26th & Proctor Sts.

Sanstrom's Department Store
North 26th and Proctor
Proctor 903

SANSTROM'S GRACE SHOP
Expert Marcelling 50c
Bob Curl 25c
No. 27th & Proctor Proc. 179

MEN'S GLEE CLUB STARTS ON TRIP TONIGHT

Sing at Shelton and Montesano

The Men's Glee Club with the orchestra, leaves Friday afternoon for a two day trip. Friday evening a concert will be given at Shelton and Saturday evening the people of Montesano will be favored by an entertainment.

The glee club and orchestra, under the direction of Prof. Hanscom has been doing splendid work. Last Friday evening a concert was given before an appreciative audience of Riverton citizens. A concert may be given at Buckley before the club disbands and it will be decided after the Montesano program whether or not a home concert will be given.

Prof. Hanscom has arranged a varied program. Besides the singing of the glee club and the playing of the orchestra, the quartette will sing; Miss McAuley will play a piano solo; Miss McAuley and Miss Misner will play a piano duet; Franklin Johnson will render a violin solo; Anthony Arntson will favor the audience with a flute solo; Miss Misner and Mr. Goulder will give a humorous duet; and the entire glee club will give a representation of life in the men's dormitory.

The men taking part in the coming concerts are: 1st tenors, McNeal, L. Durkee, Hague, 2nd tenors, Searing, D. Ginn, McCune, Johnson, Boyles, 1st bass, Fretz, M. Ginn, Smith, L. Brown, Goulder, 2nd bass, R. Brown, G. Durkee, Carlson, Thornley. The orchestra: Violins: Hilda Melin, C. Halvorsen, F. Johnson, G. Bradbury. Cello: R. Boyles. Flute: A. Arntson. Cornet: L. Hague. Saxophone: L. Durkee. Trombone: D. Searing. French horn: L. Lindstrom. Oboe: G. Shuler. Gladys Waters is accompanist for the orchestra and Verna McAuley accompanies the glee club.

For Your Desert Try Puyallup Ice Cream
GOSSER'S FOUNTAIN & LUNCH
6th & State

A better hair cut for the regular price
PARK BARBER SHOP
Roy D. Russell
817 Div. Ave.

Students' Introductory Offer
This coupon is good for 50c on a marble wave
NOT GOOD ON SATURDAY
Vanity Box Beauty Parlor
620 Jones Bldg. Main 3410

KODAKS
and
EXTRA GOOD FINISHING
NO EXTRA COST
Shaw Supply Co. Inc.
1015 Pacific Ave.

JEWELERS
TO TACOMA
for
FORTY YEARS
Mahncke & Co.
919 Broadway

COLONIAL THEATRE
STARTING SATURDAY
Doug Fairbanks
IN
"THE THIEF OF BAGDAD"
POPULAR PRICES

RIALTO THEATRE
STARTING SATURDAY
Dick Barthelmess
IN
"NEW TOYS"

THE STONE-FISHER
BROADWAY AT ELEVENTH
DEPENDABILITY
LOOKING AHEAD
Think of the day when that "Mem" book, with its scrawling signatures and characteristic snapshots and trophies of war and play will be the treasure chest of your memories.
New small shapes, with "Memories" stamped in gold on a tinted or tooled leather, priced 98c and \$1.98.
Autograph books in tooled effect, priced 59c.
—Stone-Fishers, Stationery Department.

Basketball Team Made Good Record For Past Season

HOOP PASTIME CONTINUES TO SET FAST PACE

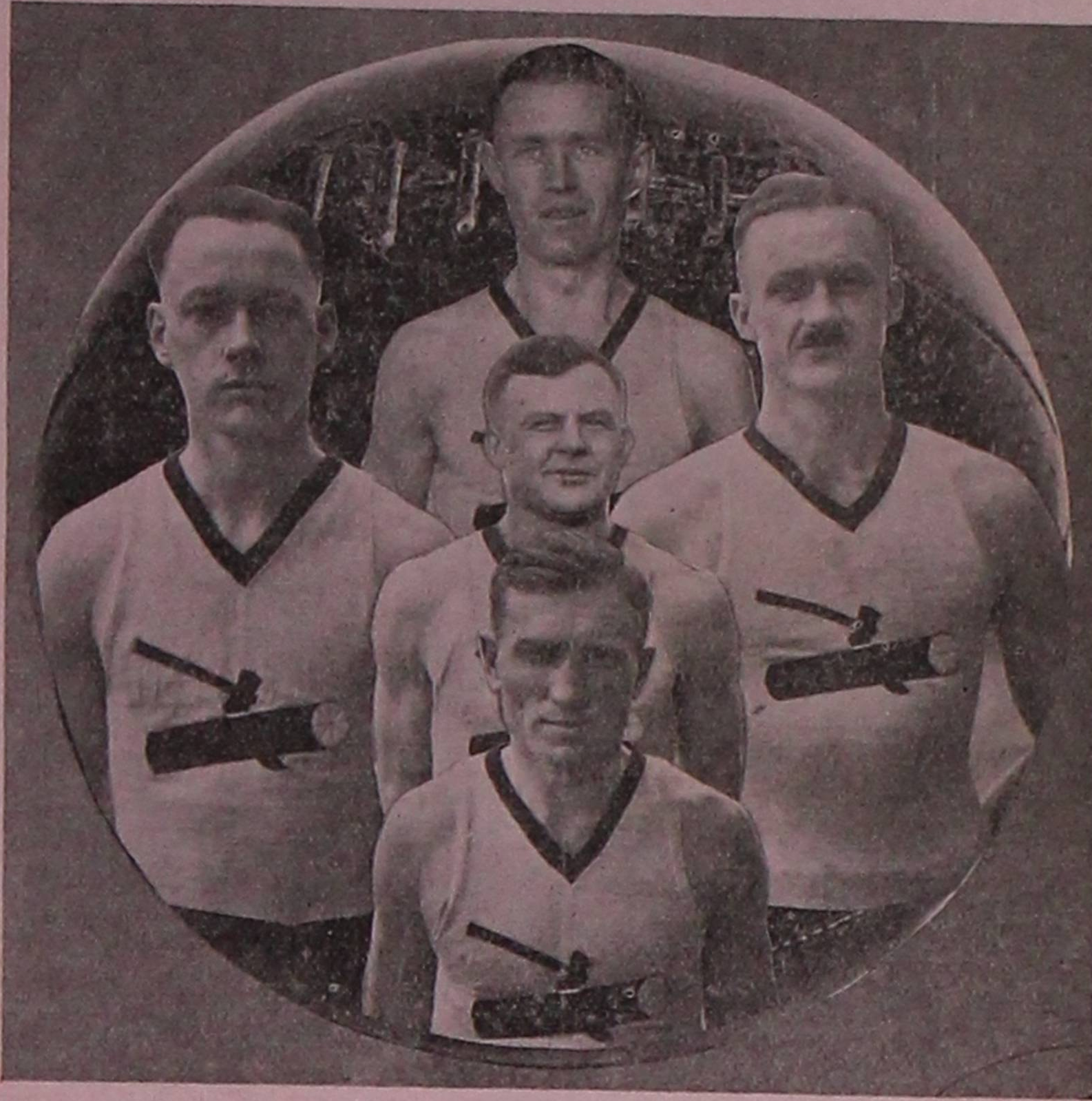
Strenuous Schedule Was Played; Two Trips Were Made; But 3 Games Lost

The basketball season just closed was the most successful in the history of the college. Nineteen games were played and sixteen of them were victories for the Loggers. In preliminary games the Majestics of the Tacoma City League suffered two setbacks at the hands of the axemen. The strong Chehalis Athletic Club and Winlock Athletic Club suffered a like fate during a road trip at the Christmas holidays. This was the first definite indication that the Puget Sound men were anything more than an ordinary basketball team. In both these games the team came from behind to win.

Linfield College, Oregon State Normal, Camp Lewis Allstars and Spokane College likewise felt the sharp edge of the Loggers' axe. The game with Spokane College, the last of the season was a thrilling contest from the fans' standpoint. The Loggers had just returned from a week's trip into Oregon and were more or less battered and tired from five hard games on the road. They seemed unable to hit their stride and allowed Spokane to lead through all the first half and up to the middle of the last. Some substitutions were made at this point and the regular men studied the game for a few minutes from the sidelines. During their observation they seemed to fathom the Spokane system and returned to the game to pull it out of the fire and register another win for their College and finish their season in a blaze of glory for themselves. This was perhaps the most spectacular bit of strategy exhibited on the home floor during the season.

Ten men were given awards for the season's play. Of these Enochs, Blevins, Van Devanter, and Guest were veterans. Those playing their first season were Ginn, Aldrich, McDougall, Smith, Schwarz and Samuelson. Mac was kept in hot water during the entire season trying to decide which of these men were the first team and which constituted the second string. The result was that, except for Enochs, there was little discrimination between the men. Enochs and Van Devanter will be lost through gradu-

Squad That Came Through Past Schedule With Only Three Reversals



Here we have the varsity basketball team that lost but three games the past season. At the top is Harry Enochs, of Burton, for three years high point man and best center in Tacoma. He graduates this spring and McNeal will have a hard job finding a man that will fill the position like Harry has. On the right is Dale Ginn, of Portland, Oregon, a new man to college but

one of the most effective forwards this school has had. In the center Eddie Schwarz again. He kept them away from the Logger basket. To the right is "Horse" Blevins, who with Schwarz, made up the main defensive wall of the team. Below is Bill Smith, of Spokane, a fast forward and with Ginn, the two make an excellent pair.

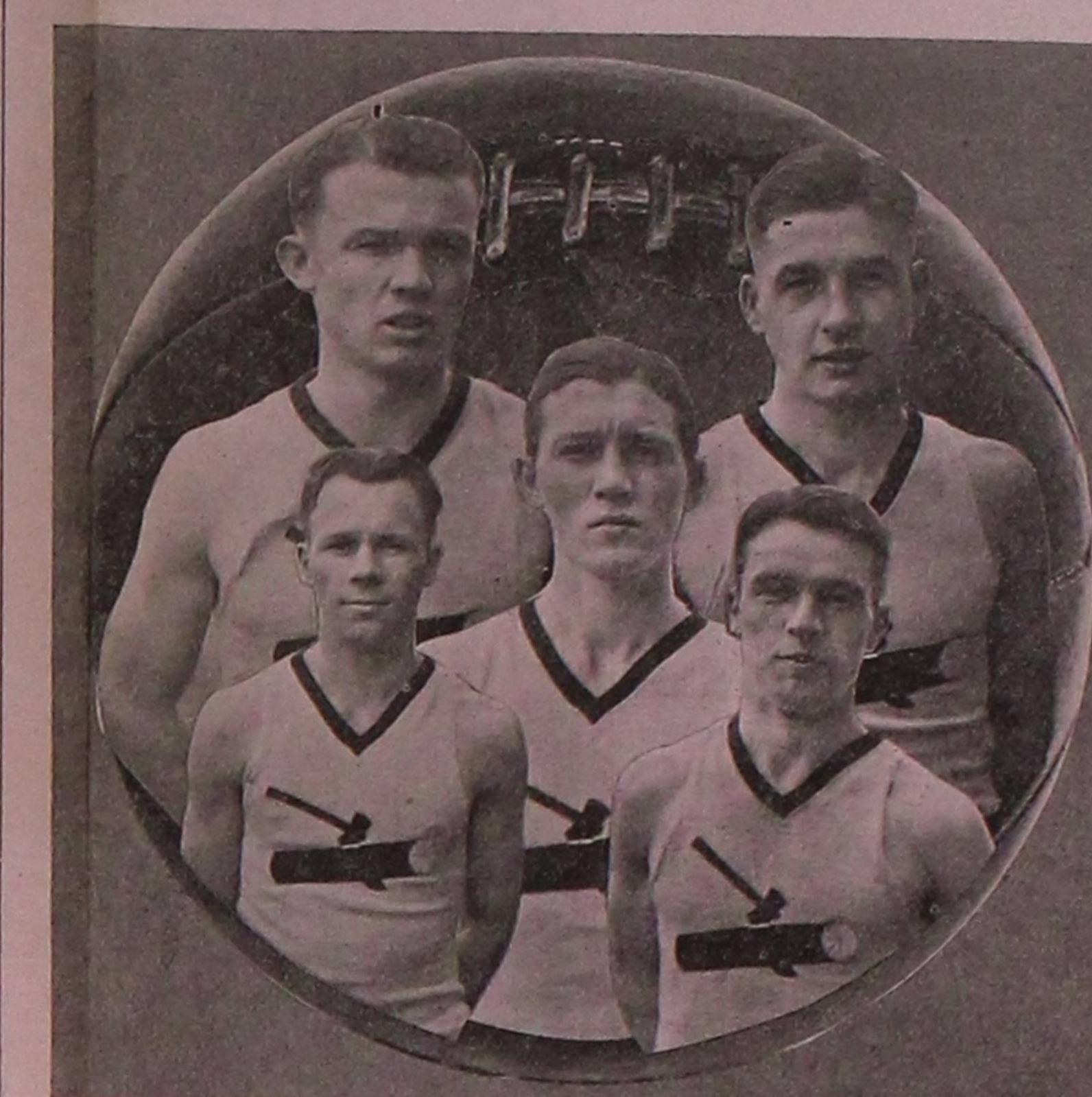
They are dependable men who will be hard to replace. However, if all the other men return to college next season, they will offer an excellent nucleus with which to start another winning team.

A stiff schedule is being arranged for next season. More college teams are being invited to our campus and interest in the cage sport is expected to continue the pace it has set during the past three seasons.

PHILOMATHEAN

In memory of the death of Dennis Schenk, the society was dismissed after holding a short business meeting Monday evening. The following officers were elected for the ensuing year: President, Paul Lung; vice president, Sam Pugh; secretary, Marion Gynn; treasurer, Bob Burrows.

Next week's program is on the "American Indian."



In this picture are the alternate basketball players. At the top on the left is Clare Guest. On top and to the right is Weston Aldrich. In the center Neil McDougall substitute center to Harry Enochs. Bottom left is Al Samuelson, and on the right is "Van" Van Devanter. Of this group all will return to school next year but Van Devanter, who graduates, and will go to teaching and coaching.

An important business meeting of Delta Alpha Gamma was held Wednesday afternoon in the sorority club room.

Bring an Athlete to College With You Next Fall

Coach R. W. McNeal Registers Optimism

Here is portrayed the main factor for the Logger's recent sport successes—success that has come to the College of Puget Sound for the last three years. With the advent of McNeal to this school three years ago the athletic program has outdistanced the hopes of the most anxious fan. The

Bring an Athlete to College With You Next Fall

Bring an Athlete to College With You Next Fall

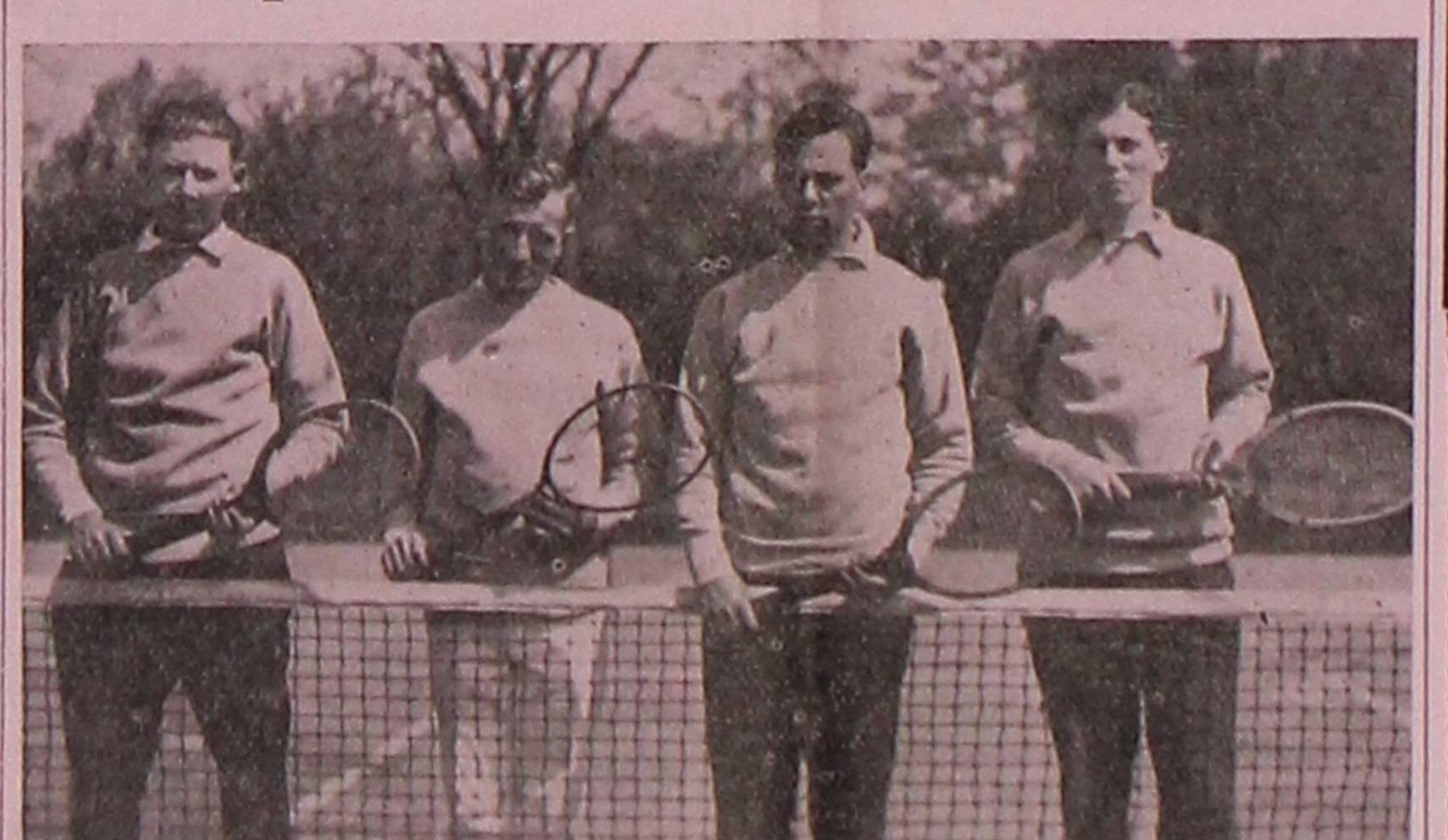
Bring an Athlete to College With You Next Fall



distance has been covered in so short a space of time that, once in oblivion, the Logger sport teams are now classed with the best in the Pacific Northwest; and some have styled the school "the Centre College of the West." And all of this since McNeal has been in charge. More power to "Mac."

With the advent of McNeal to this school three years ago the athletic program has outdistanced the hopes of the most anxious fan. The

Racquet Team That Goes to Oregon



Although the season for the net game is hardly under way as yet the above four players with the exception of Neil McDougall on the extreme right will make up the Logger tennis team this spring. Neil would have made the team and did when the picture was taken but he has since been declared ineligible through the dean's office and will not be able to participate on the team. Next to him is Bill Smith who made a name for himself while representing the Spokane College a year ago; and next is Morton John-

son, first man from last year's team.

Tennis courts are now under construction on the new college campus and it is hoped they will be ready for the players before the season has run its course. Tournaments have been scheduled with St. Martin's College, Pacific Lutheran College, and a trip to Oregon with the baseball team is just about definitely arranged for.

Wallace Scott, intercollegiate tennis champion of the United States played his first college tennis while a student here.

Costumes Wigs
For Rent or Sale
Neal E. Thorsen
618-619 Pantages Bldg.
Main 3111

The Latest in Men's Wear
BUD WEISER'S
HABERDASHERY
924 Pac. Ave. Tacoma, Wash.

The Store for
Men and Boys
Bell's
GOOD GOODS
W. C. Bell & Sons Co.
1110-12 Pacific Ave.

SWEATERS
Caps and
ATHLETIC
GOODS
at
KIMBALL'S
1107 Broadway

MOHR HAS IT
D & M
BASEBALL SUPPLIES
Our spring stock is complete and ready for your inspection
Henry Mohr Hdw. Co.
1141 Broadway

BEAUTY—FRAGRANCE—QUALITY
Fellows, the girls go wild, simply wild over them
Wonderful Flowers—Wonderful Service
CALIFORNIA FLORISTS
Main 7732 907 Pac. Ave.

WE HAVE A BLACK AND TAN CALF OXFORD—CRACKING GOOD SHOES AT \$5.85
AND A TAN CALF OXFORD WITH A "RA-JAH" CREPE SOLE AT \$6.50
DICKSON BROTHERS COMPANY
1120-1122 Pacific Ave.

GRADUATION AND WEDDING GIFTS
DIAMONDS, WATCHES AND JEWELRY
The World Famous "Gruen Guild" Veri-thin and Wrist Watches
International Sterling and Sheffield Silverware
Quality Goods — Honest Values — Popular Prices
FRANK C. HART & SONS
912 Broadway
"Your Credit Good as Gold"

BASEBALL - FOOTBALL
and
TRACK EQUIPMENT
The Finest Quality
The Most Reasonable Price
at the
Washington Hardware Co.
SPALDING AGENTS
Tenth and Pacific Avenue

SIXTH AVENUE DISTRICT

EAT AT HOYT'S LUNCH ALWAYS OPEN
HOT AND COLD LUNCH AT ALL HOURS
2412—6th Avenue MAIN 70
J. P. LESHER, Prop.

We Develop Films Free
\$1 DOWN BUY \$1 A WEEK
KODAK
SUN DRUG CO.
Free delivery
Cor. 6th at Anderson M. 648

Pollyanna Cafe
Try Our Special Sunday
FRIED CHICKEN
DINNER
75 Cents
Breakfast Lunches Dinner
Home Made Pies and Cakes
Candies, Fountain Service
Open 7:30 A. M. to Midnight
2607 6th Ave. Main 3370

TATMAN MUSIC HOUSE
Headquarters for Radios
and
Musical Instruments
2605 6th Ave M. 2789

6TH AVE. BARBER SHOP
A-1 Haircuts
DICK JONES in
"Success Wid de Feet"
We Shine Anything
2409 6th Ave. Tacoma

Women's Phoenix Silk
Hose
in many shades
\$1.00, \$1.50 and \$1.85 pair
A. Grumblin & Co.
2505 6th Ave. M. 497

West Side Grocery Co., Inc.
G. M. Harvey, Prop.
Phone Main 702
6th and Pine
Service, Quality, Prices Right

STUDENTS!
We have now secured the Agency for the famous Hole-proof Hose for Men with the new ExToe which will give from 3 to 4 times more wear than any other socks.
Lisle at 40c; 2 pr. 75c.
Silk and Lisle 50c pr.
Pure Silk at 75c & \$1.00 pr.
Fred Jensen
Men and Boys Shop
2513 6th Ave. Main 2995

The Store of Personal Service
FREDERICK DEAN DRUG COMPANY
Prescription Specialists
2612-6th Ave. Phone M. 2726

For Quality and Service
Try the
Bell Grocery
2606 6th Ave. Main 444

Sixth Ave. Variety Store
2515 Sixth Ave.
Notions, Art Goods, Threads,
Stationery, Crockery, Party Favors

The Puget Sound Trail

Official Publication of the Associated Students of the College of Puget Sound. Published weekly during the school year.
Entered as second class matter at the Post Office at Tacoma, Washington, under the Act of Congress, March 3, 1879.
Subscription price, 50c per semester, by mail.

EDITORIAL STAFF (SPORT EDITION)

Editor Preston Wright
Associate Editor Coach R. W. McNeal
Assistant Editor Dale Ginn
Editorial Writer Richard Yost
Dramatic Editor Harry Thorsen
Society Editor Barbara Shanks
Columnist Michael Thorniley

BUSINESS STAFF (SPORT EDITION)

Business Manager Eldon Chulnard
Advertising Manager Ensley Llewellyn
Circulation Manager Hale Niman
Exchange Manager Arthur Harris

VALUE OF ATHLETICS TO THE

CHRISTIAN COLLEGE STUDENT

The value of athletics for the purpose of advertising and building up a college or university is well attested. But making it a more specific and individual matter, of what value is athletics to the students of a Christian College—especially to the Christian Life-service students?

Let us for a moment borrow the four-fold program slogan of the Y. M. C. A.—Mental, Spiritual, Social and Physical training—in its application to the college student. The prime motive for attending college is the attainment of mental cultivation. Closely associated with this is the endeavor of the denominational institution to imbue this mental culture with a spiritual emphasis. A third ally of these two is the ability to meet others on a social plane—to make oneself agreeable, informing, and companionable—by mingling daily with one's fellow-students, or by a judicious participation in social activities.

These three—the first, for the purpose of intellectual guidance and progress; the second, for the purpose of the dissemination of divine truth; the third, for the purpose of engineering a spirit of sympathetic understanding—are fundamentals in the training of the young man who contemplates entering into some phase of the Christian Life—service work.

But the fourth constituent of the program mentioned above—Physical training—merits a ranking on a par with these three. This type of training may be acquired in college also, either in the form of gymnastic work or major and minor sports. On the present basis of our college athletic program it is not to be expected that every individual who turns out will win a berth on the respective teams. The honor of making the first team is no criteria of the value of this training. It is not at all improbable that the young man who does not succeed in making the team possesses the better working knowledge of the game which he may profitably use in his life work. The training and technique thus acquired will prove to be of immeasurable worth to the social worker or minister throughout his years of service. Suffice it but to mention a few of these, e.g., the ability to organize the youth of a community in recreational programs; to win the youth to the cause of service by appealing to them through their recreational interests; to deal more leniently with the misguided boy. At the same time he is enabled to make a study of human nature in action—to judge character as revealed through play. A person may apparently succeed in shielding any flaws in his character until he enters some competitive sport—then he is seen at his true worth. This capacity of judging a person by the way he plays is an asset to the social worker. Also of incalculable value to himself is the building up of a sound, robust physique wherein is stored vast energy requisite to his years of strenuous service.

There remains the argument on the part of some fellows that time does not permit them to get this type of training. Although some of them are unable to devote the greater part of the afternoon to the major sports they have no excuse of not availing themselves of other forms of activity. The tennis courts provide means of activity as do the gymnasiums of the college and the local Y. M. C. A.

To sum up the foregoing briefly: the young man who accedes the ideal of Christian service must necessarily be a four-square man—a leader mentally, spiritually, socially, and physically equipt to guide the life of his community. This four-fold program is the heritage of the Christian College student.

—Duck Yost.

Boxed Score of Big Game

IDAHO		AB	R	H	PO	A	E
Kleffner, 2b	5	0	0	3	5	0	0
Lehrba, ss	5	0	1	1	3	0	0
Wicks, rf	5	0	0	1	1	0	0
Lawson, 3b	5	1	1	2	2	0	0
Cameron, cf	5	1	1	1	0	1	0
Hamerton, c	4	0	0	8	0	0	0
Lansdon, 1b	4	0	0	14	0	0	0
Vesser, lf	4	0	1	1	0	0	0
Golden, p	4	0	0	1	2	1	0
xFields	1	0	0	0	0	0	0
Green, p	0	0	0	0	0	0	0
Totals	42	2	4	32	13	2	0
PUGET SOUND		AB	R	H	PO	A	E
Carli, ss	5	0	2	1	1	0	0
Aldrich, c	5	1	1	9	1	1	0
Peterson, 2b	5	0	1	2	4	1	0
Schwarz, 1b	5	0	2	14	1	2	0
Enochs, cf	5	1	0	0	0	0	0
Falconer, rf	3	0	0	1	0	0	0
Blevins, p	3	0	0	2	3	0	0
Ginn, 3b	3	0	0	2	2	1	0
Schuler, lf	4	0	1	2	0	0	0
Samuelson, lf	1	0	0	0	0	0	0
Leak, p	1	1	1	0	0	0	0
Beckman, c	1	0	1	0	0	0	0
Totals	41	3	9	33	12	5	0
SCORE BY INNINGS							
Idaho	0	0	0	0	0	0	2-0-2
Puget Sound	0	0	0	0	0	0	2-1-3
SUMMARY							

Sacrifice hits—Blevins, Schwarz, Enochs, Lawson, Kleffner. Two-base hits—Schwarz, Lehrba. Four hits 2 runs off Blevins in 10 innings; 4 hits 2 runs off Golden in 9 innings; 4 hits 1 run off Green in 2 innings. Struck out—By Blevins 9, by Golden 7. Bases on balls—Off Leak 1. Hit by pitcher—Enochs by Golden; Cameron by Blevins. Time—2:30. Umpire—Deal.

Bring an Athlete to College With You Next Fall

Third Year for This College Organization



Here are most of the members of the Lettermen's Club now in school. The organization is now completing its third year, having been organized three years ago. Every man who has legally earned a varsity "P" in any of the college sports automatically becomes a member of the club. Those shown here are:

Front row reading from left to right: Clare Guest, basketball and baseball; Eddie Schwarz, football;

Ed Amende, football and basketball; Harry Enoch, basketball and baseball, also president of the Lettermen's Club; Aaron Van de Vanter, Second row from bottom: Tatem, football; Richard Jones, football; Harry Parker, football and baseball; Al Samuelson, basketball; Weston Aldrich, basketball and baseball; Pete Carl, football, baseball and wrestling;

Pete Peterson, baseball. Third row: Dale Ginn, basketball and baseball; Maynard Falconer, baseball and tennis; Alden Thomson, football; Roy Browning, football; Gard Schuler, football and baseball; Mike Thorniley, football and baseball. Top row: Merrill Ginn, tennis; Johnny Goore, tennis; Lee Lenk, baseball; Morton Johnson, tennis; and Coach McNeal.

"Capt. Applejack" to Arrive May 21-22

Associated Students Have Started Ticket Campaign to Fill Jones Hall for Play

Have you ever longed for adventure that is electrically thrilling? Have you ever longed for romance that is palpitatingly entralling? Have you ever yearned to be the handsome, dashing hero rescuing the beautiful princess from the horny hands of an intriguing villain? Well, Ambrose Applejack, bored with the placid routine of his country life, did, and before he could turn around, what ho—he was engulfed in enough adventures to satisfy three ordinary heroes.

Wendell Brown, in the great role of Applejack, and his supporting cast are intensively rehearsing these thrilling adventures every afternoon under the direction of Prof. Lynette Hovious, and in the words of M. Emil Coue, "Day by day, in every way, Captain Applejack is getting better and better."

If one should linger awhile close to the scene of rehearsal, many sounds foreign to the general life of C. P. S. would be heard. Now and then one would hear the booming voice of a swashbuckling pirate issuing commands to his scurvy crew. Again, one would hear the frightened tones of a damsel apparently in danger. Sometimes the atmosphere is charged with death-like intensity, padded feet and rustling cloth. At other times there issues forth blood-curdling cries, the dastardly laugh of a villain or the whining cry of a slave.

"Super-melodrama," you exclaim. Yes, true, but the ingenuity of its great author, Walter J. Hackett, has made it of such a farcical character that it kept New York audiences in uproarious laughter for two successful seasons. It is indeed the greatest comedy of its kind since "Peter Pan" and has been described by prominent play-goers as 'rollicking, rousing, romantic.'

Fellow students, this famous comedy, dramatized by a splendid cast of student players, is one well worth seeing and one well worth supporting. The tickets have been placed on sale and under the leadership of Roy Owens with Evalyn Miller, Winifred Longstreth, Amy Dahlgren, Herold Wade and Morton Johnson assisting, the ticket selling campaign has started in earnest. The play is to be produced on the evenings of May 21st and 22nd, but owing to another entertainment on the 22nd, all students are urged to make reservations for that date in order that outsiders may have full access to the house on the 21st. Students may procure tickets at a 50c reduction if Student Body cards are presented to Mike Thorniley or assistants at the Trail office.

The credit for winning the Idaho game does not belong to the team alone. To Coach McNeal, "the man behind the guns" should go the greatest credit. It was McNeal, the strategist, who won the game. His broad knowledge of baseball and of men enabled him to outgeneral the Idaho team in the thrilling last two innings and register a win over the larger school.

DEATH OF DENNIS SCHENK IS BLOW TO COLLEGE

Dennis Schenk died Friday, May 1, at his home in this city. Mr. Schenk was a former student here, and while in college was prominent in many branches of activity. He was a member of the Sigma Zeta Epsilon fraternity, sang in the glee club, and was a varsity debater. He was very popular and all who knew him enjoyed his sincere friendship. The loss of Dennis Schenk was a blow to the College that will long be felt. He was secretary of the Puget Transportation Company at the time of his death. The funeral services were held last Monday from the Buckley-King undertaking parlors.

CAMPAIGN COMES TO CLOSE WITH OVER \$125,000

The students at chapel Monday were thrilled by an announcement that the long sought for goal of \$125,000 for an endowment fund was reached last Friday.

The goal was almost reached Friday afternoon when all but ninety-nine cents had been raised. Several of the secretaries had a quarrel as to who would give this last amount.

The college is surely deeply indebted to Dr. Todd and the field secretaries and all others who are responsible for the successful campaign. Much credit is due to the generous citizens of Tacoma who gave freely to the fund.

The endowment fund means a sufficient amount for the running expenses of the school.

Girls of Y. W. C. A. Hold Seabeck Rally for Summer Session

Tuesday's Meeting Is Featured by Ukelele Quartette and Talks by Active Members

Tuesday morning in Y. W. C. A. a Seabeck Rally was held. Winifred Longstreth who was chairman of the meeting, gave a very interesting opening speech. Following this speech, the Ukelele Quartette played while the girls sang Seabeck songs. Maude Hague told about "Fun at Seabeck." Erma Coffman told about "Serious Hours." All of the girls present at this meeting enjoyed these short talks very much. Dorothy Wallace told about the different girls who were at Seabeck. This topic was called "In Touch with All the World," and Evalyn Miller spoke on "Those Spots of Inspiration." The closing number of this interesting meeting was given by the Ukelele Girls. Everyone joined in singing Seabeck melodies. All the girls were urged to attend the Seabeck conference to be held from June 23 to July 3.

Bring an Athlete to College With You Next Fall

The Kappa Sigma Theta Sorority of the College of Puget Sound entertained with an afternoon tea Wednesday in recognition of Mothers' Day. The North L St. home of Miss Ann Crapser was gay with lavender lilac and narcissus for the occasion, and a short program was enjoyed by the guests during the tea hours. Mrs. Crapser and Mrs. E. H. Todd presided at the tea table.

Those entertained were Mrs. O. N. Jones, Mrs. E. R. Stewart, Mrs. Edw. F. Schmid, Mrs. O. Carlson, Mrs. R. E. Thayer, Mrs. F. W. Somers, Miss Georges Reneau, Mrs. J. R. Miller, Mrs. J. C. Bell, Mrs. Ed Forsberg, Mrs. W. M. Mackey, Mrs. L. L. Van den Steen, Mrs. E. H. Todd, Mrs. J. O. Purkey, Mrs. Ada H. Monroe, Mrs. Thos. O'Connor, Mrs. H. O. Scofield, Mrs. C. D. Rerey, Mrs. G. A. Misener, Mrs. O. P. Scheibler, Mrs. O. E. Dahlgren, Mrs. F. M. Jones, Mrs. A. Kruzner, Mrs. A. M. Lunde and Mrs. J. C. Bronson.

Bring an Athlete to College With You Next Fall

Sunday night a delicious waffle feed was enjoyed at the dormitory. Mrs. Goulder, the new house-mother, was chief cook and she was kept busy a good part of the evening filling the orders.

Hayden-Watson FLORISTS

911 Pacific Avenue
Phone Main 300

College Students will enjoy the merchandise we are offering in Hats, Caps and Furnishings.
CHAS. F. LEWIS & CO.
Next to Rust Bldg.
948 Pac. Ave.

Sweater Coats

Dozens of new patterns now showing in Novelty Coats and Slip-Ons.

Davis Men's Shop
944 Pac. Ave.



Buckley-King Company

Funeral Directors
730-32 St. Helens Ave.
Main 412 Tacoma

Dance to Latest

19616
Yearning (Fox Trot)
Roger Wolfe Kohn Orch.
Hot-Hot-Hottentot (Fox Trot)
Roger Wolfe Kohn Orch.

2842
Florid (Fox Trot)
Bennie Krueger's Orch.
Lady of My Cigarette (Fox Trot)
Bennie Krueger's Orch.

19618
When We Are Together (Fox Trot)
Art Hickman Orch.
I Want Your Love (Waltz)
Art Hickman Orch.

Hopper-Kelly
Temple of Music
945 Broadway
PIANOS

ALL STANDARD REBUILT TYPEWRITERS
\$500 DOWN puts one IN YOUR HOME
Same Guarantee as on new Machines.
M. R. MARTIN & CO. 926 PACIFIC AVE.

Rhodes Brothers

Broadway - Eleventh - Market



A Double-Breaster Without a Double in Smart Style

The Hit of Eastern Colleges
This spring you haven't a single excuse for not possessing a Double-Breasted Suit. It's the world-wide vogue. Here's our "Doncourt"; 3 buttons (2 to button); forming; semi-soft front; flap pockets; ventless; quarter lined; 30 inches long. Hand-tailored? You can bet your bottom dollar, and it doesn't take many of them to own the handsome, hand-tailored "Doncourt" by Stein-Bloch.